



70-740^{Q&As}

Installation, Storage, and Compute with Windows Server 2016

Pass Microsoft 70-740 Exam with 100% Guarantee

Free Download Real Questions & Answers **PDF** and **VCE** file from:

<https://www.passapply.com/70-740.html>

100% Passing Guarantee
100% Money Back Assurance

Following Questions and Answers are all new published by Microsoft
Official Exam Center

-  **Instant Download** After Purchase
-  **100% Money Back** Guarantee
-  **365 Days** Free Update
-  **800,000+** Satisfied Customers





QUESTION 1

You have a Hyper-V host that runs Windows Server 2016.

You need to identify the amount of processor resources consumed by Hyper-V and virtual machines.

Which counter should you use from Performance Monitor?

- A. \Hyper-V Hypervisor\Logical Processor
- B. \Hyper-V Hypervisor Root Virtual Processor(_Total)\% Guest Run Time
- C. \Hyper-V Hypervisor Virtual Processor(_Total)\% Hypervisor Run Time
- D. \Hyper-V Hypervisor Virtual Processor(_Total)\% Total Run Time
- E. \Hyper-V Hypervisor Logical Processor(_Total)\% Total Run Time

Correct Answer: E

References: [https://msdn.microsoft.com/en-us/library/cc768535\(v=bts.10\).aspx](https://msdn.microsoft.com/en-us/library/cc768535(v=bts.10).aspx)

QUESTION 2

You have Nano Server image named Disk1.vhdx.

You mount Disk1.vhdx.

You need to add a folder that contains several files to the image.

Which tool or cmdlet you should use?

- A. File Explore.
- B. Add-Windows Image
- C. Nano Server Image Builder
- D. Server Manager

Correct Answer: A

QUESTION 3

Note: This question is part of a series of questions that present the same scenario. Each question in the series contains a unique solution that might meet the stated goals. Some question sets might have more than one correct solution, while others might not have a correct solution.

After you answer a question in this section, you will NOT be able to return to it. As a result, these questions will not



appear in the review screen.

You have two servers that run Windows Server 2016.

You plan to create a Network Load Balancing (NLB) cluster that will contain both servers.

You need to configure the network cards on the servers for the planned NLB configuration.

Solution: You configure the network cards to be on the same subnet and to have static IP addresses. You configure the cluster to use unicast.

Does this meet the goal?

A. Yes

B. No

Correct Answer: A

Following are the hardware requirements to run an NLB cluster.

All hosts in the cluster must reside on the same subnet.

There is no restriction on the number of network adapters on each host, and different hosts can have a different number of adapters.

Within each cluster, all network adapters must be either multicast or unicast. NLB does not support a mixed environment of multicast and unicast within a single cluster.

If you use the unicast mode, the network adapter that is used to handle client-to-cluster traffic must support changing its media access control (MAC) address.

Following are the software requirements to run an NLB cluster.

Only TCP/IP can be used on the adapter for which NLB is enabled on each host. Do not add any other protocols (for example, IPX) to this adapter.

The IP addresses of the servers in the cluster must be static.

References:

<https://technet.microsoft.com/en-us/windows-server-docs/networking/technologies/network-load-balancing>

QUESTION 4

You have a DNS server named Server1.

The forwarders are configured as shown in the Forwarders exhibit. (Click the Exhibit button.)



SERVER1 Properties

Debug Logging | Event Logging | Monitoring | Security
Interfaces | Forwarders | Advanced | Root Hints

Forwarders are not available because this server does not use recursion.

IP Address	Server FQDN
168.63.129.16	<Unable to resolve>

Use root hints if no forwarders are available Edit...

Note: If conditional forwarders are defined for a given domain, they will be used instead of server-level forwarders. To create or view conditional forwarders, navigate to the Conditional Forwarders node in the scope tree.

OK Cancel Apply Help

The Advanced Settings are configured as shown in the Advanced exhibit. (Click the Exhibit button.)

SERVER1 Properties

Debug Logging | Event Logging | Monitoring | Security
Interfaces | Forwarders | Advanced | Root Hints

Server version number:
10.0 14300 (6x37dc)

Server options:

- Disable recursion (also disables forwarders)
- Enable BIND secondaries
- Fail on load if bad zone data
- Enable round robin
- Enable netmask ordering
- Secure cache against pollution

Name checking: Multibyte (UTF8) v

Load zone data on startup: From Active Directory and registry v

Enable automatic scavenging of stale records

Scavenging period: 0 days v

Reset to Default

OK Cancel Apply Help



The Advanced Settings are configured as shown in the Advanced exhibit. (Click the Exhibit button.)

The Root Hints are configured as shown in the Root Hints exhibit. (Click the Exhibit button.)

SERVER1 Properties

Debug Logging Event Logging Monitoring Security
Interfaces Forwarders Advanced **Root Hints**

Root hints resolve queries for zones that do not exist on the local DNS server. They are only used if forwarders are not configured or fail to respond.

Name servers:

Server Fully Qualified Domain Name (FQDN)	IP Address
a.root-servers.net.	[2001:503:ba3e::2...
b.root-servers.net.	[2001:500:84:b]
f.root-servers.net.	[2001:500:2:f]
i.root-servers.net.	[2001:7e::53]
l.root-servers.net.	[2001:500:9f::42]
m.root-servers.net.	[2001:dc3::35]

Add Edit... Remove Copy from Server

OK Cancel Apply Help

Server1 does not contain any DNS zones.

For each of the following statements, select Yes if the statement is true. Otherwise, select No.

Hot Area:



Answer Area

Statements	Yes	No
Server1 can resolve the names of hosts that are located on the Internet.	<input type="checkbox"/>	<input type="checkbox"/>
From Server1 Properties, if you perform a test from the Monitoring tab, the recursive test will pass.	<input type="checkbox"/>	<input type="checkbox"/>
Server1 is configured as a root DNS server.	<input type="checkbox"/>	<input type="checkbox"/>

Correct Answer:

Answer Area

Statements	Yes	No
Server1 can resolve the names of hosts that are located on the Internet.	<input type="checkbox"/>	<input checked="" type="checkbox"/>
From Server1 Properties, if you perform a test from the Monitoring tab, the recursive test will pass.	<input type="checkbox"/>	<input checked="" type="checkbox"/>
Server1 is configured as a root DNS server.	<input type="checkbox"/>	<input checked="" type="checkbox"/>

QUESTION 5

You have a server named Server1 that runs Windows Server 2016.

You need to deploy the first node cluster of a Network Controller cluster.

Which four cmdlets should you run in sequence? To answer, move the appropriate cmdlets from the list of cmdlets to the answer area and arrange them in the correct order.

Select and Place:



Actions	Answer Area
Install-WindowsFeature	1. <input type="text"/>
New-NetworkControllerNodeObject	2. <input type="text"/>
Enable-NetworkControllerNode	3. <input type="text"/>
Install-NetworkController	4. <input type="text"/>
Install-NetworkControllerCluster	

Correct Answer:

Actions	Answer Area
<input type="text"/>	<input type="text"/>
<input type="text"/>	<input type="text"/>
Enable-NetworkControllerNode	<input type="text"/>
<input type="text"/>	<input type="text"/>
<input type="text"/>	<input type="text"/>

Correct Answer Sequence:

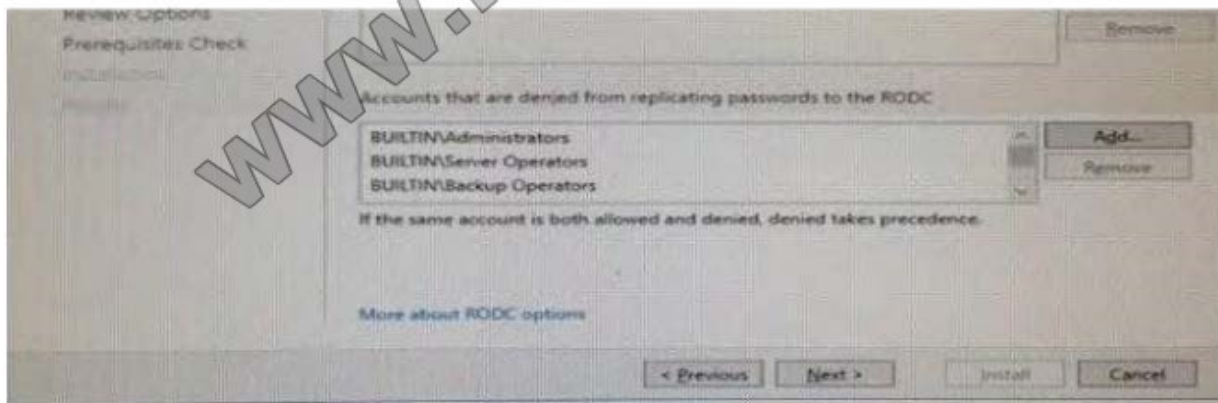
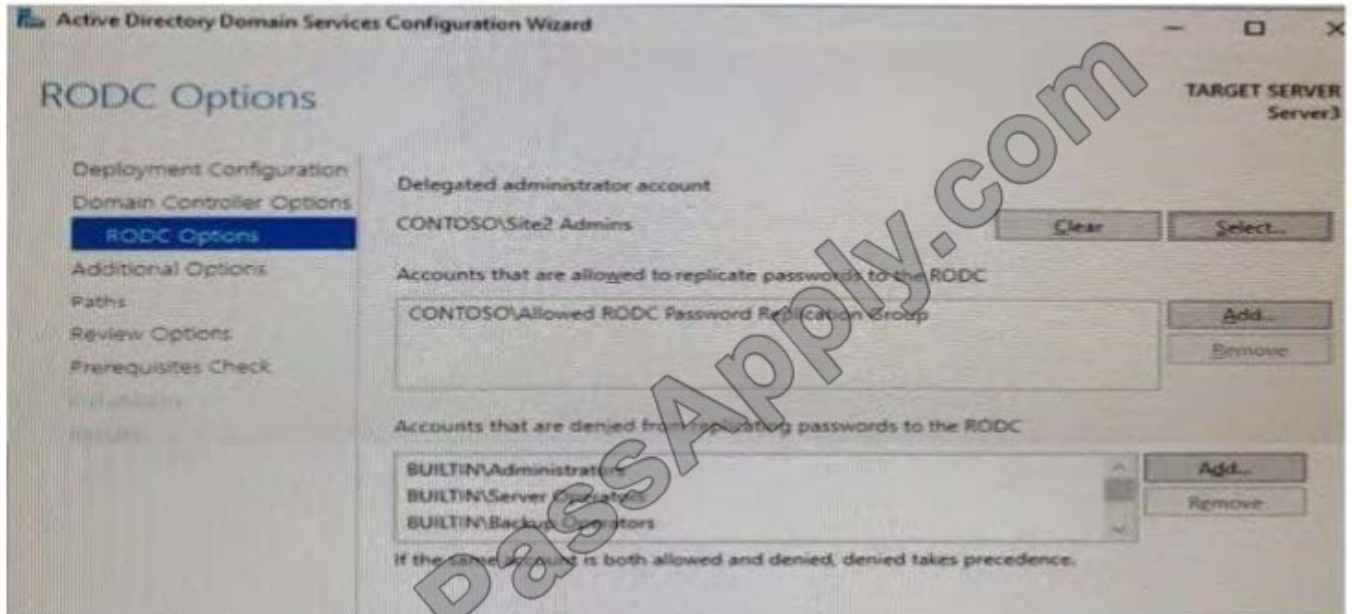
- Install-WindowsFeature
- New-NetworkControllerNodeObject
- Install-NetworkControllerCluster
- Install-NetworkController

Your network contains an Active Directory forest. The forest contains two sites named Site1 and Site2. Site1 contains 10 domain controllers. Site1 and Site2 connect to each other by using a WAN link. You run the Active Directory Domain Services Configuration Wizard as shown in the following graphic.



QUESTION 34
HOTSPOT

Your network contains an Active Directory forest. The forest contains two sites named Site1 and Site2. Site1 contains 10 domain controllers. You run the Active Directory Domain Services Configuration Wizard as shown in the following graphic.



[Latest 70-740 Dumps](#)

[70-740 VCE Dumps](#)

[70-740 Study Guide](#)



To Read the [Whole Q&As](#), please purchase the [Complete Version](#) from [Our website](#).

Try our product !

100% Guaranteed Success
100% Money Back Guarantee
365 Days Free Update
Instant Download After Purchase
24x7 Customer Support
Average 99.9% Success Rate
More than 800,000 Satisfied Customers Worldwide
Multi-Platform capabilities - [Windows](#), [Mac](#), [Android](#), [iPhone](#), [iPod](#), [iPad](#), [Kindle](#)

We provide exam PDF and VCE of Cisco, Microsoft, IBM, CompTIA, Oracle and other IT Certifications. You can view Vendor list of All Certification Exams offered:

<https://www.passapply.com/allproducts>

Need Help

Please provide as much detail as possible so we can best assist you.
To update a previously submitted ticket:



 <p>One Year Free Update Free update is available within One Year after your purchase. After One Year, you will get 50% discounts for updating. And we are proud to boast a 24/7 efficient Customer Support system via Email.</p>	 <p>Money Back Guarantee To ensure that you are spending on quality products, we provide 100% money back guarantee for 30 days from the date of purchase.</p>	 <p>Security & Privacy We respect customer privacy. We use McAfee's security service to provide you with utmost security for your personal information & peace of mind.</p>
---	---	--

Any charges made through this site will appear as Global Simulators Limited.
All trademarks are the property of their respective owners.
Copyright © passapply, All Rights Reserved.