



70-740^{Q&As}

Installation, Storage, and Compute with Windows Server 2016

Pass Microsoft 70-740 Exam with 100% Guarantee

Free Download Real Questions & Answers **PDF** and **VCE** file from:

<https://www.passapply.com/70-740.html>

100% Passing Guarantee
100% Money Back Assurance

Following Questions and Answers are all new published by Microsoft
Official Exam Center

-  **Instant Download** After Purchase
-  **100% Money Back** Guarantee
-  **365 Days** Free Update
-  **800,000+** Satisfied Customers





QUESTION 1

Note This question is part of a series of questions that use the same scenario. For your convenience, the scenario is repeated in each question. Each question presents a different goal and answer choices, but the text of the scenario is exactly the same in each question in this series.

Start of Repeated Scenario:

A company named Contoso, Ltd. has several servers that run Windows Server 2016 Contoso has a Hyper V environment that uses failover clustering and Windows Server Update Services (WSUS). The environment contains several Windows

containers and several virtual machines.

The WSUS deployment contains one upstream server that is located on the company's perimeter network and several downstream servers located on the internal network, A firewall separates the upstream server from the downstream servers.

You plan to deploy a human resources application to a new server named HRServer5. HRServer5 contains a FAT32-formatted data volume.

The CIO of Contoso identifies the following requirements for the company's IT department:

Deploy failover cluster to two new virtual machines.

Store all application databases by using Encrypted File System (EFS).

Ensure that each Windows container has a dedicated IP address assigned by a DHCP server ?Produce a report that lists the processor time used by all of the processes on a server named Server 1 for five hour.

Encrypt all communication between the internal network and the perimeter network, including all WSUS communications.

Automatically load balance the virtual machines hosted in the Hyper-V cluster when processor utilization exceeds 70 percent.

End of Repeated Scenario.

You need to configure the storage solution for the planned failover cluster.

You create two new generation 2 virtual machines on two separate Hyper-V host named VM12.

Which three action should you perform in sequence next? To answer, move the appropriate actions from the list of actions to the answer area and arrange and arrange them in the correct order.

Select and Place:



Correct Answer:

Create a VHDX file and store the file in the Clustered Shared Volume(CSV)

To each virtual machine, add the VHDX file as a shared drive.

For each virtual machine. Create a new system disk that uses the VHDX format and the virtual machines on the Cluster Shared Volume(CSV)

Create a network share named share1

Create a Clustered Shared Volume(CSV)

For each virtual machine, create a new system disk that uses the VHDX format and store the disks in Share1.

Correct Answer:

To each virtual machine, add the VHDX file as a shared drive.

Create a network share named share1

For each virtual machine. Create a new system disk that uses the VHDX format and the virtual machines on the Cluster Shared Volume(CSV)

Create a VHDX file and store the file in the Clustered Shared Volume(CSV)

Create a Clustered Shared Volume(CSV)

For each virtual machine, create a new system disk that uses the VHDX format and store the disks in Share1.

QUESTION 2

You have two Hyper-V hosts named Server 1 and Scrvc2 that run Windows Server 2016. Server 1 and Servers conned to the son network.



| Switch name | Host | Type | VLAN ID |
|-------------|---------|----------|----------------|
| Switch1 | Server1 | External | 2 |
| Switch2 | Server2 | External | |
| Switch3 | Server2 | Internal | Not applicable |

You have nine virtual machines configured as shown in the following table.

| Virtual machine name | Connected to | VLAN ID |
|----------------------|--------------|----------------|
| VM1 | Switch1 | 2 |
| VM2 | Switch1 | Not applicable |
| VM3 | Switch1 | 4 |
| VM4 | Switch2 | 2 |
| VM5 | Switch2 | Not applicable |
| VM6 | Switch2 | 4 |
| VM7 | Switch3 | 2 |

Server 1 and Server2 have virtual switches configured as shown in the following table.

All of the Virtual machines are configured to have IP addresses from the same network segment, the firewall on each of the virtual machines is configured to allow network connectivity.

to which virtual machines can you connect from VM1 and VM2?

To answer, select the appropriate options in the answer area.

Hot Area:

Virtual machines to which you can connect from VM1:

- VM4 only
- VM4 and VM7
- VM2, VM4, and VM5
- None

Virtual machines to which you can connect from VM2:

- VM5 only
- VM1 and VM3
- VM5 and VM8
- VM5, VM7, VM8, and VM9
- None

Correct Answer:

Virtual machines to which you can connect from VM1:

- VM4 only
- VM4 and VM7
- VM2, VM4, and VM5
- None

Virtual machines to which you can connect from VM2:

- VM5 only
- VM1 and VM3
- VM5 and VM8
- VM5, VM7, VM8, and VM9
- None

VM2, VM4 and VM5 VM5 only

QUESTION 3

Note: This question is part of a series of questions that present the same scenario. Each question in the series contains a unique solution that might meet the stated goals. Some question sets might have more than one

correct solution, while others might not have a correct solution.



After you answer a question in this section, you will NOT be able to return to it. As a result, these questions will not appear in the review screen.

You have a server named Server1 that runs Windows Server 2016. Server1 has the Hyper-V server role and Docker installed.

You pull the Microsoft/iis Docker image to Server1.

You need to view the available space in the Microsoft/iis Docker image.

Solution: You run the command `docker run -isolation hyperv -d microsoft/iis`.

You open Disk Management on Server1.

Does this meet the goal?

A. Yes

B. No

Correct Answer: B

QUESTION 4

You need to modify the GPO prefix by IPAM. What should you do?

A. Run the `Set-IpamConfiguration` cmdlet

B. Click Provision the IPAM server in Server Manager

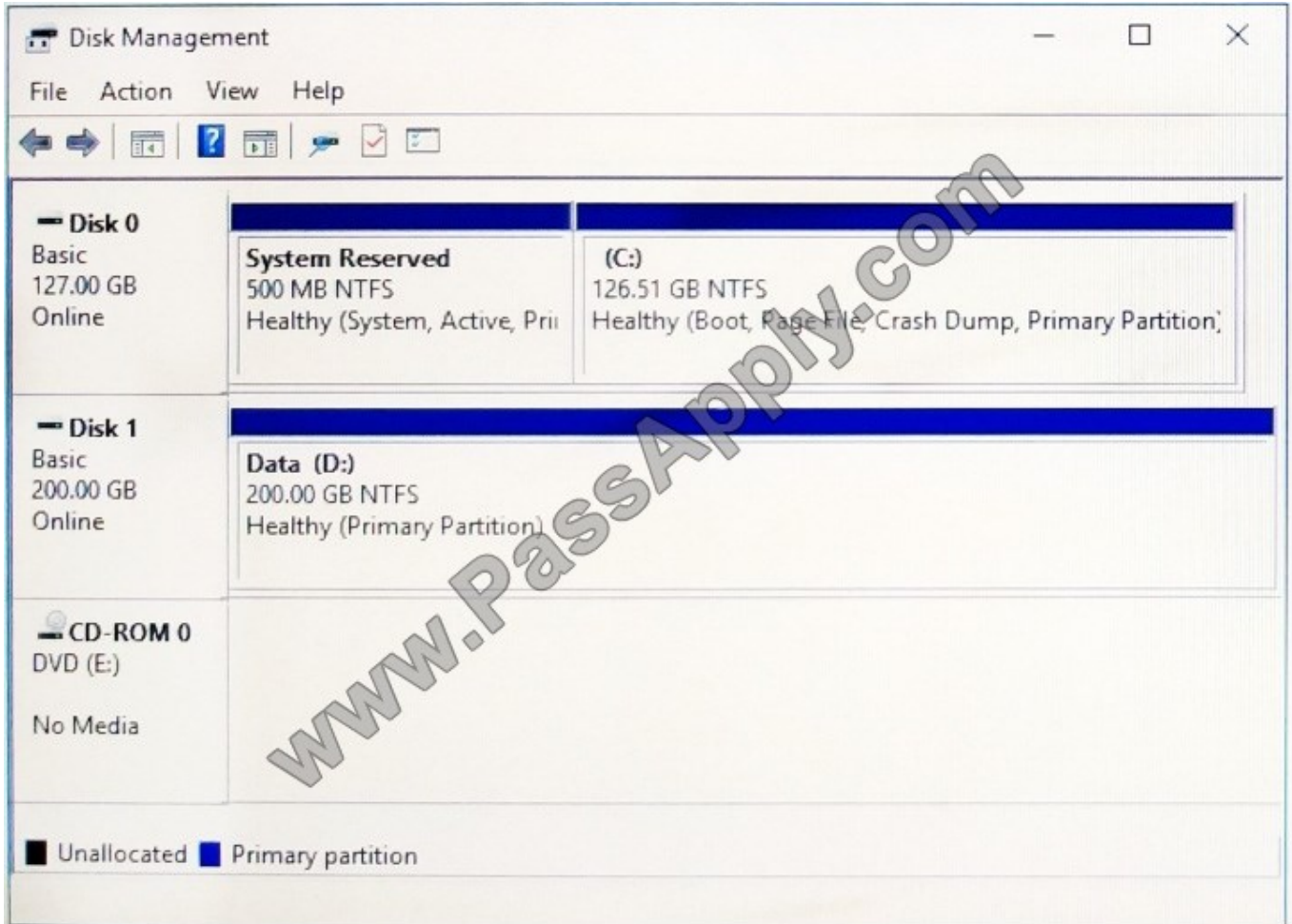
C. Click Configure server discovery in Server Manager

D. Run the `Invoke-IpamGpoProvisioning` cmdlet

Correct Answer: A

QUESTION 5

You have a Hyper-V host named Server1 that runs Windows Server 2016. Server1 hosts a virtual machine named VM1. VM1 runs Windows Server 2016. VM1 uses a VHD for storage. The disk configuration of VM1 is shown in the exhibit.



You need to increase the size of volume D to 400 GB.

Which cmdlets should you run on Server1 and VM1? To answer, drag the appropriate cmdlets to the correct servers. Each cmdlet may be used once, more than once, or not at all. You may need to drag the split bar between panes or scroll to

view content. NOTE: Each correct selection is worth one point.

Select and Place:



Cmdlets

- Resize-Partition
- Resize-VHD
- Resize-VirtualDisk
- Set-VHD
- Set-Volume

Answer Area

Cmdlet to run on Server1:

Cmdlet

Cmdlet to run on VM1:

Cmdlet

Correct Answer:

Cmdlets

-
-
- Resize-VirtualDisk
- Set-VHD
- Set-Volume

Answer Area

Cmdlet to run on Server1:

Resize-VHD

Cmdlet to run on VM1:

Resize-Partition



To Read the [Whole Q&As](#), please purchase the [Complete Version](#) from [Our website](#).

Try our product !

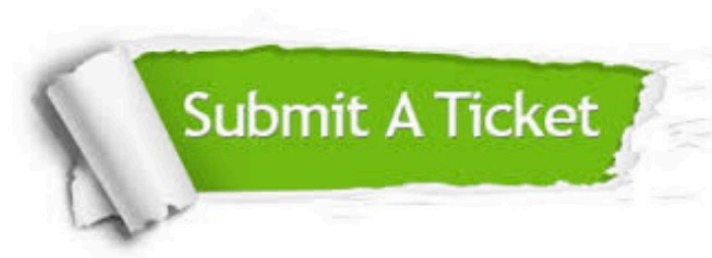
100% Guaranteed Success
100% Money Back Guarantee
365 Days Free Update
Instant Download After Purchase
24x7 Customer Support
Average 99.9% Success Rate
More than 800,000 Satisfied Customers Worldwide
Multi-Platform capabilities - [Windows](#), [Mac](#), [Android](#), [iPhone](#), [iPod](#), [iPad](#), [Kindle](#)

We provide exam PDF and VCE of Cisco, Microsoft, IBM, CompTIA, Oracle and other IT Certifications. You can view Vendor list of All Certification Exams offered:

<https://www.passapply.com/allproducts>

Need Help

Please provide as much detail as possible so we can best assist you.
To update a previously submitted ticket:



| | | |
|---|---|--|
|  <p>One Year Free Update Free update is available within One Year after your purchase. After One Year, you will get 50% discounts for updating. And we are proud to boast a 24/7 efficient Customer Support system via Email.</p> |  <p>Money Back Guarantee To ensure that you are spending on quality products, we provide 100% money back guarantee for 30 days from the date of purchase.</p> |  <p>Security & Privacy We respect customer privacy. We use McAfee's security service to provide you with utmost security for your personal information & peace of mind.</p> |
|---|---|--|

Any charges made through this site will appear as Global Simulators Limited.
All trademarks are the property of their respective owners.
Copyright © passapply, All Rights Reserved.