



70-687^{Q&As}

Configuring Windows 8.1

Pass Microsoft 70-687 Exam with 100% Guarantee

Free Download Real Questions & Answers **PDF** and **VCE** file from:

<https://www.passapply.com/70-687.html>

100% Passing Guarantee
100% Money Back Assurance

Following Questions and Answers are all new published by Microsoft
Official Exam Center

- ⚙ **Instant Download** After Purchase
- ⚙ **100% Money Back** Guarantee
- ⚙ **365 Days** Free Update
- ⚙ **800,000+** Satisfied Customers



**QUESTION 1**

You have a Windows 8.1 computer.

The drive on which your File History is stored is almost full.

You need to move the File History storage location to another drive.

Which three actions should you perform in sequence? (To answer, move the appropriate actions from the list of actions to the answer area and arrange them in the correct order.)

Select and Place:

Actions	Answer Area
Move the stored file history from the old location to the new location.	
Open File History from Windows Explorer.	
In the File History window, choose the option to change the File History folder.	
In the File History window, choose the option to change the File History drive.	
Browse to the new storage location.	
Open File History from Control Panel.	

Correct Answer:



Actions	Answer Area
	Move the stored file history from the old location to the new location.
Open File History from Windows Explorer.	In the File History window, choose the option to change the File History folder.
	Browse to the new storage location.
In the File History window, choose the option to change the File History drive.	
Open File History from Control Panel.	

QUESTION 2

You administer Windows 8 client computers in your company network.

A guest at your company is connected to the Internet as shown in the following exhibit. (Click the Exhibit button.)

View your basic network information and set up connections

View your active networks

Network

Public network

Access type: Internet

Connections: Ethernet

You need to ensure that the guest user is able to share network resources over Wi-Fi without lowering the overall security of the computer. What should you do?

- A. Change the network location type to Work.
- B. Configure File sharing connections settings for All networks.
- C. Change the network location type to Private.
- D. Configure File and printer sharing settings for Public networks.

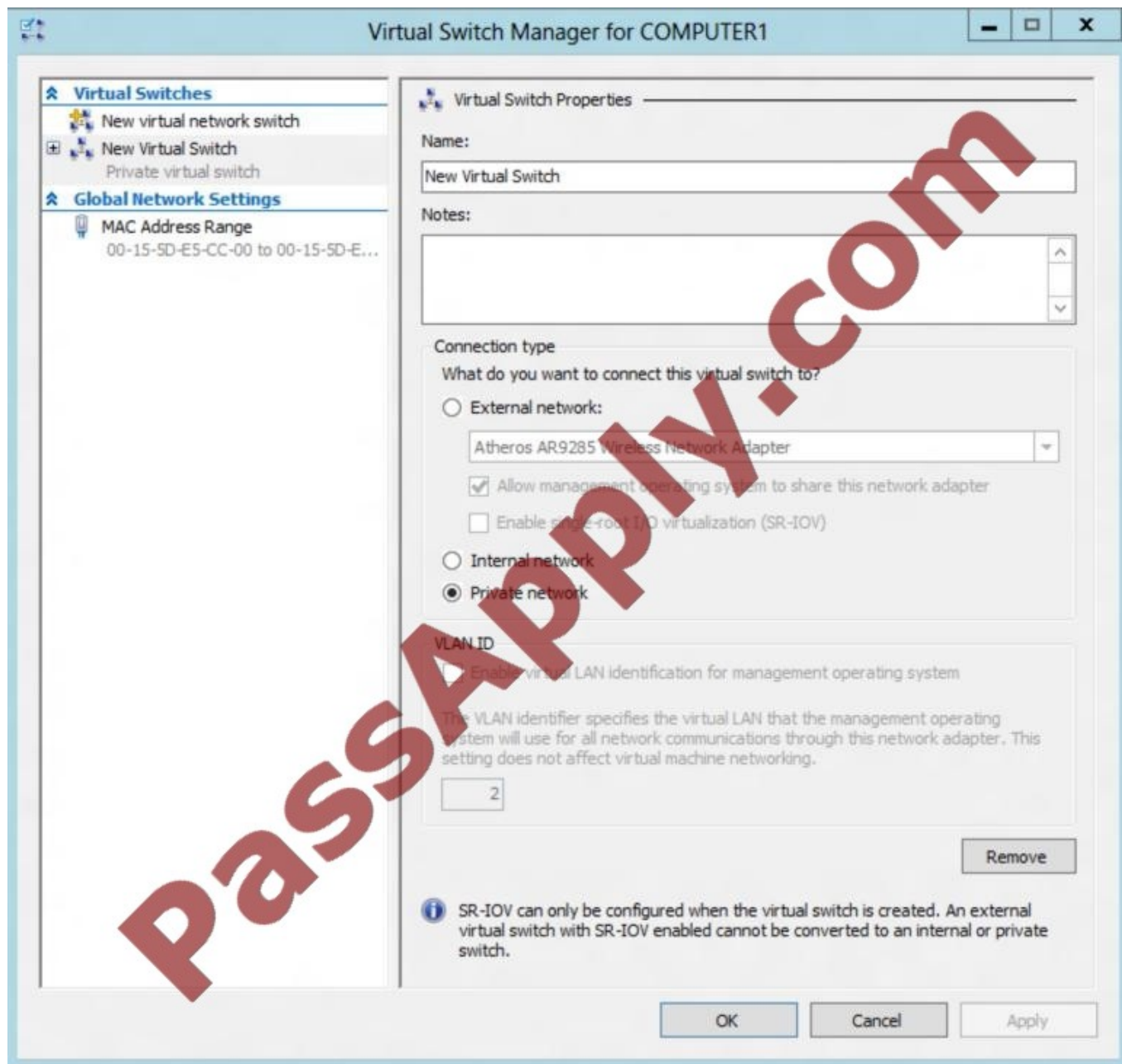
Correct Answer: C



QUESTION 3

A company has an Active Directory Domain Services (AD DS) domain with one physical domain controller. All client computers run Windows 8.

A client computer hosts a Windows 8 virtual machine (VM) test environment. The VMs are connected to a private virtual switch that is configured as shown in the Virtual Switch Manager exhibit. (Click the Exhibit button.)



The VMS are unable to connect to the domain controller. You have the following requirements:

Configure the test environment to allow VMs to communicate with the domain controller.

Ensure that the VMs can communicate with other VMS fl the test environment when the domain controller is unavailable.



You need to meet the requirements.

What should you do first?

- A. Create a new virtual switch with an Internal Network connection type.
- B. Create a new virtual switch with a Private Network connection type.
- C. Create a new virtual switch with an External Network connection type.
- D. Change the connection type of the private virtual switch to Internal only.

Correct Answer: C

QUESTION 4

You are configuring a computer that will be used in a kiosk in a public area. You install a new internal hard drive.

You need to protect the computer from starting an unauthorized operating system.

What should you do?

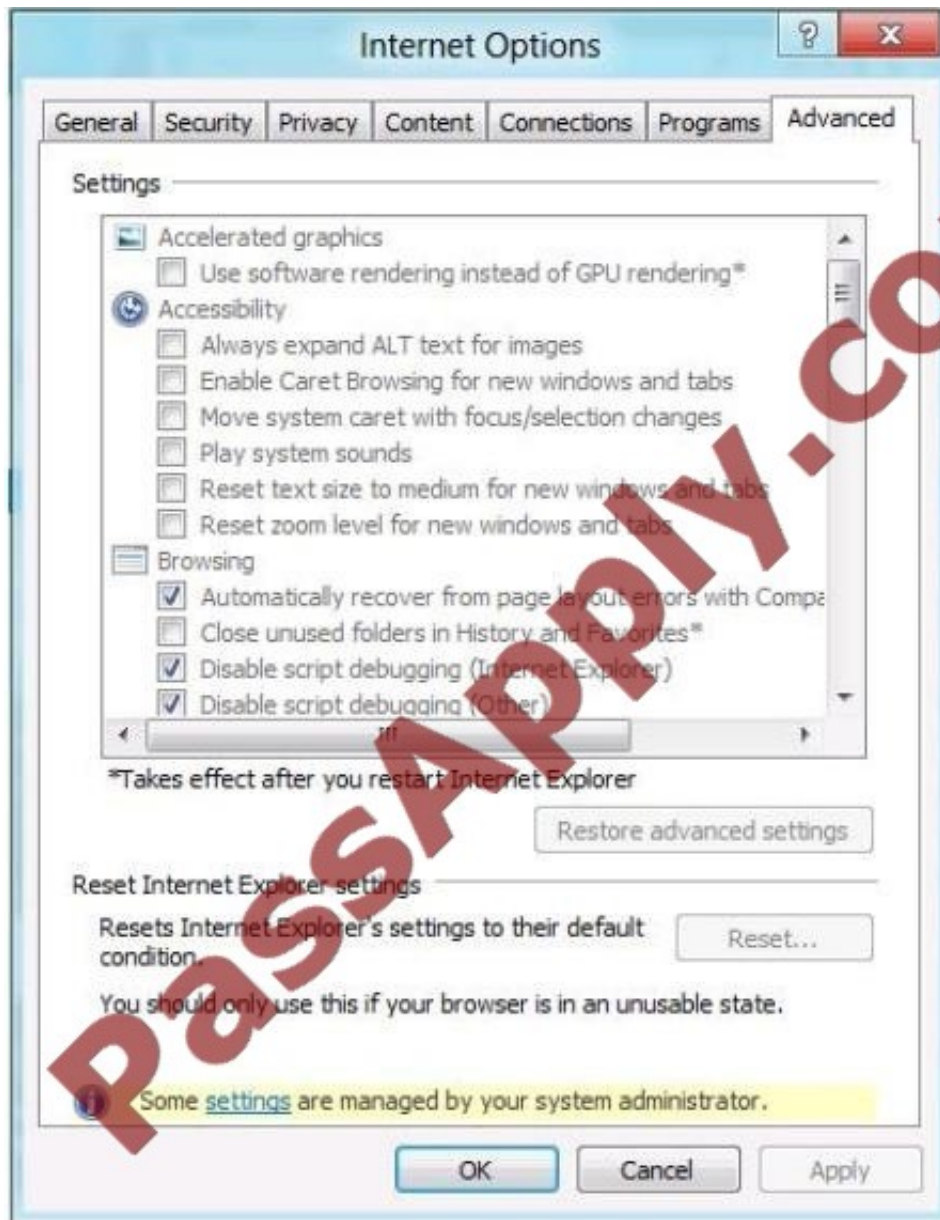
- A. Ensure that the computer BIOS supports Unified Extensible Firmware Interface (UEFI) and is enabled. Install Windows 8 Pro 64-bit using UEFI and install it on the internal hard drive.
- B. Install Windows 8 Pro 64-bit on the internal hard drive. Enable BitLocker on the internal hard disk.
- C. Partition the internal hard drive as MBR disk. Install Windows 8 Enterprise 64-bit.
- D. Partition the internal hard drive as GPT disk. Install Windows 8 Pro 64-bit.

Correct Answer: A

QUESTION 5

You are troubleshooting a computer that runs Windows 8. The computer is not joined to a domain.

You are unable to change any of the advanced Internet options, which are shown in the Advanced Internet Options exhibit. (Click the Exhibit button.)



You need to ensure that you can change the advanced Internet options. Which tool should you use?

- A. Credential Manager
- B. Authorization Manager
- C. Group Policy Object Editor
- D. Ease of Access Center

Correct Answer: C

[70-687 VCE Dumps](#)

[70-687 Practice Test](#)

[70-687 Exam Questions](#)



To Read the [Whole Q&As](#), please purchase the [Complete Version](#) from [Our website](#).

Try our product !

100% Guaranteed Success

100% Money Back Guarantee

365 Days Free Update

Instant Download After Purchase

24x7 Customer Support

Average 99.9% Success Rate

More than 800,000 Satisfied Customers Worldwide

Multi-Platform capabilities - [Windows](#), [Mac](#), [Android](#), [iPhone](#), [iPod](#), [iPad](#), [Kindle](#)

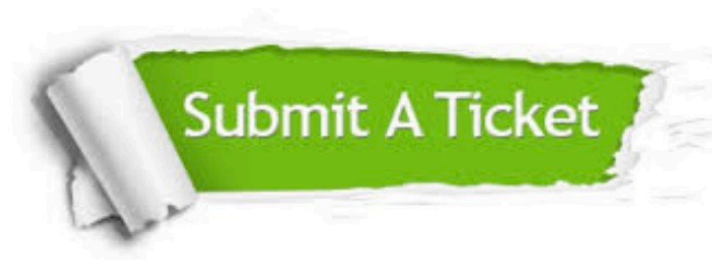
We provide exam PDF and VCE of Cisco, Microsoft, IBM, CompTIA, Oracle and other IT Certifications.
You can view Vendor list of All Certification Exams offered:

<https://www.passapply.com/allproducts>

Need Help

Please provide as much detail as possible so we can best assist you.

To update a previously submitted ticket:



 One Year Free Update Free update is available within One Year after your purchase. After One Year, you will get 50% discounts for updating. And we are proud to boast a 24/7 efficient Customer Support system via Email.	 Money Back Guarantee To ensure that you are spending on quality products, we provide 100% money back guarantee for 30 days from the date of purchase.	 Security & Privacy We respect customer privacy. We use McAfee's security service to provide you with utmost security for your personal information & peace of mind.
---	---	--

Any charges made through this site will appear as Global Simulators Limited.

All trademarks are the property of their respective owners.

Copyright © passapply, All Rights Reserved.