



70-687^{Q&As}

Configuring Windows 8.1

Pass Microsoft 70-687 Exam with 100% Guarantee

Free Download Real Questions & Answers **PDF** and **VCE** file from:

<https://www.passapply.com/70-687.html>

100% Passing Guarantee
100% Money Back Assurance

Following Questions and Answers are all new published by Microsoft
Official Exam Center

-  **Instant Download** After Purchase
-  **100% Money Back** Guarantee
-  **365 Days** Free Update
-  **800,000+** Satisfied Customers





QUESTION 1

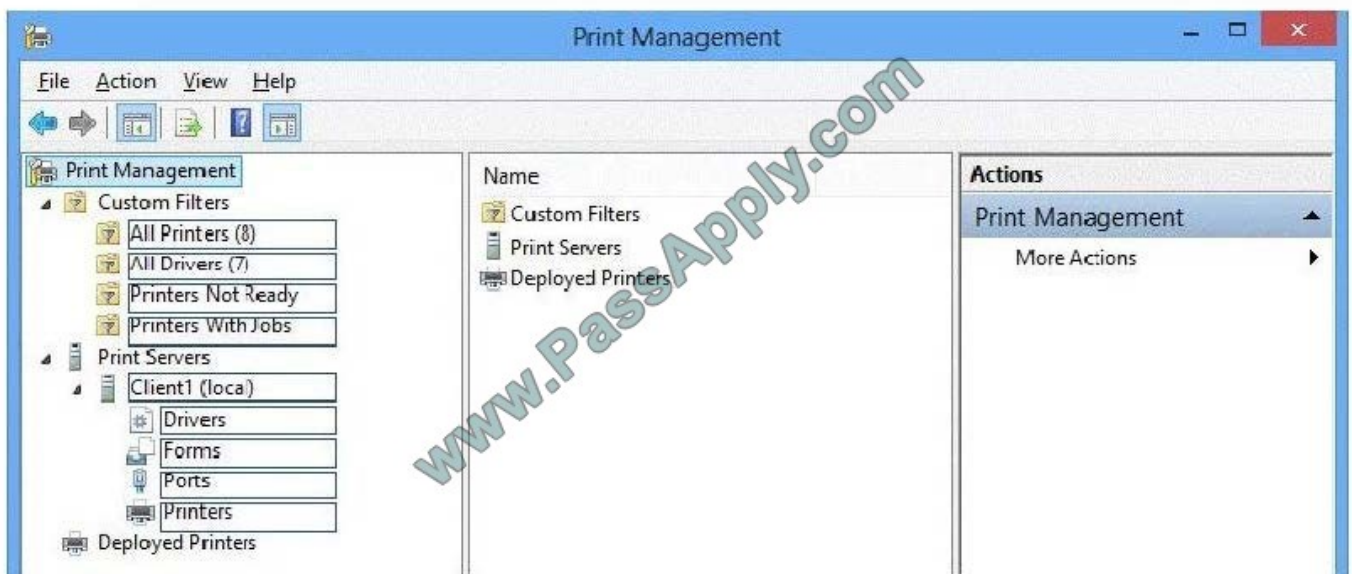
You administer Windows 8.1 Pro computers in your company network, including a computer named Wst1. Wst1 is configured with multiple shared printer queues.

Wst1 indicates hardware errors. You decide to migrate the printer queues from Wst1 to a new computer named Client1.

You export the printers on Wst1 to a file. You need to import printers from the file to Client1.

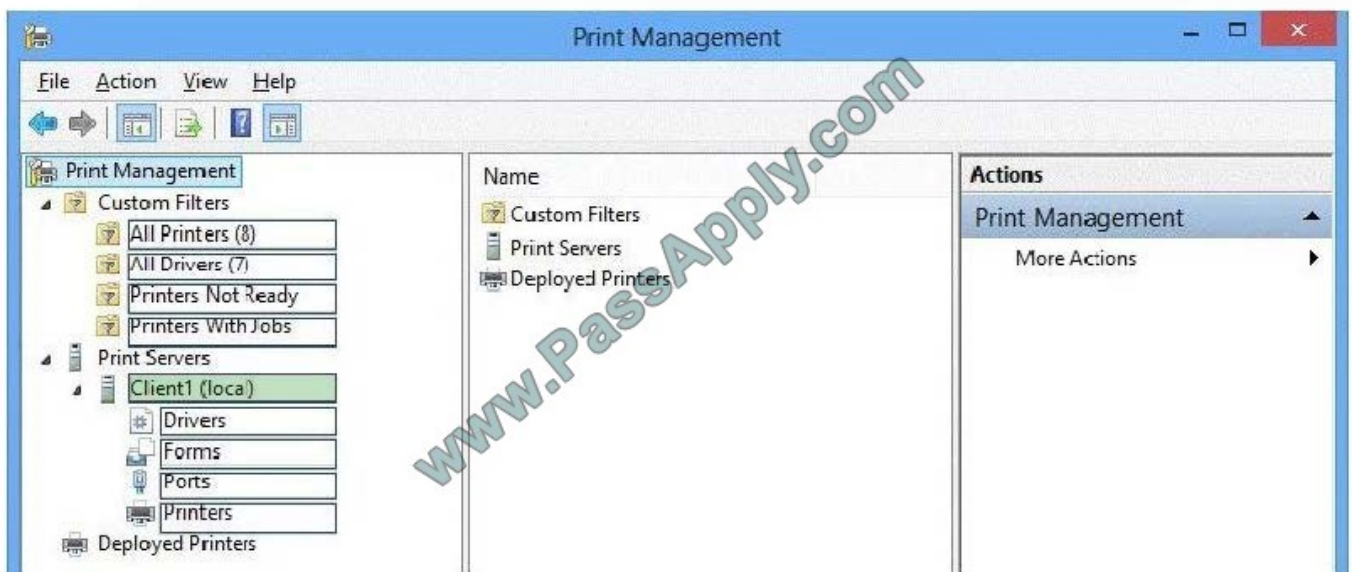
From the Print Management console, which Print Management node should you select? (To answer, select the appropriate node in the answer area.)

Answer Area



Correct Answer:

Answer Area





QUESTION 2

A company has 100 client computers that run Windows 8.

You plan to install a custom app that requires a license key.

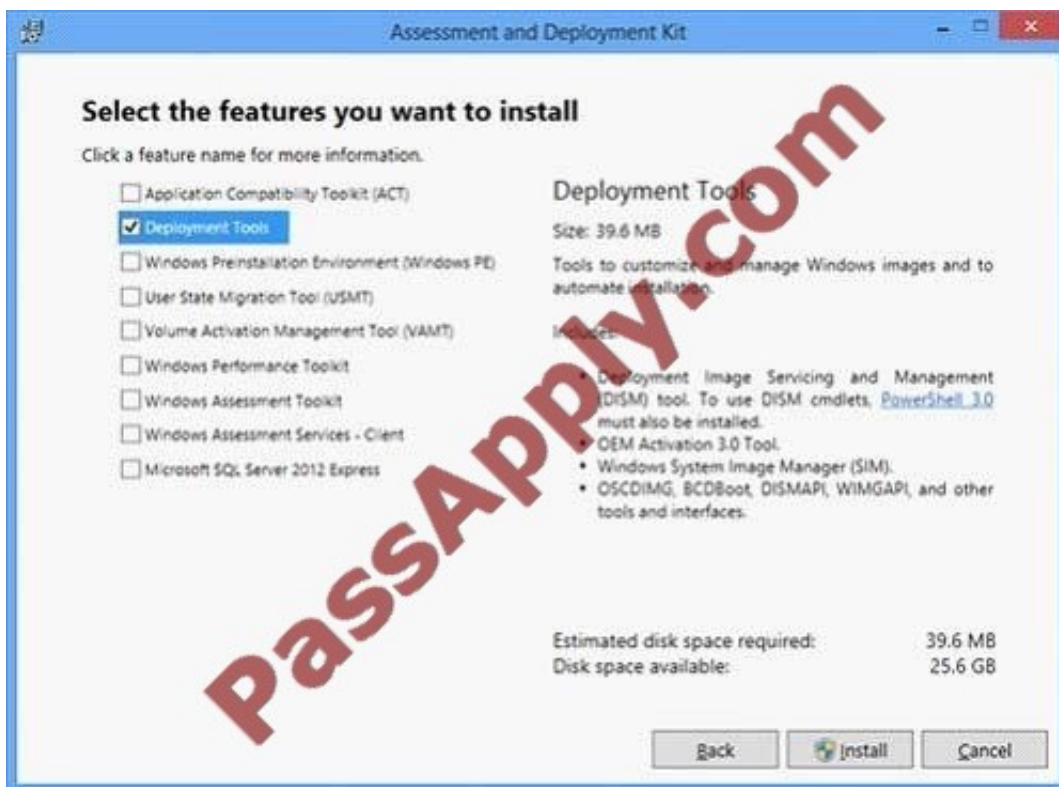
You need to ensure that the installation process does not prompt for the manual entry of a license key.

What should you do?

- A. Install and run the Microsoft Deployment Toolkit.
- B. Install and run the Microsoft Assessment and Planning Toolkit.
- C. Install and run the Windows App Certification Kit.
- D. Install and run the Windows Application Compatibility Toolkit.

Correct Answer: A

<http://tweaks.com/windows/65179/how-to-install-windows-8-without-a-product-key/> Windows Assessment and Deployment Kit for Windows 8:



QUESTION 3



You are working with a virtual machine (VM) named NYC-DC1 on a Windows 8.1 computer. The status of NYC-DC1 in Hyper-V Manager is shown in the following graphic.

Virtual Machines			
Name	State	CPU Usage	Assigned Memory
NYC-DC1	Paused	0 %	1024 MB

You plan to create a snapshot of NYC-DC1. You select the VM in Hyper-V Manager. The Snapshot option is not available in the Actions pane or in the context menu.

You need to ensure that the Snapshot option is available.

What should you do?

- A. Resume the VM.
- B. Specify a location in which Hyper-V Manager should save snapshot files.
- C. Save the VM.
- D. Connect to the VM.
- E. Increase the Assigned Memory to at least 2048 MB.

Correct Answer: A

QUESTION 4

A company has Windows 8.1 client computers.

A Windows Server Update Services (WSUS) server has been configured to manage the client computer updates.

You need to configure the client computers to join a WSUS group named Computers and to automatically receive updates from the WSUS server.

Which two Group Policy Object (GPO) settings should you configure? (To answer, select the appropriate two settings from the GPO Editor in the answer area.)



Answer Area

Setting	State
Do not display 'Install Updates and Shut Down' option in Shut Down Windows dial...	Not configured
Do not adjust default option to 'Install Updates and Shut Down' in Shut Down Win...	Not configured
Enabling Windows Update Power Management to automatically wake up the syst...	Not configured
Configure Automatic Updates	Not configured
Specify intranet Microsoft update service location	Not configured
Automatic Updates detection frequency	Not configured
Allow non-administrators to receive update notifications	Not configured
Turn on Software Notifications	Not configured
Allow Automatic Updates immediate installation	Not configured
Turn on recommended updates via Automatic Updates	Not configured
No auto-restart with logged on users for scheduled automatic updates installations	Not configured
Re-prompt for restart with scheduled installations	Not configured
Delay Restart for scheduled installations	Not configured
Reschedule Automatic Updates scheduled installations	Not configured
Enable client-side targeting	Not configured
Allow signed updates from an intranet Microsoft update service location	Not configured

Correct Answer:

Answer Area

Setting	State
Do not display 'Install Updates and Shut Down' option in Shut Down Windows dial...	Not configured
Do not adjust default option to 'Install Updates and Shut Down' in Shut Down Win...	Not configured
Enabling Windows Update Power Management to automatically wake up the syst...	Not configured
Configure Automatic Updates	Not configured
Specify intranet Microsoft update service location	Not configured
Automatic Updates detection frequency	Not configured
Allow non-administrators to receive update notifications	Not configured
Turn on Software Notifications	Not configured
Allow Automatic Updates immediate installation	Not configured
Turn on recommended updates via Automatic Updates	Not configured
No auto-restart with logged on users for scheduled automatic updates installations	Not configured
Re-prompt for restart with scheduled installations	Not configured
Delay Restart for scheduled installations	Not configured
Reschedule Automatic Updates scheduled installations	Not configured
Enable client-side targeting	Not configured
Allow signed updates from an intranet Microsoft update service location	Not configured

QUESTION 5



You provide tech support for a small home business. One of its Windows 8 computers is having occasional problems opening and saving files. You suspect that there is a problem with the hard drive but need to verify that it is not just a problem with one of the three volumes on the disk.

You start diskpart and set the focus to disk 0,

You need to obtain the properties of the hard disk as well as the health status of the volumes that reside on it.

Which command should you run next?

- A. List partition
- B. Detail volume
- C. Detail disk
- D. Attributes volume

Correct Answer: A

Reference: [http://msdn.microsoft.com/en-us/library/ff794606\(v=winembedded.60\).aspx](http://msdn.microsoft.com/en-us/library/ff794606(v=winembedded.60).aspx)

[70-687 PDF Dumps](#)

[70-687 Exam Questions](#)

[70-687 Braindumps](#)



To Read the [Whole Q&As](#), please purchase the [Complete Version](#) from [Our website](#).

Try our product !

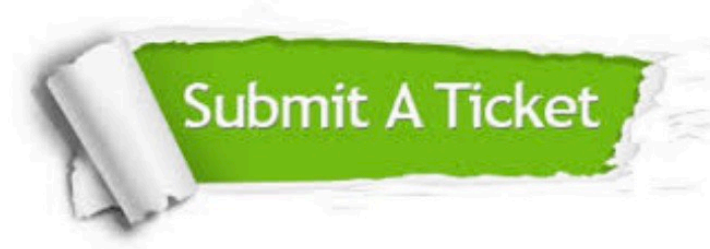
100% Guaranteed Success
100% Money Back Guarantee
365 Days Free Update
Instant Download After Purchase
24x7 Customer Support
Average 99.9% Success Rate
More than 800,000 Satisfied Customers Worldwide
Multi-Platform capabilities - [Windows](#), [Mac](#), [Android](#), [iPhone](#), [iPod](#), [iPad](#), [Kindle](#)

We provide exam PDF and VCE of Cisco, Microsoft, IBM, CompTIA, Oracle and other IT Certifications.
You can view Vendor list of All Certification Exams offered:

<https://www.passapply.com/allproducts>

Need Help

Please provide as much detail as possible so we can best assist you.
To update a previously submitted ticket:



 <p>One Year Free Update Free update is available within One Year after your purchase. After One Year, you will get 50% discounts for updating. And we are proud to boast a 24/7 efficient Customer Support system via Email.</p>	 <p>Money Back Guarantee To ensure that you are spending on quality products, we provide 100% money back guarantee for 30 days from the date of purchase.</p>	 <p>Security & Privacy We respect customer privacy. We use McAfee's security service to provide you with utmost security for your personal information & peace of mind.</p>
---	---	--

Any charges made through this site will appear as Global Simulators Limited.
All trademarks are the property of their respective owners.
Copyright © passapply, All Rights Reserved.