



70-686^{Q&As}

Windows 7, Enterprise Desktop Administrator

Pass Microsoft 70-686 Exam with 100% Guarantee

Free Download Real Questions & Answers **PDF** and **VCE** file from:

<https://www.passapply.com/70-686.html>

100% Passing Guarantee
100% Money Back Assurance

Following Questions and Answers are all new published by Microsoft
Official Exam Center

-  **Instant Download** After Purchase
-  **100% Money Back** Guarantee
-  **365 Days** Free Update
-  **800,000+** Satisfied Customers





QUESTION 1

You need to ensure that the company's remote computers receive Windows updates at the same time as the internal computers.

What should you do?

- A. Implement System Center Operations Manager (OpsMgr)
- B. Install the Windows Deployment Services (WDS) role.
- C. Install BranchCache in distributed mode.
- D. Deploy DirectAccess.

Correct Answer: D

QUESTION 2

You are designing an implementation of BitLocker. You create a GPO with BitLocker settings that conform to company requirements.

You need to design an implementation strategy that supports the company requirements.

What should you do? (Choose all that apply.)

- A. Link the GPO to the Munich-Computers OU. Use a security filter to apply the GPO to all Munich desktop computers.
- B. Block the Munich-Computers OU from inheriting policies.
- C. Link the GPO to the Madrid-Computers OU. Use a security filter to apply the GPO to all Madrid desktop computers.
- D. Link the GPO to the Munich-Users OU.
- E. Create and use a WMI filter that targets all portable computers with the GPO. Link the WMI filter to the GPO
- F. Link the GPO to the root of the AD DS domain.

Correct Answer: BCEF

QUESTION 3

A company has client computers that run Windows 7. A new corporate security policy states that all client computers in the legal department should allow only inbound and outbound network connections for which there is an existing firewall

rule.

You need to ensure that all client computers in the legal department are configured to follow the new security policy.

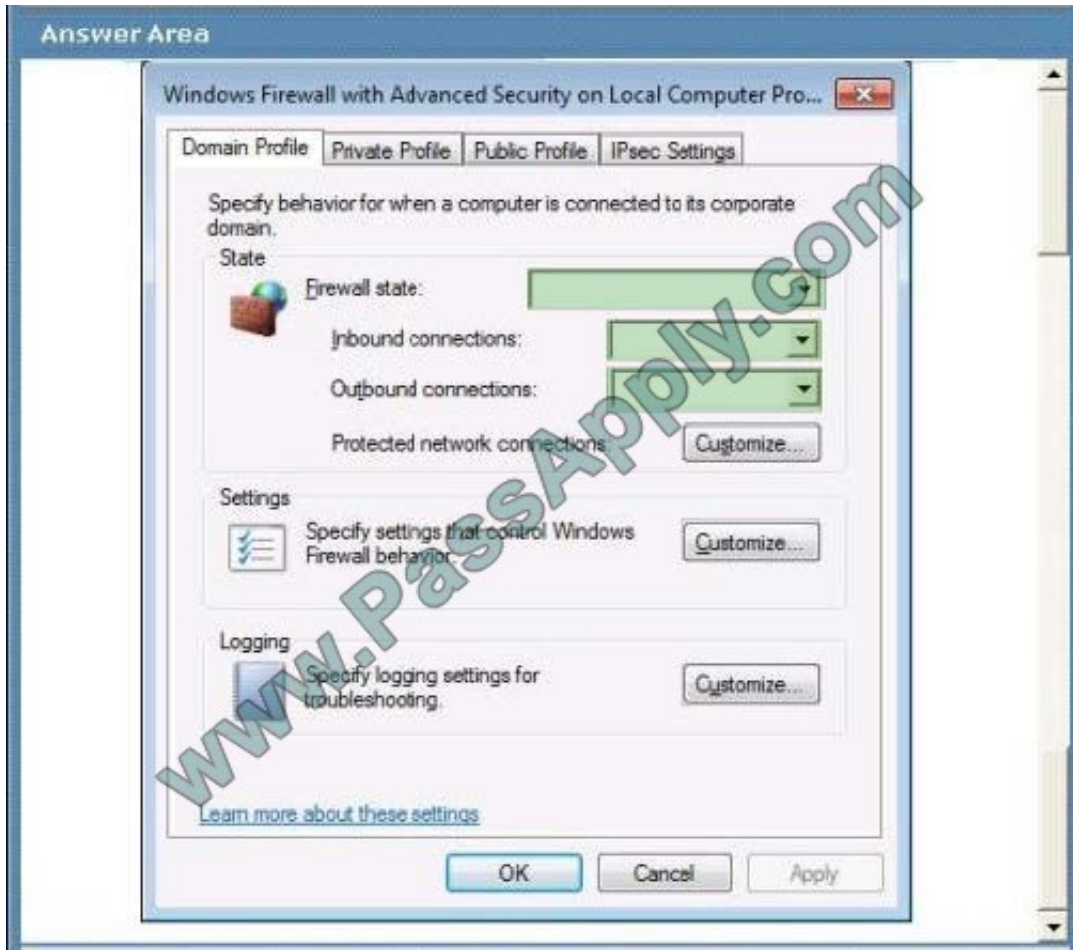
Which settings should you select? To answer, select the appropriate setting or settings in the work area.



Hot Area:



Correct Answer:



QUESTION 4

Your company has 1,000 Windows XP computers. You plan to migrate these computers to Windows 7.

You need to detect compatibility issues that can occur during the installation and configuration process for a specific application.

Which tool should you use?

- A. Windows Compatibility Evaluator
- B. Setup Analysis Tool
- C. Inventory Collector
- D. Update Compatibility Evaluator

Correct Answer: B

[http://technet.microsoft.com/pt-pt/library/cc766109\(v=ws.10\).aspx](http://technet.microsoft.com/pt-pt/library/cc766109(v=ws.10).aspx) The Setup Analysis Tool (SAT) automates the running of application installations while monitoring the actions taken by each application's installer. The standalone version of



SAT can monitor any MSI-based installers and third-party installers. However, the Virtual SAT tool can only monitor MSI-based installers and third-party installers that run unattended.

hints:

You need to detect compatibility issues that can occur during the installation and configuration process for a specific application.

QUESTION 5

Your company has client computers that run Windows XP Professional.

You are planning to install Windows 7 Enterprise on the existing client computers.

You need to design a user state migration strategy that minimizes network bandwidth and server use when user data is being migrated.

What should you do?

- A. Use the Refresh Computer method and a hard-link migration store.
- B. Use the Refresh Computer method and a compressed migration store.
- C. Use the Replace Computer method and a hard-link migration store.
- D. Use the Replace Computer method and a compressed migration store.

Correct Answer: A

A hard-link migration store enables you to perform an in-place migration where all user state is maintained on the computer while the old operating system is removed and the new operating system is installed; this is why it is best suited for

the computer-refresh scenario.

[http://technet.microsoft.com/en-us/library/dd560753\(v=ws.10\).aspx](http://technet.microsoft.com/en-us/library/dd560753(v=ws.10).aspx)

Refresh Scenario

Similar to a new installation, the refresh scenario performs a clean setup. The difference is that the target computer already contains Windows, for which files and settings will be preserved (installed applications are not taken into

consideration). This scenario is especially useful in the event that preserving the user state is a priority. It still leverages the consistency benefits that come through a new installation. You can automate this scenario with the latest version of

the User State Migration Tool (USMT 4.0), which will collect pertinent data for each user state found in the system, and restore it after the clean installation is performed.

Replace Scenario

This is similar to the refresh scenario, except the target system is a new computer that does not yet contain any files or settings. The scenario consists of conducting a new installation on the target computer, and then using the USMT 4.0 to

transfer files and settings from the old computer. You can run this scenario side-by-side with an older system running Windows XP or



Windows Vista.

<http://technet.microsoft.com/en-us/magazine/hh124549.aspx> Hints:

Install on existing client computer = refresh

Replace a new client computer = Replace

[70-686 PDF Dumps](#)

[70-686 Exam Questions](#)

[70-686 Braindumps](#)



To Read the [Whole Q&As](#), please purchase the [Complete Version](#) from [Our website](#).

Try our product !

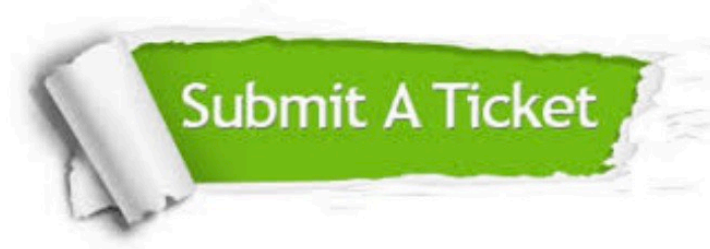
100% Guaranteed Success
100% Money Back Guarantee
365 Days Free Update
Instant Download After Purchase
24x7 Customer Support
Average 99.9% Success Rate
More than 800,000 Satisfied Customers Worldwide
Multi-Platform capabilities - [Windows](#), [Mac](#), [Android](#), [iPhone](#), [iPod](#), [iPad](#), [Kindle](#)

We provide exam PDF and VCE of Cisco, Microsoft, IBM, CompTIA, Oracle and other IT Certifications. You can view Vendor list of All Certification Exams offered:

<https://www.passapply.com/allproducts>

Need Help

Please provide as much detail as possible so we can best assist you.
To update a previously submitted ticket:



 <p>One Year Free Update Free update is available within One Year after your purchase. After One Year, you will get 50% discounts for updating. And we are proud to boast a 24/7 efficient Customer Support system via Email.</p>	 <p>Money Back Guarantee To ensure that you are spending on quality products, we provide 100% money back guarantee for 30 days from the date of purchase.</p>	 <p>Security & Privacy We respect customer privacy. We use McAfee's security service to provide you with utmost security for your personal information & peace of mind.</p>
---	---	--

Any charges made through this site will appear as Global Simulators Limited.
All trademarks are the property of their respective owners.
Copyright © passapply, All Rights Reserved.