



70-685^{Q&As}

Windows 7, Enterprise Desktop Support Technician

Pass Microsoft 70-685 Exam with 100% Guarantee

Free Download Real Questions & Answers **PDF** and **VCE** file from:

<https://www.passapply.com/70-685.html>

100% Passing Guarantee
100% Money Back Assurance

Following Questions and Answers are all new published by Microsoft
Official Exam Center

- ⚙ **Instant Download** After Purchase
- ⚙ **100% Money Back** Guarantee
- ⚙ **365 Days** Free Update
- ⚙ **800,000+** Satisfied Customers





QUESTION 1

All client computers on your company network run Windows 7 and are members of an Active Directory Domain Services domain.

You deploy network printers.

You need to ensure that employees are able to find these printers.

What should you do first?

- A. Ensure that your print servers include Windows 7 print drivers.
- B. In the Location Aware Printing applet, choose the Change my default printer when I change networks setting.
- C. Create a group policy to enable the Automatically publish new printers in Active Directory policy.
- D. Create a group policy to enable the Prune printers that are not automatically republished policy. In the Prune non-republishing printers drop-down list, select the Whenever printer is not found option.

Correct Answer: C



QUESTION 2

Your company has a main office and a branch office. The network contains a single Active Directory domain. All servers



and client computers are members of the domain.

A print server is located in the branch office. All other servers are located in the main office. All servers run Windows Server 2008 R2. All client computers run Windows 7.

Users in the branch office report poor performance when they access an intranet Web site in the main office.

You need to recommend changes to the network to improve the performance of intranet access by computers in the branch office.

What should you recommend implementing?

- A. A VPN
- B. BranchCache
- C. HTTP redirect
- D. WebDav

Correct Answer: B

QUESTION 3

All client computers on your company network run Windows 7.

You discover that memory usage on the computers is high.

You need to find the cause of the issue.

What should you do?

- A. Run the Windows Memory Diagnostic tool on each computer.
- B. Run the Resource Monitor tool and review the content in the Memory tab.
- C. Open Action Center and run the Hardware and Devices troubleshooting program.
- D. Open Performance Information and Tools and view the Windows Experience Index.

Correct Answer: B

QUESTION 4

A client computers on your company network run Windows 7. Employees log on to their computers as Standard users. There is a zero-day malicious software attack affecting your network. Employees receive User AccountControl (UAC)

messages frequently requesting permission to elevate privileges. You know that this malicious software attack is responsible for these UAC prompts.

You need to ensure that employees are unable to provide elevated credentials.



What should you do?

- A. Configure the Group Policy User Account Control: Only elevate executables that are signed and validated setting to Disabled.
- B. Configure the Group Policy User Account Control: Switch to the secure desktop when prompting for elevation setting to Disabled.
- C. Configure the Group Policy User Account Control: Behavior of the elevation prompt for standard users setting to Automatically deny elevation requests.
- D. Configure the Group Policy User Account Control: Behavior of the elevation prompt for administrators in Admin Approval Mode setting to Prompt for consent for non-Windows binaries.

Correct Answer: C

QUESTION 5

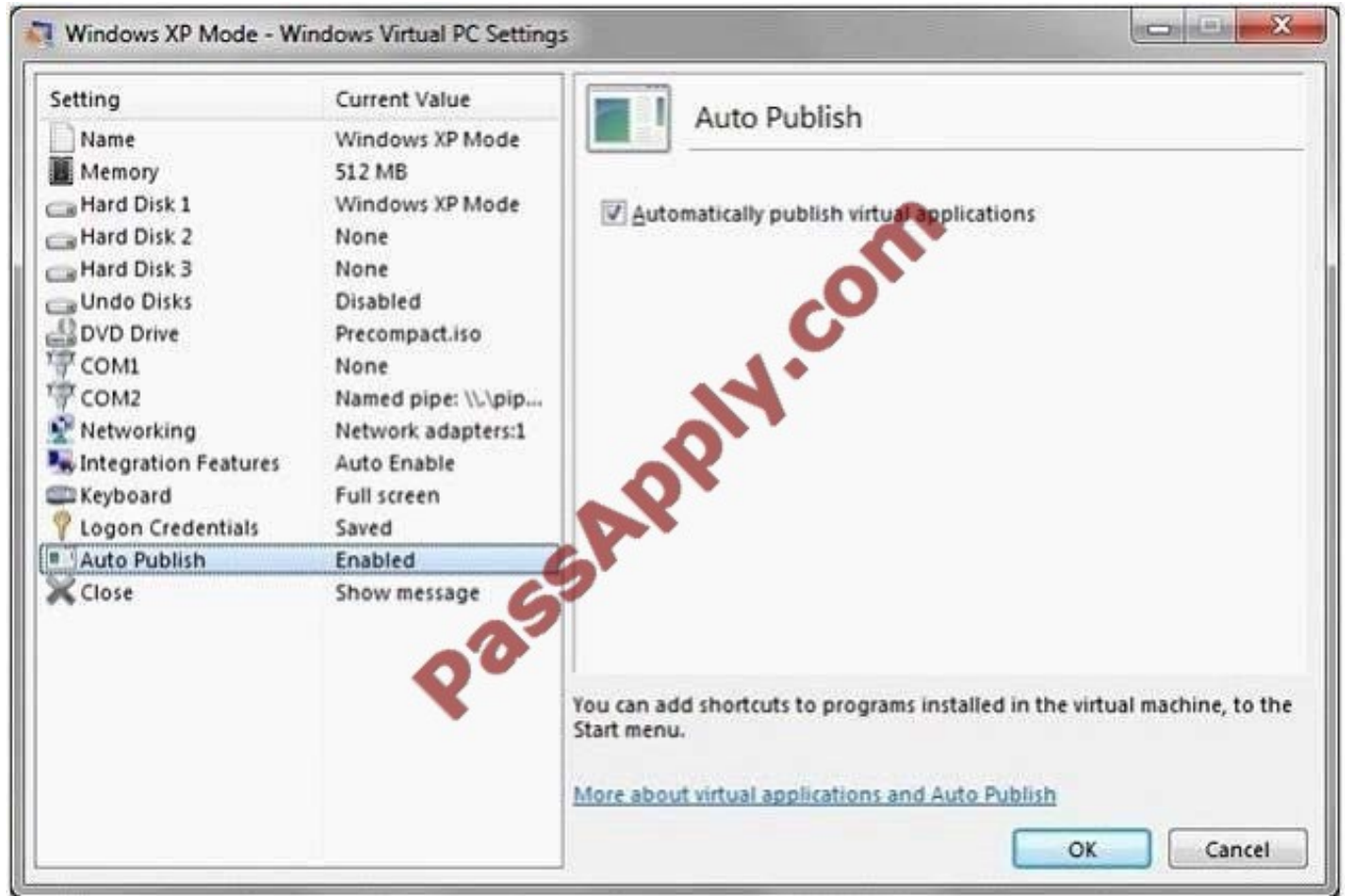
All client computers on your company network run Windows 7. Several legacy software applications are made available on the computers by using Windows XP Mode (XPM). Employees report that all Start menu shortcuts for the legacy applications are missing from their computers.

You need to ensure that all employees can access the Start menu shortcuts for the legacy applications.

What should you do?

- A. Copy the program icons to the Start menu of the Windows 7 computers.
- B. Reinstall the applications on the XPM machines and select the repair option.
- C. Configure the applications as Default Programs on the Windows 7 computers.
- D. Enable the Auto Publish option for Virtual Machine Settings on the Windows 7 computers.

Correct Answer: D



http://blogs.technet.com/b/windows_vpc/archive/2009/11/02/publishing-virtual-applications-in-windows-virtualpc.aspx
<http://technet.microsoft.com/en-us/gg132940>

[70-685 PDF Dumps](#)

[70-685 VCE Dumps](#)

[70-685 Exam Questions](#)



VCE & PDF

PassApply.com

<https://www.passapply.com/70-685.html>

2021 Latest passapply 70-685 PDF and VCE dumps Download

To Read the [Whole Q&As](#), please purchase the [Complete Version](#) from [Our website](#).

Try our product !

100% Guaranteed Success

100% Money Back Guarantee

365 Days Free Update

Instant Download After Purchase

24x7 Customer Support

Average 99.9% Success Rate

More than 800,000 Satisfied Customers Worldwide

Multi-Platform capabilities - [Windows](#), [Mac](#), [Android](#), [iPhone](#), [iPod](#), [iPad](#), [Kindle](#)

We provide exam PDF and VCE of Cisco, Microsoft, IBM, CompTIA, Oracle and other IT Certifications. You can view Vendor list of All Certification Exams offered:

<https://www.passapply.com/allproducts>

Need Help

Please provide as much detail as possible so we can best assist you.

To update a previously submitted ticket:



 One Year Free Update <p>Free update is available within One Year after your purchase. After One Year, you will get 50% discounts for updating. And we are proud to boast a 24/7 efficient Customer Support system via Email.</p>	 Money Back Guarantee <p>To ensure that you are spending on quality products, we provide 100% money back guarantee for 30 days from the date of purchase.</p>	 Security & Privacy <p>We respect customer privacy. We use McAfee's security service to provide you with utmost security for your personal information & peace of mind.</p>
---	---	--

Any charges made through this site will appear as Global Simulators Limited.

All trademarks are the property of their respective owners.

Copyright © passapply, All Rights Reserved.