



70-685^{Q&As}

Windows 7, Enterprise Desktop Support Technician

Pass Microsoft 70-685 Exam with 100% Guarantee

Free Download Real Questions & Answers **PDF** and **VCE** file from:

<https://www.passapply.com/70-685.html>

100% Passing Guarantee
100% Money Back Assurance

Following Questions and Answers are all new published by Microsoft
Official Exam Center

- ⚙ **Instant Download** After Purchase
- ⚙ **100% Money Back** Guarantee
- ⚙ **365 Days** Free Update
- ⚙ **800,000+** Satisfied Customers





QUESTION 1

A company has computers running Windows 7 Enterprise. All of the company's portable computers have been configured to use the Balanced power plan with the default plan settings.

The battery power of one user's portable computer drains much faster than other similar model portable computers.

You need to gather information from the user's portable computer to ascertain the cause of the battery power drain.

Which two actions should you perform in sequence?

(To answer, move the appropriate actions from the list of actions to the answer area and arrange them in the correct order.)

Select and Place:

Open an elevated command prompt.

Open a standard command prompt.

Run the **Power_Troubleshooter.ps1** script.

Run the **powercfg.ps1** script.

Run the **powercfg.exe - energy** command.

Run the **powercfg.exe - devicequery all_devices** command.

Correct Answer:

Open an elevated command prompt.

Run the **powercfg.exe - energy** command.



QUESTION 2

The help desk reports that several users use the previous version of App1, which causes some data to become corrupt. You need to recommend a solution to prevent all users from using the previous version of App1. What should you recommend?

- A. that a domain administrator create a GPO linked to the domain and configure AppLocker settings in the GPO
- B. that a domain administrator create a GPO linked to the domain and configure Software Installation settings in the GPO
- C. that the new version of App1 be added to the Data Execution Prevention (DEP) settings on each client computer
- D. that the previous version of App1 be added to the Data Execution Prevention (DEP) settings on each client computer

Correct Answer: A

QUESTION 3

All client computers on a company's network are members of an Active Directory Domain Services domain.

The Finance team uses Remote Desktop to access Windows 7 virtual machines that are hosted on a server that runs Windows Server 2008 Hyper-V.

The team members receive the following error message when they attempt to log on to the virtual machines: "The trust relationship between this workstation and the primary domain failed."

You discover that the Hyper-V server was recently restored from a backup.

You need to ensure that the team members can log on to the virtual machines.

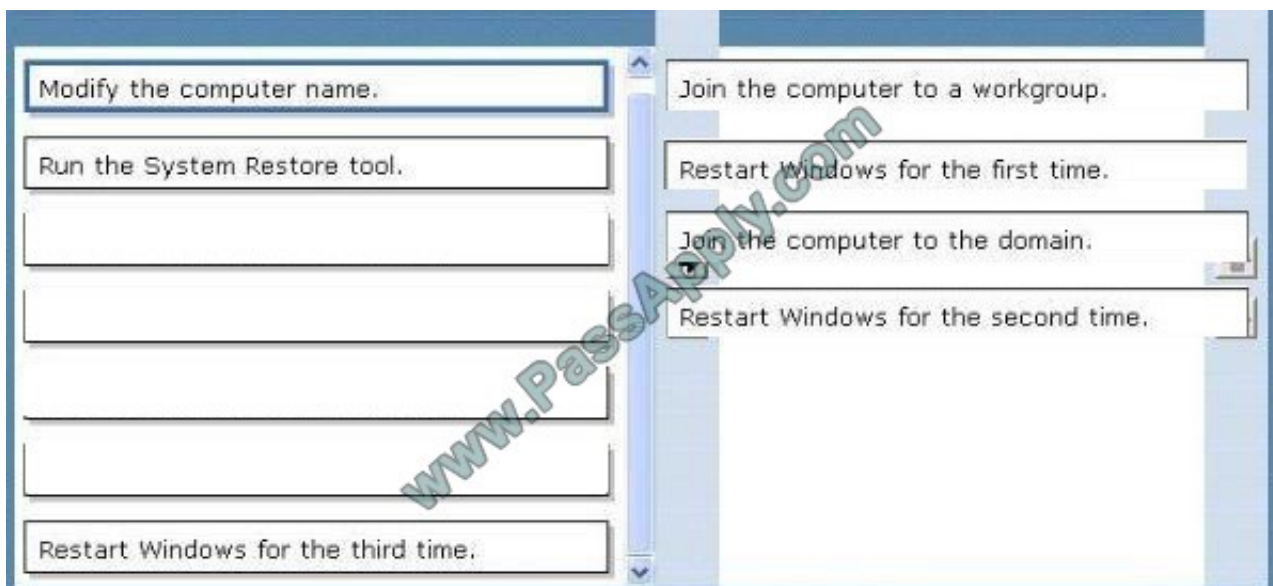
Which four actions should you perform in sequence on each virtual machine?

(To answer, move the appropriate actions from the list of actions to the answer area and arrange them in the correct order.)

Select and Place:



Correct Answer:



QUESTION 4

All client computers on your company network were recently migrated from Windows XP to Windows 7. Your company uses a proprietary software program that is installed by using a Windows Installer (.msi) file. Employees who require the application must install it on their computers. Employees are unable to install the software due to compatibility issues. You need to ensure that the application can be installed.

What should you do?

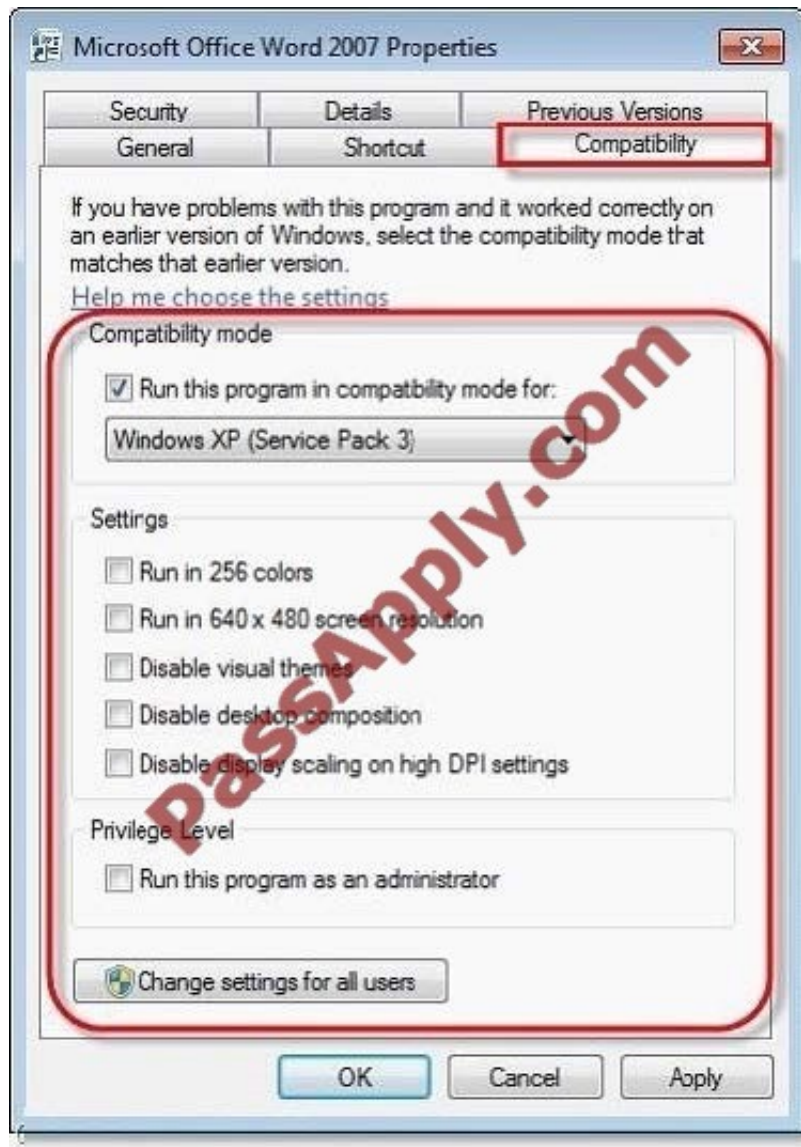
- A. Disable UAC prompts.
- B. Add the user to the local Administrators group.



- C. Run the .msi file from an elevated command prompt.
- D. Modify the properties of the .msi file to run in compatibility mode.

Correct Answer: D

Chapter 9 Lesson 2 p 360



<http://windows.microsoft.com/en-US/windows-vista/Make-older-programs-run-in-this-version-of-Windows>

QUESTION 5

Existing Internet Explorer security settings and GPOs are applied throughout the company. However, users are visiting websites known by Internet Explorer to host malicious content. You need to ensure that users cannot visit those websites.

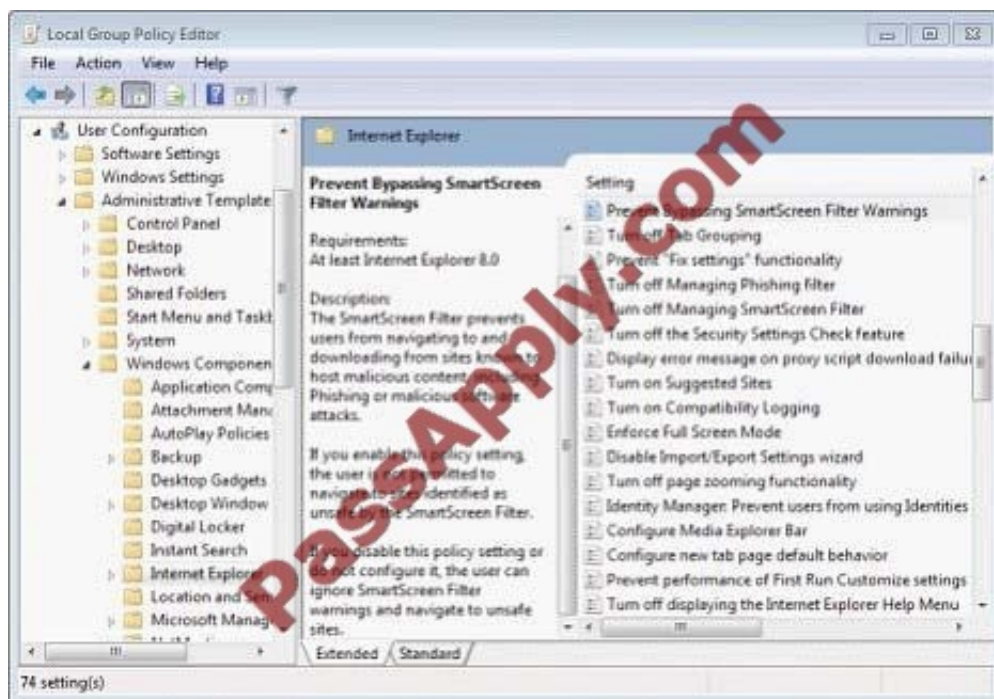
Which setting in the GPO should you enable to achieve this goal?



- A. Turn off Managing SmartScreen Filter for Internet Explorer 8
- B. Prevent Bypassing SmartScreen Filter Warnings
- C. Turn on ActiveX Filtering
- D. Prevent ignoring certificate errors
- E. Turn off Managing Phishing filter

Correct Answer: B

The SmartScreen Filter prevents users from navigating to and downloading from sites known to host malicious content, including Phishing or malicious software attacks. If you enable this policy setting, the user is not permitted to navigate to sites identified as unsafe by the SmartScreen Filter. If you disable this policy setting or do not configure it, the user can ignore SmartScreen Filter warnings and navigate to unsafe sites.



<http://maximumpcguides.com/windows-7/prevent-a-user-from-bypassing-the-smartscreen-filter- warnings-ininternet-explorer/> <http://technet.microsoft.com/en-us/library/cc985351.aspx>

[Latest 70-685 Dumps](#)

[70-685 PDF Dumps](#)

[70-685 Exam Questions](#)



VCE & PDF

PassApply.com

<https://www.passapply.com/70-685.html>

2021 Latest passapply 70-685 PDF and VCE dumps Download

To Read the [Whole Q&As](#), please purchase the [Complete Version](#) from [Our website](#).

Try our product !

100% Guaranteed Success

100% Money Back Guarantee

365 Days Free Update

Instant Download After Purchase

24x7 Customer Support

Average 99.9% Success Rate

More than 800,000 Satisfied Customers Worldwide

Multi-Platform capabilities - [Windows](#), [Mac](#), [Android](#), [iPhone](#), [iPod](#), [iPad](#), [Kindle](#)

We provide exam PDF and VCE of Cisco, Microsoft, IBM, CompTIA, Oracle and other IT Certifications. You can view Vendor list of All Certification Exams offered:

<https://www.passapply.com/allproducts>

Need Help

Please provide as much detail as possible so we can best assist you.

To update a previously submitted ticket:



 One Year Free Update <p>Free update is available within One Year after your purchase. After One Year, you will get 50% discounts for updating. And we are proud to boast a 24/7 efficient Customer Support system via Email.</p>	 Money Back Guarantee <p>To ensure that you are spending on quality products, we provide 100% money back guarantee for 30 days from the date of purchase.</p>	 Security & Privacy <p>We respect customer privacy. We use McAfee's security service to provide you with utmost security for your personal information & peace of mind.</p>
---	---	--

Any charges made through this site will appear as Global Simulators Limited.

All trademarks are the property of their respective owners.

Copyright © passapply, All Rights Reserved.