



70-685^{Q&As}

Windows 7, Enterprise Desktop Support Technician

Pass Microsoft 70-685 Exam with 100% Guarantee

Free Download Real Questions & Answers **PDF** and **VCE** file from:

<https://www.passapply.com/70-685.html>

100% Passing Guarantee
100% Money Back Assurance

Following Questions and Answers are all new published by Microsoft
Official Exam Center

-  **Instant Download** After Purchase
-  **100% Money Back** Guarantee
-  **365 Days** Free Update
-  **800,000+** Satisfied Customers





QUESTION 1

All client computers on your company network run Windows 7. Your company has a Windows Server2008 domain. You plan to use Group Policy to enable BitLocker Drive Encryption (BDE). You need to ensure that the following requirements

are met:

• All BitLocker recovery keys are stored in a central location. • Data is encrypted only after a backup of the recovery key is available.

What should you do?

- A. Run the manage-bde -on -ForceRecovery command.
- B. Enable the Choose default folder for recovery password setting.
- C. Enable the Store BitLocker recovery information in Active Directory Domain Services setting.
- D. Enable the Choose how users can recover BitLocker encrypted drives setting. Set the 256-bit recovery key to Require recovery password.

Correct Answer: C

QUESTION 2

A user lost his EFS private key and cannot access his encrypted folder. Based on the company's current configuration, you need to ascertain how to recover the

encrypted folder.

Which two actions should you perform in sequence?

(To answer, move the appropriate actions from the list of actions to the answer area and arrange them in the correct order.)

Select and Place:



From the command prompt, run the **cipher.exe /e** command.

On the client computer, run the **certutil.exe -backupdb -f** command.

Right-click the encrypted folder, go to the Advanced menu, and then remove the **Encrypt** attribute.

Log on to the computer by using the local Administrator account and enroll for a Basic EFS certificate.

Log on to the computer by using the local Administrator account and enroll for an EFS Recovery Agent certificate.

Log on to the computer by using the EFSAdmin account and then import the DRA certificate from the portable USB hard drive.

Correct Answer:

From the command prompt, run the **cipher.exe /e** command.

On the client computer, run the **certutil.exe -backupdb -f** command.

Log on to the computer by using the local Administrator account and enroll for a Basic EFS certificate.

Log on to the computer by using the local Administrator account and enroll for an EFS Recovery Agent certificate.

Right-click the encrypted folder, go to the Advanced menu, and then remove the **Encrypt** attribute.

Log on to the computer by using the EFSAdmin account and then import the DRA certificate from the portable USB hard drive.

QUESTION 3

You have an Active Directory domain. All client computers run Windows 7 and are joined to the domain.

The help desk reports that several users recently downloaded and installed malware. You discover that the users



modified the Windows Defender settings on their computers. You need to recommend a solution to prevent users from modifying their Windows Defender settings.

What should you recommend?

- A. Modify the User Account Control (UAC) settings.
- B. Modify the membership of the local Administrators group.
- C. From Program and Features, modify the Windows Features.
- D. From a Group Policy object (GPO), modify the Windows Defender settings.

Correct Answer: D

changed answer from B.to D. Chapter 5 Lesson 1 p 209 - 211 <http://sourcedaddy.com/windows-7/configuring-windows-defender-group-policy.html>

QUESTION 4

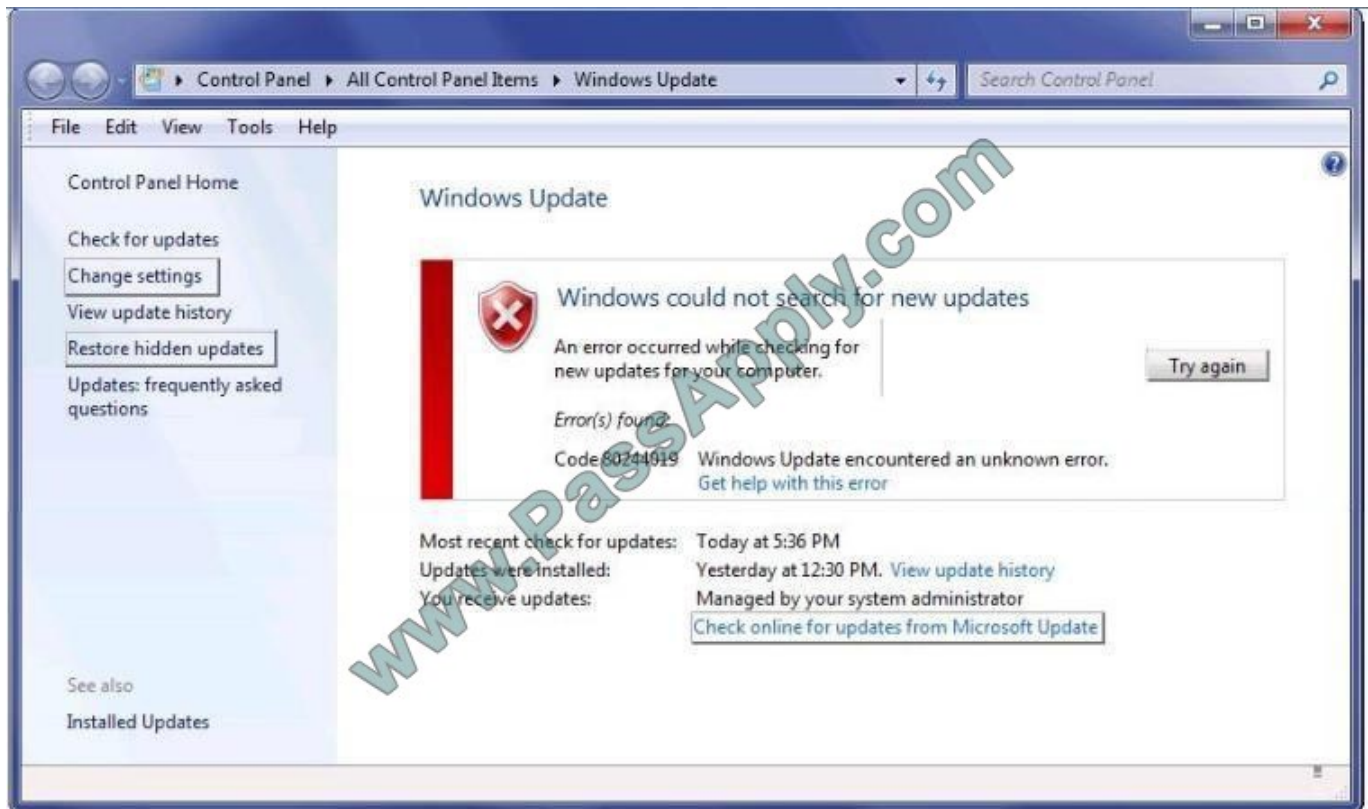
Each Windows 7 client computer in an enterprise organization receives updates from Windows Server Update Services (WSUS). Users connect to the company

network via a virtual private network (VPN) on the portable computers that are joined to the domain.

A remote user cannot update her portable computer with Windows Update and as a result is unable to connect to the VPN.

You need to ensure that the remote user can download updates when not connected to the VPN. Which setting should you select? To answer, select the appropriate setting in the work area.

Hot Area:



Correct Answer:





QUESTION 5

All client computers on your company network run Windows XP and are members of an Active Directory Domain Services domain.

You plan to migrate all computers to Windows 7. You also plan to deploy a new VPN server to support remote network access for the computers.

You need to ensure that all computers will be supported for remote access during the migration to Windows

What should you do?

- A. Set the VPN server to Layer 2 Tunneling Protocol.
- B. Set the VPN server to Secure Socket Tunneling Protocol.
- C. Set the VPN server to Internet Key Exchange version 2.
- D. Configure the Direct Access feature on the VPN server.

Correct Answer: A

[70-685 Practice Test](#)

[70-685 Study Guide](#)

[70-685 Braindumps](#)



VCE & PDF

PassApply.com

<https://www.passapply.com/70-685.html>

2021 Latest passapply 70-685 PDF and VCE dumps Download

To Read the [Whole Q&As](#), please purchase the [Complete Version](#) from [Our website](#).

Try our product !

100% Guaranteed Success

100% Money Back Guarantee

365 Days Free Update

Instant Download After Purchase

24x7 Customer Support

Average 99.9% Success Rate

More than 800,000 Satisfied Customers Worldwide

Multi-Platform capabilities - [Windows](#), [Mac](#), [Android](#), [iPhone](#), [iPod](#), [iPad](#), [Kindle](#)

We provide exam PDF and VCE of Cisco, Microsoft, IBM, CompTIA, Oracle and other IT Certifications.
You can view Vendor list of All Certification Exams offered:

<https://www.passapply.com/allproducts>

Need Help

Please provide as much detail as possible so we can best assist you.

To update a previously submitted ticket:



 One Year Free Update Free update is available within One Year after your purchase. After One Year, you will get 50% discounts for updating. And we are proud to boast a 24/7 efficient Customer Support system via Email.	 Money Back Guarantee To ensure that you are spending on quality products, we provide 100% money back guarantee for 30 days from the date of purchase.	 Security & Privacy We respect customer privacy. We use McAfee's security service to provide you with utmost security for your personal information & peace of mind.
---	---	--

Any charges made through this site will appear as Global Simulators Limited.

All trademarks are the property of their respective owners.

Copyright © passapply, All Rights Reserved.