



# 70-680<sup>Q&As</sup>

Windows 7 Configuring

## Pass Microsoft 70-680 Exam with 100% Guarantee

Free Download Real Questions & Answers **PDF** and **VCE** file from:

<https://www.passapply.com/70-680.html>

100% Passing Guarantee  
100% Money Back Assurance

Following Questions and Answers are all new published by Microsoft  
Official Exam Center

-  **Instant Download** After Purchase
-  **100% Money Back** Guarantee
-  **365 Days** Free Update
-  **800,000+** Satisfied Customers





### QUESTION 1

You have a computer that runs Windows 7.

You need to provide standard users the ability to update the drivers for display adapters.

What should you modify from the Local Group Policy?

- A. driver installation settings for the user
- B. device installation settings for the computer
- C. driver installation settings for the computer
- D. display settings for the user

Correct Answer: C

To Update the Drivers you need permissions to install drivers. Apply this to the computer for all local users, as opposed to only one user.

---

### QUESTION 2

You have a Virtual Hard Disk (VHD) and a computer that runs Windows 7. The VHD has Windows 7 installed.

You need to start the computer from the VHD.

What should you do?

- A. From Diskpart.exe, run Select vdisk.
- B. From Disk Management, modify the active partition.
- C. Run Bootcfg.exe and specify the /default parameter.
- D. Run Bcdedit.exe and modify the Windows Boot Manager settings.

Correct Answer: D

When you have created a VHD and installed a system image on it, you can use the BCDEdit tool Bcdedit.exe to add a boot entry for the VHD file in your computer running Windows 7.

---

### QUESTION 3

You have a Windows image (WIM) file that contains an image of Windows 7. The WIM file is 2 GB.

You need to ensure that you can copy the image to CD.

What should you do?

- A. Run ImageX.exe and specify the /split parameter.



- B. From the properties of the WIM file, enable compression.
- C. Run Dism.exe and specify the /cleanup-wim parameter.
- D. Right-click the WIM file, point to Send To and then click Compressed (zipped) Folder.

Correct Answer: A

#### ImageX

ImageX is a command-line tool that enables original equipment manufacturers (OEMs) and corporations to capture, to modify, and to apply file-based disk images for rapid deployment. ImageX works with Windows image (.wim) files for

copying to a network, or it can work with other technologies that use .wim images, such as Windows Setup, Windows Deployment Services (Windows DS), and the System Management Server (SMS) Operating System Feature Deployment

Pack.

`/split image_filedest_filesize`

Splits an existing .wim file into multiple read-only split .wim files (.swm).

image\_file

Specifies the name and location of the .wim file to split.

dest\_file

Specifies the file path of the split files.

Size

Specifies the maximum size in megabytes (MB) for each created file.

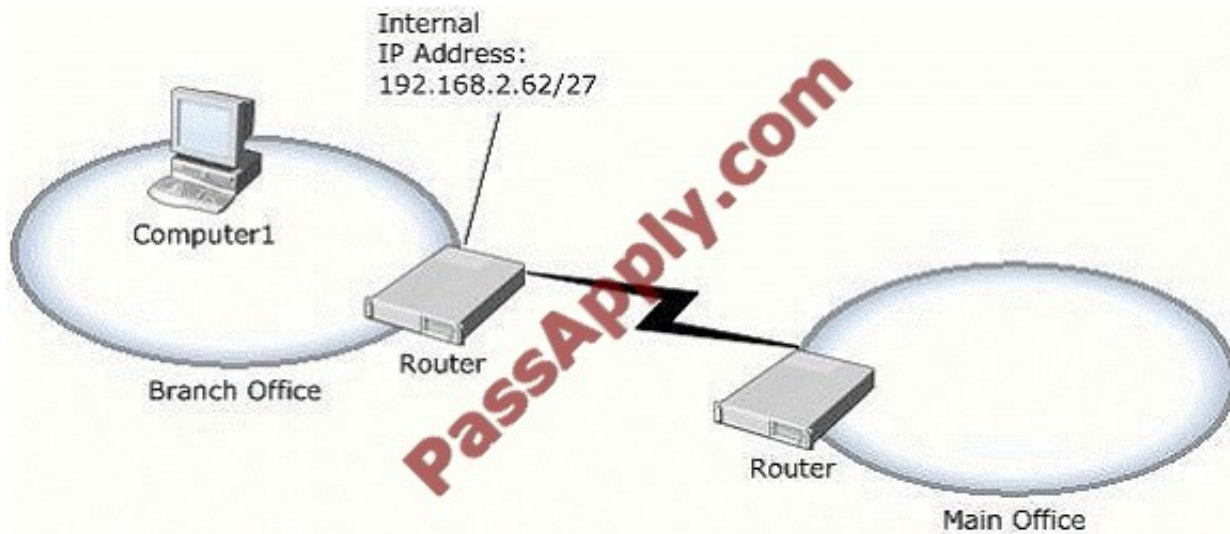
This option generates the .swm files into the specified directory, naming each file the same as the specified image\_file, but with an appended number and the .swm file-name extension. For example, if you choose to split a file named

Data.wim, this option creates a Data.swm file, a Data2.swm file, a Data3.swm file, and so on, defining each portion of the split .wim file.

---

#### QUESTION 4

Your company has a main office and a branch office. The relevant portion of the network is configured as shown in the exhibit. (Click the Exhibit button.)



In the branch office, you deploy a new computer named Computer1 that runs Windows 7.

You need to assign an IP address to Computer1.

Which IP address should you use?

- A. 192.168.2.30
- B. 192.168.2.40
- C. 192.168.2.63
- D. 192.168.2.65

Correct Answer: B

Internal IP Address of router is 192.168.2.62/27 Leaves 5 bits for range = 32 addresses (including the 2 reserved addresses) Subnet Mask = 255.255.255.224



```
Address: 192.168.2.62      11000000.10101000.00000010.001 11110
Netmask: 255.255.255.224 = 27 11111111.11111111.11111111.111 00000
Wildcard: 0.0.0.31        00000000.00000000.00000000.000 11111
Network: 192.168.2.32/27  11000000.10101000.00000010.001 00000
```

```
Network Address      : 192.168.2.32 (reserved)
Address of First Host : 192.168.2.33
Address of Last Host  : 192.168.2.62
Broadcast Address     : 192.168.2.63 (reserved)
```

Acceptable IP range: 192.168.2.33 - 192.168.2.62

Therefore

192.168.2.30: is out of range (in the wrong subnet, not subnet 2).  
192.168.2.40: is acceptable (in correct subnet, and not reserved).  
192.168.2.63: is reserved for Broadcast (in subnet, but reserved).  
192.168.2.65: is out of range (in the wrong subnet, not subnet 2).

Acceptable IP ranges for those interested (excluding the 2 reserved IP addresses):

```
Segment 1: 192.168.2.1   - 192.168.2.30
Segment 2: 192.168.2.33  - 192.168.2.62
Segment 3: 192.168.2.65  - 192.168.2.94
Segment 4: 192.168.2.97  - 192.168.2.126
Segment 5: 192.168.2.129 - 192.168.2.158
Segment 6: 192.168.2.161 - 192.168.2.190
Segment 7: 192.168.2.193 - 192.168.2.222
Segment 8: 192.168.2.225 - 192.168.2.254
```

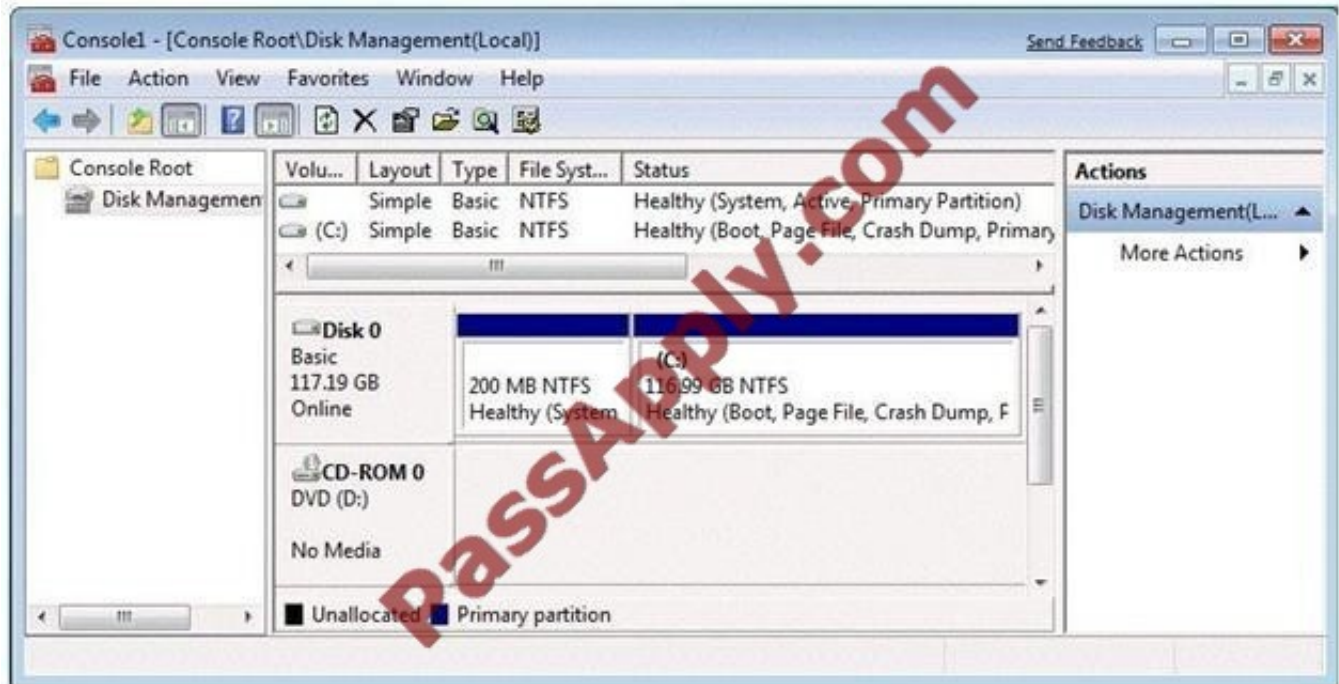
Segments for those interested (including the 2 reserved IP addresses):

```
Segment 1: 192.168.2.0   - 192.168.2.31
Segment 2: 192.168.2.32  - 192.168.2.63
Segment 3: 192.168.2.64  - 192.168.2.95
Segment 4: 192.168.2.96  - 192.168.2.127
Segment 5: 192.168.2.128 - 192.168.2.159
Segment 6: 192.168.2.160 - 192.168.2.191
Segment 7: 192.168.2.192 - 192.168.2.223
Segment 8: 192.168.2.224 - 192.168.2.255
```

## QUESTION 5

You have a computer that runs Windows 7. You open the Disk Management snap-in as shown in the exhibit. (Click the Exhibit button.)?





You need to ensure that you can create a new partition on Disk 0. What should you do?

- A. Shrink volume C.
- B. Compress volume C.
- C. Convert Disk 0 into a dynamic disk.
- D. Create and initialize a Virtual Hard Disk (VHD).

Correct Answer: A

Needs to have sufficient space in order to create a new partition. Hence shrinking the C: partition will create additional space that can be used for a new partition.

[70-680 PDF Dumps](#)

[70-680 Study Guide](#)

[70-680 Braindumps](#)



VCE & PDF

PassApply.com

<https://www.passapply.com/70-680.html>

2021 Latest passapply 70-680 PDF and VCE dumps Download

To Read the [Whole Q&As](#), please purchase the [Complete Version](#) from [Our website](#).

## Try our product !

100% Guaranteed Success

100% Money Back Guarantee

365 Days Free Update

Instant Download After Purchase

24x7 Customer Support

Average 99.9% Success Rate

More than 800,000 Satisfied Customers Worldwide

Multi-Platform capabilities - [Windows](#), [Mac](#), [Android](#), [iPhone](#), [iPod](#), [iPad](#), [Kindle](#)

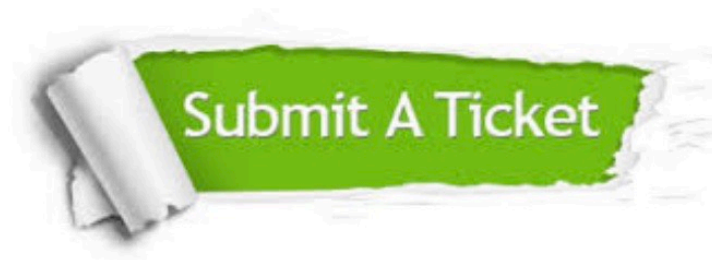
We provide exam PDF and VCE of Cisco, Microsoft, IBM, CompTIA, Oracle and other IT Certifications. You can view Vendor list of All Certification Exams offered:

<https://www.passapply.com/allproducts>

## Need Help

Please provide as much detail as possible so we can best assist you.

To update a previously submitted ticket:



 <b>One Year Free Update</b> <p>Free update is available within One Year after your purchase. After One Year, you will get 50% discounts for updating. And we are proud to boast a 24/7 efficient Customer Support system via Email.</p>	 <b>Money Back Guarantee</b> <p>To ensure that you are spending on quality products, we provide 100% money back guarantee for 30 days from the date of purchase.</p>	 <b>Security &amp; Privacy</b> <p>We respect customer privacy. We use McAfee's security service to provide you with utmost security for your personal information &amp; peace of mind.</p>
---	---	--

Any charges made through this site will appear as Global Simulators Limited.

All trademarks are the property of their respective owners.

Copyright © passapply, All Rights Reserved.