



## 70-649<sup>Q&As</sup>

TS: Upgrading Your MCSE on Windows Server 2003 to Windows Server 2008, Technology Specialist

### Pass Microsoft 70-649 Exam with 100% Guarantee

Free Download Real Questions & Answers **PDF** and **VCE** file from:

<https://www.passapply.com/70-649.html>

100% Passing Guarantee  
100% Money Back Assurance

Following Questions and Answers are all new published by Microsoft Official Exam Center

- ⚙ **Instant Download** After Purchase
- ⚙ **100% Money Back** Guarantee
- ⚙ **365 Days** Free Update
- ⚙ **800,000+** Satisfied Customers





## QUESTION 1

Your network contains an Active Directory domain. The domain contains several domain controllers. You need to modify the Password Replication Policy on a read-only domain controller (RODC). Which tool should you use?

- A. Computer Management
- B. Active Directory Users and Computers
- C. Group Policy Management
- D. Security Configuration Wizard
- E. Active Directory Domains and Trusts

Correct Answer: B

Reference:

<http://technet.microsoft.com/en-us/library/rodc-guidance-for-administering-the-password-replication-policy.aspx>

### Administering the Password Replication Policy

This topic describes the steps for viewing, configuring, and monitoring the Password Replication Policy (PRP) and password caching for read-only domain controllers (RODCs).

To configure the PRP using Active Directory Users and Computers:

1.  
Open Active Directory Users and Computers as a member of the Domain Admins group.
2.  
Ensure that you are connected to a writeable domain controller running Windows Server 2008 in the correct domain.
3.  
Click Domain Controllers, and in the details pane, right-click the RODC computer account, and then click Properties.
4.  
Click the Password Replication Policy tab.
- 5.

The Password Replication Policy tab lists the accounts that, by default, are defined in the Allowed list and the Deny list on the RODC. To add other groups that should be included in either the Allowed list or the Deny list, click Add.

To add other accounts that will have credentials cached on the RODC, click Allow passwords for the account to replicate to this RODC.

To add other accounts that are not allowed to have credentials cached on the RODC, click Deny passwords for the account from replicating to this RODC.



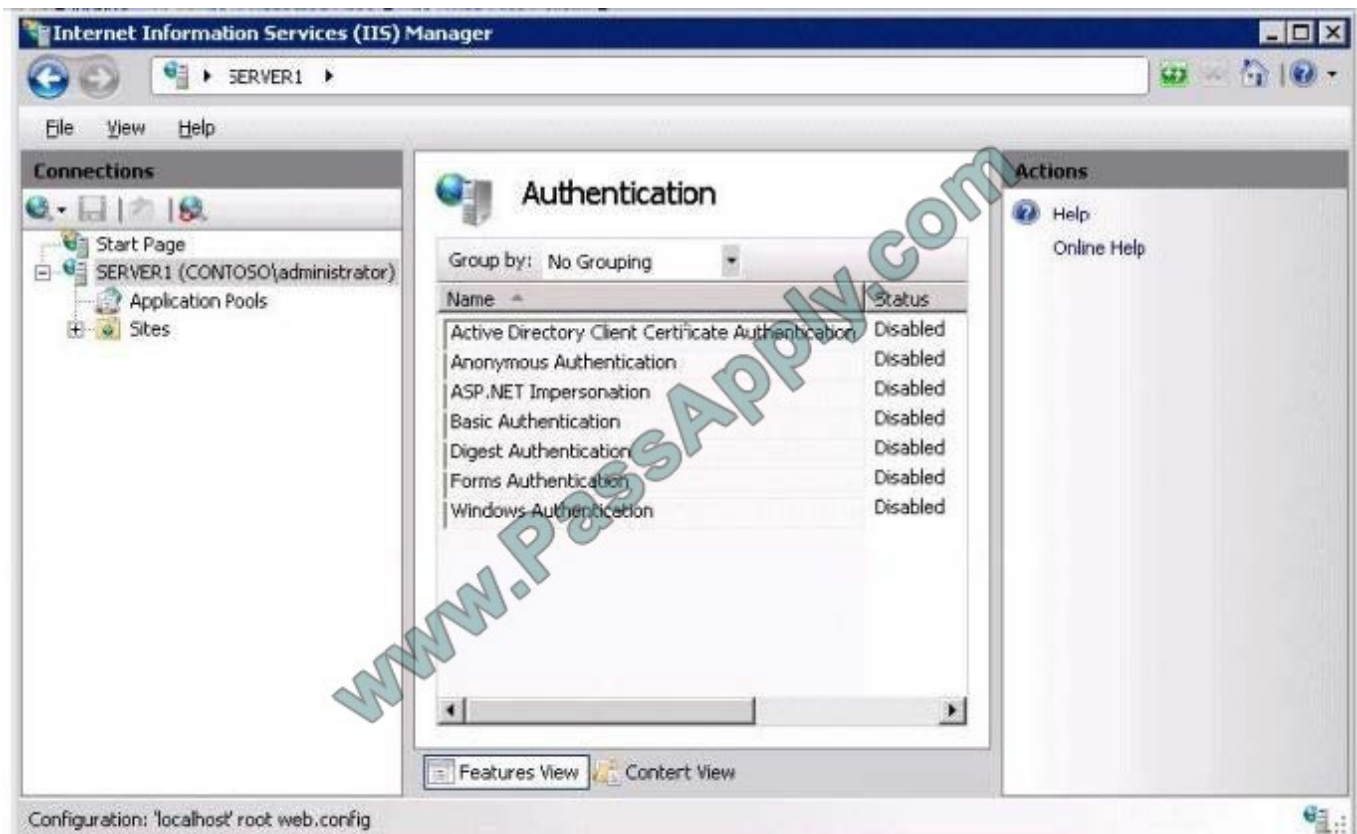
## QUESTION 2

Your network contains a web server named Server1.

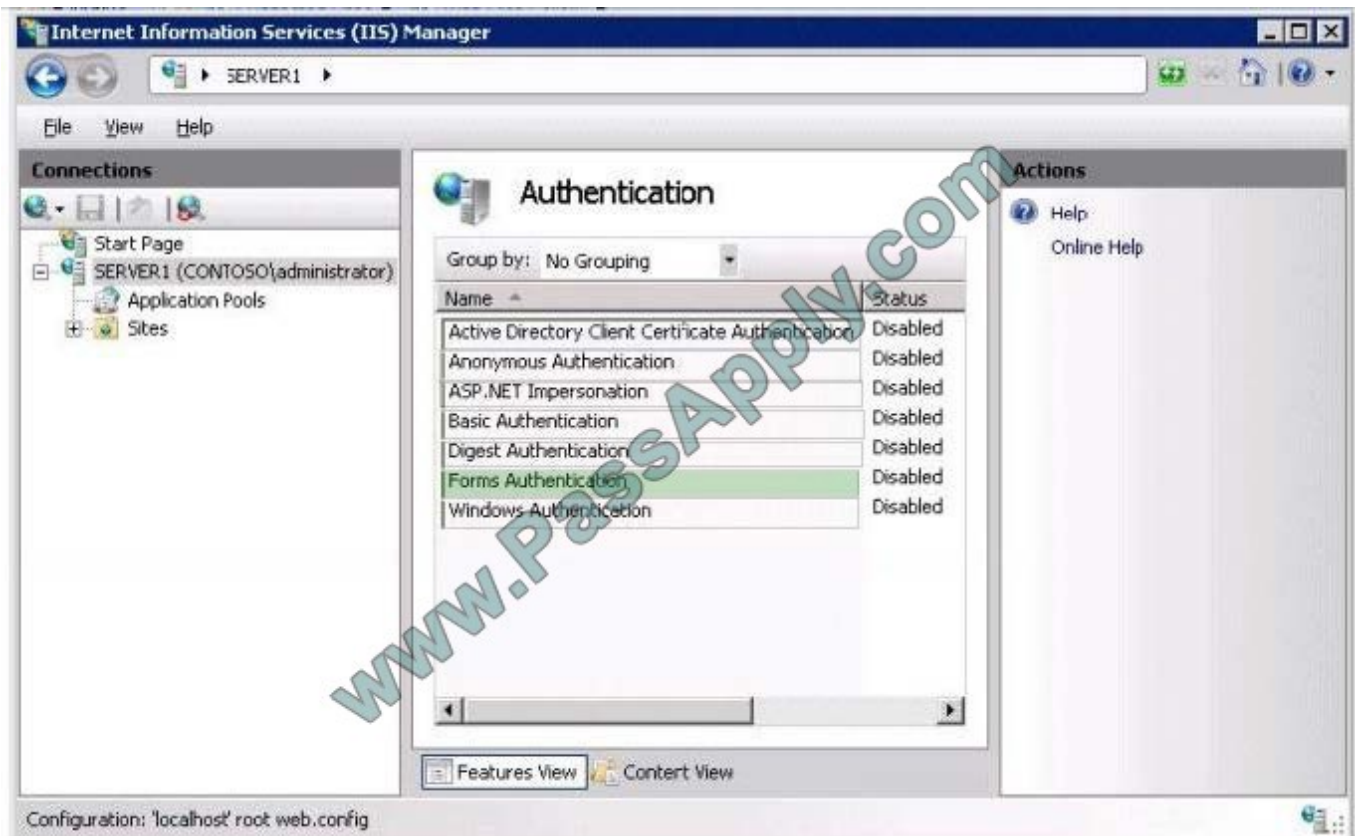
You need to ensure that Server1 authenticates users by using a custom web page.

Which authentication method should you enable from Internet Information Services (IIS) Manager?

To answer, select the appropriate authentication method in the answer area.



Correct Answer:



### QUESTION 3

You deploy Network Access Protection (NAP) on your network.

An administrator configures a network policy as shown in the exhibit. (Click the Exhibit button.)



**NonCompliant-Restricted Access Properties**

Overview | Conditions | Constraints | Settings

Policy name:

**Policy State**  
If enabled, NPS evaluates this policy while performing authorization. If disabled, NPS does not evaluate this policy.

☒ Policy enabled

**Access Permission**  
If conditions and constraints of the network policy match the connection request, the policy can either grant access or deny access. [What is access permission?](#)

☐ Grant access. Grant access if the connection request matches this policy.

☒ Deny access. Deny access if the connection request matches this policy.

☐ Ignore user account dial-in properties.  
If the connection request matches the conditions and constraints of this network policy and the policy grants access, perform authorization with network policy only; do not evaluate the dial-in properties of user accounts.

**Network connection method**  
Select the type of network access server that sends the connection request to NPS. You can select either the network access server type or Vendor specific, but neither is required. If your network access server is an 802.1X authenticating switch or wireless access point, select Unspecified.

☐ Type of network access server:

☒ Vendor specific:

OK Cancel Apply

You discover that noncompliant client computers cannot access the remediation network.

You need to configure the network policy to ensure that noncompliant client computers can access the remediation network. What should you do?

- A. In the Type of network access server list, click HCAP Server.
- B. In the Type of network access server list, click Health Registration Authority.
- C. In Access Permission, select the Ignore user account dial-in properties check box.
- D. In Access Permission, select the Grant access. Grant access if the connection request matches this policy option button.

Correct Answer: D

#### QUESTION 4

You manage a member server that runs Windows Server 2008 R2. The server runs the Remote Desktop Gateway (RD



Gateway) role service.

You need to gather information about active users that are currently connected through the RD Gateway server. The information must include the Connection ID, User ID, User Name, Idle Time, and Client IP Address.

What should you do?

- A. View the events in the Monitoring folder from the RD Gateway Manager console.
- B. View the Event Viewer Security log.
- C. View the Event Viewer Application log.
- D. View the Event Viewer Terminal Services-Gateway log.

Correct Answer: D

By using TS Gateway Manager, you can specify the types of events that you want to monitor, such as unsuccessful or successful connection attempts to internal network computers through a TS Gateway server. When these events occur, you can monitor the corresponding events by using Windows Event Viewer. TS Gateway server events are stored in Event Viewer under Application and Services Logs\Microsoft\Windows\Terminal Services-Gateway\.

Source: [http://technet.microsoft.com/en-us/library/cc730618\(WS.10\).aspx](http://technet.microsoft.com/en-us/library/cc730618(WS.10).aspx)

---

## QUESTION 5

Your network has Network Access Protection (NAP) deployed. The network contains two servers named Server1 and Server2. Server1 is Network Policy Server (NPS). Server2 has a third-party antivirus solution installed.

Server1 is configured to use a custom system health validator provided by the antivirus vendor. The system health validator uses Server to identify the version of the current antivirus definition.

You need to ensure that NAP clients are considered noncompliant if Server1 cannot connect to Server2.

Which error code resolution setting should you configure?

- A. SHA not responding to NAP client
- B. SHV not responding
- C. SHV unable to contact required services
- D. SHA unable to contact required services

Correct Answer: C

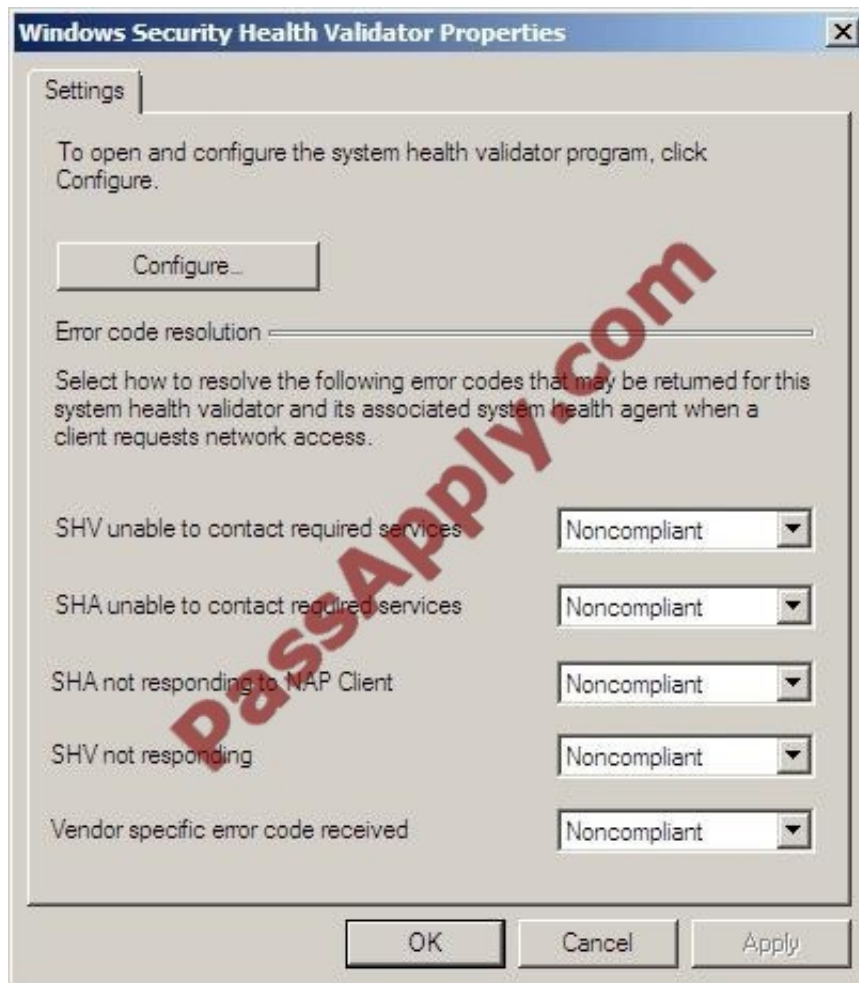
System health validators (SHVs) define configuration requirements for NAP client computers. Windows Security Health Validator (WSHV) is included with Windows Server 2008 and Windows Server 2008 R2.

SHV error codes:

All SHVs include five error code conditions. If an error code is returned to the SHV, you can choose to have the SHV evaluate the client as either compliant or noncompliant. The following figure describes Windows Security Health Validator

Properties dialog box in Windows Server 2008.





Windows Security Health Validator Properties dialog box The following is a description of the available error codes:

SHV unable to contact required services. This error can occur if NPS loses connectivity to a health requirement server, such as an antivirus signature server. SHA unable to contact required services. This error can occur if the SHA is unable

to successfully read the client configuration.

SHA not responding to NAP Client. This error can occur if a SHA is not properly initialized and registered.

SHV not responding. This error can occur if the performance of an SHV is degraded (for example, if NPS is out of memory).

Vendor specific error code received. This error can occur if NPS receives an error code that is unique to the SHA or SHV vendor. Some vendors might return this code when NPS is unable to contact a health requirement server.

[Latest 70-649 Dumps](#)

[70-649 Practice Test](#)

[70-649 Exam Questions](#)



VCE & PDF

PassApply.com

<https://www.passapply.com/70-649.html>

2021 Latest passapply 70-649 PDF and VCE dumps Download

To Read the [Whole Q&As](#), please purchase the [Complete Version](#) from [Our website](#).

## Try our product !

100% Guaranteed Success

100% Money Back Guarantee

365 Days Free Update

Instant Download After Purchase

24x7 Customer Support

Average 99.9% Success Rate

More than 800,000 Satisfied Customers Worldwide

Multi-Platform capabilities - [Windows](#), [Mac](#), [Android](#), [iPhone](#), [iPod](#), [iPad](#), [Kindle](#)

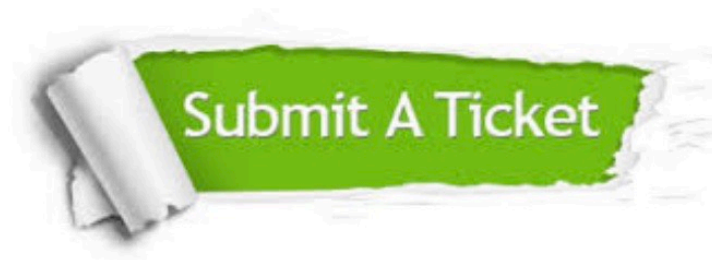
We provide exam PDF and VCE of Cisco, Microsoft, IBM, CompTIA, Oracle and other IT Certifications.  
You can view Vendor list of All Certification Exams offered:

<https://www.passapply.com/allproducts>

## Need Help

Please provide as much detail as possible so we can best assist you.

To update a previously submitted ticket:



 <b>One Year Free Update</b> Free update is available within One Year after your purchase. After One Year, you will get 50% discounts for updating. And we are proud to boast a 24/7 efficient Customer Support system via Email.	 <b>Money Back Guarantee</b> To ensure that you are spending on quality products, we provide 100% money back guarantee for 30 days from the date of purchase.	 <b>Security &amp; Privacy</b> We respect customer privacy. We use McAfee's security service to provide you with utmost security for your personal information & peace of mind.
---	---	--

Any charges made through this site will appear as Global Simulators Limited.

All trademarks are the property of their respective owners.

Copyright © passapply, All Rights Reserved.