



70-497^{Q&As}

Software Testing with Visual Studio

Pass Microsoft 70-497 Exam with 100% Guarantee

Free Download Real Questions & Answers **PDF** and **VCE** file from:

<https://www.passapply.com/70-497.html>

100% Passing Guarantee
100% Money Back Assurance

Following Questions and Answers are all new published by Microsoft
Official Exam Center

-  **Instant Download** After Purchase
-  **100% Money Back** Guarantee
-  **365 Days** Free Update
-  **800,000+** Satisfied Customers





QUESTION 1

You are a development operations engineer. You are a member of the development team and are working on Project A. You are in the middle of a Sprint 5.

The developers assign work items that instruct you to make changes to config files for web services. The development team needs to add a new functionality to the web services during the sprint.

You need to query the work items assigned to you that are related to the new functionality.

Which filters should you configure in order to build a flat list of work items? To answer, configure the appropriate options in the dialog box in the answer area.

Answer Area

Type of query: Flat list of work items Work items and direct links Tree of work items

Filters for top level work items

	And/Or	Field	Operator	Value
<input type="checkbox"/> <input checked="" type="checkbox"/> <input type="checkbox"/>		Team Project	=	@Project
<input type="checkbox"/> <input checked="" type="checkbox"/> <input type="checkbox"/>	And	Assigned To		@Me
<input type="checkbox"/> <input checked="" type="checkbox"/> <input type="checkbox"/>	And	Work Item Type		[Any]
<input type="checkbox"/> <input checked="" type="checkbox"/> <input type="checkbox"/>	And	Iteration Path		
<input type="checkbox"/> <input checked="" type="checkbox"/> <input type="checkbox"/>	And	Description		config
<input type="button" value="Add new clause"/>				

Hot Area:



Answer Area

type of query Flat list of work items Work items and direct links Tree of work items

Filters for top level work items

	And/Or	Field	Operator	Value
<input type="checkbox"/>		Team Project	=	@Project
<input type="checkbox"/>	And	Assigned To	Contains Words	@Me
			Does Not Contain Words	[Any]
			=	
			<=	
			>=	
<input type="checkbox"/>	And	Work Item Type	Contains Words	Project A Sprint 5
			Does Not Contain Words	Sprint 5 Project A
			=	Sprint 5
			<=	
			>=	
<input type="checkbox"/>	And	Iteration Path	Contains Words	
			Does Not Contain Words	
			=	
			<=	
			>=	
<input type="checkbox"/>	And	Descriptor	Contains Words	
			Does Not Contain Words	
			=	
			<=	
			>=	

Add new clause

Correct Answer:



Answer Area

Reference: Query for work items Reference: Query fields, operators, values, and variables

QUESTION 2

Your team uses the Microsoft Visual Studio Scrum 2013 process template in Microsoft Test Manager.

Your team wants to link all test cases to the related product backlog item or bug that they test.

You have a test case ID 121 and a product backlog item with ID 79.

What should you do?

- A. Open the test case, and add a Parent link to product backlog item #79.
- B. Open the product backlog item, and add a Related link to test case #121.
- C. Open the product backlog item, and add a Child link to test case #121.
- D. Open the test case, and add a Tests link to product backlog item #79.

Correct Answer: A

Reference: Product Backlog Item (Scrum)



QUESTION 3

You are using Microsoft Test Manager (MTM) to track bugs that have been found during testing.

You need to verify a bug by re-running the test case associated with the bug.

Which actions should you perform? (To answer, move the five appropriate actions from the list of actions to the answer area and arrange them in the correct order.)

Select and Place:

	Answer Area
Select the Assigned Bugs activity.	
Click Run test .	
Select the bug with an associated test result.	
Select the Verify Bug Tests view.	
Navigate to the Testing Center.	
Select the Verify Bugs view.	
Select the Test activity.	
Click Verify .	

Correct Answer:

	Answer Area
Select the Assigned Bugs activity.	Navigate to the Testing Center.
Click Run test .	Select the Test activity.
	Select the Verify Bugs view.
Select the Verify Bug Tests view.	Select the bug with an associated test result.
	Click Verify .

Note:

To verify that a bug is fixed

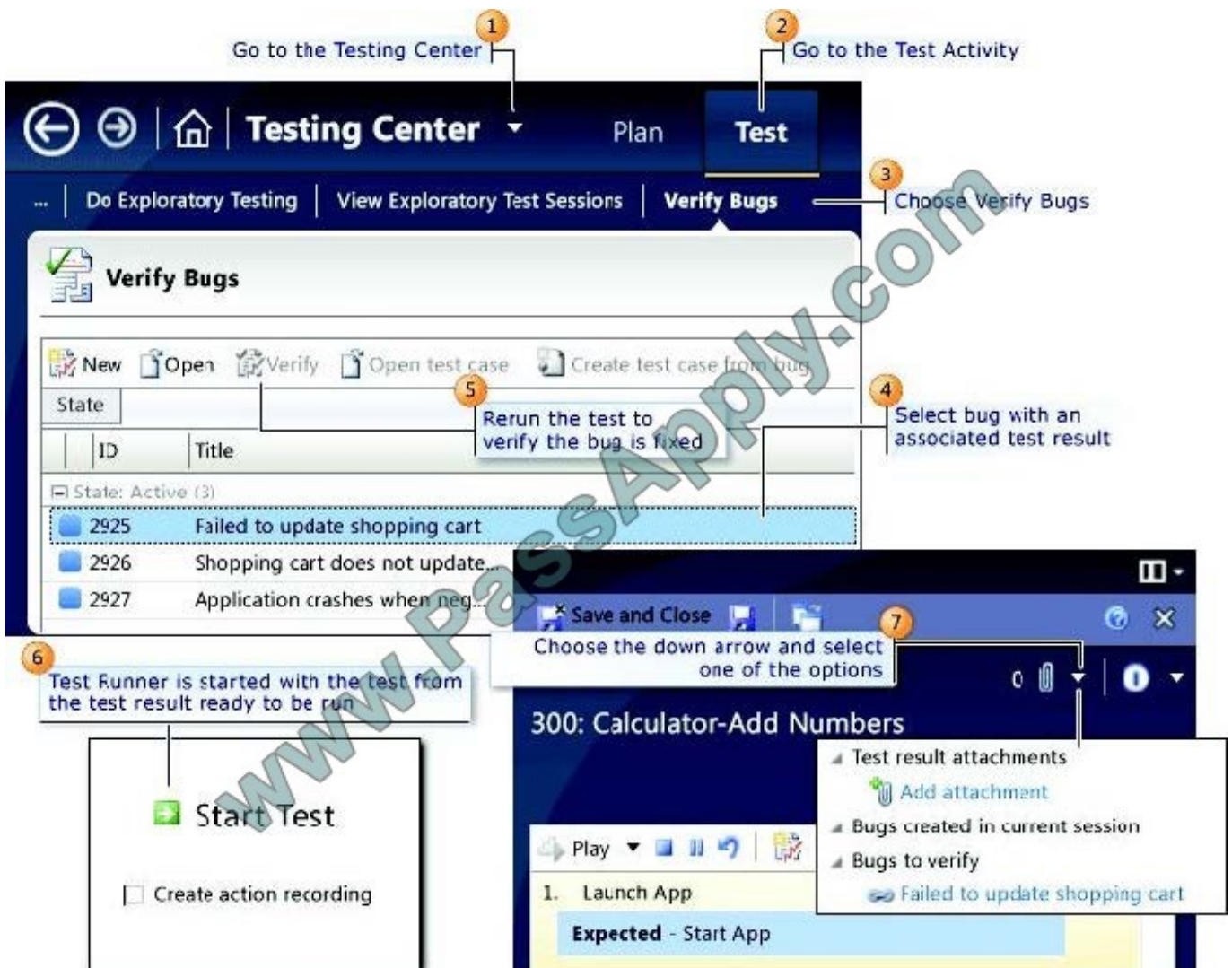


1. Open Microsoft Test Manager.
2. To run the test, choose the down-arrow on the center group switcher and then choose Testing Center.
3. On the center group menu bar, choose Test.
4. To view the bugs assigned to you, choose Verify Bugs.

The Verify Bugs view is displayed. It lists all the bugs that are currently assigned to you.

5. (Optional) To view the bugs that you created, choose Created by me.
6. Select the bug that you want to verify, and then choose Verify.

Finally choose Start test to rerun this test.



Reference: How to: Verify a Bug is Fixed Using Microsoft Test Manager

QUESTION 4



You are using Microsoft Test Manager (MTM).

Your company has configured multiple test configurations.

You need to set all active test configurations as the default for all new test plans.

What should you do?

- A. Select the Active state option for each test configuration.
- B. Select the Default option for each test configuration.
- C. Select multiple test configurations from the test plan.
- D. Select the Assign to new test plans option for each test configuration.

Correct Answer: D

If you want to assign a configuration to be used as a default configuration for new test plans that you create, then select Assign to new test plans. Reference: How to: Create Test Configurations

QUESTION 5

You are using Microsoft Test Manager (MTM).

You plan to organize the Priority 1 test cases into a test suite.

You need to create a test suite only for Priority 1 test cases.

Which type of test suite should you create?

- A. query-based
- B. priority-based
- C. exploratory
- D. requirements-based

Correct Answer: A

You might want to search for all the test cases in your team project using Microsoft Test Manager, or you might want to search for only specific test cases. You can customize a query to search for only the test cases you want to see. For

example, you can create a query to search for just the priority 1 test cases you own.

You can save this query to use later.

Reference: How to: Search for Test Cases from Microsoft Test Manager



To Read the [Whole Q&As](#), please purchase the [Complete Version](#) from [Our website](#).

Try our product !

100% Guaranteed Success
100% Money Back Guarantee
365 Days Free Update
Instant Download After Purchase
24x7 Customer Support
Average 99.9% Success Rate
More than 800,000 Satisfied Customers Worldwide
Multi-Platform capabilities - [Windows](#), [Mac](#), [Android](#), [iPhone](#), [iPod](#), [iPad](#), [Kindle](#)

We provide exam PDF and VCE of Cisco, Microsoft, IBM, CompTIA, Oracle and other IT Certifications.
You can view Vendor list of All Certification Exams offered:

<https://www.passapply.com/allproducts>

Need Help

Please provide as much detail as possible so we can best assist you.
To update a previously submitted ticket:



 <p>One Year Free Update Free update is available within One Year after your purchase. After One Year, you will get 50% discounts for updating. And we are proud to boast a 24/7 efficient Customer Support system via Email.</p>	 <p>Money Back Guarantee To ensure that you are spending on quality products, we provide 100% money back guarantee for 30 days from the date of purchase.</p>	 <p>Security & Privacy We respect customer privacy. We use McAfee's security service to provide you with utmost security for your personal information & peace of mind.</p>
---	---	--

Any charges made through this site will appear as Global Simulators Limited.
All trademarks are the property of their respective owners.
Copyright © passapply, All Rights Reserved.