



# 70-497<sup>Q&As</sup>

Software Testing with Visual Studio

## Pass Microsoft 70-497 Exam with 100% Guarantee

Free Download Real Questions & Answers **PDF** and **VCE** file from:

<https://www.passapply.com/70-497.html>

100% Passing Guarantee  
100% Money Back Assurance

Following Questions and Answers are all new published by Microsoft  
Official Exam Center

- ⚙ **Instant Download** After Purchase
- ⚙ **100% Money Back** Guarantee
- ⚙ **365 Days** Free Update
- ⚙ **800,000+** Satisfied Customers





### QUESTION 1

You are using Microsoft Test Manager (MTM) to track bugs that have been found during testing.

You need to verify a bug by re-running the test case associated with the bug.

Which actions should you perform? (To answer, move the five appropriate actions from the list of actions to the answer area and arrange them in the correct order.)

Select and Place:

	Answer Area
Select the <b>Assigned Bugs</b> activity.	
Click <b>Run test</b> .	
Select the bug with an associated test result.	
Select the <b>Verify Bug Tests</b> view.	
Navigate to the Testing Center.	
Select the <b>Verify Bugs</b> view.	
Select the <b>Test</b> activity.	
Click <b>Verify</b> .	

Correct Answer:

	Answer Area
Select the <b>Assigned Bugs</b> activity.	Navigate to the Testing Center.
Click <b>Run test</b> .	Select the <b>Test</b> activity.
	Select the <b>Verify Bugs</b> view.
Select the <b>Verify Bug Tests</b> view.	Select the bug with an associated test result.
	Click <b>Verify</b> .

Note:

To verify that a bug is fixed



1. Open Microsoft Test Manager.
2. To run the test, choose the down-arrow on the center group switcher and then choose Testing Center.
3. On the center group menu bar, choose Test.
4. To view the bugs assigned to you, choose Verify Bugs.

The Verify Bugs view is displayed. It lists all the bugs that are currently assigned to you.

5. (Optional) To view the bugs that you created, choose Created by me.
6. Select the bug that you want to verify, and then choose Verify.

Finally choose Start test to rerun this test.

The screenshot shows the Microsoft Test Manager interface. The top navigation bar includes 'Testing Center', 'Plan', and 'Test'. The 'Testing Center' dropdown menu is open, showing 'Do Exploratory Testing', 'View Exploratory Test Sessions', and 'Verify Bugs'. The 'Verify Bugs' view is active, displaying a table of bugs. The table has columns for 'ID' and 'Title'. The first bug is '2925 Failed to update shopping cart'. The 'Verify' button is highlighted. The 'Test Runner' is started with the test from the test result ready to be run. The 'Start Test' button is visible. The 'Expected - Start App' test step is shown. The 'Test result attachments' section is visible, showing 'Add attachment', 'Bugs created in current session', and 'Bugs to verify'.

Annotations:

- 1. Go to the Testing Center
- 2. Go to the Test Activity
- 3. Choose Verify Bugs
- 4. Select bug with an associated test result
- 5. Rerun the test to verify the bug is fixed
- 6. Test Runner is started with the test from the test result ready to be run
- 7. Choose the down arrow and select one of the options

Reference: How to: Verify a Bug is Fixed Using Microsoft Test Manager

## QUESTION 2



You are using Microsoft Test Manager (MTM) to perform exploratory testing.

You need to insert an image into the comment area for the test run.

What are two possible ways to accomplish this goal? (Each correct answer presents a complete solution. Choose two.)

A. Use the Add screenshot tool in the exploratory test runner and drag the selection box over the area of the screen you want to capture.

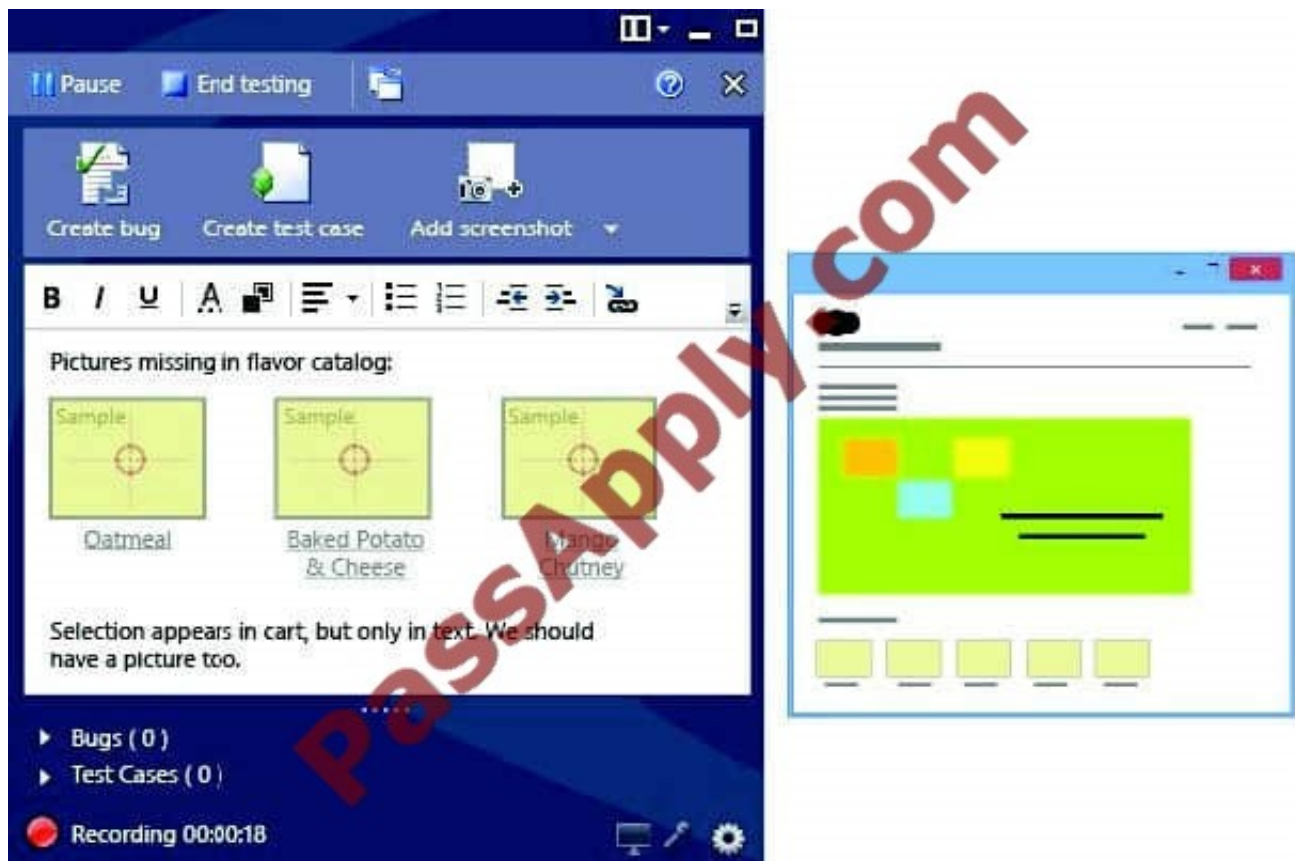
B. Capture the image you want to insert by using your favorite screen capture utility and paste the image into the comment area of the exploratory testing window.

C. Capture the image you want to insert by using your favorite screen capture utility and save the file to disk. Add the image as an attachment to the test run.

D. Capture the image you want to insert by using your favorite screen capture utility. Drag and drop the file onto the comment area from the Windows Explorer.

Correct Answer: AC

A: While you work with the application, add comments and screenshots in the Test Runner window.



C: \* Microsoft Test Manager (MTM) helps you by recording the actions you perform as you work with your application. You can also record screenshots, comments, file attachments, audio narration and screen video.

### QUESTION 3





Your team uses Microsoft Test Manager to manage test cases. You are testing an ASP.NET MVC web application hosted on one of your internal servers, which is named WebSrv1. Your

application connects to a SQL Server database hosted on a server named DBSrv1.

You want to configure your test plan so that it collects diagnostic data from your test machine and all servers used by your application.

Which four actions should you perform in sequence? To answer, move the appropriate actions from the list of actions to the answer area and arrange them in the correct order.

Select and Place:

Actions	Answer Area
Under the Roles tab of your Settings dialog, select Local, Web Server, and Database Server.	
In the Properties of your test plan, select the <New...> option under Test settings.	
Under the Roles tab of your Settings dialog box, select Web Server and Database Server.	
Create a Lab Environment with a machine role configured for your web server and database server.	
Create a Lab Environment with a machine role configured for your local test machine, the web server, and the database server.	
Under the Data and Diagnostics tab of your Settings dialog, select the data that you want to collect for each role.	

Correct Answer:



Actions	Answer Area
Under the Roles tab of your Settings dialog, select Local, Web Server, and Database Server.	Create a Lab Environment with a machine role configured for your local test machine, the web server, and the database server.
Under the Roles tab of your Settings dialog box, select Web Server and Database Server.	In the Properties of your test plan, select the <New...> option under Test settings.
	Create a Lab Environment with a machine role configured for your web server and database server.
	Under the Data and Diagnostics tab of your Settings dialog, select the data that you want to collect for each role.

Step 1- Step 2:

1. If the application you are testing is a website or has a server component, and you want to collect data from the servers:

- a) Create a lab environment. It can be a standard environment or an SCVMM environment.
- b) In the Properties of your test plan, set the test environment you want to use for manual tests.

Step 2:

- 1. Choose an existing test settings file, or create a new one.
- 2. Give the test settings file a name.

Step 3:

- 3. Choose the lab environment you want to use for your tests.



Select the set of roles that you want to use:

Sets of roles	Matching environments
Local	<Local machine or remote device where manual tests are run>
Web Server	Single server



Set of roles: Web Server



Step 4:

4. For each machine role, choose the data you want to collect from that machine.

Roles:



Role: Web Server

☐ **ASP.NET Client Proxy for IntelliTrace and Test Impact**  
Use for Web applications when you select IntelliTrace or Test Impact for a server role (use for any role that is a client to a Web server). Configure

☐ **Code Coverage**  
Use to collect code coverage data for ASP.NET applications running on IIS. Choose 'Configure' to provide location of symbol files. Configure

☐ **Event Log**  
Use to capture event log data (for client or server roles). Configure

☐ **IntelliTrace**  
Use to collect exceptions and specific diagnostic tracing information to help isolate bugs that are difficult to reproduce (for client or server roles). Configure

< Previous Next > Finish Cancel



Reference: Collect more diagnostic data in manual tests

#### QUESTION 4

You are using Microsoft Test Manager to view user stories and tasks in a new team project.

You are building a new query that must return both work item types in a single result set.

The default clause Team Project = @Project is already specified. You need to complete the query.

What should you do? (To answer, move the three appropriate actions from the list of actions to the answer area and arrange them in the correct order.)

Select and Place:

Add the clause <b>And Work Item Type = User Story.</b>	
Ungroup the added clauses.	
Add the clause <b>Or Work Item Type = Task.</b>	
Add the clause <b>And State = User Story.</b>	
Group the added clauses.	
Group the added clauses and the default Team Project clause.	
Add the clause <b>And Work Item Category = Task.</b>	

Correct Answer:

	Add the clause <b>And Work Item Type = User Story.</b>
Ungroup the added clauses.	Add the clause <b>Or Work Item Type = Task.</b>
	Group the added clauses.
Add the clause <b>And State = User Story.</b>	
Group the added clauses and the default Team Project clause.	
Add the clause <b>And Work Item Category = Task.</b>	

#### QUESTION 5





You are the QA lead for a development team. You use the Agile process template. Your testers use Microsoft Test Manager to author and run manual test cases.

The testers use requirement- based test suites to organize the test cases and link them to user stories.

You need to obtain testing status information, such as the number of tests that are passed, failed, or active. You need this information broken down by user story.

Which SQL Server Reporting Services report should you view?

- A. Stories Overview
- B. Stories Progress
- C. Test Case Readiness
- D. Test Plan Progress

Correct Answer: A

The Stories Overview report lists all user stories, filtered by area and iteration and in order of importance.

You can use this report to answer the following questions:

How much work does each story require?

How much work has the team completed for each story?

Are the tests for each story passing?

How many active bugs does each story have?

Reference: Stories Overview Report (Agile)

[70-497 VCE Dumps](#)

[70-497 Study Guide](#)

[70-497 Exam Questions](#)



To Read the [Whole Q&As](#), please purchase the [Complete Version](#) from [Our website](#).

## Try our product !

100% Guaranteed Success

100% Money Back Guarantee

365 Days Free Update

Instant Download After Purchase

24x7 Customer Support

Average 99.9% Success Rate

More than 800,000 Satisfied Customers Worldwide

Multi-Platform capabilities - [Windows](#), [Mac](#), [Android](#), [iPhone](#), [iPod](#), [iPad](#), [Kindle](#)

We provide exam PDF and VCE of Cisco, Microsoft, IBM, CompTIA, Oracle and other IT Certifications.  
You can view Vendor list of All Certification Exams offered:

<https://www.passapply.com/allproducts>

## Need Help

Please provide as much detail as possible so we can best assist you.

To update a previously submitted ticket:



 <b>One Year Free Update</b> Free update is available within One Year after your purchase. After One Year, you will get 50% discounts for updating. And we are proud to boast a 24/7 efficient Customer Support system via Email.	 <b>Money Back Guarantee</b> To ensure that you are spending on quality products, we provide 100% money back guarantee for 30 days from the date of purchase.	 <b>Security &amp; Privacy</b> We respect customer privacy. We use McAfee's security service to provide you with utmost security for your personal information & peace of mind.
---	---	--

Any charges made through this site will appear as Global Simulators Limited.

All trademarks are the property of their respective owners.

Copyright © passapply, All Rights Reserved.