



# 70-497<sup>Q&As</sup>

Software Testing with Visual Studio

## Pass Microsoft 70-497 Exam with 100% Guarantee

Free Download Real Questions & Answers **PDF** and **VCE** file from:

<https://www.passapply.com/70-497.html>

100% Passing Guarantee  
100% Money Back Assurance

Following Questions and Answers are all new published by Microsoft  
Official Exam Center

-  **Instant Download** After Purchase
-  **100% Money Back** Guarantee
-  **365 Days** Free Update
-  **800,000+** Satisfied Customers





## QUESTION 1

You are using Microsoft Test Manager (MTM) to perform exploratory testing.

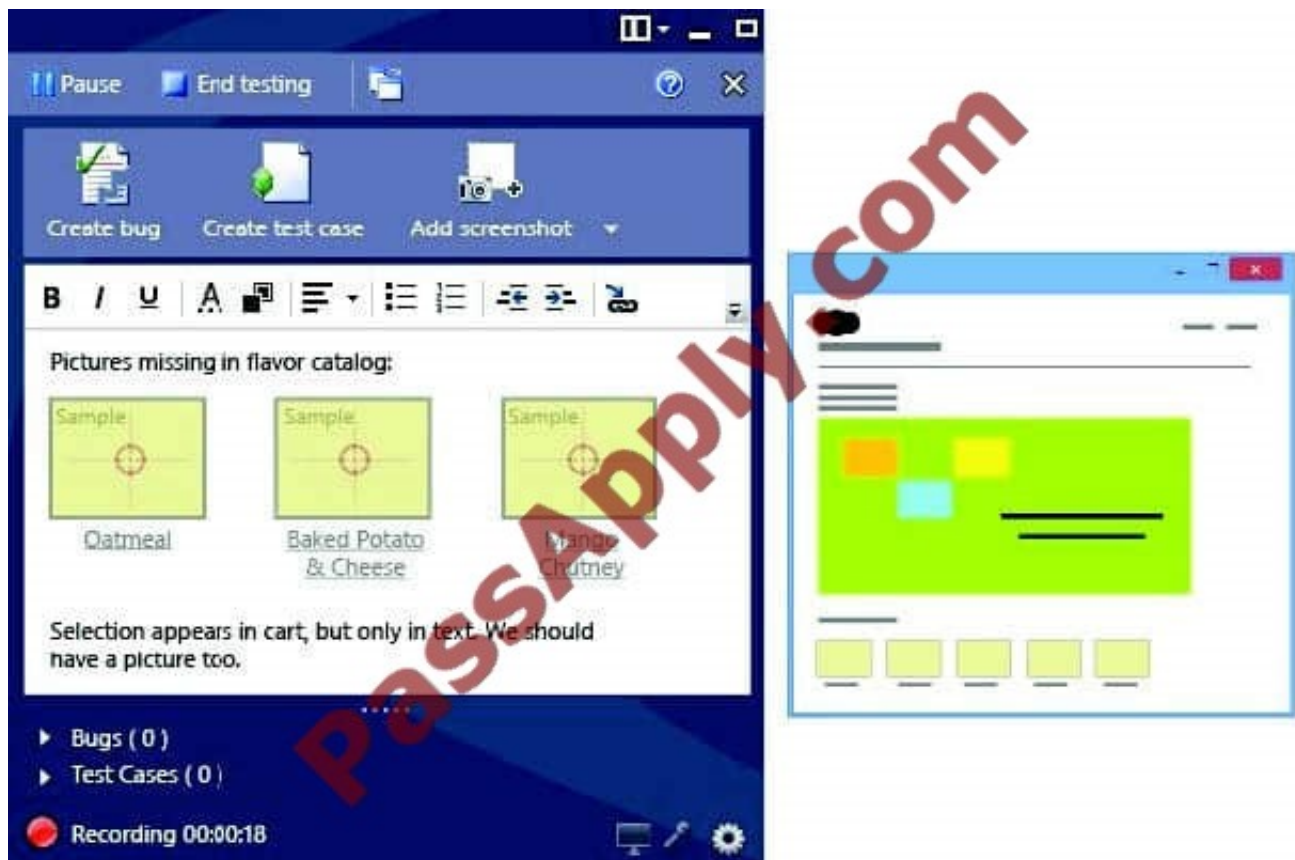
You need to insert an image into the comment area for the test run.

What are two possible ways to accomplish this goal? (Each correct answer presents a complete solution. Choose two.)

- A. Use the Add screenshot tool in the exploratory test runner and drag the selection box over the area of the screen you want to capture.
- B. Capture the image you want to insert by using your favorite screen capture utility and paste the image into the comment area of the exploratory testing window.
- C. Capture the image you want to insert by using your favorite screen capture utility and save the file to disk. Add the image as an attachment to the test run.
- D. Capture the image you want to insert by using your favorite screen capture utility. Drag and drop the file onto the comment area from the Windows Explorer.

Correct Answer: AC

A: While you work with the application, add comments and screenshots in the Test Runner window.



C: \* Microsoft Test Manager (MTM) helps you by recording the actions you perform as you work with your application. You can also record screenshots, comments, file attachments, audio narration and screen video.



## QUESTION 2

You are using Microsoft Test Manager (MTM). You have developed a new test case.

You need to:

Set the test case priority,

Set the area where the test will be used, and

Update the work item state to Ready.

What should you do?

- A. Open the Test Configuration Manager view and change the area path, priority, and state.
- B. Open the Test Plan Manager view and change the area path, priority, and state.
- C. Open the test case work item and change the area path, priority, and state.
- D. Open the test plan Properties view and change the area path, priority, and state.

Correct Answer: C

Q: How do I change the state of test suites with TFS 2013. 3?

A: Open the test suite and change the state in the work item form.

---

## QUESTION 3

You are part of a test team that uses Microsoft Test Manager (MTM) on a project. The project uses the Microsoft Visual Studio Scrum 2013 process template.

Your test team constantly adds new test cases.

You need to create a test suite that automatically includes all test cases related to the Accounting section of the application.

What should you do?

- A. Create a requirements-based test suite that includes all requirements with an Area Path of Accounting.
- B. Create a query-based test suite that selects all test cases with an Area Path of Accounting.
- C. Create a static suite that includes all test cases, and use the Filter option to only show accounting-related test cases.
- D. Create a new query for all test cases with an Area Path of Accounting, and then copy the resulting test cases into a new test suite.

Correct Answer: A

Requirements-based suites are derived from Product Backlog Items, User Stories, or other requirements. The suite contains all the test cases that are linked to its requirement. This type helps you track how well each requirement has



been tested.

Note: By using Microsoft Test Manager, you can organize test cases into a hierarchy of test suites inside test plans. You can run all of the test cases in a suite one after another, and you can set the state of a suite to indicate whether it is planned, in progress, or completed.

Reference: Organizing Test Cases Using Test Suites

---

#### QUESTION 4

You are a test developer using Microsoft Test Manager (MTM).

A test case that you maintain needs to be modified to test for a series of values returned after a price calculation. You add a test step to test for these data values.

You need to add a parameter to the test case that represents the expected results.

What are two possible ways to achieve this goal? (Each correct answer presents a complete solution. Choose two.)

- A. Click in the test step Action column, then click Insert parameter and type the parameter name.
- B. Enter the parameter name into the Parameter Values field and press Enter.
- C. Click in the test step Expected Result column and type the parameter name preceded by the @ symbol.
- D. Click in the test step Expected Result column, then click Insert parameter and type the parameter name.
- E. Click in the test step Expected Result column and type the parameter name.

Correct Answer: CD

To insert or delete parameters and add the value for a parameter

1.

Open Microsoft Test Manager.

2.

From the Testing Center, choose Organize and then choose Shared Steps Manager.

The Shared Steps Manager pane is displayed.

3.

To add parameters to your shared steps, select the shared steps from the list.

4.

To open the shared steps, choose Open.

5.

Choose where you want to insert your parameter in either Action or Expected Result.



Then choose Insert parameter.

The Insert Parameter dialog box is displayed.

6.

Type the name of your parameter and then choose Insert parameter.

The parameter is displayed in the step preceded by @.

7.

Choose Enter.

Reference: How to: Add Parameters to Shared Steps

---

## QUESTION 5

You are a test developer using Microsoft Test Manager (MTM).

You are editing a test suite in a plan for a product.

You need to change the default configuration setting for the test suite.

What should you do?

- A. For the selected test suite, assign a new configuration by choosing select the configuration for all tests.
- B. Change the state on the configuration to Active with add description as Default.
- C. Select the required configuration by choosing Select Test Configurations for all tests for the plan that needs editing.
- D. Check the Assign to new test plans check box in the Test Configuration pane.

Correct Answer: C

**Update Configurations for Specific Test Cases** You can update the default assignments of test configurations to test cases in each suite. You can remove pairings that you do not want to test and add other combinations. This gives you the flexibility to specify in your plan only those pairings of configurations and test cases that you really want to test as shown in the following illustration.



The screenshot shows the 'Testing Center' interface with the 'Plan' tab selected. The 'Contents' pane on the left shows a 'Beta Test Plan' folder. The main area displays 'Test suite: Beta Test Plan (ID: 10)' with 'Default configurations (1): Vista and IE 7'. A 'Configurations' button is visible. A 'Select Test Configurations' dialog is open, showing a table of 'Assigned configurations' and a list of 'All Configurations'. The dialog has three numbered callouts: 1. 'Change the default pairings of configurations and test cases' pointing to the 'Configurations' button. 2. 'Choose to see all the configurations in your team project that you can use' pointing to the 'All Configurations' tab. 3. 'Change the assignments as necessary for which tests you plan to run on the configurations' pointing to the 'Assigned configurations' table. The 'Assigned configurations' table has columns 'ID' and 'Title' with the following rows:

ID	Title
2493	Add one item to cart
2494	Add two different items to cart
2495	Add an item two times to cart

The 'All Configurations' list shows the following configurations selected:

- ☒ teamlab
- ☒ Win 8 and IE 11
- ☒ Win7
- ☒ Win7 and IE8
- ☒ Win7\_ENU\_x86

Buttons at the bottom of the dialog include 'Reset', 'Apply', and 'Don't apply'.

Reference: Creating and Defining a Test Plan

[70-497 PDF Dumps](#)

[70-497 Exam Questions](#)

[70-497 Braindumps](#)





VCE & PDF

PassApply.com

<https://www.passapply.com/70-497.html>

2021 Latest passapply 70-497 PDF and VCE dumps Download

To Read the [Whole Q&As](#), please purchase the [Complete Version](#) from [Our website](#).

## Try our product !

100% Guaranteed Success

100% Money Back Guarantee

365 Days Free Update

Instant Download After Purchase

24x7 Customer Support

Average 99.9% Success Rate

More than 800,000 Satisfied Customers Worldwide

Multi-Platform capabilities - [Windows](#), [Mac](#), [Android](#), [iPhone](#), [iPod](#), [iPad](#), [Kindle](#)

We provide exam PDF and VCE of Cisco, Microsoft, IBM, CompTIA, Oracle and other IT Certifications. You can view Vendor list of All Certification Exams offered:

<https://www.passapply.com/allproducts>

## Need Help

Please provide as much detail as possible so we can best assist you.

To update a previously submitted ticket:



 <b>One Year Free Update</b> <p>Free update is available within One Year after your purchase. After One Year, you will get 50% discounts for updating. And we are proud to boast a 24/7 efficient Customer Support system via Email.</p>	 <b>Money Back Guarantee</b> <p>To ensure that you are spending on quality products, we provide 100% money back guarantee for 30 days from the date of purchase.</p>	 <b>Security &amp; Privacy</b> <p>We respect customer privacy. We use McAfee's security service to provide you with utmost security for your personal information &amp; peace of mind.</p>
---	---	--

Any charges made through this site will appear as Global Simulators Limited.

All trademarks are the property of their respective owners.

Copyright © passapply, All Rights Reserved.