



70-473^{Q&As}

Designing and Implementing Cloud Data Platform Solutions

Pass Microsoft 70-473 Exam with 100% Guarantee

Free Download Real Questions & Answers **PDF** and **VCE** file from:

<https://www.passapply.com/70-473.html>

100% Passing Guarantee
100% Money Back Assurance

Following Questions and Answers are all new published by Microsoft
Official Exam Center

-  **Instant Download** After Purchase
-  **100% Money Back** Guarantee
-  **365 Days** Free Update
-  **800,000+** Satisfied Customers





QUESTION 1

DRAG DROP

You have a server that runs Windows Server 2016. You install three additional disks named Disk1, Disk2, and Disk3. You plan to use these physical disks to store data.

You need to create a volume to store data. The solution must prevent data loss in the event of a single disk failure.

Which three actions should you perform in sequence? To answer, move the appropriate actions from the list of actions to the answer area and arrange them in the correct order.

Select and Place:

Actions

- Assign a Storage Tier to a virtual disk.
- Create a Storage Pool.
- Create a new Storage Tier.
- Create a Virtual Disk Clone.
- Create a Volume.
- Create a Virtual Disk.

Answer Area

Answer Area interface showing empty slots with up/down arrows for ordering.

Correct Answer:

Actions

- Assign a Storage Tier to a virtual disk.
-
- Create a new Storage Tier.
- Create a Virtual Disk Clone.
-
-

Answer Area

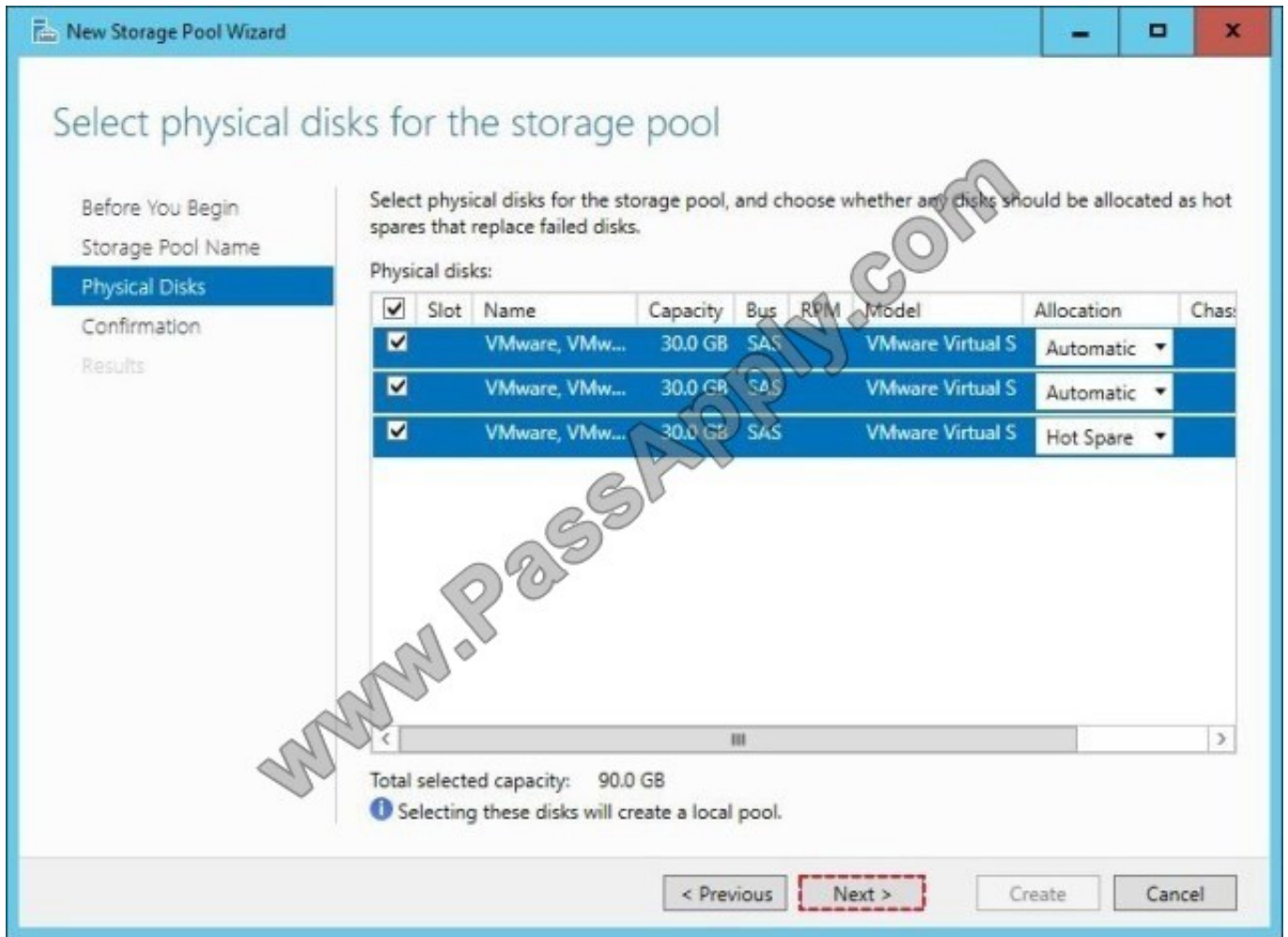
Answer Area interface showing the correct sequence of actions: Create a Storage Pool, Create a Virtual Disk, and Create a Volume.

Step 1: Create a Storage Pool

First we create a Storage Pool. We specify which disks should be included in the storage pool.

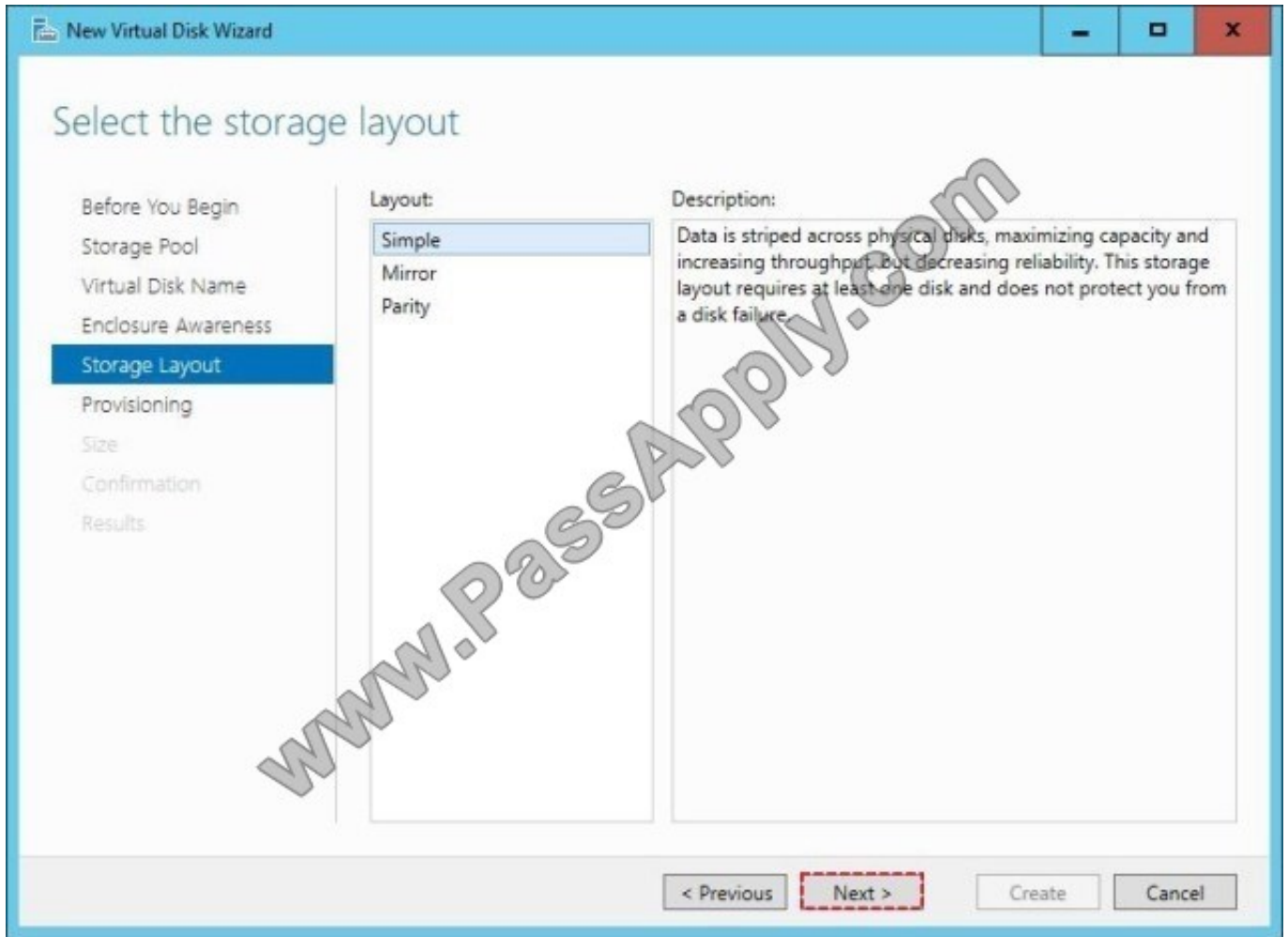


Example:



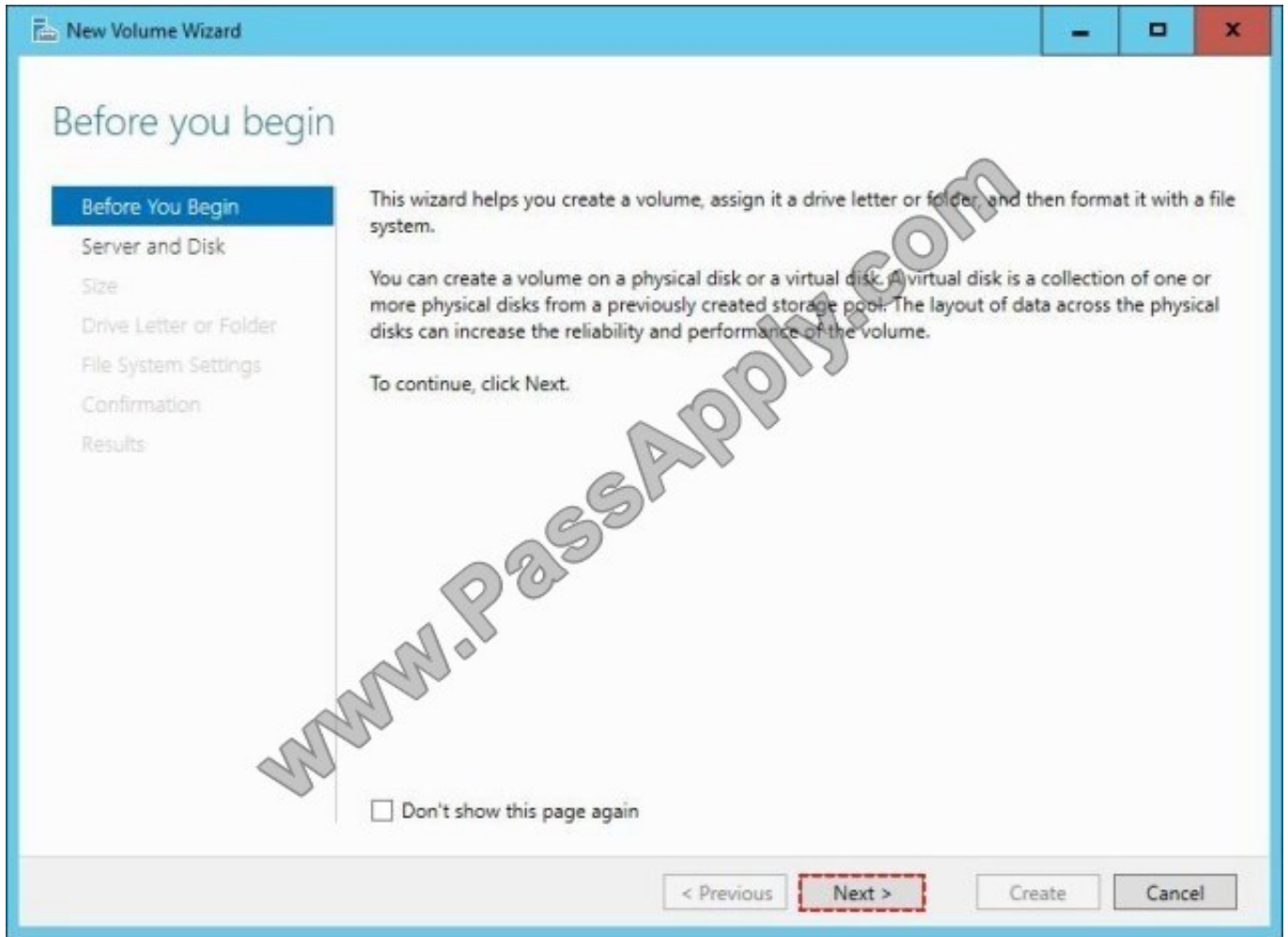
Step 2: Create a Virtual Disk

After creating the storage pool now start creating a virtual disk for the pool you had created.



Step 3: Create a Volume

After creating the virtual disk, create a volume with the NewVolume Wizard. You create the volume on the Virtual Disk you created in Step 2.



References: <http://www.tactig.com/create-a-storage-pool-windows-server/>

QUESTION 2

HOTSPOT

Your network contains an Active Directory domain named contoso.com. The domain contains a DNS server named Server1.

Server1 is configured to use a forwarder named Server2 that has an IP address of 10.0.0.10. Server2 can resolve names hosted on the Internet successfully. Server2 hosts a primary DNS zone named adatum.com

On Server1, you have the following zone configuration.

ZoneName	ZoneType	IsAutoCreated	IsDnsIntegrated	IsReverseLookupZone	IsSigned
.	Primary	False	False	False	False
_msdcs.contoso.com	Primary	False	True	False	False
contoso.com	Primary	False	True	False	False
fabrikam.com	Secondary	False	False	False	False



The "." zone contains the following records.

HostName	RecordType	Type	Timestamp	TimeToLive	RecordData
@	NS	2	0	01:00:00	server1.contoso.com.
@	SOA	6	0	01:00:00	[1][server1.contoso.com.[hostm...
server1.contoso.com	A	1	0	01:00:00	10.0.0.4

For each of the following statements, select Yes if the statement is true. Otherwise, select No.

Hot Area:

Answer Area

Statements	Yes	No
Server1 can resolve host names that are in the adatum.com zone on Server2.	<input type="radio"/>	<input type="radio"/>
Server1 can resolve www.microsoft.com to an IP address successfully.	<input type="radio"/>	<input type="radio"/>
Server1 can resolve host names that are in the contoso.com zone.	<input type="radio"/>	<input type="radio"/>

Correct Answer:

Answer Area

Statements	Yes	No
Server1 can resolve host names that are in the adatum.com zone on Server2.	<input type="radio"/>	<input checked="" type="radio"/>
Server1 can resolve www.microsoft.com to an IP address successfully.	<input type="radio"/>	<input checked="" type="radio"/>
Server1 can resolve host names that are in the contoso.com zone.	<input checked="" type="radio"/>	<input type="radio"/>

Server1 has a root (.) zone. A root zone will disable the use of any forwarders. Therefore, Server1 can only resolve DNS queries for zones that Server1 hosts (zones that Server1 is authoritative for). Therefore, Server1 can resolve hostnames in the contoso.com zone.



QUESTION 3

HOTSPOT

You have an Active Directory domain named Contoso.com. The domain contains Hyper-V hosts named Server1 and Server2 that run Windows Server 2016. The Hyper-V hosts are configured to use NVGRE for network virtualization.

You have six virtual machines that are connected to an external switch. The virtual machines are configured as shown.

Virtual Machine Name	Hyper-V host	IP address	Netmask	GRE key
VM1	Server1	192.168.1.15	255.255.255.0	16
VM2	Server2	192.168.1.232	255.255.255.0	32
VM3	Server3	192.168.1.32	255.255.255.0	32
VM4	Server4	192.168.1.25	255.255.255.0	25
VM5	Server5	192.168.1.116	255.255.255.0	16
VM6	Server6	192.168.1.132	255.255.255.0	32

To which virtual machine or virtual machines can VM1 and VM3 connect? To answer, select the appropriate options in the answer area.

Hot Area:

Answer Area

VM1 can connect to:

- VM2 only
- VM5 only
- VM2, VM3, VM5, and VM6 only
- VM2, VM3, VM4, VM5, and VM6

VM3 can connect to:

- VM6 only
- VM2, and VM6 only
- VM4, VM5, and VM6 only
- VM1, VM2, VM5, and VM6 only
- VM1, VM2, VM4, VM5, and VM6

Correct Answer:



Answer Area

VM1 can connect to:

VM2 only
VM5 only
VM2, VM3, VM5, and VM6 only
VM2, VM3, VM4, VM5, and VM6

VM3 can connect to:

VM6 only
VM2, and VM6 only
VM4, VM5, and VM6 only
VM1, VM2, VM5, and VM6 only
VM1, VM2, VM4, VM5, and VM6

The GRE keys must match.

To separate the traffic between the two virtualized networks, the GRE headers on the tunneled packets include a GRE Key that provides a unique Virtual Subnet ID for each virtualized network.

References:

<https://blogs.technet.microsoft.com/keithmayer/2012/10/08/step-by-step-hyper-v-network-virtualization-31-days-of-favorite-features-in-winserv-2012-part-8-of-31/>

QUESTION 4

DRAG DROP

Your network contains an Active Directory domain named contoso.com. The domain contains two servers named Server1 and Server2 that run Windows Server 2016.

Server1 has IP Address Management (IPAM) installed. Server2 has Microsoft System Center 2016 Virtual Machine Manager (VMM) installed.

You need to integrate IPAM and VMM.

Which types of objects should you create on each server? To answer, drag the appropriate object types to the correct servers. Each object type may be used once, more than once, or not at all. You may need to drag the split bar between panes or scroll to view content.

Select and Place:



Objects

Access Policy	Network Service
Run As Account	Service Template
User Role	

Answer Area

Server1:	Object	
Server2:	Object	Object

Correct Answer:

Objects

	Service Template
User Role	

Answer Area

Server1:	Access Policy	
Server2:	Network Service	Run As Account

Server 1 (IPAM): Access Policy

VMM must be granted permission to view and modify IP address space in IPAM, and to perform remote management of the IPAM server. VMM uses a "Run As" account to provide these permissions to the IPAM network service plugin. The

"Run As" account must be configured with appropriate permission on the IPAM server.

To assign permissions to the VMM user account

In the IPAM server console, in the upper navigation pane, click ACCESS CONTROL, right- click Access Policies in the lower navigation pane, and then click Add AccessPolicy.

Etc.

Server 2 (VMM) #1: Network Service

Server 2 (VMM) #2: Run As Account

Perform the following procedure using the System Center VMM console.

To configure VMM (see step 1-3, step 6-7)



Create Run As Account

Provide the details for this Run As account

Name: VMM User

Description: This domain account is used exclusively by this instance of VMM to integrate with the IPAM server IPAM1.contoso.com.

User name: contoso\vmuser
Example: contoso\domainuser or localuser

Password: ●●●●●●●●

Confirm password: ●●●●●●●●

Validate domain credentials

View Script OK Cancel

Etc.

References: [https://technet.microsoft.com/en-us/library/dn783349\(v=ws.11\).aspx](https://technet.microsoft.com/en-us/library/dn783349(v=ws.11).aspx)

QUESTION 5

DRAG DROP

You plan to create a database named DB1.

You need to ensure that all the data in DB1 is encrypted when the database is at rest.

Which four actions should you perform in sequence after you create DB1? To answer, move the appropriate actions from the list of actions to the answer area and arrange them in the correct order.

Select and Place:



Actions

From the master database, run CREATE MASTER KEY .
From the master database, run CREATE CERTIFICATE cert1 WITH Subject = 'TDE Cert' .
From DB1, run CREATE DATABASE ENCRYPTION KEY .
From DB1, run CREATE CERTIFICATE cert1 WITH Subject = 'TDE Cert' .
From master database, run CREATE DATABASE ENCRYPTION KEY .
From the master database, run ALTER DATABASE DB1 SET ENCRYPTION ON .

Answer Area

Navigation icons: right arrow, left arrow, up arrow, down arrow

Correct Answer:

Actions

From DB1, run CREATE CERTIFICATE cert1 WITH Subject = 'TDE Cert' .
From master database, run CREATE DATABASE ENCRYPTION KEY .

Answer Area

From the master database, run CREATE MASTER KEY .
From the master database, run CREATE CERTIFICATE cert1 WITH Subject = 'TDE Cert' .
From DB1, run CREATE DATABASE ENCRYPTION KEY .
From the master database, run ALTER DATABASE DB1 SET ENCRYPTION ON .

Navigation icons: right arrow, left arrow, up arrow, down arrow

References: <https://docs.microsoft.com/en-us/sql/relational-databases/security/encryption/transparent-data-encryption?view=sql-server-2017>

[Latest 70-473 Dumps](#)

[70-473 PDF Dumps](#)

[70-473 Exam Questions](#)



To Read the [Whole Q&As](#), please purchase the [Complete Version](#) from [Our website](#).

Try our product !

100% Guaranteed Success
100% Money Back Guarantee
365 Days Free Update
Instant Download After Purchase
24x7 Customer Support
Average 99.9% Success Rate
More than 800,000 Satisfied Customers Worldwide
Multi-Platform capabilities - [Windows](#), [Mac](#), [Android](#), [iPhone](#), [iPod](#), [iPad](#), [Kindle](#)

We provide exam PDF and VCE of Cisco, Microsoft, IBM, CompTIA, Oracle and other IT Certifications. You can view Vendor list of All Certification Exams offered:

<https://www.passapply.com/allproducts>

Need Help

Please provide as much detail as possible so we can best assist you.
To update a previously submitted ticket:



 <p>One Year Free Update Free update is available within One Year after your purchase. After One Year, you will get 50% discounts for updating. And we are proud to boast a 24/7 efficient Customer Support system via Email.</p>	 <p>Money Back Guarantee To ensure that you are spending on quality products, we provide 100% money back guarantee for 30 days from the date of purchase.</p>	 <p>Security & Privacy We respect customer privacy. We use McAfee's security service to provide you with utmost security for your personal information & peace of mind.</p>
---	---	--

Any charges made through this site will appear as Global Simulators Limited.
All trademarks are the property of their respective owners.
Copyright © passapply, All Rights Reserved.