



# 70-467<sup>Q&As</sup>

Designing Business Intelligence Solutions with Microsoft SQL Server

## Pass Microsoft 70-467 Exam with 100% Guarantee

Free Download Real Questions & Answers **PDF** and **VCE** file from:

<https://www.passapply.com/70-467.html>

100% Passing Guarantee  
100% Money Back Assurance

Following Questions and Answers are all new published by Microsoft  
Official Exam Center

-  **Instant Download** After Purchase
-  **100% Money Back** Guarantee
-  **365 Days** Free Update
-  **800,000+** Satisfied Customers





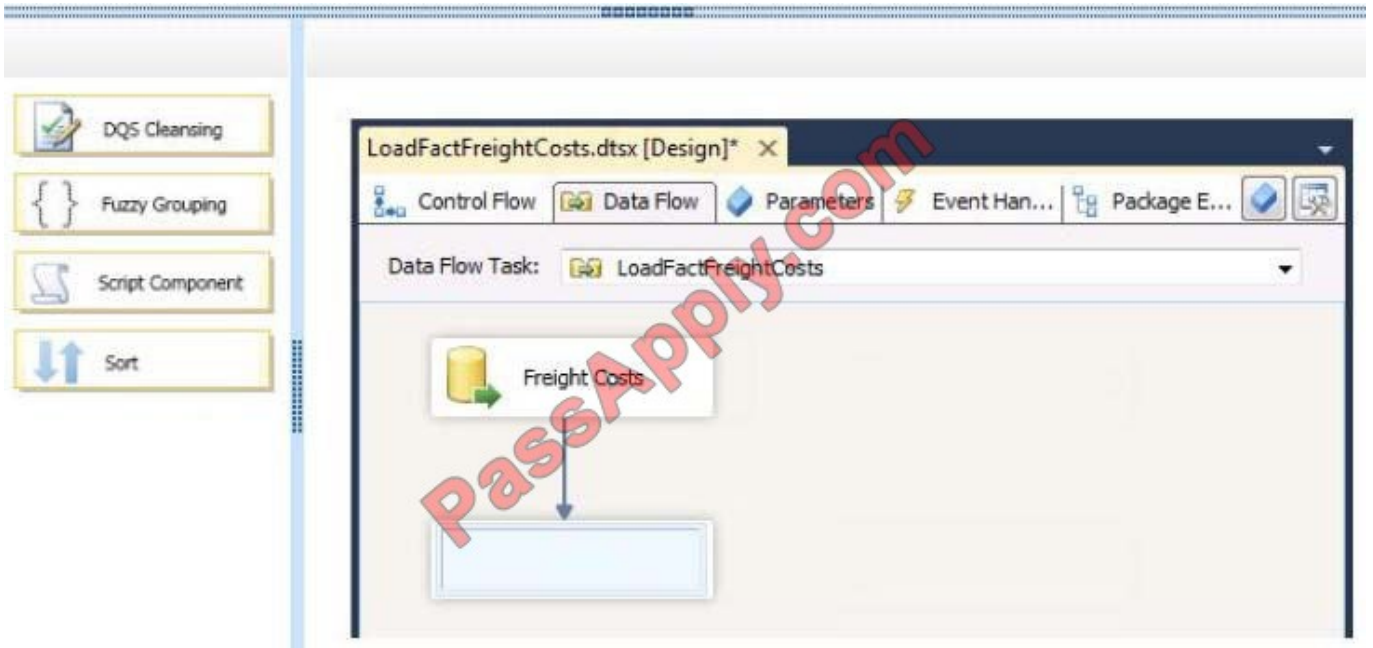
**QUESTION 1**

DRAG DROP

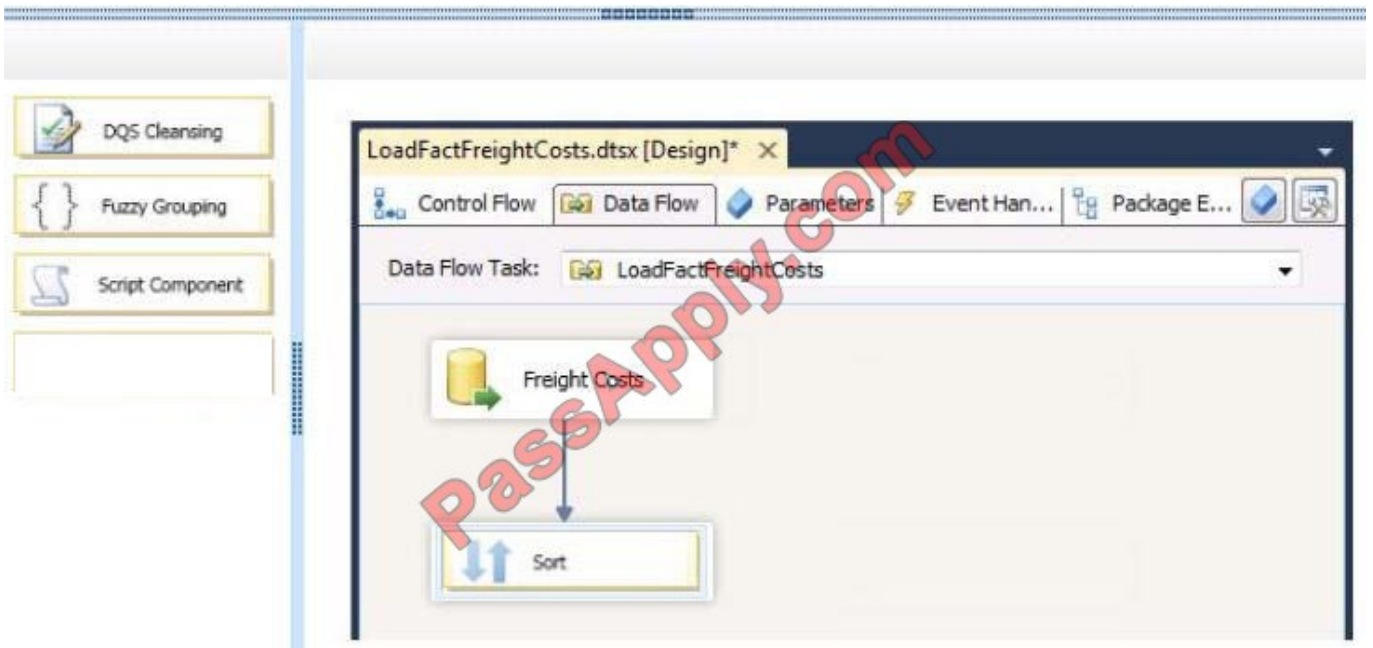
You need to configure the LoadFactFreightCosts package to address the data integrity issues.

Which data flow component should you use? To answer, drag the appropriate data flow component to the answer area.

Select and Place:



Correct Answer:





## QUESTION 2

### DRAG DROP

You are creating the Australian states query.

Which Multidimensional Expressions (MDX) calculation should you use to complete the queryTo answer, drag the appropriate calculation to the answer area.

Select and Place:



```
SUM(
  TOPCOUNT(DESCENDANTS([Customer].[Geography].CURRENTMEMBER,
    [Customer].[Geography].[City]), 10,
    [Measures].[Sales Amount]),
  [Measures].[Sales Amount])
/
([Customer].[Geography].CURRENTMEMBER, [Measures].[Sales Amount])
```

```
SUM(
  TOPCOUNT(DESCENDANTS([Customer].[Geography].CURRENTMEMBER,
    [Customer].[Geography].[Customer]), 10,
    [Measures].[Sales Amount]),
  [Measures].[Sales Amount])
/
([Customer].[Geography].CURRENTMEMBER, [Measures].[Sales Amount])
```

```
SUM(
  GENERATE(DESCENDANTS([Customer].[Geography].CURRENTMEMBER,
    [Customer].[Geography].[City]),
    TOPCOUNT(DESCENDANTS([Customer].[Geography].CURRENTMEMBER,
    [Customer].[Geography].[Customer]), 10,
    [Measures].[Sales Amount])),
  [Measures].[Sales Amount])
/
([Customer].[Geography].CURRENTMEMBER, [Measures].[Sales Amount])
```

```
SUM(
  GENERATE(DESCENDANTS([Customer].[Geography].CURRENTMEMBER,
    [Customer].[Geography].[City]),
    TOPCOUNT(DESCENDANTS([Customer].[Geography].CURRENTMEMBER,
    [Customer].[Geography].[City]), 10,
    [Measures].[Sales Amount])),
  [Measures].[Sales Amount])
/
([Customer].[Geography].CURRENTMEMBER, [Measures].[Sales Amount])
```

```
WITH MEMBER [Measures].[State Sales Density By Top 10 Customers Per City]
AS
```



```
SELECT
  {[Measures].[State Sales Density By Top 10 Customers Per City]}
ON COLUMNS,
  [Customer].[Geography].[Australia].CHILDREN ON ROWS
FROM
  [Sales]
WHERE
  ([Date].[Fiscal].[FY2012])
```



Correct Answer:



```
SUM(
  TOPCOUNT(DESCENDANTS([Customer].[Geography].CURRENTMEMBER,
    [Customer].[Geography].[City]), 10,
    [Measures].[Sales Amount]),
  [Measures].[Sales Amount])
/
([Customer].[Geography].CURRENTMEMBER, [Measures].[Sales Amount])
```

```
SUM(
  TOPCOUNT(DESCENDANTS([Customer].[Geography].CURRENTMEMBER,
    [Customer].[Geography].[Customer]), 10,
    [Measures].[Sales Amount]),
  [Measures].[Sales Amount])
/
([Customer].[Geography].CURRENTMEMBER, [Measures].[Sales Amount])
```

```
SUM(
  GENERATE(DESCENDANTS([Customer].[Geography].CURRENTMEMBER,
    [Customer].[Geography].[City]),
    TOPCOUNT(DESCENDANTS([Customer].[Geography].CURRENTMEMBER,
    [Customer].[Geography].[City]), 10,
    [Measures].[Sales Amount])),
  [Measures].[Sales Amount])
/
([Customer].[Geography].CURRENTMEMBER, [Measures].[Sales Amount])
```

WITH MEMBER [Measures].[State Sales Density By Top 10 Customers Per City]  
AS

```
SUM(
  GENERATE(DESCENDANTS([Customer].[Geography].CURRENTMEMBER,
    [Customer].[Geography].[City]),
    TOPCOUNT(DESCENDANTS([Customer].[Geography].CURRENTMEMBER,
    [Customer].[Geography].[Customer]), 10,
    [Measures].[Sales Amount])),
  [Measures].[Sales Amount])
/
([Customer].[Geography].CURRENTMEMBER, [Measures].[Sales Amount])
```

```
SELECT
  {[Measures].[State Sales Density By Top 10 Customers Per City]}
ON COLUMNS,
[Customer].[Geography].[Australia].CHILDREN ON ROWS
FROM
  [Sales]
WHERE
  ([Date].[Fiscal].[FY2012])
```





### QUESTION 3

You need to create the Package Activity report. What should you do?

- A. Create a log table and use SSIS event handlers to write to the log table. Then create an SSRS report that uses the log table.
- B. Use the SSIS log provider for SQL Server. Then create an SSRS report that uses the sysssislog table.
- C. Create a log table and build a custom log provider to write to the log table. Then create an SSRS report that uses the log table.
- D. Create an SSRS report that uses the catalog.executions and catalog.execution\_data\_statistics views.

Correct Answer: D

---

### QUESTION 4

You need to select an appropriate tool for creating the Regional Sales report.

Which tools or tools should you use(Each correct answer presents a complete solution. Choose all that apply.)

- A. Power View, using a table configured for vertical multiples
- B. Excel 2010, using a PivotTable
- C. Report Builder, using a Matrix
- D. Power View, using a table configured for horizontal multiples

Correct Answer: BC

---

### QUESTION 5

You need to recommend a solution to implement the data security requirements for CUBE1.

Which three actions should you recommend performing in sequenceTo answer, move the appropriate actions from the list of actions to the answer area and arrange them in the correct order.

Select and Place:



Actions	Answer Area
Create a factless fact table.	
Create a perspective.	
Write an MDX expression.	
Enable Visual Totals.	
Create a SQL Server login.	

Correct Answer:

Actions	Answer Area
Create a factless fact table.	Create a SQL Server login.
Create a perspective.	Write an MDX expression.
	Enable Visual Totals.

[70-467 VCE Dumps](#)

[70-467 Practice Test](#)

[70-467 Study Guide](#)





To Read the [Whole Q&As](#), please purchase the [Complete Version](#) from [Our website](#).

## Try our product !

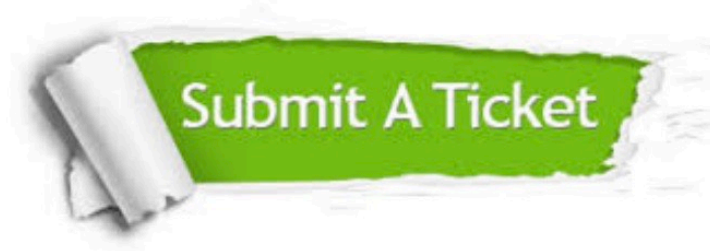
100% Guaranteed Success  
100% Money Back Guarantee  
365 Days Free Update  
Instant Download After Purchase  
24x7 Customer Support  
Average 99.9% Success Rate  
More than 800,000 Satisfied Customers Worldwide  
Multi-Platform capabilities - [Windows](#), [Mac](#), [Android](#), [iPhone](#), [iPod](#), [iPad](#), [Kindle](#)

We provide exam PDF and VCE of Cisco, Microsoft, IBM, CompTIA, Oracle and other IT Certifications. You can view Vendor list of All Certification Exams offered:

<https://www.passapply.com/allproducts>

## Need Help

Please provide as much detail as possible so we can best assist you.  
To update a previously submitted ticket:



 <p><b>One Year Free Update</b> Free update is available within One Year after your purchase. After One Year, you will get 50% discounts for updating. And we are proud to boast a 24/7 efficient Customer Support system via Email.</p>	 <p><b>Money Back Guarantee</b> To ensure that you are spending on quality products, we provide 100% money back guarantee for 30 days from the date of purchase.</p>	 <p><b>Security &amp; Privacy</b> We respect customer privacy. We use McAfee's security service to provide you with utmost security for your personal information &amp; peace of mind.</p>
---	---	--

Any charges made through this site will appear as Global Simulators Limited.  
All trademarks are the property of their respective owners.  
Copyright © passapply, All Rights Reserved.