



70-460^{Q&As}

Transition Your MCITP: Business Intelligence Developer 2008 to
MCSE: Business Intelligence

Pass Microsoft 70-460 Exam with 100% Guarantee

Free Download Real Questions & Answers **PDF** and **VCE** file from:

<https://www.passapply.com/70-460.html>

100% Passing Guarantee
100% Money Back Assurance

Following Questions and Answers are all new published by Microsoft
Official Exam Center

-  **Instant Download** After Purchase
-  **100% Money Back** Guarantee
-  **365 Days** Free Update
-  **800,000+** Satisfied Customers





QUESTION 1

You are designing a business intelligence (BI) solution for a hotel booking system. Each hotel booking may have more than one guest.

The BI solution contains a fact table named Booking, a factless fact table named Booking_Guest and a dimension named Guest.

Booking contains an entry for each booking. Booking_Guest contains an entry for each guest in each booking. Guest contains an entry for each guest.

You need to define the many-to-many relationship in SQL Server Analysis Services (SSAS) for the hotel booking system.

Which four actions should you perform in sequence? To answer, move the appropriate actions from the list of actions to the answer area and arrange them in the correct order.

Select and Place:

The screenshot shows the SSAS Wizard interface with two main sections: 'Actions' and 'Answer Area'. The 'Actions' list contains the following items:

- Select the referenced relationship type.
- Select the Booking_Guest intermediate measure group.
- Click the button of the cell intersection of the Booking measure group and the Guest dimension.
- Execute the Business Intelligence Wizard.
- Select the Dimension Usage tab.
- Select the many-to-many relationship type.

The 'Answer Area' is currently empty. A large watermark 'www.PassApply.com' is overlaid diagonally across the interface.

Correct Answer:



Actions	Answer Area
Select the referenced relationship type.	Select the Dimension Usage tab.
	Click the button of the cell intersection of the Booking measure group and the Guest dimension.
	Select the many-to-many relationship type.
Execute the Business Intelligence Wizard.	Select the Booking_Guest intermediate measure group.

QUESTION 2

You need to define the trend calculation for the sales performance KPI.

Which KPI trend MDX expression should you use?

- A. `IIF([Sales Variance %] < ([Sales Variance %], [Date].[Calendar].PrevMember), 1, 0)`
- B. `CASE`
`WHEN [Sales Variance %] < ([Sales Variance %], [Date].[Calendar].PrevMember) THEN 1`
`WHEN [Sales Variance %] = ([Sales Variance %], [Date].[Calendar].PrevMember) THEN 0`
`ELSE -1`
`END`
- C. `CASE`
`WHEN [Sales Variance %] < ([Sales Variance %], [Date].[Calendar].PrevMember) THEN -1`
`WHEN [Sales Variance %] = ([Sales Variance %], [Date].[Calendar].PrevMember) THEN 0`
`ELSE 1`
`END`
- D. `IIF([Sales Variance %] < ([Sales Variance %], [Date].[Calendar].PrevMember), 0, 1)`

A. Option A

B. Option B



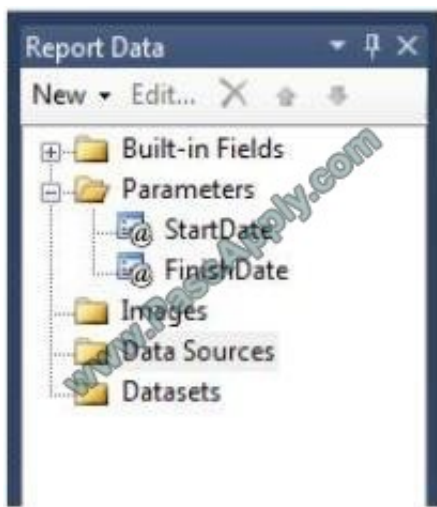
C. Option C

D. Option D

Correct Answer: C

QUESTION 3

You are developing a SQL Server Reporting Services (SSRS) report that sources data from a SQL Azure database and a SQL Server Analysis Services (SSAS) cube. The cube contains a date dimension and other dimensions. The report design includes two report parameters named StartDate and FinishDate as shown in the following diagram.



The Data Type property of the parameters is set to Date/Time.

You need to create the dataset based on the SSAS cube. You also need to ensure that the dataset is filtered by the existing report parameters.

Which three actions should you perform in sequence? (To answer, move the appropriate actions from the list of actions to the answer area and arrange them in the correct order.)

Select and Place:



Create a data source using the Microsoft SQL Server connection type.

Modify the parameter expressions of the dataset to include the **ToString()** function.

Create two report parameters with Date/Time data types to receive their default values from the two hidden datasets.

Create a dataset with a parameterized filter using a hierarchy from the date dimension that uses the **Contains** operator. Do not close the Dataset Properties window.

Create a dataset with a parameterized filter using a hierarchy from the date dimension that uses the **Range (Inclusive)** operator. Do not close the Dataset Properties window.

Create a data source using the Microsoft SQL Server Analysis Services connection type.

Write an expression in the dataset Parameter Value textbox that converts the Date/Time parameter values to be compatible with the dimension member.

Select the **Parameters** page and then assign an expression to each query parameter to convert the report parameter values to the appropriate date dimension hierarchy member keys.

Correct Answer:



Create a data source using the Microsoft SQL Server connection type.	Create a data source using the Microsoft SQL Server Analysis Services connection type.
Modify the parameter expressions of the dataset to include the ToString() function.	Create a dataset with a parameterized filter using a hierarchy from the date dimension that uses the Range (Inclusive) operator. Do not close the Dataset Properties window.
Create two report parameters with Date/Time data types to receive their default values from the two hidden datasets.	Select the Parameters page and then assign an expression to each query parameter to convert the report parameter values to the appropriate date dimension hierarchy member keys.
Create a dataset with a parameterized filter using a hierarchy from the date dimension that uses the Contains operator. Do not close the Dataset Properties window.	
Write an expression in the dataset Parameter Value textbox that converts the Date/Time parameter values to be compatible with the dimension member.	

QUESTION 4

You are designing a SQL Server Reporting Services (SSRS) report to display vineyard names and their year-to-date (YTD) grape yield. Grape yield values are classified in three bands:

High Yield

Medium Yield

Low Yield

You add a table to the report. Then you define two columns based on the fields named VineyardName and YTDGrapeYield.

You need to set the color of the vineyard text to red, yellow, or blue, depending on the value of the YTD grape yield values.

What should you do?

A.

Use an expression for the Font property of the vineyard text box.

B.



Add an indicator to the table.

C.

Use an expression for the TextDecoration property of the vineyard text box.

D.

Use an expression for the Color property of the vineyard text box.

E.

Use an expression for the Style property of the vineyard text box.

Correct Answer: D

QUESTION 5

You are modifying a star schema data mart that feeds order data from a Microsoft Azure SQL Database database into a SQL Server Analysis Services (SSAS) cube. The data mart contains two large tables that include flags and indicators for

some orders. There are 100 different flag columns, each with 10 different indicator values. Some flags reuse indicators. The tables both have a granularity that matches the fact table.

You have the following requirements:

Allow users to slice data by all flags and indicators.

Modify the date dimension table to include a surrogate key of a numeric data type and add the surrogate key to the fact table.

Use the most efficient design strategy for cube processing and queries.

You need to modify the schema.

What should you do? (More than one answer choice may achieve the goal. Select the BEST answer.)

A.

Define the surrogate key as an INT data type. Combine the distinct flag/indicator combinations into a single dimension.

B.

Define the surrogate key as an INT data type. Create a single fact dimension in each table for its flags and indicators.

C.

Define the surrogate key as a BIGINT data type. Combine the distinct flag/indicator combinations into a single dimension.

D.



Define the surrogate key as a BIGINT data type. Create a single fact dimension in each table for its flags and indicators.

Correct Answer: A

[70-460 Study Guide](#)

[70-460 Exam Questions](#)

[70-460 Braindumps](#)



To Read the [Whole Q&As](#), please purchase the [Complete Version](#) from [Our website](#).

Try our product !

100% Guaranteed Success
100% Money Back Guarantee
365 Days Free Update
Instant Download After Purchase
24x7 Customer Support
Average 99.9% Success Rate
More than 800,000 Satisfied Customers Worldwide
Multi-Platform capabilities - [Windows](#), [Mac](#), [Android](#), [iPhone](#), [iPod](#), [iPad](#), [Kindle](#)

We provide exam PDF and VCE of Cisco, Microsoft, IBM, CompTIA, Oracle and other IT Certifications. You can view Vendor list of All Certification Exams offered:

<https://www.passapply.com/allproducts>

Need Help

Please provide as much detail as possible so we can best assist you.
To update a previously submitted ticket:



 <p>One Year Free Update Free update is available within One Year after your purchase. After One Year, you will get 50% discounts for updating. And we are proud to boast a 24/7 efficient Customer Support system via Email.</p>	 <p>Money Back Guarantee To ensure that you are spending on quality products, we provide 100% money back guarantee for 30 days from the date of purchase.</p>	 <p>Security & Privacy We respect customer privacy. We use McAfee's security service to provide you with utmost security for your personal information & peace of mind.</p>
---	---	--

Any charges made through this site will appear as Global Simulators Limited.
All trademarks are the property of their respective owners.
Copyright © passapply, All Rights Reserved.