



# 70-458<sup>Q&As</sup>

Transition Your MCTS on SQL Server 2008 to MCSA: SQL Server 2012, Part 2

## Pass Microsoft 70-458 Exam with 100% Guarantee

Free Download Real Questions & Answers **PDF** and **VCE** file from:

<https://www.passapply.com/70-458.html>

100% Passing Guarantee  
100% Money Back Assurance

Following Questions and Answers are all new published by Microsoft Official Exam Center

-  **Instant Download** After Purchase
-  **100% Money Back** Guarantee
-  **365 Days** Free Update
-  **800,000+** Satisfied Customers





### QUESTION 1

You are designing a SQL Server Integration Services (SSIS) data flow to load sales transactions from a source system into a data warehouse hosted on Windows Azure SQL Database. One of the columns in the data source is named

ProductCode.

Some of the data to be loaded will reference products that need special processing logic in the data flow.

You need to enable separate processing streams for a subset of rows based on the source product code.

- A. Data Conversion
- B. Conditional Split
- C. Destination Assistant
- D. Script Task

Correct Answer: B

The Conditional Split transformation can route data rows to different outputs depending on the content of the data <http://technet.microsoft.com/en-us/library/ms137886.aspx>

---

### QUESTION 2

Note: This question is part of a series of questions that use the same or similar answer choices. An answer choice may be correct for more than one question in the series. Each question is independent of the other questions in this series. Information and details provided in a question apply only to that question.

You are deploying a new SQL Server Integration Services (SSIS) package to several servers.

The package must meet the following requirements:

INET Common Language Runtime (CLR) integration in SQL Server must not be enabled.

The Connection Managers used in the package must be configurable without editing the package.

The deployment procedure must be automated as much as possible.

You need to set up a deployment strategy that meets the requirements.

- A. Use the gacutil command.
- B. use the dtutil /copy command.
- C. use the Project Deployment Wizard.
- D. create an OnError event handler.
- E. create a reusable custom logging component.
- F. Run the package by using the dtexec /rep /conn command.

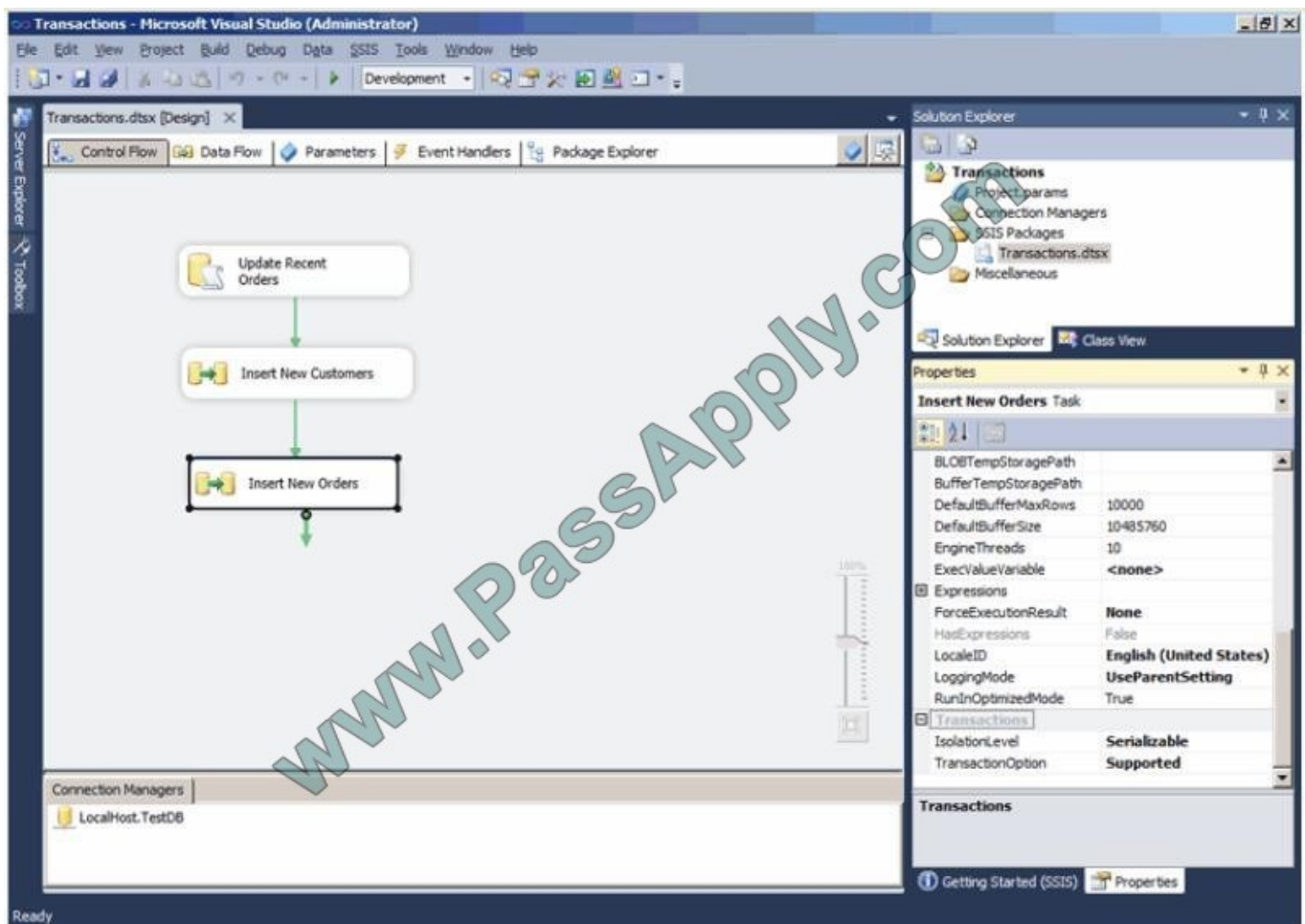


- G. Run the package by using the dtexec /dumperror /conn command.
  - H. Run the package by using the dtexecui.exe utility and the SQL Log provider.
  - I. Add a data tap on the output of a component in the package data flow.
  - J. Deploy the package by using an msi file.
  - K. Deploy the package to the Integration Services catalog by using dtutil and use SQL Server to store the configuration.
- Correct Answer: B

### QUESTION 3

You are designing a package control flow. The package moves sales order data from a Windows Azure SQL Database transactional database to an on-premise reporting database. The package will run several times a day, while new sales orders are being added to the transactional database.

The current design of the package control flow is shown in the answer area. (Click the Exhibit button.)



The Insert New Orders Data Flow task must meet the following requirements:



Usage of the tempdb database should not be impacted.

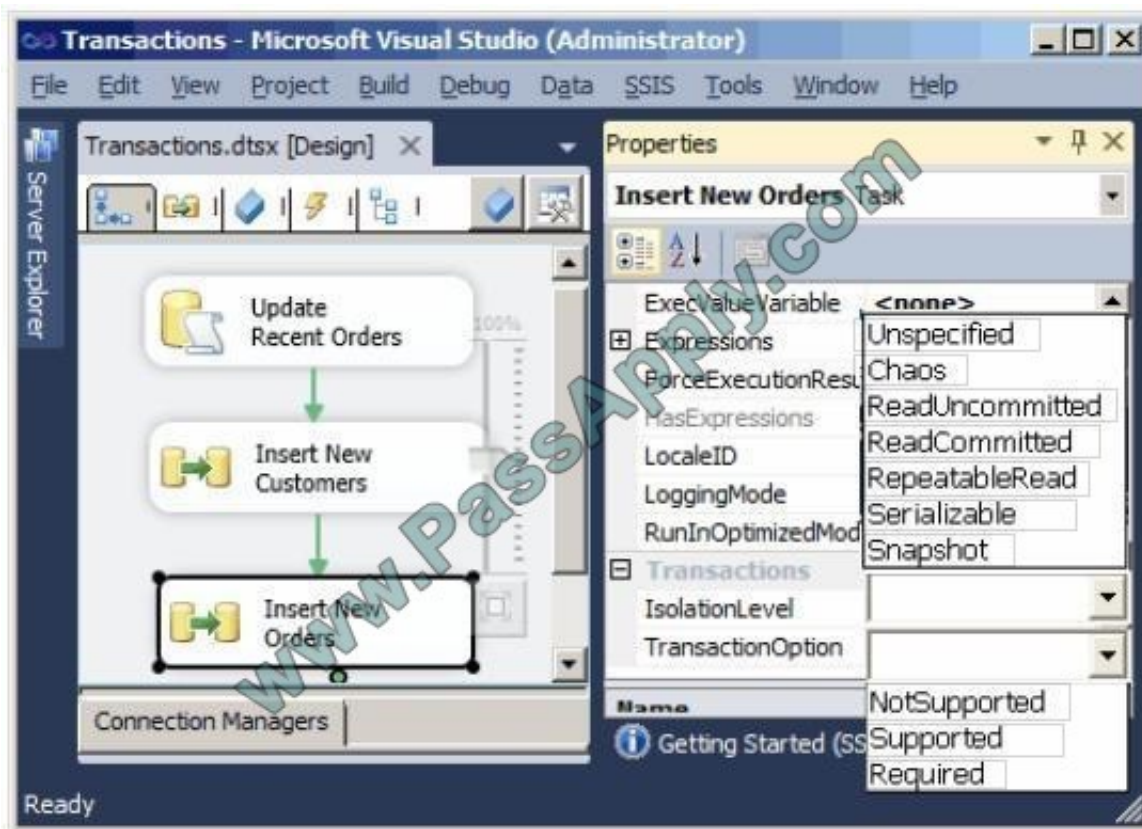
Concurrency should be maximized, while only reading committed transactions.

If the task fails, only that task needs to be rolled back.

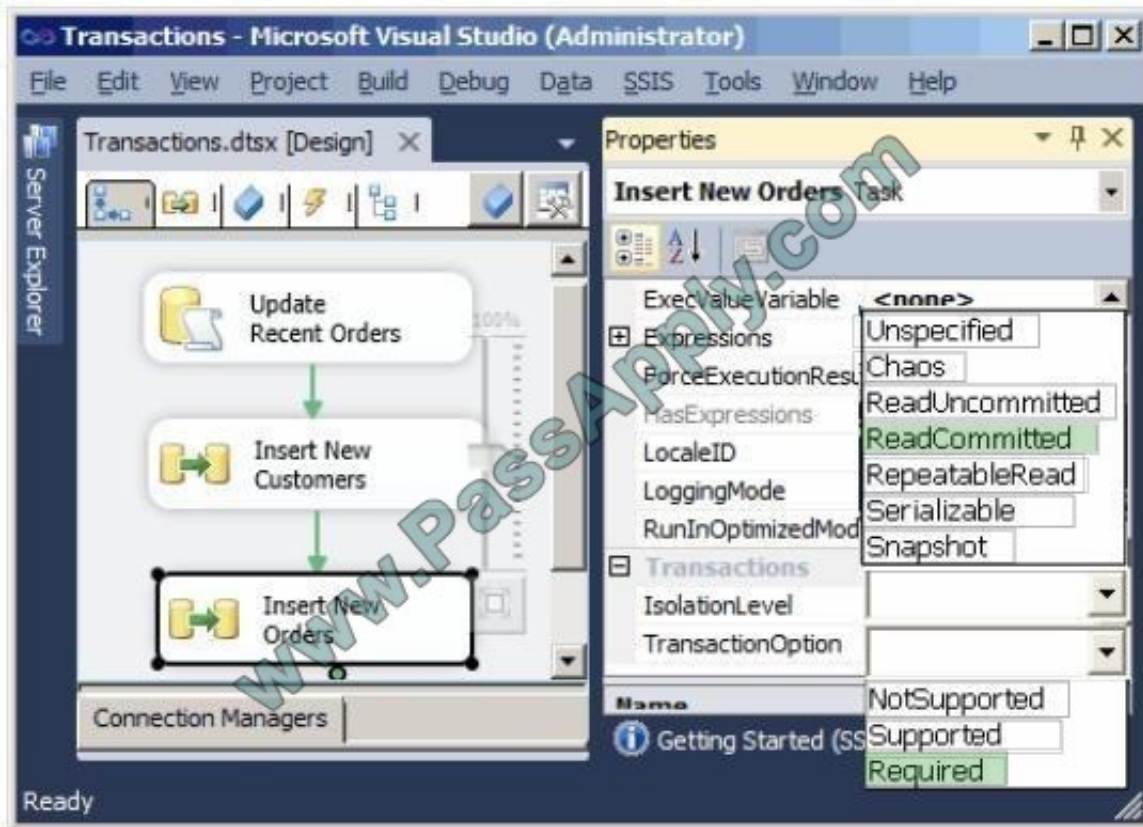
You need to configure the Insert New Orders Data Flow task to meet the requirements.

How should you configure the transaction properties? To answer, select the appropriate setting or settings in the answer area.

Hot Area: Hot Area:



Correct Answer:



#### QUESTION 4

You administer a SQL Server 2012 database instance.

You need to configure the SQL Server Database Engine service on a failover cluster.

- A. a domain user
- B. the SQLBrowser account
- C. the BUILTIN\SYSTEM account
- D. a local user with Run as Service permissions

Correct Answer: A

#### QUESTION 5

You are a database administrator for a Microsoft SQL Server 2012 database named AdventureWorks2012.



```
01 CREATE AVAILABILITY GROUP Group1
02 FOR DATABASE AdventureWorks2012
03 REPLICA ON 'SecondaryServer'
04 WITH (
05     ENDPOINT_URL = 'TCP://SecondaryServer:5022',
06     ...
07 );
```

You need to implement an AlwaysOnAvailability Group that will meet the following conditions:

Production transactions should be minimally affected.

The secondary server should allow reporting queries to be performed. If the primary server goes offline, the secondary server should not automatically take over.

Which Transact-SQL statement should you insert at line 06?

- A. 

```
AVAILABILITY_MODE = ASYNCHRONOUS_COMMIT,
FAILOVER_MODE = MANUAL,
SECONDARY_ROLE (
    ALLOW_CONNECTIONS = YES,
    READ_ONLY_ROUTING_URL = 'TCP://SecondaryServer:1433')
```
- B. 

```
AVAILABILITY_MODE = ASYNCHRONOUS_COMMIT,
FAILOVER_MODE = MANUAL,
SECONDARY_ROLE (
    ALLOW_CONNECTIONS = READ_ONLY,
    READ_ONLY_ROUTING_URL = 'TCP://SecondaryServer:1433'),
PRIMARY_ROLE (
    ALLOW_CONNECTIONS = MANUAL_ONLY,
    READ_ONLY_ROUTING_LIST = NONE)
```
- C. 

```
AVAILABILITY_MODE = SYNCHRONOUS_COMMIT,
FAILOVER_MODE = MANUAL,
SECONDARY_ROLE (
    ALLOW_CONNECTIONS = READ_ONLY,
    READ_ONLY_ROUTING_URL = 'TCP://SecondaryServer:1433'),
PRIMARY_ROLE (
    ALLOW_CONNECTIONS = READ_WRITE,
    READ_ONLY_ROUTING_LIST = NONE)
```
- D. 

```
AVAILABILITY_MODE = ASYNCHRONOUS_COMMIT,
FAILOVER_MODE = MANUAL,
SECONDARY_ROLE (
    ALLOW_CONNECTIONS = READ_ONLY,
    READ_ONLY_ROUTING_URL = 'TCP://SecondaryServer:1433')
```

A. B. C. D.

Correct Answer: A



To Read the [Whole Q&As](#), please purchase the [Complete Version](#) from [Our website](#).

## Try our product !

100% Guaranteed Success  
100% Money Back Guarantee  
365 Days Free Update  
Instant Download After Purchase  
24x7 Customer Support  
Average 99.9% Success Rate  
More than 800,000 Satisfied Customers Worldwide  
Multi-Platform capabilities - [Windows](#), [Mac](#), [Android](#), [iPhone](#), [iPod](#), [iPad](#), [Kindle](#)

We provide exam PDF and VCE of Cisco, Microsoft, IBM, CompTIA, Oracle and other IT Certifications. You can view Vendor list of All Certification Exams offered:

<https://www.passapply.com/allproducts>

## Need Help

Please provide as much detail as possible so we can best assist you.  
To update a previously submitted ticket:



 <p><b>One Year Free Update</b> Free update is available within One Year after your purchase. After One Year, you will get 50% discounts for updating. And we are proud to boast a 24/7 efficient Customer Support system via Email.</p>	 <p><b>Money Back Guarantee</b> To ensure that you are spending on quality products, we provide 100% money back guarantee for 30 days from the date of purchase.</p>	 <p><b>Security &amp; Privacy</b> We respect customer privacy. We use McAfee's security service to provide you with utmost security for your personal information &amp; peace of mind.</p>
---	---	--

Any charges made through this site will appear as Global Simulators Limited.  
All trademarks are the property of their respective owners.  
Copyright © passapply, All Rights Reserved.