



70-458^{Q&As}

Transition Your MCTS on SQL Server 2008 to MCSA: SQL Server 2012, Part 2





Pass Microsoft 70-458 Exam with 100% Guarantee

Free Download Real Questions & Answers **PDF** and **VCE** file from:

<https://www.passapply.com/70-458.html>

100% Passing Guarantee
100% Money Back Assurance

Following Questions and Answers are all new published by Microsoft Official Exam Center

-  **Instant Download** After Purchase
-  **100% Money Back** Guarantee
-  **365 Days** Free Update
-  **800,000+** Satisfied Customers





QUESTION 1

Note: This question is part of a series of questions that use the same or similar answer choices. An answer choice may be correct for more than one question in the series. Each question is independent of the other questions in this series. Information and details provided in a question apply only to that question.

You are developing a SQL Server Integration Services (SSIS) project that copies a large amount of rows from a Windows Azure SQL Database database. The project uses the PackageDeployment Model. This project is deployed to SQL Server on a test server.

You need to ensure that the project is deployed to the SSIS catalog on the production server.

- A. Add an OnError event handler to the SSIS project.
- B. use an msi file to deploy the package on the server.
- C. Open a command prompt and run the gacutil command.
- D. Open a command prompt and run the dtutil /copy command.
- E. Open a command prompt and run the dtexec /rep /conn command.
- F. Open a command prompt and run the dtexec /dumperror /conn command.
- G. Open a command prompt and execute the package by using the SQL Log provider and running the dtexecui.exe utility.
- H. create a reusable custom logging component and use it in the SSIS project.
- I. Configure the SSIS solution to use the Project Deployment Model.
- J. Configure the output of a component in the package data flow to use a data tap.
- K. Run the dtutil command to deploy the package to the SSIS catalog and store the configuration in SQL Server.

Correct Answer: I

QUESTION 2

You administer a Windows 2008 server hosting an instance of Microsoft SQL Server 2012 Standard Edition. The server hosts a database named Orders.

Users report that a query that filters on OrderDate is taking an exceptionally long time. You discover that an index named IX_OrderDate on the CustomerOrder table is heavily fragmented. You need to improve the performance of the IX_OrderDate index. The index should remain online during the operation.

- A. ALTER INDEX IX_OrderDate ON CustomerOrder ENABLE
- B. ALTER INDEX IX_OrderDate ON CustomerOrder REBUILD
- C. ALTER INDEX IX_OrderDate ON CustomerOrder REORGANIZE
- D. ALTER INDEX IX_OrderDate ON CustomerOrder DISABLE



A. B. C. D.

Correct Answer: C

QUESTION 3

You are developing a SQL Server Integration Services (SSIS) package to implement an incremental data load strategy. The package reads data from a source system that uses the SQL Server change data capture (CDC) feature.

You have added a CDC Source component to the data flow to read changed data from the source system.

You need to add a data flow transformation to redirect rows for separate processing of insert, update, and delete operations.

- A. Merge Join
- B. DQS Cleansing
- C. Pivot
- D. CDC Splitter

Correct Answer: D

QUESTION 4

You administer a Microsoft SQL Server 2012 database.

The database contains a table that has the following definition:

```
CREATE TABLE [Sales].[Customer] (  
    [CustomerID] int NOT NULL,  
    [CustomerName] nvarchar(50) NOT NULL,  
    [TerritoryID] int NULL,  
    [LastContactDate] datetimeoffset NULL,  
    [CustomerType] nchar(1) NOT NULL,  
    [Notes] varchar(250) NULL  
)
```

You want to export data from the table to a flat file by using the SQL Server Import and Export Wizard.

You need to ensure that the following requirements are met:

The first row of the file contains the first row of data.

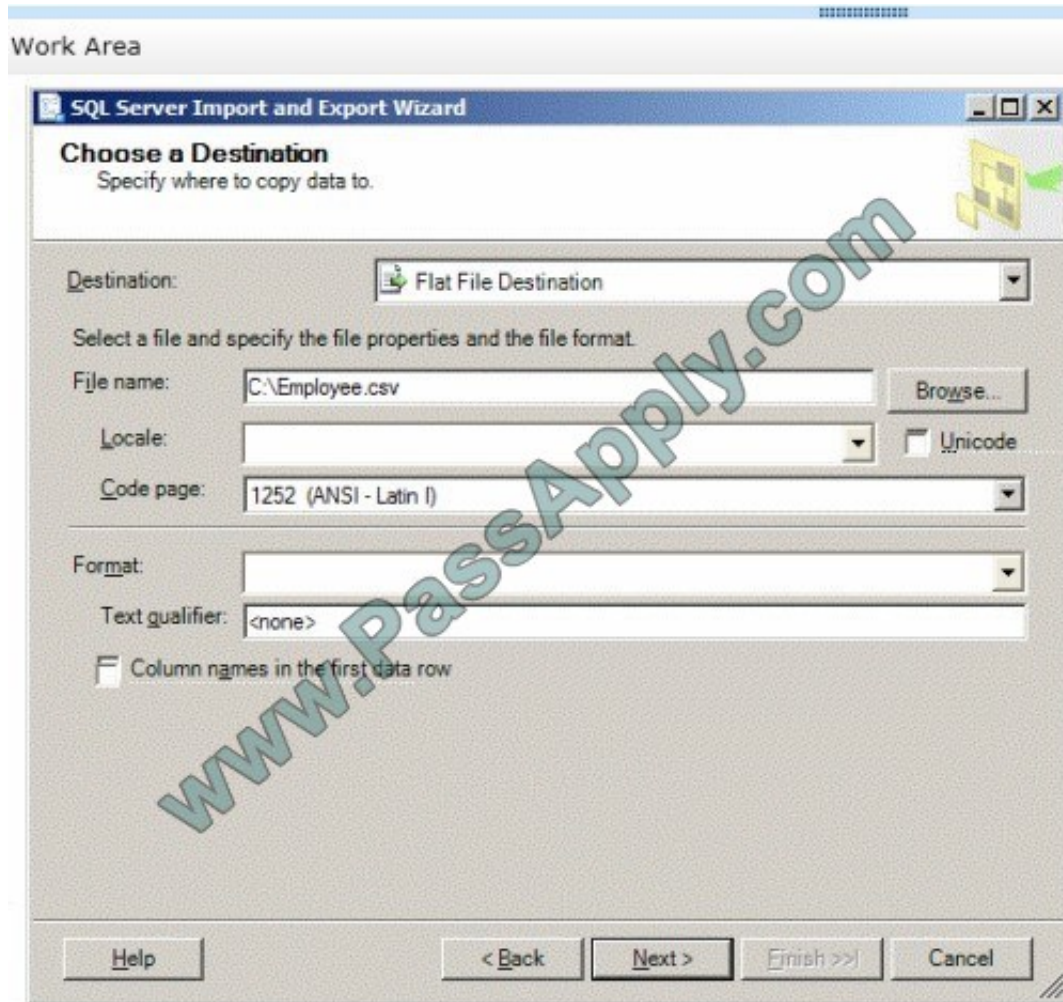


Each record is of the same length.

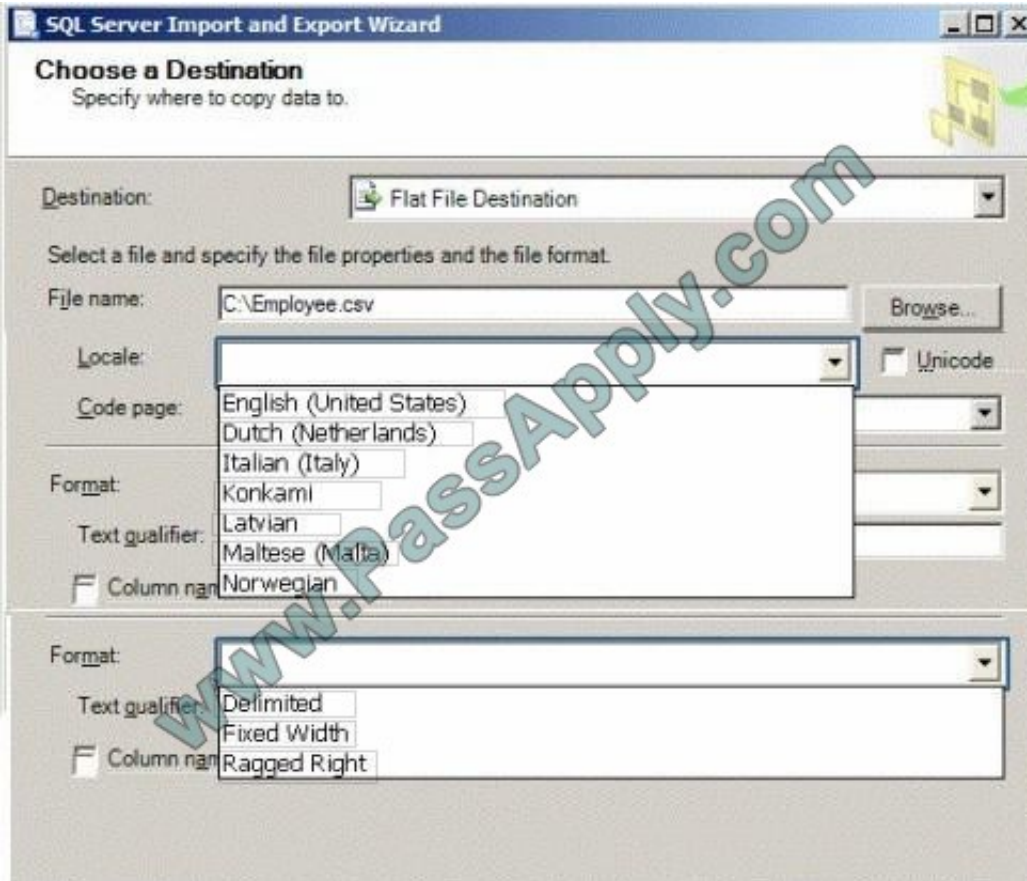
The date follows the U.S. date format.

The file supports international characters.

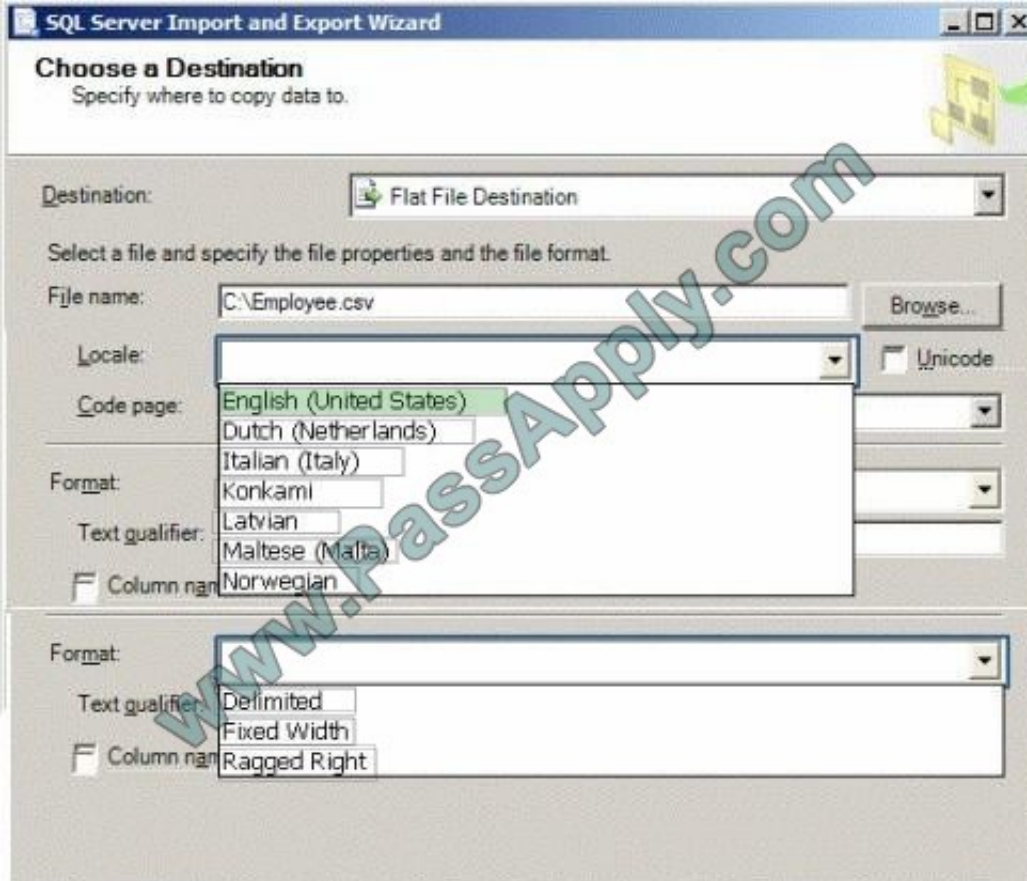
What should you do? (To answer, configure the appropriate option or options in the dialog box in the answer area.)



Hot Area:



Correct Answer:





Select a file and specify the file properties and the file format.

File name:

Locale: Unicode

Code page:

Format:

Text qualifier:

Column names in the first data row

QUESTION 5

You are developing a SQL Server Integration Services (SSIS) package. The package contains a user-defined variable named @Queue which has an initial value of 10.

The package control flow contains many tasks that must repeat execution until the @Queue variable equals 0.

You need to enable the tasks to be grouped together for repeat execution.

Which item should you add to the package? (To answer, select the appropriate item in the answer area.)

Hot Area:



Correct Answer:



[70-458 VCE Dumps](#)

[70-458 Exam Questions](#)

[70-458 Braindumps](#)



To Read the [Whole Q&As](#), please purchase the [Complete Version](#) from [Our website](#).

Try our product !

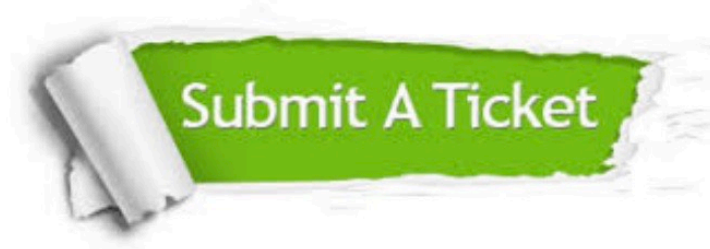
100% Guaranteed Success
100% Money Back Guarantee
365 Days Free Update
Instant Download After Purchase
24x7 Customer Support
Average 99.9% Success Rate
More than 800,000 Satisfied Customers Worldwide
Multi-Platform capabilities - [Windows](#), [Mac](#), [Android](#), [iPhone](#), [iPod](#), [iPad](#), [Kindle](#)

We provide exam PDF and VCE of Cisco, Microsoft, IBM, CompTIA, Oracle and other IT Certifications. You can view Vendor list of All Certification Exams offered:

<https://www.passapply.com/allproducts>

Need Help

Please provide as much detail as possible so we can best assist you.
To update a previously submitted ticket:



 <p>One Year Free Update Free update is available within One Year after your purchase. After One Year, you will get 50% discounts for updating. And we are proud to boast a 24/7 efficient Customer Support system via Email.</p>	 <p>Money Back Guarantee To ensure that you are spending on quality products, we provide 100% money back guarantee for 30 days from the date of purchase.</p>	 <p>Security & Privacy We respect customer privacy. We use McAfee's security service to provide you with utmost security for your personal information & peace of mind.</p>
---	---	--

Any charges made through this site will appear as Global Simulators Limited.
All trademarks are the property of their respective owners.
Copyright © passapply, All Rights Reserved.