



# 70-458<sup>Q&As</sup>

Transition Your MCTS on SQL Server 2008 to MCSA: SQL Server 2012, Part 2

## Pass Microsoft 70-458 Exam with 100% Guarantee

Free Download Real Questions & Answers **PDF** and **VCE** file from:

<https://www.passapply.com/70-458.html>

100% Passing Guarantee  
100% Money Back Assurance

Following Questions and Answers are all new published by Microsoft Official Exam Center

-  **Instant Download** After Purchase
-  **100% Money Back** Guarantee
-  **365 Days** Free Update
-  **800,000+** Satisfied Customers





### QUESTION 1

You are developing a SQL Server Integration Services (SSIS) project by using the Project Deployment Model.

The project is deployed to a single SSIS catalog, and transfers data to and from multiple databases hosted on SQL Server.

The project must be configured to be able to export data to and from five different production servers that run SQL Server 2012. Each target server requires different values for connection strings and parameters in the SSIS project.

You need to meet the requirements by using the least amount of administrative effort.

- A. For each target server, create separate Environments in the SSIS catalog of the host SQL Server SSIS instance. Select the appropriate Environment at package execution time.
- B. Create one SSIS catalog Environment. Change the values of each Environment variable at package execution time.
- C. For each target server, create separate registry entry configurations. Select the registry entry at package execution time.
- D. For each target server, create a separate XML configuration file. Select the XML configuration file at package execution time.

Correct Answer: A

---

### QUESTION 2

You are designing a data warehouse that uses SQL Server 2012. You are preparing to update the contents of a fact table that contains a non-clustered columnstore index.

You need to run an update statement against the table.

- A. Change the recovery model of the database to Bulk-logged.
- B. Pause the columnstore index.
- C. Change the non-clustered columnstore index to be a clustered columnstore index.
- D. Drop the columnstore index.

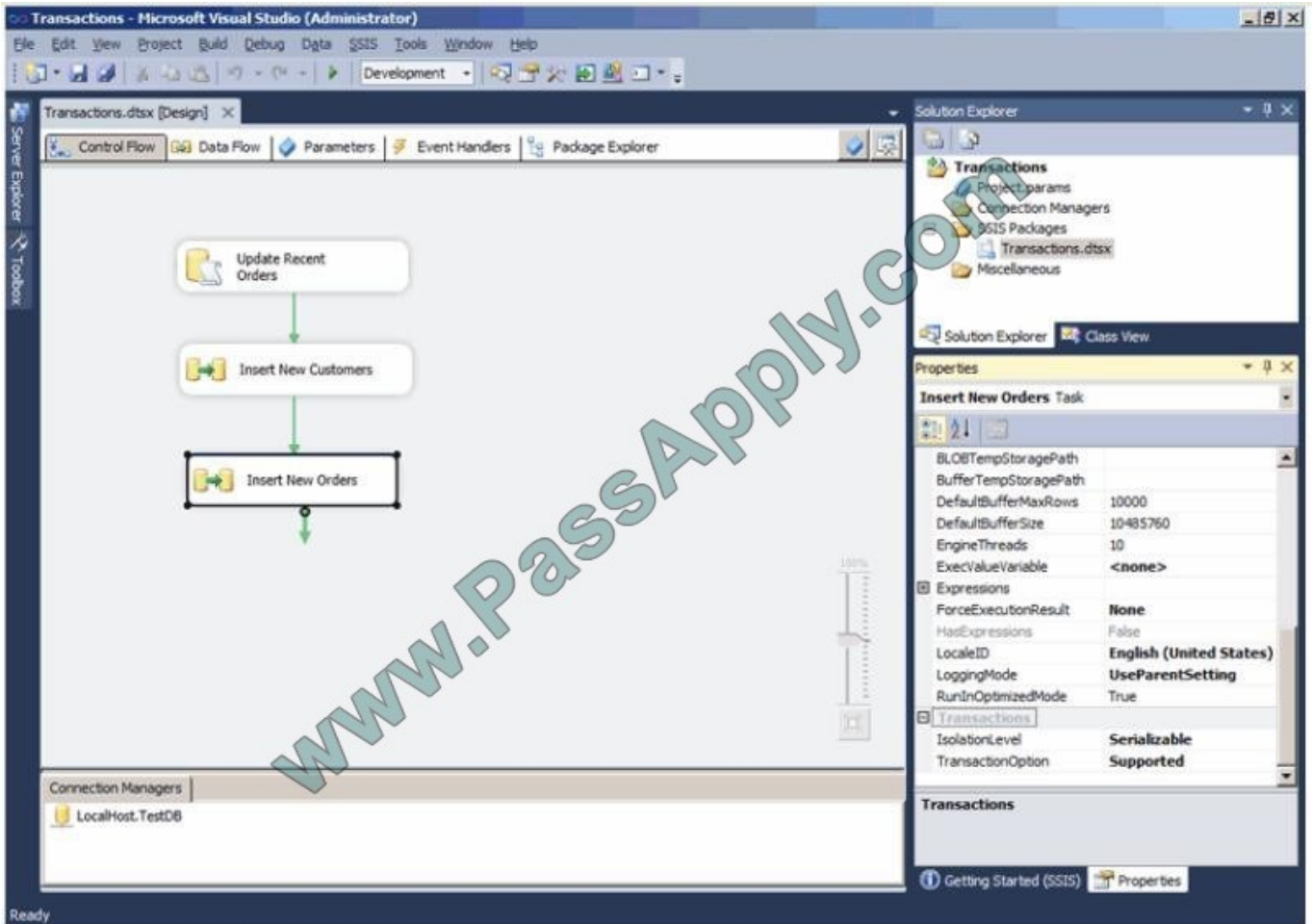
Correct Answer: D

---

### QUESTION 3

You are designing a package control flow. The package moves sales order data from a Windows Azure SQL Database transactional database to an on-premise reporting database. The package will run several times a day, while new sales orders are being added to the transactional database.

The current design of the package control flow is shown in the answer area. (Click the Exhibit button.)



The Insert New Orders Data Flow task must meet the following requirements:

Usage of the tempdb database should not be impacted.

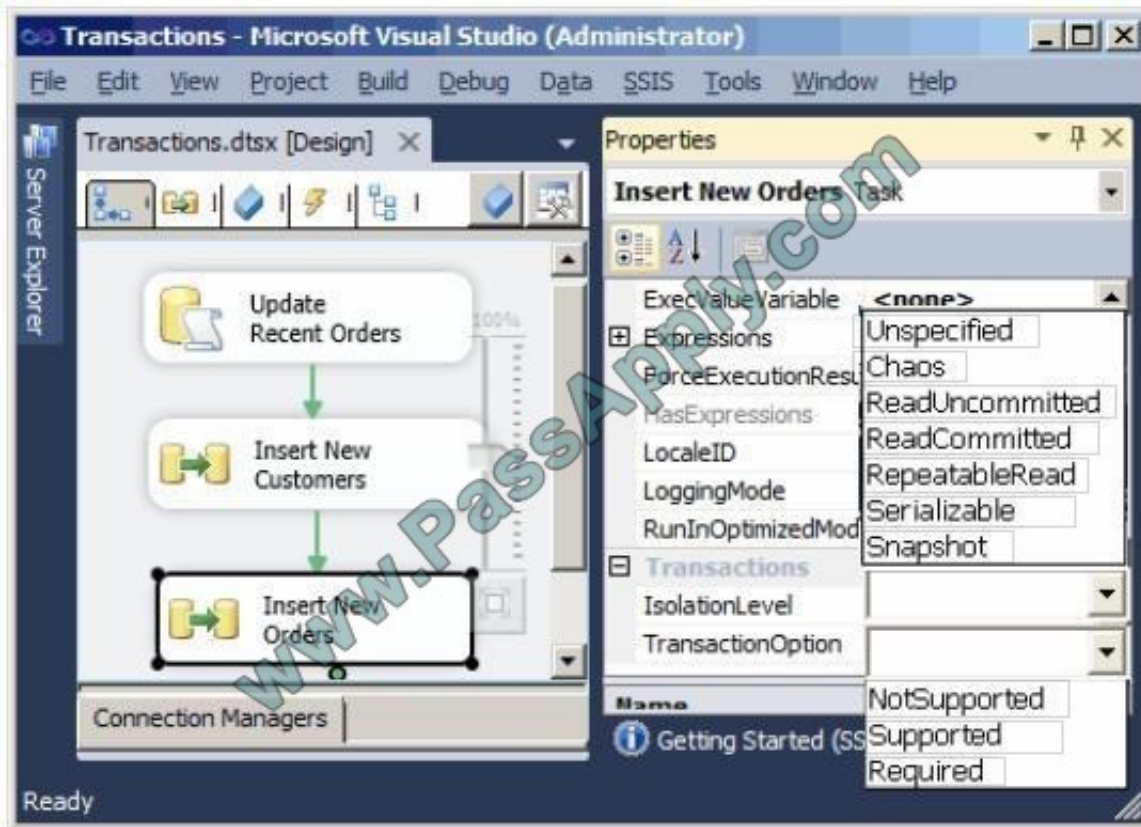
Concurrency should be maximized, while only reading committed transactions.

If the task fails, only that task needs to be rolled back.

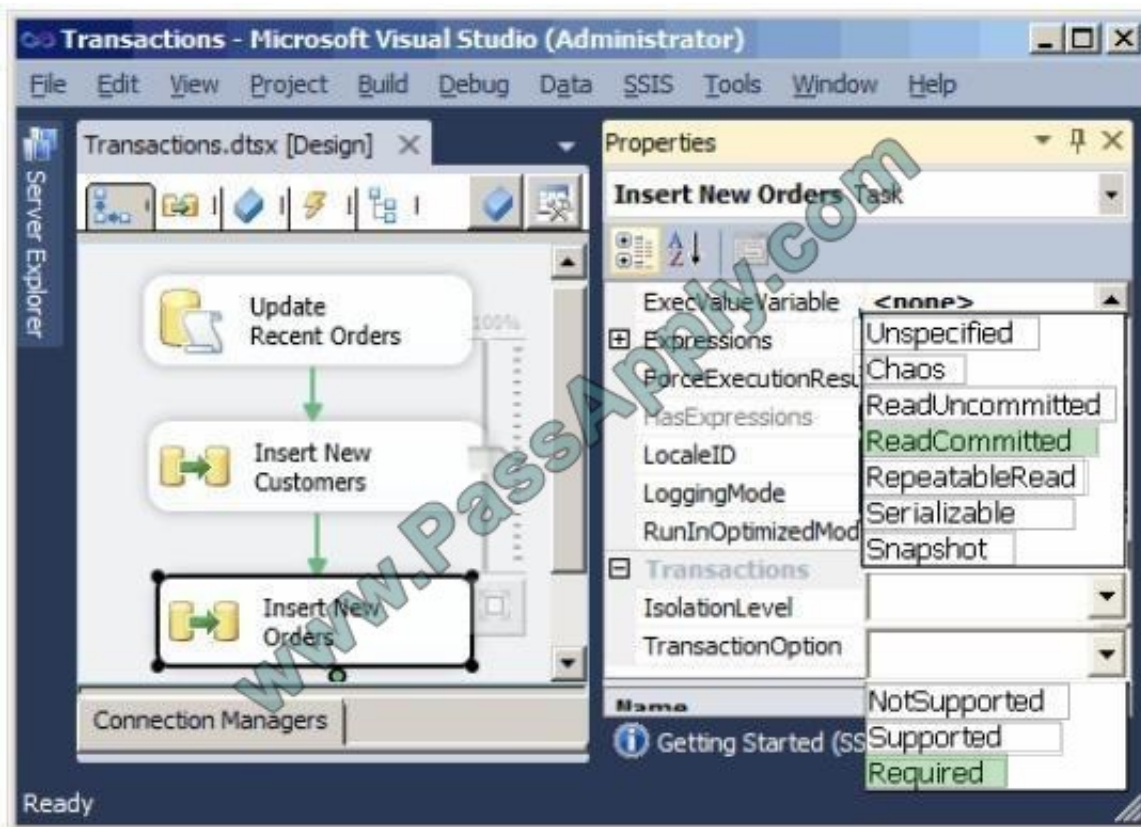
You need to configure the Insert New Orders Data Flow task to meet the requirements.

How should you configure the transaction properties? To answer, select the appropriate setting or settings in the answer area.

Hot Area: Hot Area:



Correct Answer:





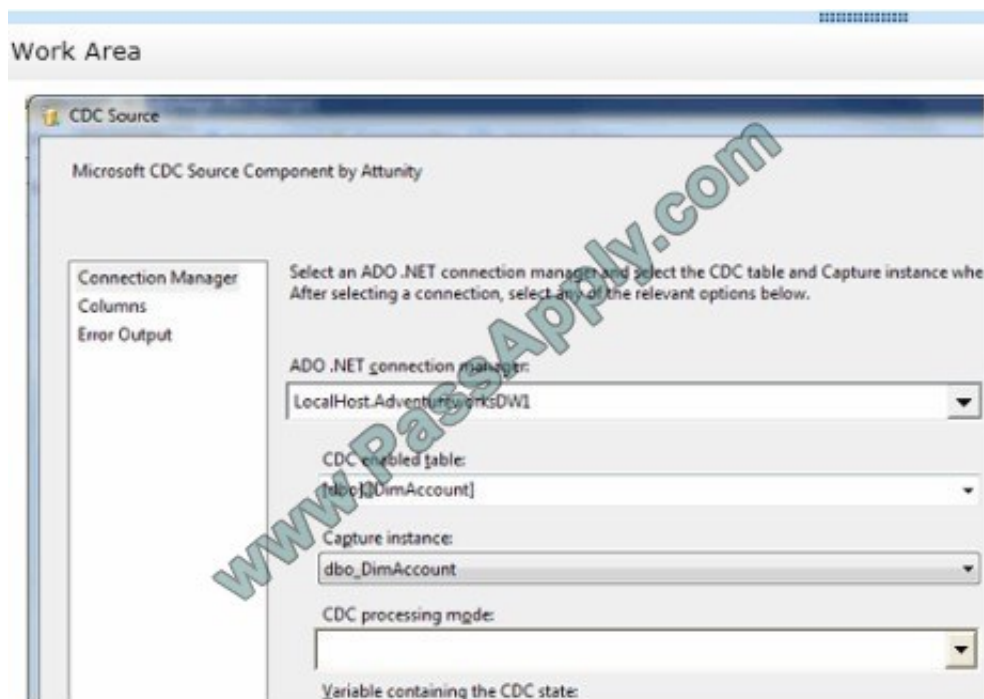
#### QUESTION 4

You are developing a SQL Server Integration Services (SSIS) package. The data source for the data flow task is a table that has been configured as a change data capture (CDC) table. You are using a CDC Source component to obtain the CDC data.

The data source will be polled once per hour. The data is updated with multiple important status changes per minute.

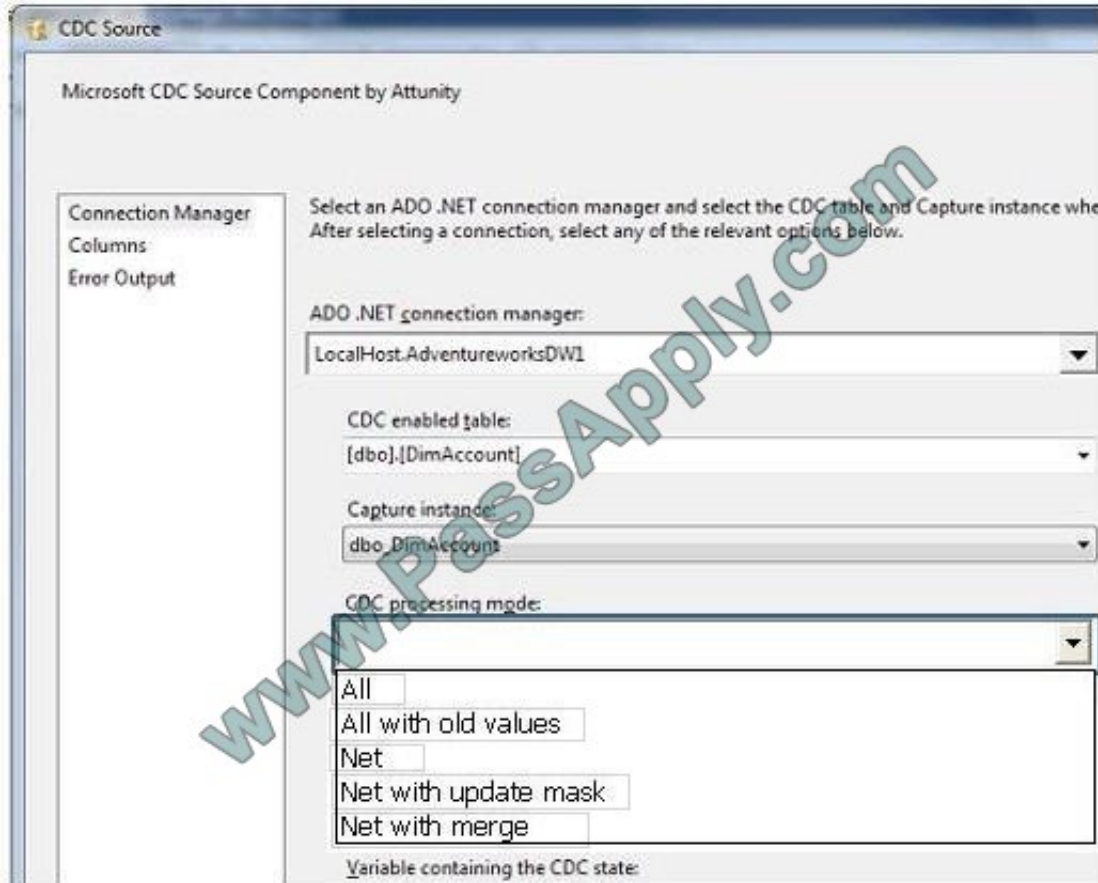
For each captured data change, the before and after values must be included. You need to configure the CDC Source component.

Which CDC processing mode should you select? (To answer, configure the appropriate option in the dialog box in the answer area.)

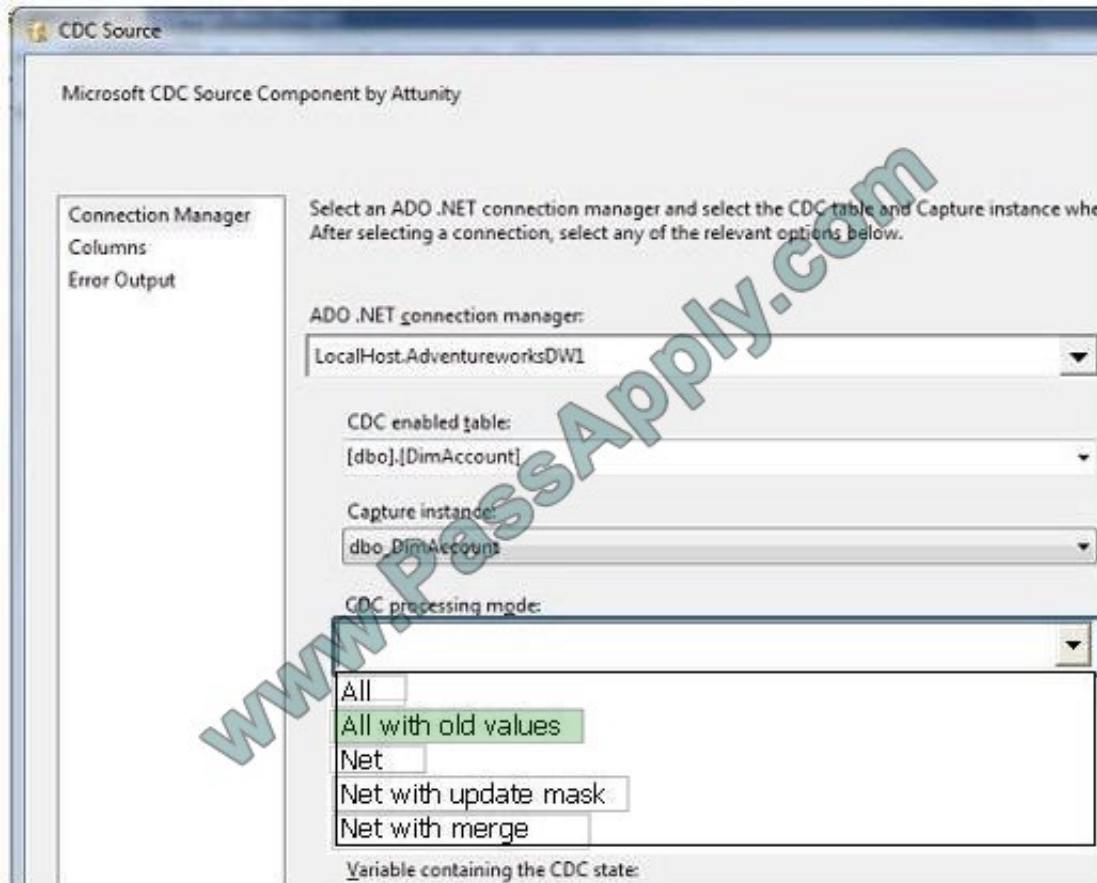


Hot Area:





Correct Answer:



### QUESTION 5

You are designing a data warehouse with two fact tables. The first table contains sales per month and the second table contains orders per day.

Referential integrity must be enforced declaratively.

You need to design a solution that can join a single time dimension to both fact tables.

- A. Create a time dimension that can join to both fact tables at their respective granularity.
- B. Merge the fact tables.
- C. Create a time mapping table.
- D. Join the two fact tables.

Correct Answer: B



To Read the [Whole Q&As](#), please purchase the [Complete Version](#) from [Our website](#).

## Try our product !

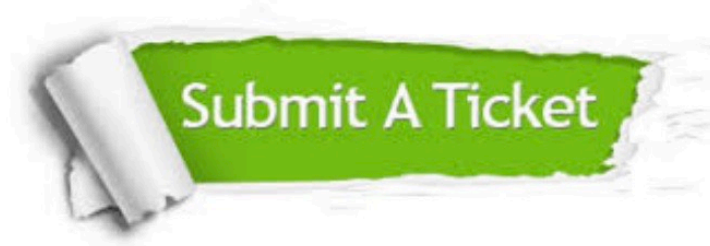
100% Guaranteed Success  
100% Money Back Guarantee  
365 Days Free Update  
Instant Download After Purchase  
24x7 Customer Support  
Average 99.9% Success Rate  
More than 800,000 Satisfied Customers Worldwide  
Multi-Platform capabilities - [Windows](#), [Mac](#), [Android](#), [iPhone](#), [iPod](#), [iPad](#), [Kindle](#)

We provide exam PDF and VCE of Cisco, Microsoft, IBM, CompTIA, Oracle and other IT Certifications. You can view Vendor list of All Certification Exams offered:

<https://www.passapply.com/allproducts>

## Need Help

Please provide as much detail as possible so we can best assist you.  
To update a previously submitted ticket:



 <p><b>One Year Free Update</b> Free update is available within One Year after your purchase. After One Year, you will get 50% discounts for updating. And we are proud to boast a 24/7 efficient Customer Support system via Email.</p>	 <p><b>Money Back Guarantee</b> To ensure that you are spending on quality products, we provide 100% money back guarantee for 30 days from the date of purchase.</p>	 <p><b>Security &amp; Privacy</b> We respect customer privacy. We use McAfee's security service to provide you with utmost security for your personal information &amp; peace of mind.</p>
---	---	--

Any charges made through this site will appear as Global Simulators Limited.  
All trademarks are the property of their respective owners.  
Copyright © passapply, All Rights Reserved.