



70-412^{Q&As}

Configuring Advanced Windows Server 2012 Services

Pass Microsoft 70-412 Exam with 100% Guarantee

Free Download Real Questions & Answers **PDF** and **VCE** file from:

<https://www.passapply.com/70-412.html>

100% Passing Guarantee
100% Money Back Assurance

Following Questions and Answers are all new published by Microsoft
Official Exam Center

- ⚙ **Instant Download** After Purchase
- ⚙ **100% Money Back** Guarantee
- ⚙ **365 Days** Free Update
- ⚙ **800,000+** Satisfied Customers





QUESTION 1

Your network contains an Active Directory domain named contoso.com. The domain contains two Active Directory sites named Site1 and Site2.

You need to configure the replication between the sites to occur by using change notification.

Which attribute should you modify?

Hot Area:

DEFAULTIPSITELINK Properties

Attributes:

Attribute	Value
options	<not set>
otherWellKnownObjects	<not set>
partialAttributeDeletionList	<not set>
partialAttributeSet	<not set>
proxiedObjectName	<not set>
proxyAddresses	<not set>
replInterval	15
replPropertyMetaData	AttID Ver Loc.USN Org.I
replUpToDateVector	<not set>
repsFrom	<not set>
repsTo	<not set>
revision	<not set>
schedule	<not set>
showInAdvancedViewOnly	TRUE

View Filter

OK Cancel Apply Help

Correct Answer:



DEFAULTIPSITELINK Properties

Attributes:

Attribute	Value
options	<not set>
otherWellKnownObjects	<not set>
partialAttributeDeletionList	<not set>
partialAttributeSet	<not set>
proxiedObjectName	<not set>
proxyAddresses	<not set>
replInterval	15
replPropertyMetaData	AttID Ver Loc.USN
replUpToDateVector	<not set>
repsFrom	<not set>
repsTo	<not set>
revision	<not set>
schedule	<not set>
showInAdvancedViewOnly	TRUE

View Filter

OK Cancel Apply Help

Active Directory Replication Change Notification

- * Right-click the site link object for the sites for which you want to enable change notification, and then click Properties.
- * In the Select a property to view box, select options.



* In the Select a property to view box, select options.

Attribute Editor Security

Attributes:

Attribute	Value
lastKnownParent	<not set>
mS-DS-ConsistencyC...	<not set>
mS-DS-ConsistencyG...	<not set>
msDS-LastKnownRDN	<not set>
msDS-NcType	<not set>
name	Texas-Canberra
objectCategory	CN=Site-Link,CN=Schema,CN=Configuration
objectClass	top; siteLink
objectGUID	ba1c7826b9b4-4818-ad44-7e6035ff619f
objectVersion	<not set>
options	<not set>
otherWellKnownObje...	<not set>
partialAttributeDeletio...	<not set>
partialAttributeSet	<not set>

Edit Filter

OK Cancel Apply Help

* In the Edit Attribute box, if the Value(s) box shows <not set>, type 1 in the Edit Attribute box

Attribute Editor Security

Attributes:

Attribute	Value
lastKnownParent	<not set>
mS-DS-ConsistencyC...	<not set>
mS-DS-ConsistencyG...	<not set>
msDS-LastKnownRDN	<not set>
msDS-NcType	<not set>
name	Texas-Canberra
objectCategory	CN=Site-Link,CN=Schema,CN=Configuration
objectClass	top; siteLink
objectGUID	ba1c7826b9b4-4818-ad44-7e6035ff619f
objectVersion	<not set>
options	0x1=(USE_NOTIFY)
otherWellKnownObje...	<not set>
partialAttributeDeletio...	<not set>
partialAttributeSet	<not set>

Edit Filter

OK Cancel Apply Help

* Click OK.

Reference: Active Directory Replication: Change Notification & You

QUESTION 66

HOTSPOT



* Click OK.

Reference: Active Directory Replication: Change Notification and You

QUESTION 2

Your network contains an Active Directory domain named contoso.com. The domain contains two servers named Server1 and Server2 that run Windows Server 2012 R2. The servers have the Hyper-V server role installed.

A certification authority (CA) is available on the network.

A virtual machine named vml.contoso.com is replicated from Server1 to Server2. A virtual machine named vm2.contoso.com is replicated from Server2 to Server1.

You need to configure Hyper-V to encrypt the replication of the virtual machines.

Which common name should you use for the certificates on each server?

To answer, configure the appropriate common name for the certificate on each server in the answer area.

Hot Area:

Server name	Common name
-------------	-------------

Server1

server1.contoso.com

server2.contoso.com

vm1.contoso.com

vm2.contoso.com

Server2

server1.contoso.com

server2.contoso.com

vm1.contoso.com

vm2.contoso.com

Correct Answer:

**Server name Common name**

Server1

server1.contoso.com
server2.contoso.com
vm1.contoso.com
vm2.contoso.com

Server2

server1.contoso.com
server2.contoso.com
vm1.contoso.com
vm2.contoso.com**Hyper-V Replica Certificate Requirements**

If you want to use HTTPS, then you will need to create certificates for the hosts/clusters in both the primary and secondary sites.

Reference: Use Hyper-V Replica over HTTPS/SSL: Configuring Certificates.

QUESTION 3

You have a file server named Server1 that runs a Server Core Installation of Windows Server 2012 R2.

You need to ensure that users can access previous versions of files that are shared on Server1 by using the Previous Versions tab.

Which tool should you use?

- A. Diskpart
- B. Wbadmin
- C. Vssadmin
- D. Storrep

Correct Answer: C

The storrep command is installed with File Server Resource Manager and includes subcommands for creating and managing storage reports and storage report tasks, as well as for configuring general administrative options for File Server Resource Manager.



```
C:\Windows\system32>vssadmin
vssadmin 1.1 - Volume Shadow Copy Service administrative command-line tool
(C) Copyright 2001-2012 Microsoft Corp.

Error: Invalid command.

----- Commands Supported -----

Add ShadowStorage      - Add a new volume shadow copy storage association
Create Shadow          - Create a new volume shadow copy
Delete Shadows         - Delete volume shadow copies
Delete ShadowStorage   - Delete volume shadow copy storage associations
List Providers         - List registered volume shadow copy providers
List Shadows           - List existing volume shadow copies
List ShadowStorage     - List volume shadow copy storage associations
List Volumes           - List volumes eligible for shadow copies
List Writers           - List subscribed volume shadow copy writers
Resize ShadowStorage   - Resize a volume shadow copy storage association
Revert Shadow          - Revert a volume to a shadow copy
Query Reverts          - Query the progress of in-progress revert operations.
```

Incorrect Answers:

A: Enables you to back up and restore your operating system, volumes, files, folders, and applications from a command prompt.

B: DiskPart is a text-mode command interpreter that enables you to manage objects (disks, partitions, volumes, or virtual hard disks) by using scripts or direct input from a command prompt.

D: Displays current volume shadow copy backups and all installed shadow copy writers and providers. To view the command syntax for any of the commands in the following table, click the command name.

References: [https://technet.microsoft.com/en-us/library/cc754015\(v=ws.10\).aspx](https://technet.microsoft.com/en-us/library/cc754015(v=ws.10).aspx) [https://technet.microsoft.com/en-us/library/cc770877\(v=ws.10\).aspx](https://technet.microsoft.com/en-us/library/cc770877(v=ws.10).aspx) [https://technet.microsoft.com/en-us/library/cc753567\(v=ws.10\).aspx](https://technet.microsoft.com/en-us/library/cc753567(v=ws.10).aspx) <https://technet.microsoft.com/en-us/library/cc754968.aspx>

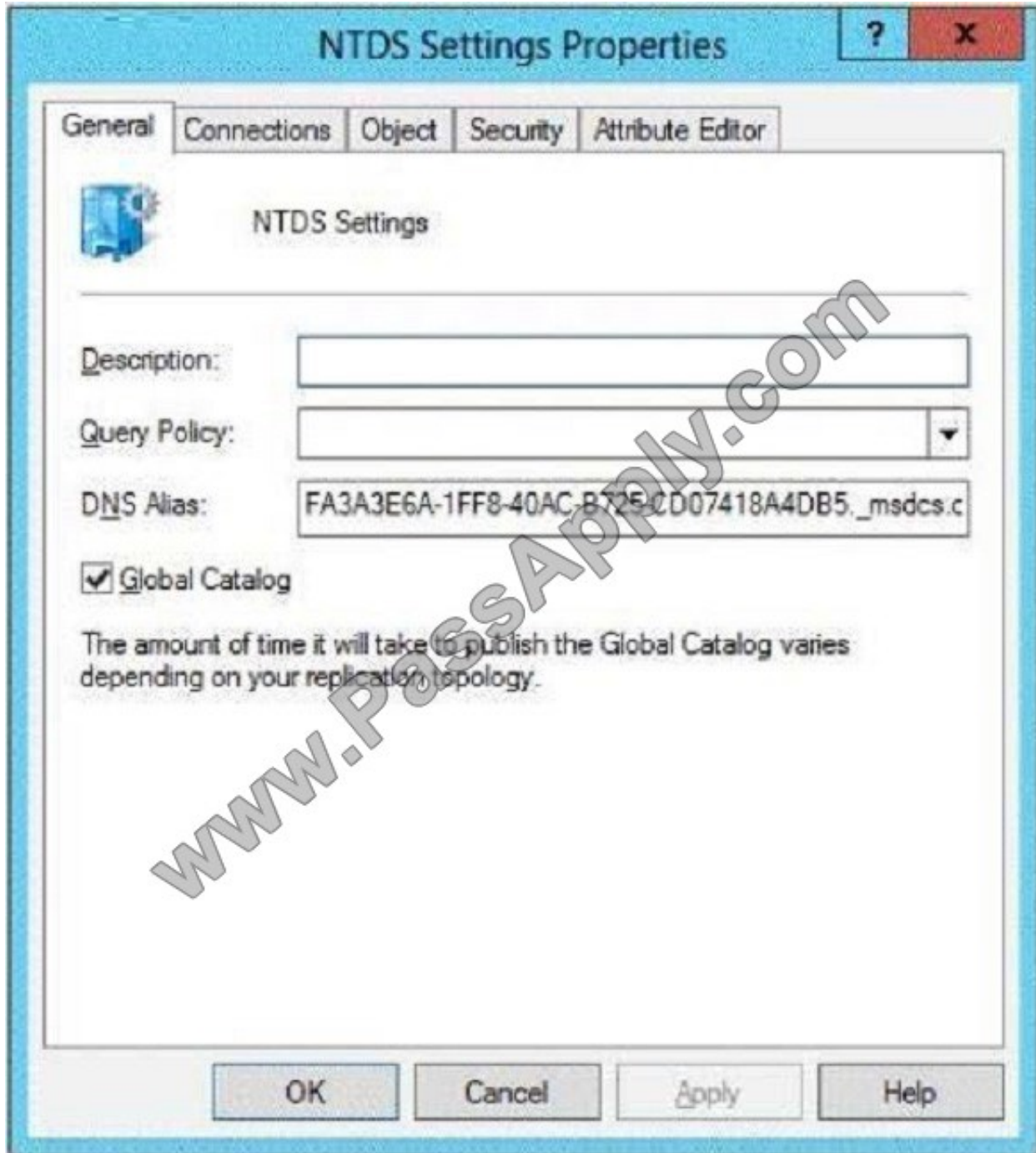
QUESTION 4

Your network contains an Active Directory domain named contoso.com. The domain contains two domain controllers named DC1 and DC2 that run Windows Server 2012 R2.

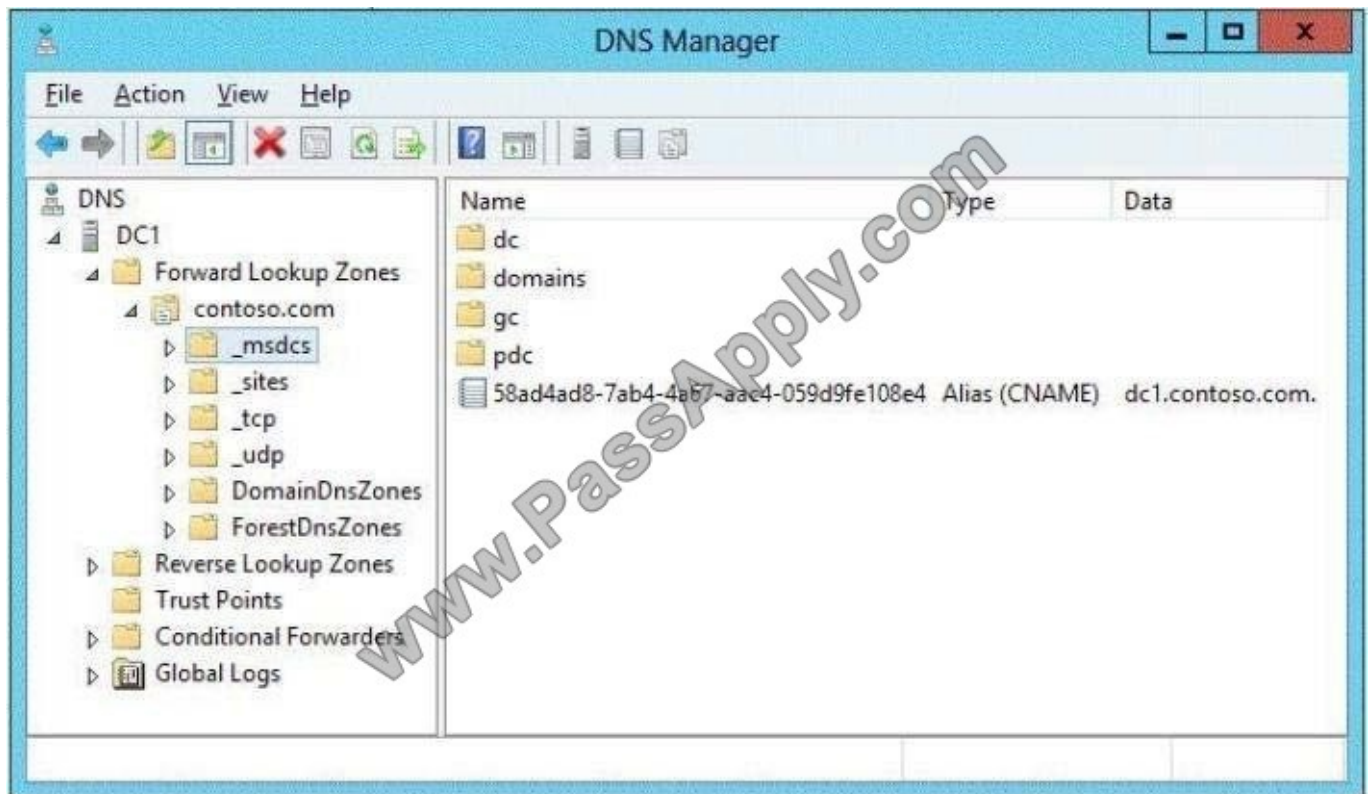
DC1 and DC2 fail to replicate Active Directory information.

You confirm that DC1 and DC2 have network connectivity.

The NTDS Settings of DC2 are configured as shown in the NTDS Settings exhibit. (Click the Exhibit button.)



DNS is configured as shown in the DNS exhibit. (Click the Exhibit button.)



You need to ensure that DC1 and DC2 can replicate immediately.

Which two actions should you perform? (Each correct answer presents part of the solution. Choose two.)

- A. From DC1, restart the Netlogon service.
- B. From DC2, run nltest.exe /sync.
- C. From DC1, run ipconfig /flushdns.
- D. From DC1, run repadmin /syncall.
- E. From DC2, run ipconfig /registerdns.
- F. From DC2, restart the Netlogon service.

Correct Answer: DF

The figure of the DNS configuration can be seen that the alias (CNAME) entry that identifies DC2 as a domain controller of the domain certbase.de missing. While ipconfig / registerdns ensures that the IP address of a DNS client in DNS is registered, is restarting the Netlogon service on a domain controller ensures that all entries for the service location (Service Resource Records, SRVs) be the domain controller registered or renewed. After the service location records for DC2 completed or modified, can on one of the two domain controller with a call from repadmin / syncall immediate replication of the Active Directory database are introduced.

QUESTION 5

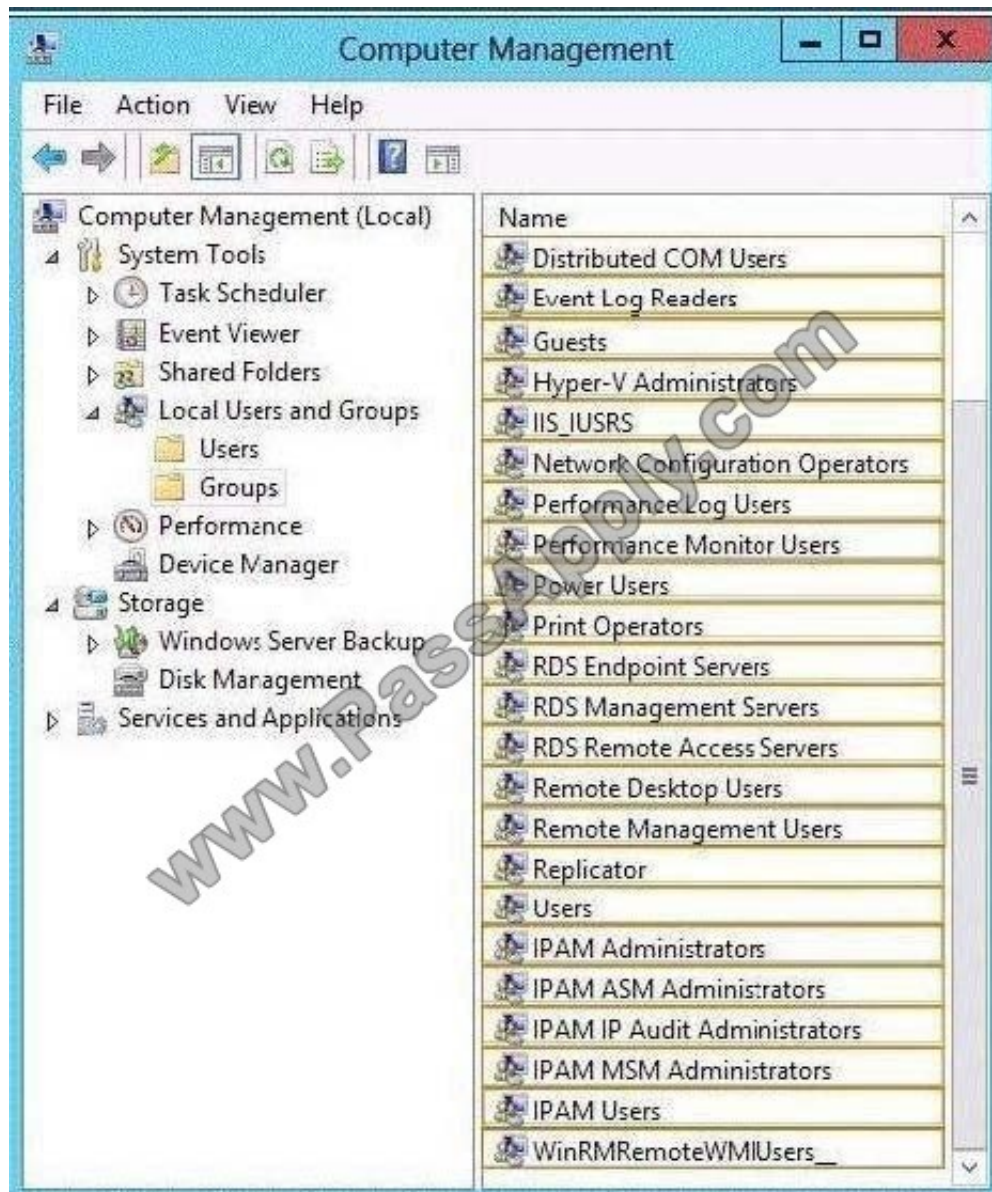
Your network contains an Active Directory domain named contoso.com. The domain contains two servers named Server1 and Server2. Both servers have the IP Address Management (IPAM) Server feature installed.



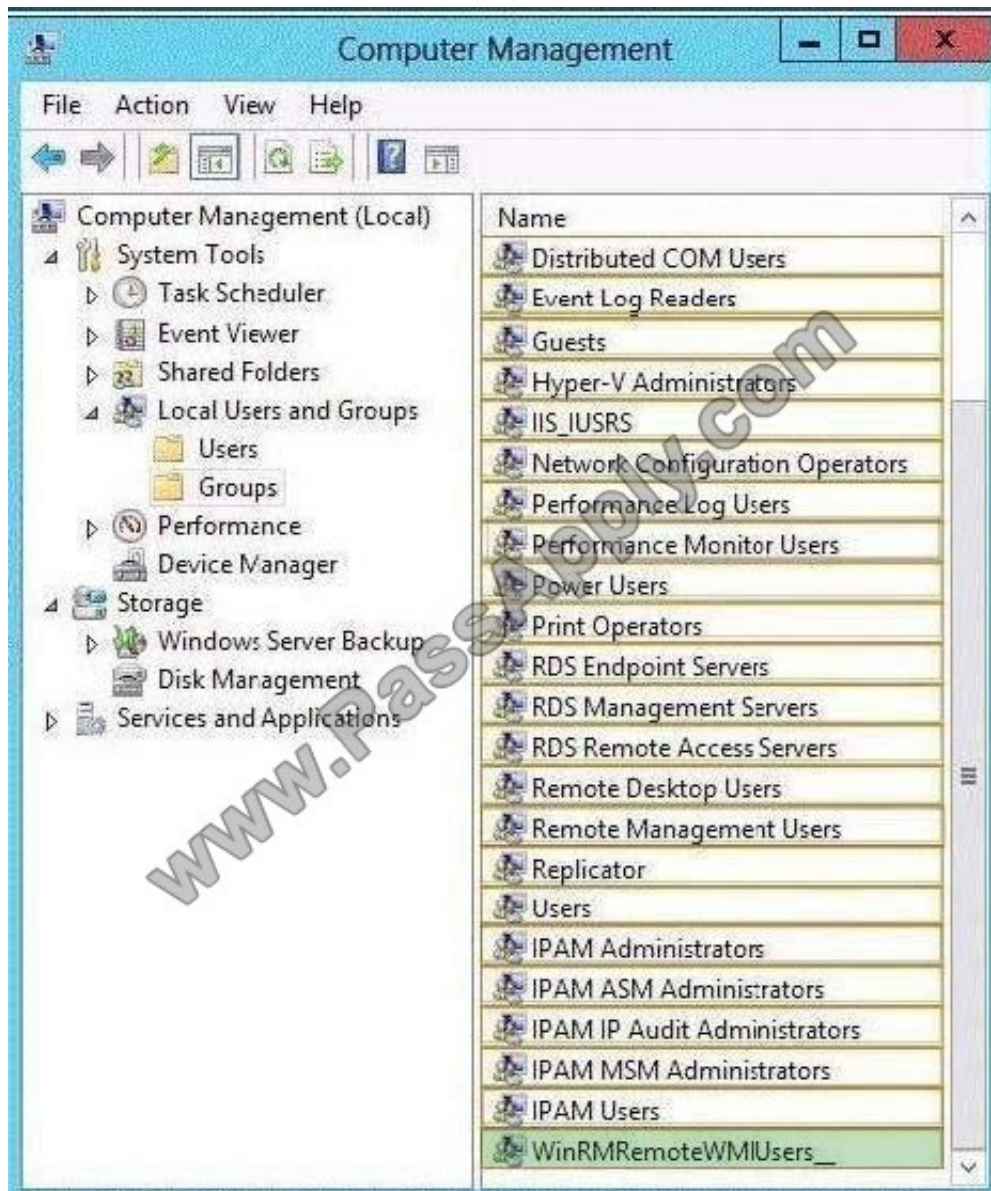
You have a support technician named Tech1. Tech1 is a member of the IPAM Administrators group on Server1 and Server2. You need to ensure that Tech1 can use Server Manager on Server1 to manage IPAM on Server2. To which group

on Server2 should you add Tech1? To answer, select the appropriate group in the answer area.

Hot Area:



Correct Answer:



If you are accessing the IPAM server remotely using Server Manager IPAM client RSAT, then you must be a member of the WinRMRemoteWMIUsers group on the IPAM server, in addition to being a member of the appropriate IPAMsecurity group (or local Administrators group).

References: Understand and Troubleshoot IP Address Management (IPAM) in Windows Server "8" Beta.

[Latest 70-412 Dumps](#)

[70-412 Practice Test](#)

[70-412 Study Guide](#)



To Read the [Whole Q&As](#), please purchase the [Complete Version](#) from [Our website](#).

Try our product !

100% Guaranteed Success

100% Money Back Guarantee

365 Days Free Update

Instant Download After Purchase

24x7 Customer Support

Average 99.9% Success Rate

More than 800,000 Satisfied Customers Worldwide

Multi-Platform capabilities - [Windows](#), [Mac](#), [Android](#), [iPhone](#), [iPod](#), [iPad](#), [Kindle](#)

We provide exam PDF and VCE of Cisco, Microsoft, IBM, CompTIA, Oracle and other IT Certifications.
You can view Vendor list of All Certification Exams offered:

<https://www.passapply.com/allproducts>

Need Help

Please provide as much detail as possible so we can best assist you.

To update a previously submitted ticket:



 One Year Free Update <p>Free update is available within One Year after your purchase. After One Year, you will get 50% discounts for updating. And we are proud to boast a 24/7 efficient Customer Support system via Email.</p>	 Money Back Guarantee <p>To ensure that you are spending on quality products, we provide 100% money back guarantee for 30 days from the date of purchase.</p>	 Security & Privacy <p>We respect customer privacy. We use McAfee's security service to provide you with utmost security for your personal information & peace of mind.</p>
---	---	--

Any charges made through this site will appear as Global Simulators Limited.

All trademarks are the property of their respective owners.

Copyright © passapply, All Rights Reserved.