



70-412^{Q&As}

Configuring Advanced Windows Server 2012 Services

Pass Microsoft 70-412 Exam with 100% Guarantee

Free Download Real Questions & Answers **PDF** and **VCE** file from:

<https://www.passapply.com/70-412.html>

100% Passing Guarantee
100% Money Back Assurance

Following Questions and Answers are all new published by Microsoft
Official Exam Center

-  **Instant Download** After Purchase
-  **100% Money Back** Guarantee
-  **365 Days** Free Update
-  **800,000+** Satisfied Customers





QUESTION 1

Your network contains an Active Directory domain named contoso.com. The domain contains two member servers named Server1 and Server2. All servers run Windows Server 2012 R2.

Server1 and Server2 have the Failover Clustering feature installed. The servers are configured as nodes in a failover cluster named Cluster1.

You add two additional nodes in Cluster1.

You have a folder named Folder1 on Server1 that hosts Application data. Folder1 is a folder target in a Distributed File System (DFS) namespace.

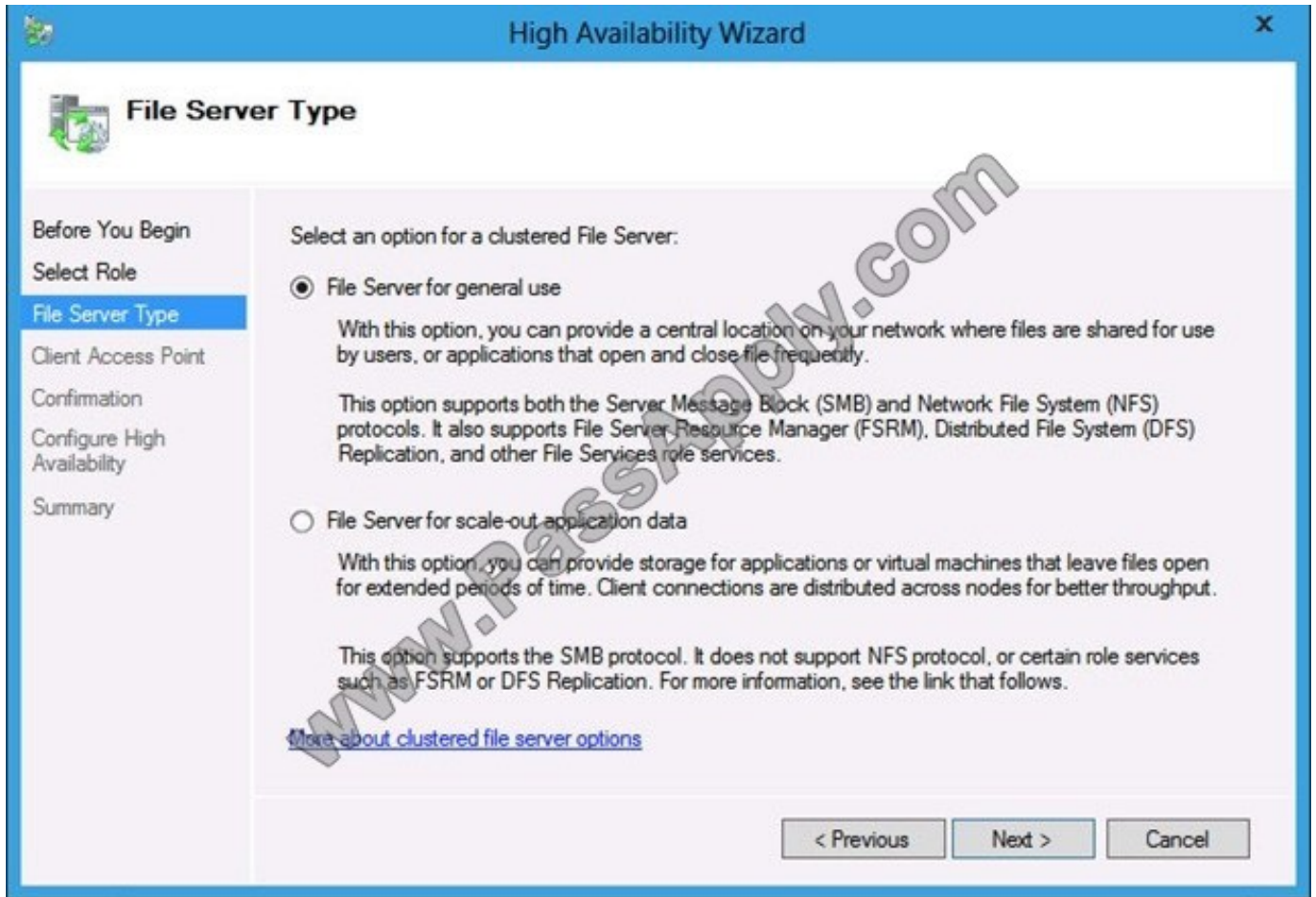
You need to provide highly available access to Folder1. The solution must support DFS Replication to Folder1.

What should you configure?

- A. Affinity-None
- B. Affinity-Single
- C. The cluster quorum settings
- D. The failover settings
- E. A file server for general use
- F. The Handling priority
- G. The host priority
- H. Live migration
- I. The possible owner
- J. The preferred owner
- K. Quick migration
- L. The Scale-Out File Server

Correct Answer: E

File Server for general use Note: You can deploy and configure a clustered file server by using either of the following methods:



*

File Server for general use.

This is the continuation of the clustered file server that has been supported in Windows Server since the introduction of Failover Clustering. This type of clustered file server, and therefore all the shares associated with the clustered file server,

is online on one node at a time. This is sometimes referred to as active-passive or dual-active. File shares associated with this type of clustered file server are called clustered file shares. This is the recommended file server type when

deploying information worker scenarios.

*

Scale-Out File Server for application data

This clustered file server feature was introduced in Windows Server 2012, and it lets you store server application data, such as Hyper-V virtual machine files, on file shares, and obtain a similar level of reliability, availability, manageability, and

high performance that you would expect from a storage area network. All file shares are simultaneously online on all nodes. File shares associated with this type of clustered file server are called scale-out file shares. This is sometimes

referred to as active- active. This is the recommended file server type when deploying either Hyper-V over Server Message Block (SMB) or Microsoft SQL Server over SMB.



Reference: Scale-Out File Server for Application Data Overview

QUESTION 2

You have a server named Server1 that runs Windows Server 2012 R2.

Server1 has a single volume that is encrypted by using BitLocker Drive Encryption (BitLocker).

BitLocker is configured to save encryption keys to a Trusted Platform Module (TPM). Server1 is configured to perform a daily system image backup.

The motherboard on Server1 is upgraded.

After the upgrade, Windows Server 2012 R2 on Server1 fails to start.

You need to start the operating system on Server1 as soon as possible.

Which two actions should you perform? (Each correct answer presents a complete solution. Choose two.)

- A. Move the disk to a server that has a model of the old motherboard. Start the server from the installation media. Run startrec.exe.
- B. Start Server1 from the installation media. Perform a system image recovery.
- C. Move the disk to a server that has a model of the old motherboard. Start the server. Run tpm.msc.
- D. Move the disk to a server that has a model of the old motherboard. Start the server from the installation media. Run the BitLocker Recovery Password Viewer tool.

Correct Answer: CD

QUESTION 3

Your network contains an Active Directory domain named contoso.com.

You are creating a custom Windows Recovery Environment (Windows RE) image.

You need to ensure that when a server starts from the custom Windows RE image, a drive is mapped automatically to a network share.

What should you modify in the image?

- A. startnet.cmd
- B. Xsl-mApp1ngs.xml
- C. Win.ini
- D. smb.types.ps1xml

Correct Answer: A

The best way to define what to start is using startnet.cmd



Add a Customized Script with Startnet.cmd

You can add customized command-line scripts in Windows PE by using Startnet.cmd. By default, Windows PE includes a Startnet.cmd script located at %SYSTEMROOT%\System32 of your customized Windows PE image. Startnet.cmd currently starts Wpeinit.exe. Wpeinit.exe specifically installs Plug and Play devices, processes Unattend.xml settings, and loads network resources.

1. Create a customized Windows PE image as described in [Walkthrough: Create a Custom Windows PE Image](#). During Step 4 of that process ("Add additional customizations"), use the following steps.
2. Edit Startnet.cmd to include your customized commands.

Note

For Plug and Play or networking support, ensure that you include a call to **wpeinit** in your customized Startnet.cmd script.

3. Save your changes and recapture your Windows PE image as described in [Walkthrough: Create a Custom Windows PE Image](#).

[http://technet.microsoft.com/en-us/library/cc766521\(v=ws.10\).aspx](http://technet.microsoft.com/en-us/library/cc766521(v=ws.10).aspx)

QUESTION 4

Your network contains one Active Directory forest. The forest has three sites configured as shown in the following table.

Site name	Subnet
Default-First-Site-Name	192.168.5.0/24
Site1	192.168.1.0/24
Site2	192.168.2.0/24

The forest contains the site links configured as shown in the following table.



Site link	Sites in site link
Default-Site1	Default-First-Site-Name Site1
Site1-Site2	Site1 Site2
DEFAULTIPSITELINK	Default-First-Site-Name Site1 Site2

A domain controller named DC2 has an IP address of 192.168.2.2. DC2 and is in Site2.

You run the following cmdlets.

New-ADReplicationSite Site3

New-ADReplacationSubnet –Name “192.168.3.0/24” –Site Site3

Use the drop-down menus to select the answer choice that completes each statement.

Hot Area:

Answer Area

Site3 is [answer choice] site link.

▼

in the Default-Site1

in the DEFAULTIPSITELINK

in the Site1-Site2

not in any

If you configure DC2 with IP address 192.168.1.2, and then physically move DC2 to Site3, the server object in Directory will [answer choice].

▼

remain in Site2

move to Site1

move to Site3

move to Default-First-Site-Name

Correct Answer:



Answer Area

Site3 is [answer choice] site link.

in the Default-Site1
in the DEFAULTIPSITELINK
in the Site1-Site2
not in any

If you configure DC2 with IP address 192.168.1.2, and then physically move DC2 to Site3, the server object in Directory will [answer choice].

remain in Site2
move to Site1
move to Site3
move to Default-First-Site-Name

* By default all sites are replicating through the DEFAULTIPSITELINK using the default schedule, at every 180 minutes.

* You need to move DC2 logically as well. Reference: Configuring Active Directory Sites and Services
<http://www.vkernel.ro/blog/configuring-active-directory-sites-and-services>

QUESTION 5

Your network contains an Active Directory domain named contoso.com.

The domain contains a server named Server1 that runs Windows Server 2012 R2 and has the DHCP Server server role installed.

Server1 has a scope named Scope1. A policy named Policy1 is configured for Scope1.

Policy1 is configured to provide Hyper-V virtual machines a one-day lease.

All other computers receive an eight-day lease.

You implement an additional DHCP server named Server2 that runs Windows Server 2012 R2.

On Server1, you configure Scopel for DHCP failover.

You discover that virtual machines that receive IP addresses from Server2 have a lease duration of eight days.

You need to ensure that when Server2 assigns IP addresses to the Hyper-V virtual machines, the lease duration is one day. The solution must ensure that other computers that receive IP addresses from Server2 have a lease duration of eight days.

What should you do?

- A. On Server2, right-click Scope1, and then click Reconcile.
- B. On Server1, right-click Scope1, and then click Replicate Scope.



C. On Server2, create a new DHCP policy.

D. On Server1, delete Policy1, and then recreate the policy.

Correct Answer: B

Scope 1 has been set up for DHCP failover. Now we need to replicate it from Server1 to Server2.

[http://technet.microsoft.com/en-us/library/dd183579\(v=ws.10\).aspx](http://technet.microsoft.com/en-us/library/dd183579(v=ws.10).aspx) <http://technet.microsoft.com/en-us/library/cc772101.aspx>

[70-412 VCE Dumps](#)

[70-412 Study Guide](#)

[70-412 Exam Questions](#)



To Read the [Whole Q&As](#), please purchase the [Complete Version](#) from [Our website](#).

Try our product !

100% Guaranteed Success
100% Money Back Guarantee
365 Days Free Update
Instant Download After Purchase
24x7 Customer Support
Average 99.9% Success Rate
More than 800,000 Satisfied Customers Worldwide
Multi-Platform capabilities - [Windows](#), [Mac](#), [Android](#), [iPhone](#), [iPod](#), [iPad](#), [Kindle](#)

We provide exam PDF and VCE of Cisco, Microsoft, IBM, CompTIA, Oracle and other IT Certifications. You can view Vendor list of All Certification Exams offered:

<https://www.passapply.com/allproducts>

Need Help

Please provide as much detail as possible so we can best assist you.
To update a previously submitted ticket:



 <p>One Year Free Update Free update is available within One Year after your purchase. After One Year, you will get 50% discounts for updating. And we are proud to boast a 24/7 efficient Customer Support system via Email.</p>	 <p>Money Back Guarantee To ensure that you are spending on quality products, we provide 100% money back guarantee for 30 days from the date of purchase.</p>	 <p>Security & Privacy We respect customer privacy. We use McAfee's security service to provide you with utmost security for your personal information & peace of mind.</p>
---	---	--

Any charges made through this site will appear as Global Simulators Limited.
All trademarks are the property of their respective owners.
Copyright © passapply, All Rights Reserved.