



# 70-412<sup>Q&As</sup>

Configuring Advanced Windows Server 2012 Services

## Pass Microsoft 70-412 Exam with 100% Guarantee

Free Download Real Questions & Answers **PDF** and **VCE** file from:

<https://www.passapply.com/70-412.html>

100% Passing Guarantee  
100% Money Back Assurance

Following Questions and Answers are all new published by Microsoft  
Official Exam Center

- ⚙ **Instant Download** After Purchase
- ⚙ **100% Money Back** Guarantee
- ⚙ **365 Days** Free Update
- ⚙ **800,000+** Satisfied Customers





### QUESTION 1

Your network contains an Active Directory domain named contoso.com. The domain contains two member servers named Server1 and Server2. All servers run Windows Server 2012.

Server1 and Server2 have the Hyper-V server role and the Failover Clustering feature installed.

Server1 and Server2 are members of a cluster named Cluster1. Cluster1 hosts 10 virtual machines.

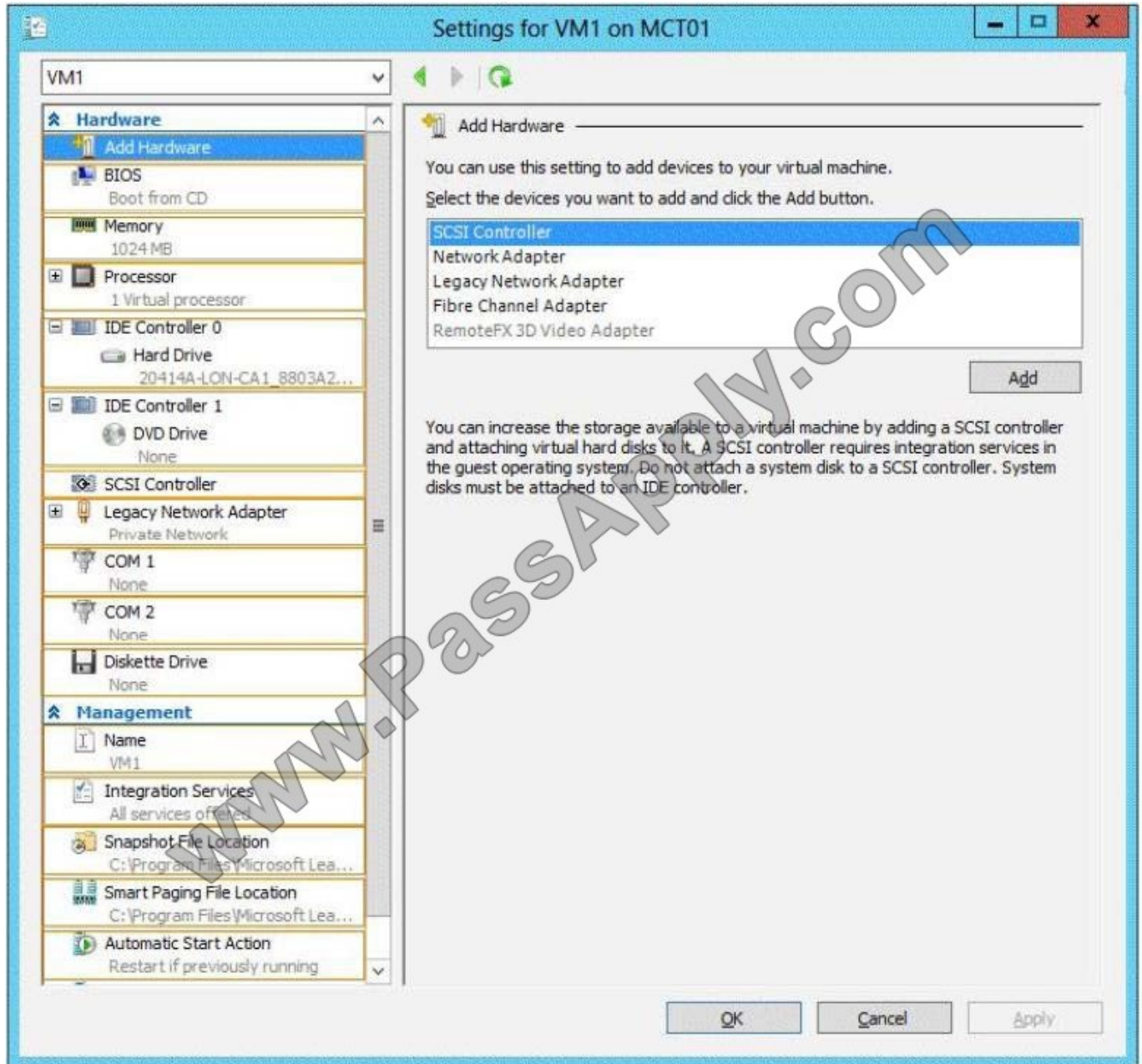
When you try to migrate a running virtual machine from one server to another, you receive the following error message: "There was an error checking for virtual machine compatibility on the target node."

You need to ensure that the virtual machines can be migrated from one node to another.

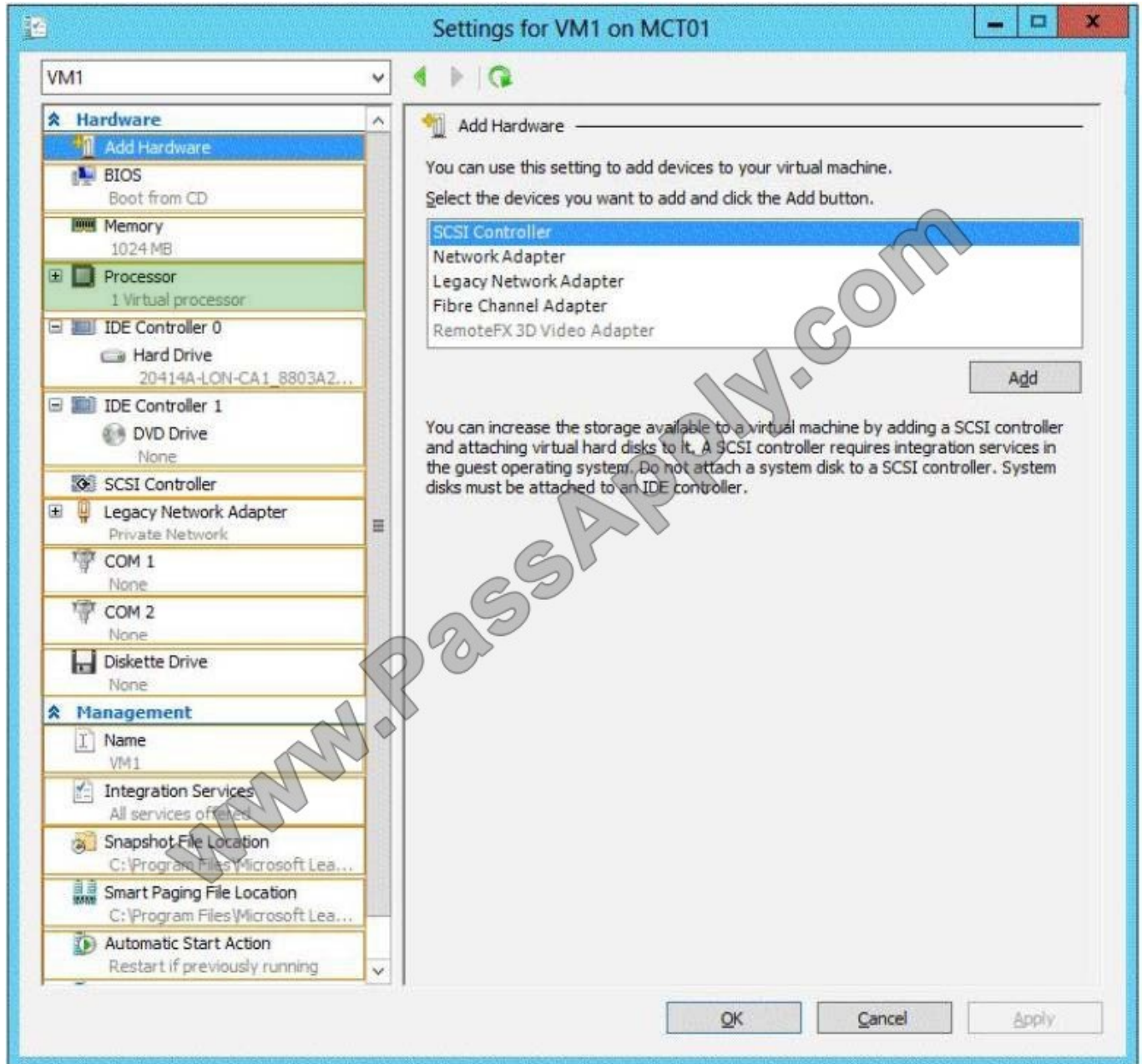
From which node should you perform the configuration?

To answer, select the appropriate node in the answer area.

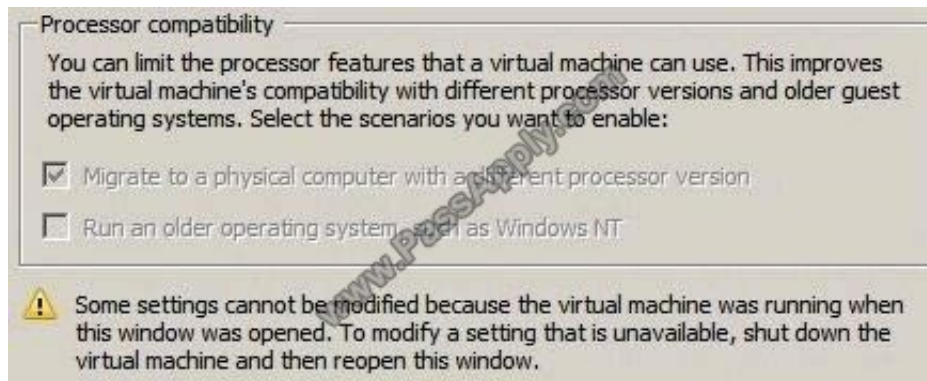
Hot Area:



Correct Answer:

**Explanation/Reference:**

The Migrate to a physical computer with a different processor version setting ensures that the virtual machine uses only the features of the processor that are available on all versions of a virtualization- capable processor by the same processor manufacturer. It does not provide compatibility between different processor manufacturers.



Note: To enable processor compatibility mode for a virtual machine

Click Start, point to Administrative Tools, and then click Hyper-V Manager.

Select the server running Hyper-V and the desired virtual machine.

If the virtual machine is running, you must shut down the virtual machine to change the processor compatibility mode setting.

In the Action pane, click Settings, and then click Processor.

Expand Processor, and click Compatibility.

Click Migrate to a physical computer with a different processor, and then click OK.

Reference: Processor Compatibility Mode in Hyper-V

<https://technet.microsoft.com/en-us/library/dn859550.aspx>

---

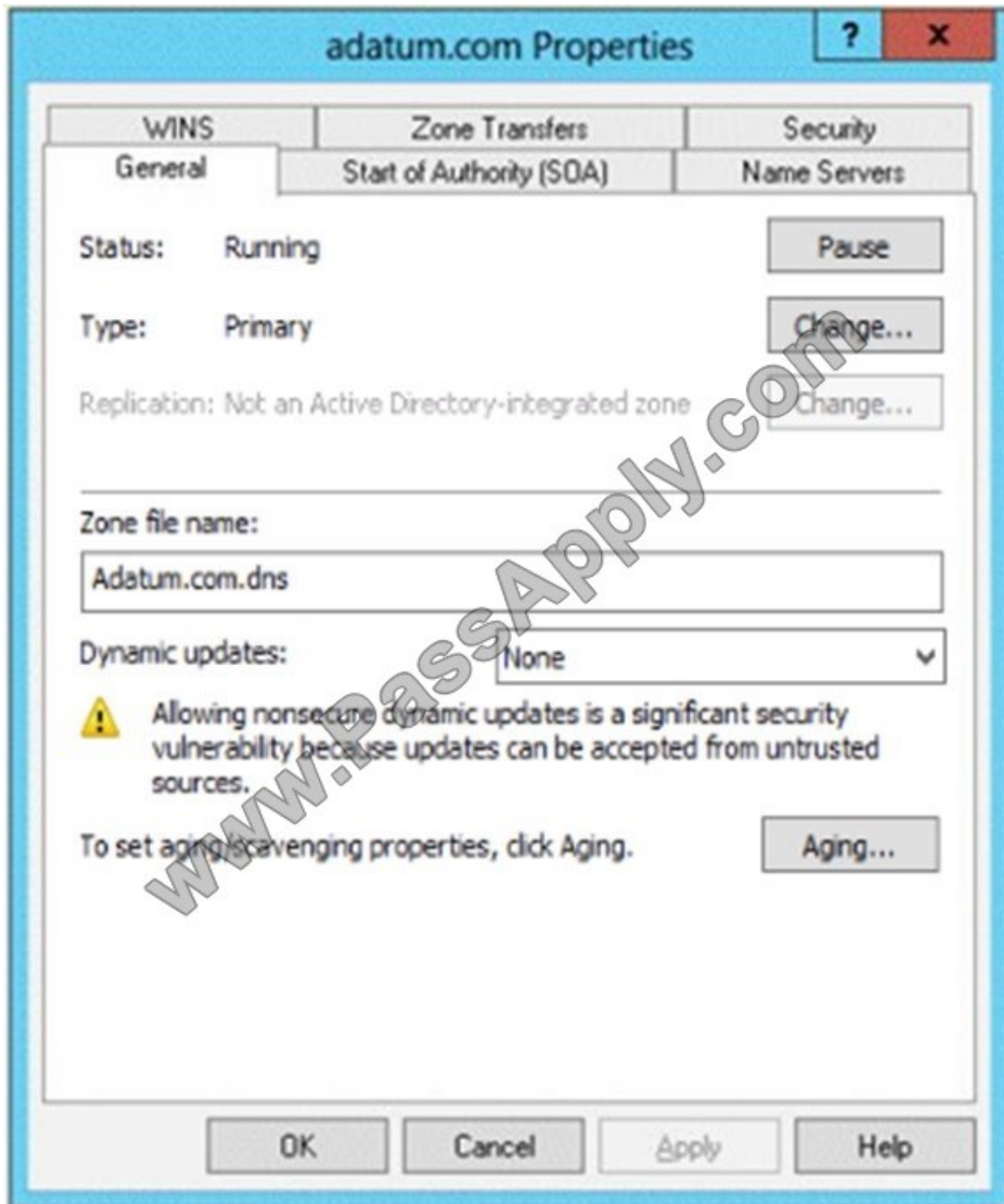
## QUESTION 2

Your network contains an Active Directory domain named contoso.com. The domain contains a domain controller named DC1 that runs Windows Server 2012 R2. DC1 has the DNS Server server role installed.

The network contains client computers that run either Linux, Windows 7, or Windows 8.1.

You have a standard primary zone named adatum.com as shown in the exhibit. (Click the Exhibit button.)





You plan to configure Name Protection on all of the DHCP servers.

You need to configure the adatum.com zone to support Name Protection.

Which two configurations should you perform from DNS Manager? (Each correct answer presents part of the solution. Choose two.)

- A. Sign the zone.
- B. Store the zone in Active Directory.



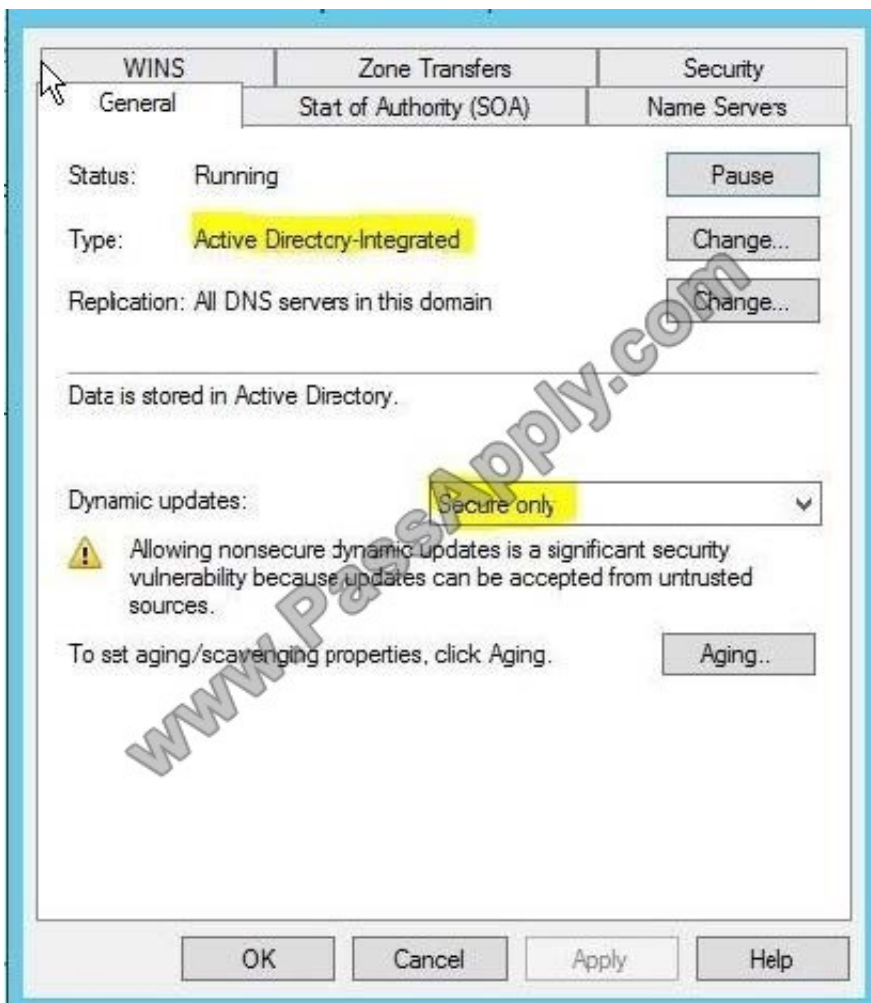
- C. Modify the Security settings of the zone.
- D. Configure Dynamic updates.
- E. Add a DNS key record

Correct Answer: BD

Name protection requires secure update to work. Without name protection DNS names may be hijacked.

You can use the following procedures to allow only secure dynamic updates for a zone. Secure dynamic update is supported only for Active Directory-integrated zones. If the zone type is configured differently, you must change the zone type and directory-integrate the zone before securing it for Domain Name System (DNS) dynamic updates.

1.
  - (B) Convert primary DNS server to Active Directory integrated primary
2.
  - (D) Enable secure dynamic updates



Reference: DHCP: Secure DNS updates should be configured if Name Protection is enabled on any IPv4 scope



[http://technet.microsoft.com/en-us/library/ee941152\(v=ws.10\).aspx](http://technet.microsoft.com/en-us/library/ee941152(v=ws.10).aspx)

### QUESTION 3

Your network contains an Active Directory forest. The forest contains two domains named contoso.com and fabrikam.com. The functional level of the forest is Windows Server 2003.

You have a domain outside the forest named litwareinc.com.

You need to configure an access solution to meet the following requirements:

-

Users in litwareinc.com must be able to access resources on a server named Server1 in contoso.com.

-

Users in the contoso.com forest must be prevented from accessing any resources in litwareinc.com.

-

Users in litwareinc.com must be prevented from accessing any other resources in the contoso.com forest.

Which three actions should you perform? (Each correct answer presents part of the solution. Choose three.)

- A. Configure SID filtering on the trust.
- B. Configure forest-wide authentication on the trust.
- C. Create a one-way forest trust.
- D. Create a one-way external trust
- E. Modify the permission on the Server1 object.
- F. Configure selective authentication on the trust.

Correct Answer: DEF

D (not C): litwareinc.com is outside the forest so we need an external trust (not a forest trust).

E: Must grant the required permissions on Server1.

F (not B): Foreexternal trust we must either select Domain-Wide or Selective Authentication (forst-wide authentication is not an option) BCE

Note:

\*

You can create an external trust to form a one-way or two-way, nontransitive trust with domains that are outside your forest. External trusts are sometimes necessary when users need access to resources in a Windows NT 4.0 domain or in

a domain that is located in a separate forest that is not joined by a forest trust.





/ To select the scope of authentication for users that are authenticating through a forest trust, click the forest trust that you want to administer, and then click Properties.

On the Authentication tab, click either Forest-wide authentication or Selective authentication.

/ To select the scope of authentication for users that are authenticating through an external trust,

click the external trust that you want to administer, and then click Properties .

On the Authentication tab, click either Domain-wide authentication or Selective authentication.

\*

The forest-wide authentication setting permits unrestricted access by any users in the trusted forest to all available shared resources in any of the domains in the trusting forest.

\*

Forest-wide authentication is generally recommended for users within the same organization.

#### QUESTION 4

Note: This question is part of series of questions that use the same or similar answer choices. An answer choice may be correct for more than one question in the series. Each question is independent of the other questions in this series. Information and details provided in a question apply only to that question.

Your network contains one Active Directory forest named contoso.com. The forest contains two child domains and six domain controllers. The domain controllers are configured as shown in the following table.

Name	Domain	Site
DC1	Contoso.com	Main office
DC2	Contoso.com	Main office
DC3	Contoso.com	Europe office
DC4	Contoso.com	Asia office
DC5	Sales.contoso.com	Main office
DC6	Manufacturing.contoso.com	Main office

You have a trust from contoso.com to another forest named fabrikam.com.

You plan to migrate users from contoso.com to fabrikam.com.

You need to ensure that the users who migrated to fabrikam.com can continue to access shared resources in contoso.com. The solution must not require administrators to modify permissions to shared resources.

What should you use?

A. Set-ADSite

B. Set-ADReplicationSite



- C. Set-ADDomain
- D. Set-ADReplicationSiteLink
- E. Set-ADGroup
- F. Set-ADForest
- G. Netdom

Correct Answer: G

The Netdom move command moves a workstation or member server to a new domain. The act of moving a computer to a new domain creates an account for the computer on the domain, if it does not already exist.

Reference: Technet, Netdom move <https://technet.microsoft.com/en-us/library/cc788127.aspx>

---

## QUESTION 5

Your network contains an Active Directory forest named contoso.com. The forest contains a single domain. The forest functional level is Windows Server 2012 R2. You have a domain controller named DC1.

On DC1, you create a new Group Policy object (GPO) named GPO1. You need to verify that GPO1 was replicated to all of the domain controllers. Which tool should you use?

- A. Group Policy Management
- B. Active Directory Sites and Services
- C. DFS Management
- D. Active Directory Administrative Center

Correct Answer: A

In Windows Server 2012, the Group Policy Management Console (GPMC) was enhanced to provide a report for the overall health state of the Group Policy infrastructure for a domain, or to scope the health view to a single GPO.

Reference: Check Group Policy Infrastructure Status <http://technet.microsoft.com/en-us/library/jj134176.aspx>

[Latest 70-412 Dumps](#)

[70-412 PDF Dumps](#)

[70-412 Braindumps](#)



To Read the [Whole Q&As](#), please purchase the [Complete Version](#) from [Our website](#).

## Try our product !

100% Guaranteed Success

100% Money Back Guarantee

365 Days Free Update

Instant Download After Purchase

24x7 Customer Support

Average 99.9% Success Rate

More than 800,000 Satisfied Customers Worldwide

Multi-Platform capabilities - [Windows](#), [Mac](#), [Android](#), [iPhone](#), [iPod](#), [iPad](#), [Kindle](#)

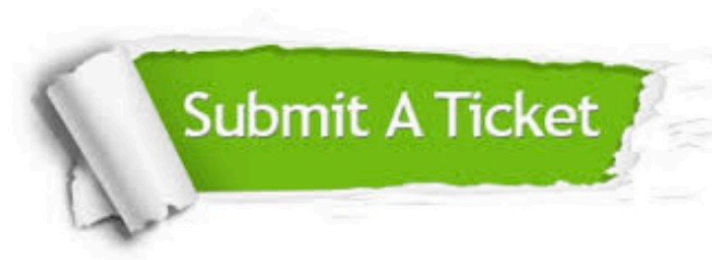
We provide exam PDF and VCE of Cisco, Microsoft, IBM, CompTIA, Oracle and other IT Certifications.  
You can view Vendor list of All Certification Exams offered:

<https://www.passapply.com/allproducts>

## Need Help

Please provide as much detail as possible so we can best assist you.

To update a previously submitted ticket:



 <b>One Year Free Update</b> <p>Free update is available within One Year after your purchase. After One Year, you will get 50% discounts for updating. And we are proud to boast a 24/7 efficient Customer Support system via Email.</p>	 <b>Money Back Guarantee</b> <p>To ensure that you are spending on quality products, we provide 100% money back guarantee for 30 days from the date of purchase.</p>	 <b>Security &amp; Privacy</b> <p>We respect customer privacy. We use McAfee's security service to provide you with utmost security for your personal information &amp; peace of mind.</p>
---	---	--

Any charges made through this site will appear as Global Simulators Limited.

All trademarks are the property of their respective owners.

Copyright © passapply, All Rights Reserved.