



70-411^{Q&As}

Administering Windows Server 2012

Pass Microsoft 70-411 Exam with 100% Guarantee

Free Download Real Questions & Answers **PDF** and **VCE** file from:

<https://www.passapply.com/70-411.html>

100% Passing Guarantee
100% Money Back Assurance

Following Questions and Answers are all new published by Microsoft
Official Exam Center

-  **Instant Download** After Purchase
-  **100% Money Back** Guarantee
-  **365 Days** Free Update
-  **800,000+** Satisfied Customers





QUESTION 1

Your network contains an Active Directory forest. The forest contains two domains named contoso.com and fabrikam.com. All of the DNS servers in both of the domains run Windows Server 2012 R2.

The network contains two servers named Server1 and Server2. Server1 hosts an Active Directory-integrated zone for contoso.com. Server2 hosts an Active Directory-integrated zone for fabrikam.com. Server1 and Server2 connect to each other by using a WAN link.

Client computers that connect to Server1 for name resolution cannot resolve names in fabrikam.com.

You need to configure Server1 to support the resolution of names in fabrikam.com. The solution must ensure that users in contoso.com can resolve names in fabrikam.com if the WAN link fails.

What should you do on Server1?

- A. Create a stub zone.
- B. Add a forwarder.
- C. Create a secondary zone.
- D. Create a conditional forwarder.

Correct Answer: C

<http://technet.microsoft.com/en-us/library/cc771898.aspx> When a zone that this DNS server hosts is a secondary zone, this DNS server is a secondary source for information about this zone. The zone at this server must be obtained from

another remote DNS server computer that also hosts the zone. With secondary, you have ability to resolve records from the other domain even if its DNS servers are temporarily unavailable. While secondary zones contain copies of all the resource records in the corresponding zone on the master name server, stub zones contain only three kinds of resource records:

A copy of the SOA record for the zone.

Copies of NS records for all name servers authoritative for the zone. Copies of A records for all name servers authoritative for the zone.

References:

http://www.windowsnetworking.com/articles-tutorials/windows-2003/DNS_Stub_Zones.html

html

<http://technet.microsoft.com/en-us/library/cc771898.aspx> <http://redmondmag.com/Articles/2004/01/01/The-Long-and-Short-of-Stub-Zones.aspx?Page=2>

aspx?Page=2

QUESTION 2

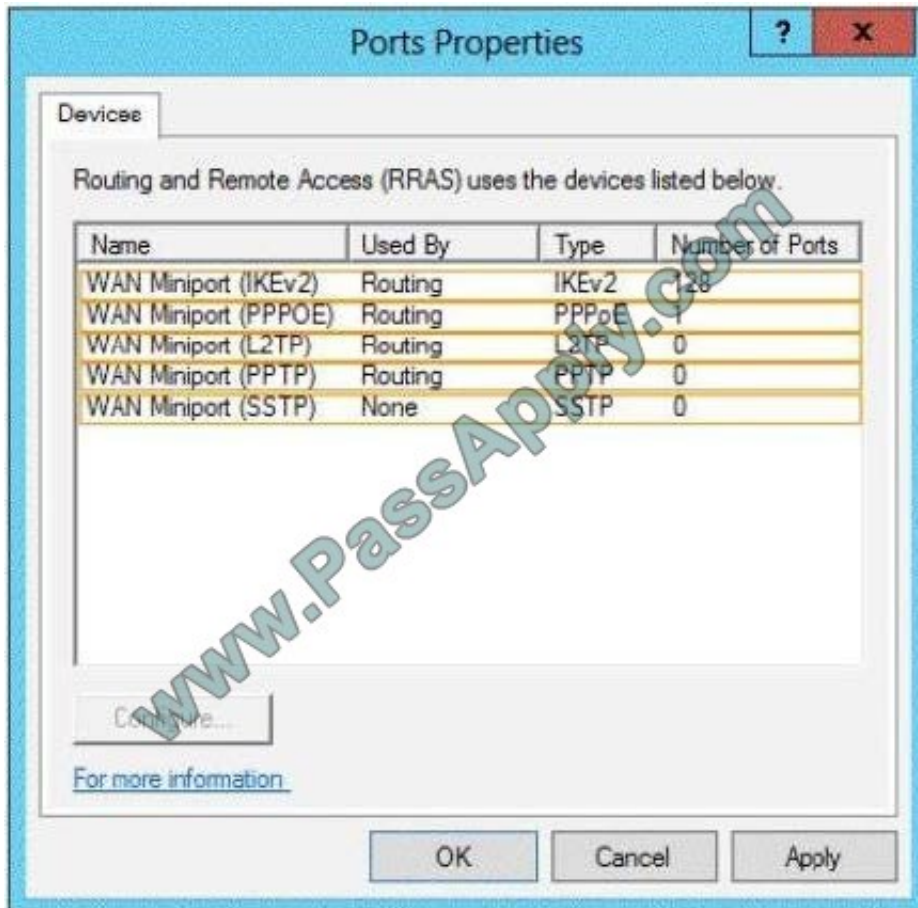


You have a server named Server1 that runs Windows Server 2012 R2. Server1 has the Remote Access server role installed.

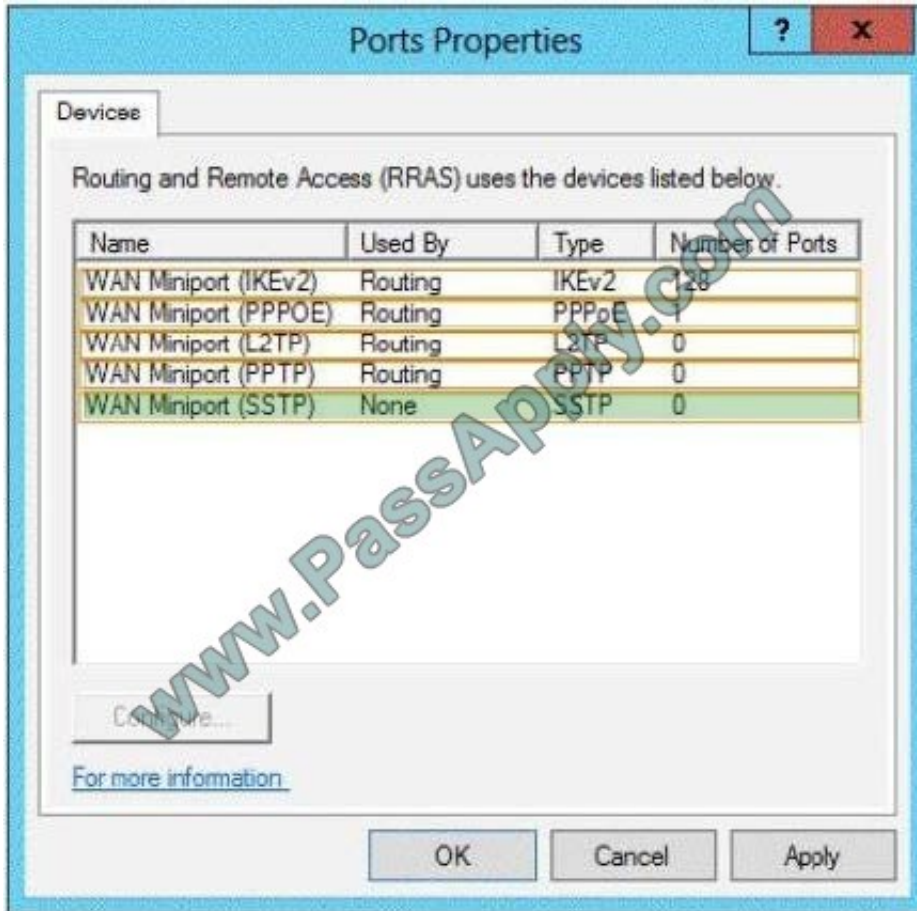
You need to configure the ports on Server1 to ensure that client computers can establish VPN connections to Server1 by using TCP port 443.

What should you modify? To answer, select the appropriate object in the answer area.

Hot Area:



Correct Answer:



QUESTION 3

You have a cluster named Cluster1 that contains two nodes. Both nodes run Windows Server 2012 R2. Cluster1 hosts a virtual machine named VM1 that runs Windows Server 2012 R2.

You configure a custom service on VM1 named Service1. You need to ensure that VM1 will be moved to a different node if Service1 fails.

Which cmdlet should you run on Cluster1?

- A. Add-ClusterVmMonitoredItem
- B. Add-ClusterGenericServiceRole
- C. Set-ClusterResourceDependency
- D. Enable VmResourceMetering

Correct Answer: A

The Add-ClusterVMMonitoredItem cmdlet configures monitoring for a service or an Event Tracing for Windows (ETW) event so that it is monitored on a virtual machine. If the service fails or the event occurs, then the system responds by taking an action based on the failover configuration for the virtual machine resource. For example, the configuration



might specify that the virtual machine be restarted.

QUESTION 4

A technician installs a new server that runs Windows Server 2012 R2.

During the installation of Windows Server Update Services (WSUS) on the new server, the technician reports that on the Choose Languages page of the Windows Server Update Services Configuration Wizard, the only available language is

English.

The technician needs to download updates in French and English.

What should you tell the network technician to do to ensure that the required updates are available?

- A. Complete the Windows Server Update Services Configuration Wizard, and then modify the update language on the server.
- B. Uninstall all instances of the Windows Internal Database.
- C. Change the update languages on the upstream server.
- D. Change the System Local of the server to French.

Correct Answer: C

Explanation: Configure upstream servers to synchronize updates in all languages that are required by downstream replica servers. You will not be notified of needed updates in the unsynchronized languages. The Choose Languages page of the WSUS Configuration Wizard allows you to get updates from all languages or from a subset of languages. Selecting a subset of languages saves disk space, but it is important to choose all the languages that are needed by all the downstream servers and client computers of a WSUS server. Downstream servers and client computers will not receive all the updates they need if you have not selected all the necessary languages for the upstream server. Make sure you select all the languages that will be needed by all the client computers of all the downstream servers. You should generally download updates in all languages on the root WSUS server that synchronizes to Microsoft Update. This selection guarantees that all downstream servers and client computers will receive updates in the languages that they require. To choose update languages for a downstream server: If the upstream server has been configured to download update files in a subset of languages: In the WSUS Configuration Wizard, click Download updates only in these languages (only languages marked with an asterisk are supported by the upstream server), and then select the languages for which you want updates. [https://technet.microsoft.com/en-us/library/hh328568\(v=ws.10\).aspx](https://technet.microsoft.com/en-us/library/hh328568(v=ws.10).aspx)

QUESTION 5

Your network contains one Active directory forest named contoso.com. The forest contains a single domain. All domain controllers are virtual machines that run Windows Server 2012 R2. The functional level of the domain and the forest is Windows Server 2012 R2.



Domain controller name	Configuration
DC01	Active Directory Lightweight Directory Services (AD LDS) Domain naming master Schema master Global catalog DNS server
DC02	Active Directory Certificate Services (AD CS) Relative identifier (ID) master Infrastructure master PDC emulator master DNS server
DC03	Global catalog DHCP server DNS server
DC04	Internet Information Services (IIS) Global catalog DNS server

The forest contains the domain controllers configured as shown in the following table.

In the table below, select the domain controller that can be cloned by using domain controller cloning and select the domain controller that must be online to perform domain controller cloning. NOTE: Make only one selection in each column.

Hot Area:

Domain controller	Can be cloned by using domain controller cloning	Must be online to perform domain controller cloning
DC01	<input type="radio"/>	<input type="radio"/>
DC02	<input type="radio"/>	<input type="radio"/>
DC03	<input type="radio"/>	<input type="radio"/>
DC04	<input type="radio"/>	<input type="radio"/>

Correct Answer:



Domain controller	Can be cloned by using domain controller cloning	Must be online to perform domain controller cloning
DC01	<input type="radio"/>	<input type="radio"/>
DC02	<input type="radio"/>	<input checked="" type="radio"/>
DC03	<input type="radio"/>	<input type="radio"/>
DC04	<input checked="" type="radio"/>	<input type="radio"/>

References:

<http://blogs.technet.com/b/canitpro/archive/2013/06/12/step-by-step-domain-controller-cloning.aspx>

PDC Emulator must be online to perform Domain Controller Cloning.

The following server roles are not supported for cloning:

Dynamic Host Configuration Protocol (DHCP)

Active Directory Certificate Services (AD CS)

Active Directory Lightweight Directory Services (AD LDS)

https://technet.microsoft.com/en-us/library/hh831734.aspx#virtualized_dc_cloning

<http://blogs.technet.com/b/canitpro/archive/2013/06/12/step-by-step-domain-controller-cloning.aspx>

[Latest 70-411 Dumps](#)

[70-411 VCE Dumps](#)

[70-411 Practice Test](#)



To Read the [Whole Q&As](#), please purchase the [Complete Version](#) from [Our website](#).

Try our product !

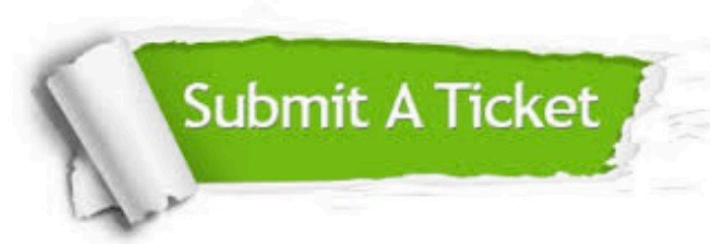
100% Guaranteed Success
100% Money Back Guarantee
365 Days Free Update
Instant Download After Purchase
24x7 Customer Support
Average 99.9% Success Rate
More than 800,000 Satisfied Customers Worldwide
Multi-Platform capabilities - [Windows](#), [Mac](#), [Android](#), [iPhone](#), [iPod](#), [iPad](#), [Kindle](#)

We provide exam PDF and VCE of Cisco, Microsoft, IBM, CompTIA, Oracle and other IT Certifications. You can view Vendor list of All Certification Exams offered:

<https://www.passapply.com/allproducts>

Need Help

Please provide as much detail as possible so we can best assist you.
To update a previously submitted ticket:



 <p>One Year Free Update Free update is available within One Year after your purchase. After One Year, you will get 50% discounts for updating. And we are proud to boast a 24/7 efficient Customer Support system via Email.</p>	 <p>Money Back Guarantee To ensure that you are spending on quality products, we provide 100% money back guarantee for 30 days from the date of purchase.</p>	 <p>Security & Privacy We respect customer privacy. We use McAfee's security service to provide you with utmost security for your personal information & peace of mind.</p>
---	---	--

Any charges made through this site will appear as Global Simulators Limited.
All trademarks are the property of their respective owners.
Copyright © passapply, All Rights Reserved.