



# 70-411<sup>Q&As</sup>

Administering Windows Server 2012

## Pass Microsoft 70-411 Exam with 100% Guarantee

Free Download Real Questions & Answers **PDF** and **VCE** file from:

<https://www.passapply.com/70-411.html>

100% Passing Guarantee  
100% Money Back Assurance

Following Questions and Answers are all new published by Microsoft  
Official Exam Center

-  **Instant Download** After Purchase
-  **100% Money Back** Guarantee
-  **365 Days** Free Update
-  **800,000+** Satisfied Customers





### QUESTION 1

Your network contains an Active Directory domain named contoso.com. The domain contains a domain controller named DC1 that runs Windows Server 2012 R2.

All client computers run Windows 8 Enterprise.

DC1 contains a Group Policy object (GPO) named GPO1.

You need to update the PATH variable on all of the client computers.

Which Group Policy preference should you configure?

- A. Ini Files
- B. Services
- C. Data Sources
- D. Environment

Correct Answer: D

Environment Variable preference items allow you to create, update, replace, and delete user and system environment variables or semicolon-delimited segments of the PATH variable. Before you create an Environment Variable preference item, you should review the behavior of each type of action possible with this extension.

### QUESTION 2

Your network contains one Active Directory forest named contoso.com and one Active Directory forest named adatum.com. Each forest contains a single domain. You have the domain controllers configured as shown in the following table.

Name	Domain	Site	Global catalog
DC1	Contoso.com	Site1	Yes
DC2	Contoso.com	Site2	No
DC3	Adatum.com	Site2	Yes
DC4	Adatum.com	Site1	No

You perform the following three actions:

-Create a user named User1 on DC3.

-Create a file named file1.txt in the SYSVOL folder on DC1.

-Create a Group Policy object (GPO) named GPO1 on DC1 and link GPO1 to Site2. You need to identify on which domain controller or controllers each object is stored. What should you identify? To answer, select the appropriate options in the answer area.

Hot Area:



Answer Area

Domain controller	File1.txt	User1	GPO1
DC1	<input type="checkbox"/>	<input type="checkbox"/>	<input type="checkbox"/>
DC2	<input type="checkbox"/>	<input type="checkbox"/>	<input type="checkbox"/>
DC3	<input type="checkbox"/>	<input type="checkbox"/>	<input type="checkbox"/>
DC4	<input type="checkbox"/>	<input type="checkbox"/>	<input type="checkbox"/>

Correct Answer:

Answer Area

Domain controller	File1.txt	User1	GPO1
DC1	<input checked="" type="checkbox"/>	<input type="checkbox"/>	<input checked="" type="checkbox"/>
DC2	<input checked="" type="checkbox"/>	<input type="checkbox"/>	<input checked="" type="checkbox"/>
DC3	<input type="checkbox"/>	<input checked="" type="checkbox"/>	<input type="checkbox"/>
DC4	<input type="checkbox"/>	<input checked="" type="checkbox"/>	<input type="checkbox"/>

**QUESTION 3**

You have the following Windows PowerShell Output.

```
PS C:\Users\Administrator> New-ADServiceAccount service01 -DNSHostName service01.contoso.com
New-ADServiceAccount : Key does not exist
At line:1 char:1
+ New-ADServiceAccount service01
+ ~~~~~
+CategoryInfo          : NotSpecified: (CN=service01,CN=service01.contoso.com,DC=com:String) [New-ADServiceAccount]. ADException
+FullyQualifiedErrorId : ActiveDirectoryServer:2146893811,Microsoft.ActiveDirectory.Management.Commands.NewADServiceAccount
```

You need to create a Managed Service Account. What should you do?

- A. Run `New-ADServiceAccount` ame "service01" NSHostName service01.contoso.com AMAccountName service01.
- B. Run `New-AuthenticationPolicySilo`, and then run `New-ADServiceAccount` ame "service01" NSHostName service01.contoso.com.
- C. Run `Add-KDSRootKey`, and then run `New-ADServiceAccount` ame "service01" NSHostName service01.contoso.com.
- D. Run `Set-KDSConfiguration`, and then run `New-ADServiceAccount` ame "service01" NSHostName service01.contoso.com.

Correct Answer: C

Explanation: From the exhibit we see that the required key does not exist. First we create this key, then we create the



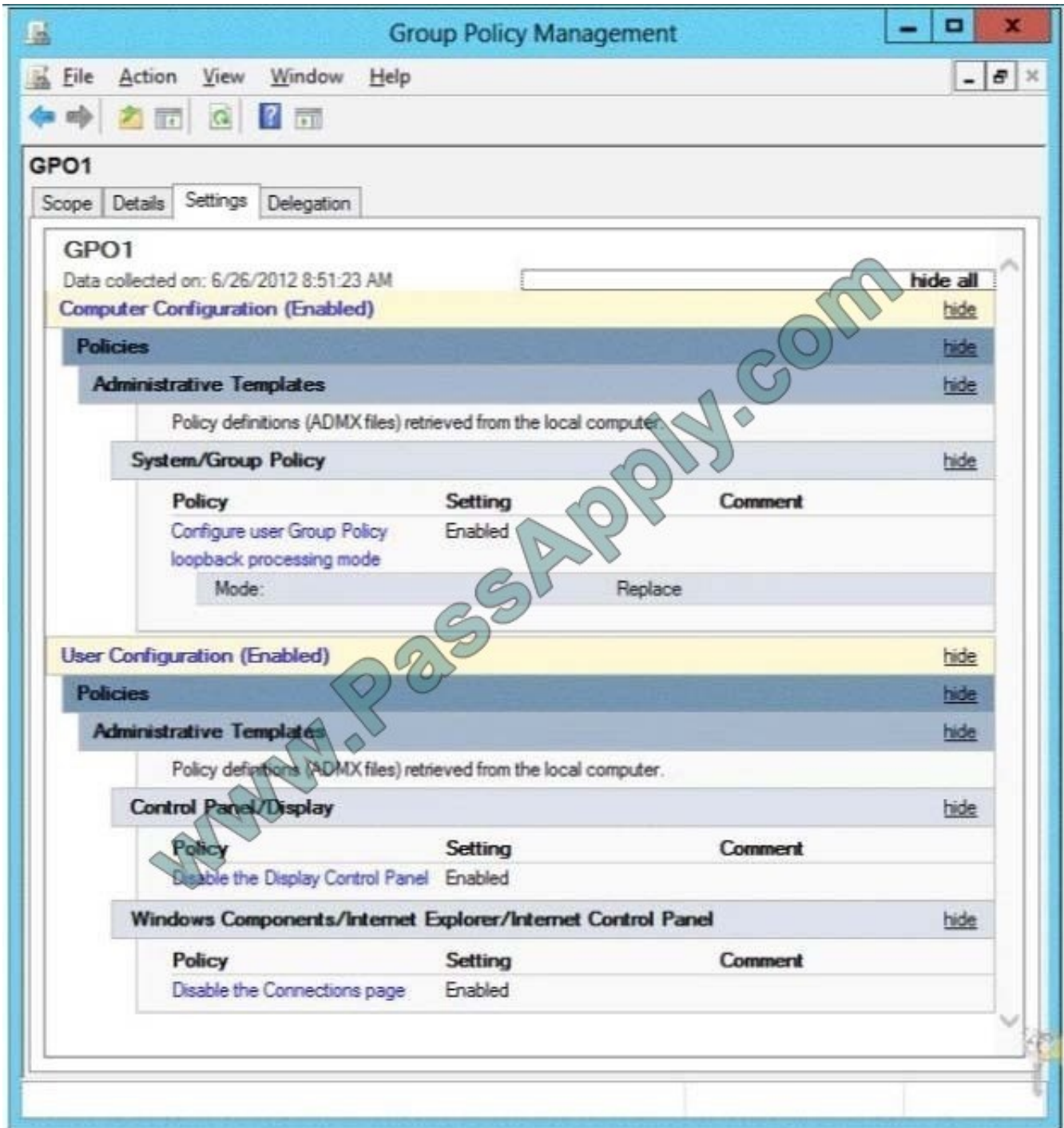
managed service account. The Add-KdsRootKey cmdlet generates a new root key for the Microsoft Group Key Distribution Service (KdsSvc) within Active Directory (AD). The Microsoft Group KdsSvc generates new group keys from the new root key. The New-ADServiceAccount cmdlet creates a new Active Directory managed service account. Reference: New-ADServiceAccount [https://technet.microsoft.com/en-us/library/hh852236\(v=wps.630\).aspx](https://technet.microsoft.com/en-us/library/hh852236(v=wps.630).aspx) Reference: Add-KdsRootKey [https://technet.microsoft.com/en-us/library/jj852117\(v=wps.630\).aspx](https://technet.microsoft.com/en-us/library/jj852117(v=wps.630).aspx)

---

#### QUESTION 4

Your network contains an Active Directory domain named contoso.com. The domain contains an organizational unit (OU) named AllServers\_OU.

You create and link a Group Policy object (GPO) named GPO1 to AllServer\_OU. GPO1 is configured as shown in the exhibit. (Click the Exhibit button.)



d You need to ensure that GPO1 only applies to servers that have Remote Desktop Services (RDS) installed What should you configure?

- A. Item-level targeting
- B. Block Inheritance
- C. Security Filtering
- D. WMI Filtering

Correct Answer: D



Explanation: If you need to configure a Remote Desktop Server farm and need to setup some group policies that only applied to computers that are Remote Desktop Servers, there are a couple of obvious ways you could achieve this. 1) You could put your Remote Desktop Servers in a specific Organisational Unit and link your Group Policies there 2) You could create a WMI Filter to filter by name i.e. SELECT \* FROM Win32\_ComputerSystem WHERE ((Name = `RDSERVER01`) OR (Name = `RDSERVER02`)) If you don't want to have to update the WMI Filter if you need to add more Remote Desktop Servers, you can use the following WMI Filter against the rootCIMV2TerminalServices Namespace: Select \* From Win32\_TerminalServiceSetting Where TerminalServerMode=1

<http://www.focusedit.co.uk/54-group-policy-wmi-filter-for-remote-desktop-server/>  
<https://blogs.technet.microsoft.com/askds/2008/09/11/fun-with-wmi-filters-in-group-policy/>

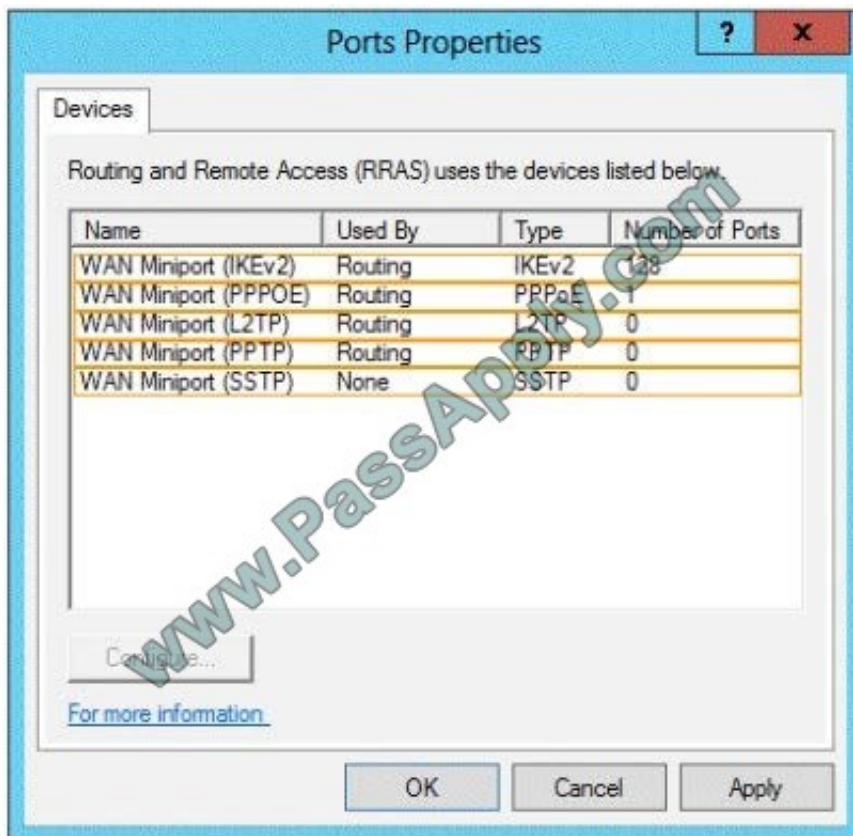
### QUESTION 5

You have a server named Server1 that runs Windows Server 2012 R2. Server1 has the Remote Access server role installed.

You need to configure the ports on Server1 to ensure that client computers can establish VPN connections to Server1. The solution must NOT require the use of certificates or preshared keys.

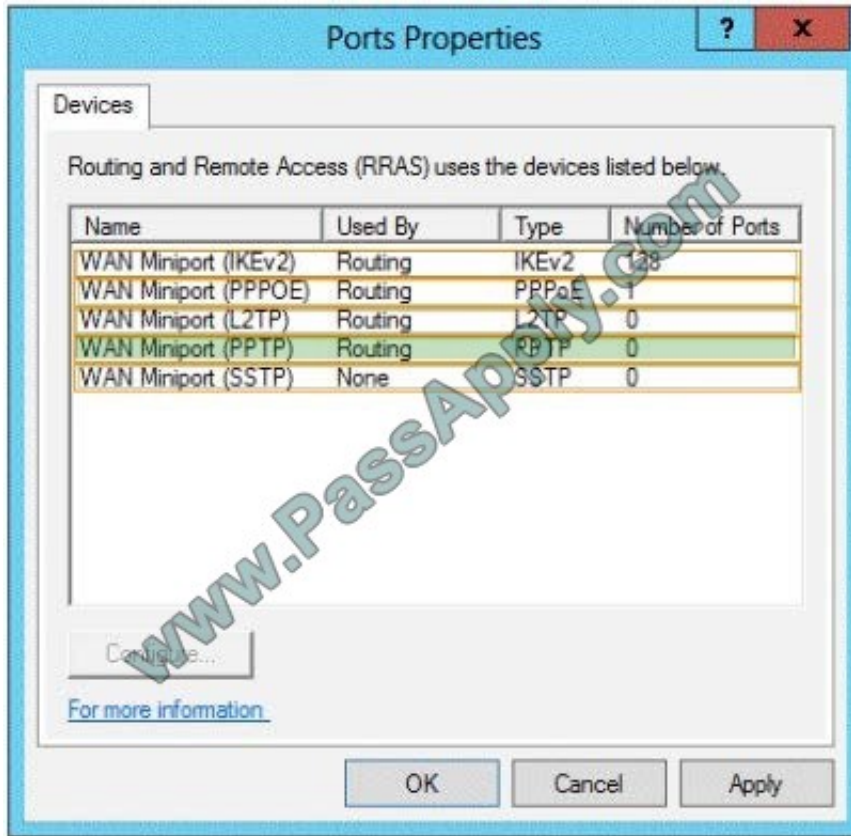
What should you modify?

To answer, select the appropriate object in the answer area.



Hot Area:

Correct Answer:



[Latest 70-411 Dumps](#)

[70-411 VCE Dumps](#)

[70-411 Practice Test](#)



To Read the [Whole Q&As](#), please purchase the [Complete Version](#) from [Our website](#).

## Try our product !

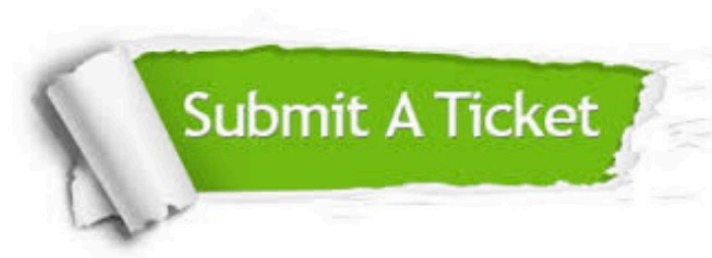
100% Guaranteed Success  
100% Money Back Guarantee  
365 Days Free Update  
Instant Download After Purchase  
24x7 Customer Support  
Average 99.9% Success Rate  
More than 800,000 Satisfied Customers Worldwide  
Multi-Platform capabilities - [Windows](#), [Mac](#), [Android](#), [iPhone](#), [iPod](#), [iPad](#), [Kindle](#)

We provide exam PDF and VCE of Cisco, Microsoft, IBM, CompTIA, Oracle and other IT Certifications. You can view Vendor list of All Certification Exams offered:

<https://www.passapply.com/allproducts>

## Need Help

Please provide as much detail as possible so we can best assist you.  
To update a previously submitted ticket:



 <p><b>One Year Free Update</b> Free update is available within One Year after your purchase. After One Year, you will get 50% discounts for updating. And we are proud to boast a 24/7 efficient Customer Support system via Email.</p>	 <p><b>Money Back Guarantee</b> To ensure that you are spending on quality products, we provide 100% money back guarantee for 30 days from the date of purchase.</p>	 <p><b>Security &amp; Privacy</b> We respect customer privacy. We use McAfee's security service to provide you with utmost security for your personal information &amp; peace of mind.</p>
---	---	--

Any charges made through this site will appear as Global Simulators Limited.  
All trademarks are the property of their respective owners.  
Copyright © passapply, All Rights Reserved.