



70-411^{Q&As}

Administering Windows Server 2012

Pass Microsoft 70-411 Exam with 100% Guarantee

Free Download Real Questions & Answers **PDF** and **VCE** file from:

<https://www.passapply.com/70-411.html>

100% Passing Guarantee
100% Money Back Assurance

Following Questions and Answers are all new published by Microsoft
Official Exam Center

-  **Instant Download** After Purchase
-  **100% Money Back** Guarantee
-  **365 Days** Free Update
-  **800,000+** Satisfied Customers





QUESTION 1

Your network contains two servers named Server1 and Server2. Both servers run Windows Server 2012 R2.

On Server1, you create a Data Collector Set (DCS) named Data1.

You need to export Data1 to Server2.

What should you do first?

- A. Right-click Data1 and click Data Manager.
- B. Right-click Data1 and click Export list.
- C. Right-click Data1 and click Properties.
- D. Right-click Data1 and click Save template.

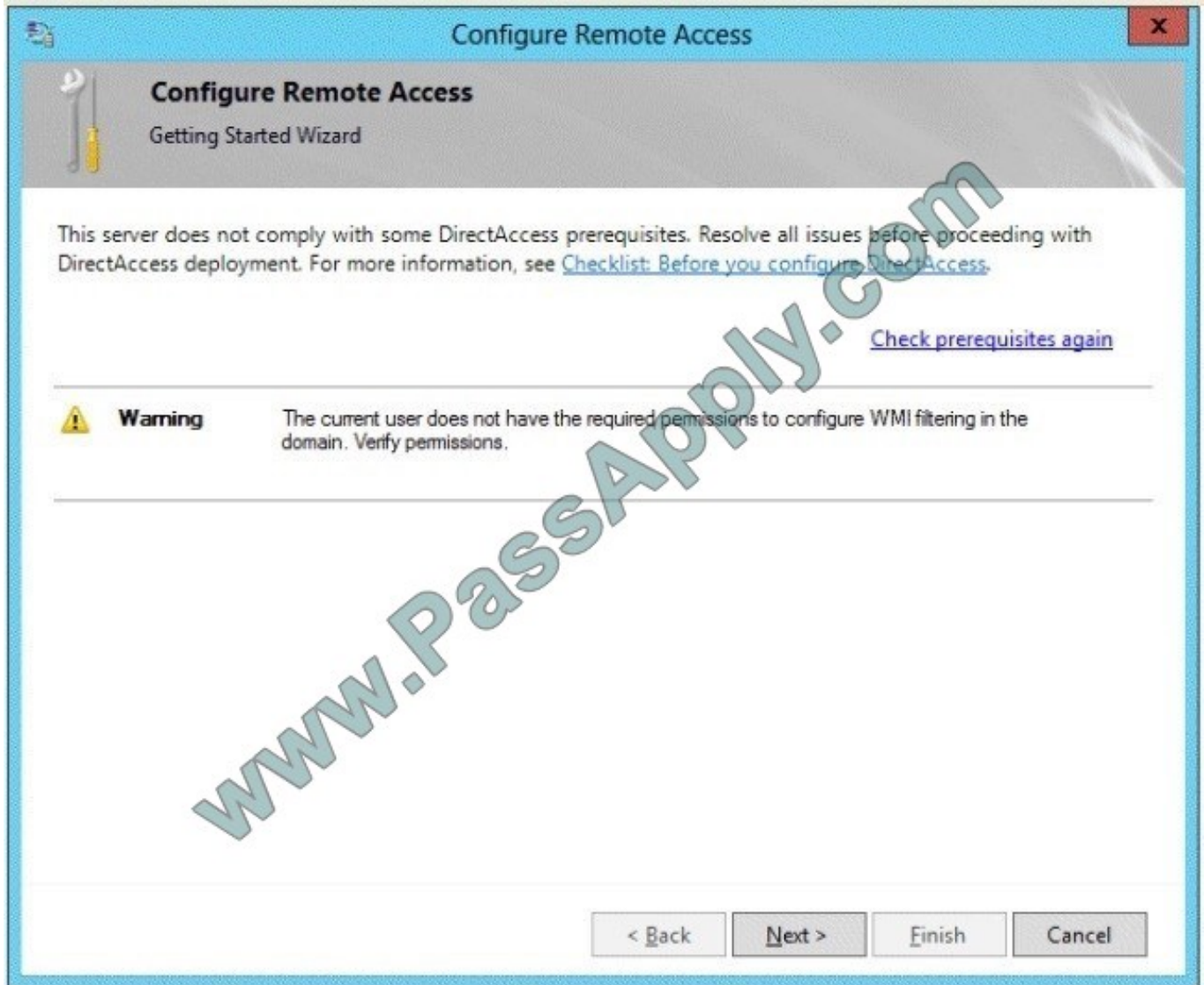
Correct Answer: D

QUESTION 2

Your network contains an Active Directory domain named contoso.com. The domain contains a server named Server1 that runs Windows Server 2012 R2. Server1 has the Remote Access server role installed.

You log on to Server1 by using a user account named User2.

From the Remote Access Management Console, you run the Getting Started Wizard and you receive a warning message as shown in the exhibit. (Click the Exhibit button.)



You need to ensure that you can configure DirectAccess successfully. The solution must minimize the number of permissions assigned to User2. To which group should you add User2?

- A. Enterprise Admins
- B. Administrators
- C. Account Operators
- D. Server Operators

Correct Answer: B

You must have privileges to create WMI filters in the domain in which you want to create the filter. Permissions can be changed by adding a user to the Administrators group.

Administrators (A built-in group)

After the initial installation of the operating system, the only member of the group is the Administrator account. When a computer joins a domain, the Domain Admins group is added to the Administrators group. When a server becomes a



domain controller, the Enterprise Admins group also is added to the Administrators group. The Administrators group has built-in capabilities that give its members full control over the system. The group is the default owner of any object that is

created by a member of the group. This example logs in as a test user who is not a domain user or an administrator on the server. This results in the error specifying that DA can only be configured by a user with local administrator

permissions.

References:

[http://technet.microsoft.com/en-us/library/cc780416\(v=ws.10\).aspx](http://technet.microsoft.com/en-us/library/cc780416(v=ws.10).aspx) [http://technet.microsoft.com/en-us/library/cc775497\(v=ws.10\).aspx](http://technet.microsoft.com/en-us/library/cc775497(v=ws.10).aspx)

QUESTION 3

Your network contains a single Active Directory domain named contoso.com. The domain contains a domain controller named DC1 that hosts the primary DNS zone for contoso.com. All servers dynamically register their host names.

You install three new Web servers that host identical copies of your company's intranet website. The servers are configured as shown in the following table.

Server name	IP address
WEB1.contoso.com	10.0.0.20
WEB2.contoso.com	10.0.0.21
WEB3.contoso.com	10.0.0.22

You need to use DNS records to load balance name resolution queries for intranet.contoso.com between the three Web servers. What is the minimum number of DNS records that you should create manually?

- A. 1
- B. 3
- C. 4
- D. 6

Correct Answer: B

To create DNS Host (A) Records for all internal pool servers

1.

Click Start, click All Programs, click Administrative Tools, and then click DNS.

2.

In DNS Manager, click the DNS Server that manages your records to expand it.

3.



Click Forward Lookup Zones to expand it.

4.

Right-click the DNS domain that you need to add records to, and then click New Host (A or AAAA).

5.

In the Name box, type the name of the host record (the domain name will be automatically appended).

6.

In the IP Address box, type the IP address of the individual Front End Server and then select Create associated pointer (PTR) record or Allow any authenticated user to update DNS records with the same owner name, if applicable.

7.

Continue creating records for all member Front End Servers that will participate in DNS Load Balancing.

For example, if you had a pool named pool1.contoso.com and three Front End Servers, you would create the following DNS entries:

FQDN	Type	Data
Pool1.contoso.com	Host (A)	192.168.1.1
Pool1.contoso.com	Host (A)	192.168.1.2
Pool1.contoso.com	Host (A)	192.168.1.3

Reference:

<http://technet.microsoft.com/en-us/library/cc772506.aspx>

<http://technet.microsoft.com/en-us/library/gg398251.aspx>

QUESTION 4

Your network contains an Active Directory domain named adatum.com.

You need to audit changes to the files in the SYSVOL shares on all of the domain controllers. The solution must minimize the amount of SYSVOL replication traffic caused by the audit.

Which two settings should you configure? (Each correct answer presents part of the solution. Choose two.)

- A. Audit Policy\Audit system events
- B. Advanced Audit Policy Configuration\DS Access
- C. Advanced Audit Policy Configuration\Global Object Access Auditing



- D. Audit Policy\Audit object access
- E. Audit Policy\Audit directory service access
- F. Advanced Audit Policy Configuration\Object Access

Correct Answer: DF

QUESTION 5

Your network contains one Active directory forest named contoso.com. The forest contains a single domain. All domain controllers are virtual machines that run Windows Server 2012 R2. The functional level of the domain and the forest is Windows Server 2012 R2.

Domain controller name	Configuration
DC01	Active Directory Lightweight Directory Services (AD LDS) Domain naming master Schema master Global catalog DNS server
DC02	Active Directory Certificate Services (AD CS) Relative identifier (ID) master Infrastructure master PDC emulator master DNS server
DC03	Global catalog DHCP server DNS server
DC04	Internet Information Services (IIS) Global catalog DNS server

The forest contains the domain controllers configured as shown in the following table.

In the table below, select the domain controller that can be cloned by using domain controller cloning and select the domain controller that must be online to perform domain controller cloning. NOTE: Make only one selection in each column.

Hot Area:



Domain controller	Can be cloned by using domain controller cloning	Must be online to perform domain controller cloning
DC01	<input type="radio"/>	<input type="radio"/>
DC02	<input type="radio"/>	<input type="radio"/>
DC03	<input type="radio"/>	<input type="radio"/>
DC04	<input type="radio"/>	<input type="radio"/>

Correct Answer:

Domain controller	Can be cloned by using domain controller cloning	Must be online to perform domain controller cloning
DC01	<input type="radio"/>	<input type="radio"/>
DC02	<input type="radio"/>	<input checked="" type="radio"/>
DC03	<input type="radio"/>	<input type="radio"/>
DC04	<input checked="" type="radio"/>	<input type="radio"/>

References:

<http://blogs.technet.com/b/canitpro/archive/2013/06/12/step-by-step-domain-controller-cloning.aspx>

PDC Emulator must be online to perform Domain Controller Cloning.

The following server roles are not supported for cloning:

Dynamic Host Configuration Protocol (DHCP)

Active Directory Certificate Services (AD CS)

Active Directory Lightweight Directory Services (AD LDS)

https://technet.microsoft.com/en-us/library/hh831734.aspx#virtualized_dc_cloning

<http://blogs.technet.com/b/canitpro/archive/2013/06/12/step-by-step-domain-controller-cloning.aspx>

[Latest 70-411 Dumps](#)

[70-411 VCE Dumps](#)

[70-411 Study Guide](#)



To Read the [Whole Q&As](#), please purchase the [Complete Version](#) from [Our website](#).

Try our product !

100% Guaranteed Success
100% Money Back Guarantee
365 Days Free Update
Instant Download After Purchase
24x7 Customer Support
Average 99.9% Success Rate
More than 800,000 Satisfied Customers Worldwide
Multi-Platform capabilities - [Windows](#), [Mac](#), [Android](#), [iPhone](#), [iPod](#), [iPad](#), [Kindle](#)

We provide exam PDF and VCE of Cisco, Microsoft, IBM, CompTIA, Oracle and other IT Certifications. You can view Vendor list of All Certification Exams offered:

<https://www.passapply.com/allproducts>

Need Help

Please provide as much detail as possible so we can best assist you.
To update a previously submitted ticket:



 <p>One Year Free Update Free update is available within One Year after your purchase. After One Year, you will get 50% discounts for updating. And we are proud to boast a 24/7 efficient Customer Support system via Email.</p>	 <p>Money Back Guarantee To ensure that you are spending on quality products, we provide 100% money back guarantee for 30 days from the date of purchase.</p>	 <p>Security & Privacy We respect customer privacy. We use McAfee's security service to provide you with utmost security for your personal information & peace of mind.</p>
---	---	--

Any charges made through this site will appear as Global Simulators Limited.
All trademarks are the property of their respective owners.
Copyright © passapply, All Rights Reserved.