



# 70-410<sup>Q&As</sup>

Installing and Configuring Windows Server 2012

## Pass Microsoft 70-410 Exam with 100% Guarantee

Free Download Real Questions & Answers **PDF** and **VCE** file from:

<https://www.passapply.com/70-410.html>

100% Passing Guarantee  
100% Money Back Assurance

Following Questions and Answers are all new published by Microsoft  
Official Exam Center

-  **Instant Download** After Purchase
-  **100% Money Back** Guarantee
-  **365 Days** Free Update
-  **800,000+** Satisfied Customers





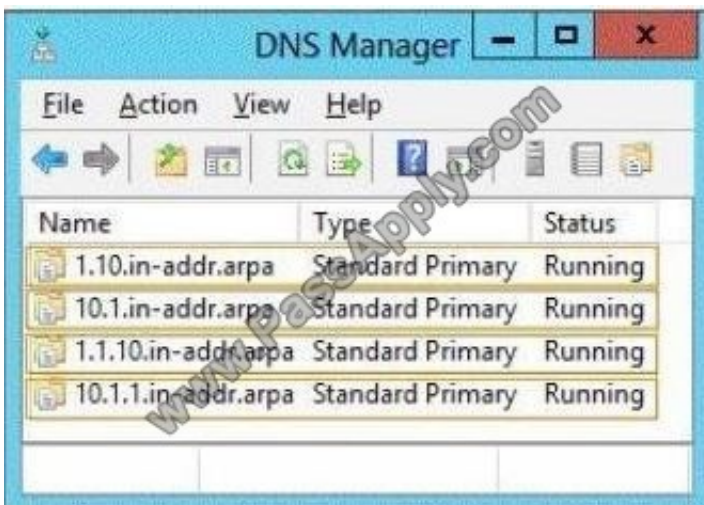
### QUESTION 1

You have a DNS server named Server1. Server1 runs Windows Server 2012 R2. The network ID is 10.1.1.0/24. An administrator creates several reverse lookup zones. You need to identify which reverse lookup zone is configured correctly.

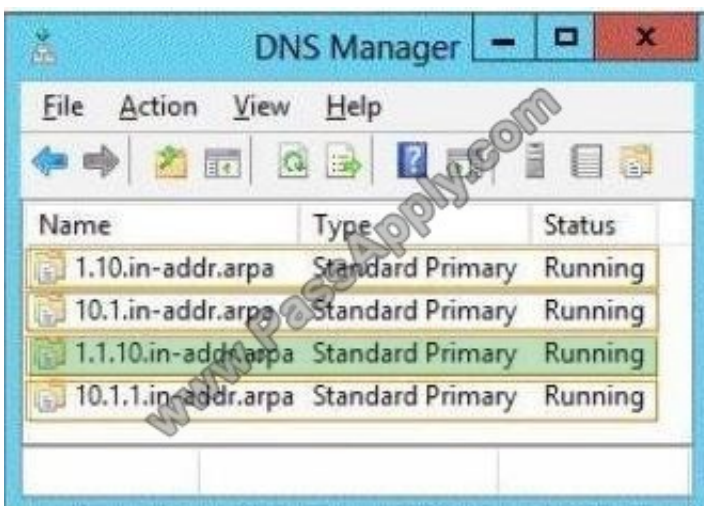
Which zone should you identify?

To answer, select the appropriate zone in the answer area.

Hot Area:



Correct Answer:



Octets specified in reverse order . . . . in-addr .arpa Reference: <http://technet.microsoft.com/en-us/library/cc961414.aspx>

### QUESTION 2



Your network contains an Active Directory domain named contoso.com. The domain contains two servers named Server1 and Server2. Server1 runs Windows Server 2012 R2. Server2 runs Windows Server 2008 R2 Service Pack 1 (SP1)

and has the DHCP Server server role installed.

You need to manage DHCP on Server2 by using the DHCP console on Server1.

What should you do first?

- A. From Windows PowerShell on Server2, run Enable-PSRemoting cmdlet.
- B. From Windows PowerShell on Server1, run Install-Windows Feature.
- C. From Windows Firewall with Advanced Security on Server2, create an inbound rule.
- D. From Internet Explorer on Server2, download and install Windows Management Framework 3.0.
- E. From the Microsoft management Console on Server1, add a snap-in.

Correct Answer: B

When the DHCP role is installed, it appears that the firewall rules are automatically added, so C is not valid (not only that, but either way it is an existing rule that one would need only enable nonetheless, not create a new rule). This means

you only need to add the DHCP Manager MMC snap-in which is a Role Administration Tool feature.

So the correct answer must be B.

References:

Training Guide: Installing and Configuring Windows Server 2012 R2, Chapter 6 Network Administration, p.228

---

### QUESTION 3

You have a DNS server named DNS1 that runs windows server 2012 R2.

DNS1 is used to resolve the names of internet resources by using several DNS forwarders.

You need to prevent DNS1 from performing iterative queries if the DNS forwarders are unable to resolve the queries.

Which cmdlet should you use?

- A. Remove-DNSServerRootHint
- B. Set-DNSServerPrimaryZone
- C. Set-DNSServerGlobalNameZone
- D. Unregister-DNSServerDirectoryPartition

Correct Answer: A

---



#### QUESTION 4

You work as an administrator at Contoso.com. The Contoso.com network consists of a single domain named Contoso.com. All servers in the Contoso.com domain have Windows Server 2012 R2 installed, while domain controllers have

Windows Server 2008 R2 installed.

You are then tasked with deploying a new Windows Server 2012 R2 domain controller. You are preparing to install the DNS Server role, and enable the global catalog server option.

Which of the following actions should you take?

- A. You should consider making use of Server Manager.
- B. You should consider making use of the Active Directory Installation Wizard.
- C. You should consider making use of the DHCP Installation Wizard
- D. You should consider making use of TS Manager

Correct Answer: A

---

#### QUESTION 5

Your network contains an Active Directory domain named adatum.com. The domain contains a member server named L0N-DC1. L0N-DC1 runs Windows Server 2012 R2 and has the DHCP Server server role installed. The network contains 100 client computers and 50 IP phones. The computers and the phones are from the same vendor.

You create an IPv4 scope that contains addresses from 172.16.0.1 to 172.16.1.254.

You need to ensure that the IP phones receive IP addresses in the range of 172.16.1.100 to 172.16.1.200. The solution must minimize administrative effort.

What should you create?

- A. Server level policies
- B. Reservations
- C. Filters
- D. Scope level policies

Correct Answer: D

The scope is already in place.

Scope level policies are typically settings that only apply to that scope. They can also overwrite a setting that was set at the server level.

When a client matches the conditions of a policy, the DHCP server responds to the clients based on the settings of a policy.

Settings associated to a policy can be an IP address range and/or options.



An administrator could configure the policy to provide an IP address from a specified sub-range within the overall IP address range of the scope.

You can also provide different option values for clients satisfying this policy.

Policies can be defined server wide or for a specific scope.

A server wide policy ?on the same lines as server wide option values ?is applicable to all scopes on the DHCP server.

A server wide policy however cannot have an IP address range associated with it.

There a couple of ways to segregate clients based on the type of device. One way to do this is by using vendor class/identifier.

This string sent in option 60 by most DHCP clients identify the vendor and thereby the type of the device.

Another way to segregate clients based on device type is by using the MAC address prefix. The first three bytes of a MAC address is called OUI and identify the vendor or manufacturer of the device. By creating DHCP policies with conditions

based on Vendor Class or MAC address prefix, you can now segregate the clients in your subnet in such a way, that devices of a specific type get an IP address only from a specified IP address range within the scope. You can also give different set of options to these clients.

In conclusion, DHCP policies in Windows Server 2012 R2 enables grouping of clients/devices using the different criteria and delivering targeted network configuration to them. Policy based assignment in Windows Server 2012 R2 DHCP allows you to create simple yet powerful rules to administer DHCP on your network.

References:

Training Guide: Installing and Configuring Windows Server 2012 R2, Chapter 6: Network Administration, p.253

[70-410 VCE Dumps](#)

[70-410 Practice Test](#)

[70-410 Brindumps](#)



To Read the [Whole Q&As](#), please purchase the [Complete Version](#) from [Our website](#).

## Try our product !

100% Guaranteed Success  
100% Money Back Guarantee  
365 Days Free Update  
Instant Download After Purchase  
24x7 Customer Support  
Average 99.9% Success Rate  
More than 800,000 Satisfied Customers Worldwide  
Multi-Platform capabilities - [Windows](#), [Mac](#), [Android](#), [iPhone](#), [iPod](#), [iPad](#), [Kindle](#)

We provide exam PDF and VCE of Cisco, Microsoft, IBM, CompTIA, Oracle and other IT Certifications. You can view Vendor list of All Certification Exams offered:

<https://www.passapply.com/allproducts>

## Need Help

Please provide as much detail as possible so we can best assist you.  
To update a previously submitted ticket:



 <p><b>One Year Free Update</b> Free update is available within One Year after your purchase. After One Year, you will get 50% discounts for updating. And we are proud to boast a 24/7 efficient Customer Support system via Email.</p>	 <p><b>Money Back Guarantee</b> To ensure that you are spending on quality products, we provide 100% money back guarantee for 30 days from the date of purchase.</p>	 <p><b>Security &amp; Privacy</b> We respect customer privacy. We use McAfee's security service to provide you with utmost security for your personal information &amp; peace of mind.</p>
---	---	--

Any charges made through this site will appear as Global Simulators Limited.  
All trademarks are the property of their respective owners.  
Copyright © passapply, All Rights Reserved.