



70-410^{Q&As}

Installing and Configuring Windows Server 2012

Pass Microsoft 70-410 Exam with 100% Guarantee

Free Download Real Questions & Answers **PDF** and **VCE** file from:

<https://www.passapply.com/70-410.html>

100% Passing Guarantee
100% Money Back Assurance

Following Questions and Answers are all new published by Microsoft
Official Exam Center

- ⚙ **Instant Download** After Purchase
- ⚙ **100% Money Back** Guarantee
- ⚙ **365 Days** Free Update
- ⚙ **800,000+** Satisfied Customers





QUESTION 1

Your network contains an Active Directory domain named contoso.com. The domain contains two standalone servers named Server1 and Server2 that are located in a perimeter network. Both servers run the default installation of Windows

Server 2012 R2.

You need to manage Server1 remotely from Server2.

What should you do?

- A. From Server2, add Server1 to the list of TrustedHosts.
- B. From Server2, install a self-signed certificate.
- C. From Server1, add Server2 to the list of TrustedHosts.
- D. From Server1, install a self-signed certificate

Correct Answer: C

For remote connections in a Workgroup to Workgroup/Domain scenario, the remote computer (here Server2) must be added to the trusted hosts list on the source computer (here Server1). To do this, run the following command on the source

computer in a Command Prompt window that is opened with elevated user rights.

```
winrm set winrm/config/client @{TrustedHosts="RemoteComputerName"}
```

Note: TrustedHosts is a setting on the local computer that defines one or more computers that are trusted when establishing remoting sessions using WinRM from the local computer using either ENTER-PSSession or Invoke-Command.

Reference: Remote Management with Server Manager

<https://technet.microsoft.com/en-us/library/dd759202.aspx>

QUESTION 2

You have Windows Server 2012 R2 DHCP servers with 50 leases.

You want to convert leases into reservations using PowerShell command.

What do you need to have to accomplish this?

- A. Computer names
- B. Computer GUIDs
- C. Computer MAC Addresses
- D. Hardware information



Correct Answer: A

[https://technet.microsoft.com/de-de/library/jj590686\(v=wps.630\).aspx](https://technet.microsoft.com/de-de/library/jj590686(v=wps.630).aspx)

QUESTION 3

You have a server named Server1. Server1 runs Windows Server 2012 R2.

Server1 has two network adapters. Each network adapter must be configured as shown in the following table.

Network adapter name	Required IPv6 address type
NIC1	Private Routable
NIC2	Multicast

You need to configure the correct IPv6 address prefix for each network adapter. Which prefix should you select for each network adapter?

To answer, drag the appropriate IPv6 prefix to the correct network adapter in the answer area. Each prefix may be used once, more than once, or not at all. You may need to drag the split bar between panes or scroll to view content.

Select and Place:

The screenshot shows a configuration window with two panes. The left pane, titled 'IPv6 Prefixes', contains four yellow buttons with the following text: '2000::', 'FC00::', 'FE80::', and 'FF00::'. The right pane, titled 'Answer Area', contains two slots. The top slot is labeled 'NIC1' and the bottom slot is labeled 'NIC2'. Both slots currently display the text 'IPv6 Prefix'.

Correct Answer:

The screenshot shows the same configuration window as before, but with the correct prefixes assigned. In the 'Answer Area', the 'NIC1' slot now contains the 'FC00::' prefix and the 'NIC2' slot contains the 'FF00::' prefix. The 'IPv6 Prefixes' list on the left remains the same.

An IPv6 multicast address always begins with 11111111 or FF and includes additional structure that identifies the scope of the address and the multicast group to which the interface belongs. IPv6 multicast addresses, therefore, are always of



the form FF00::/8.

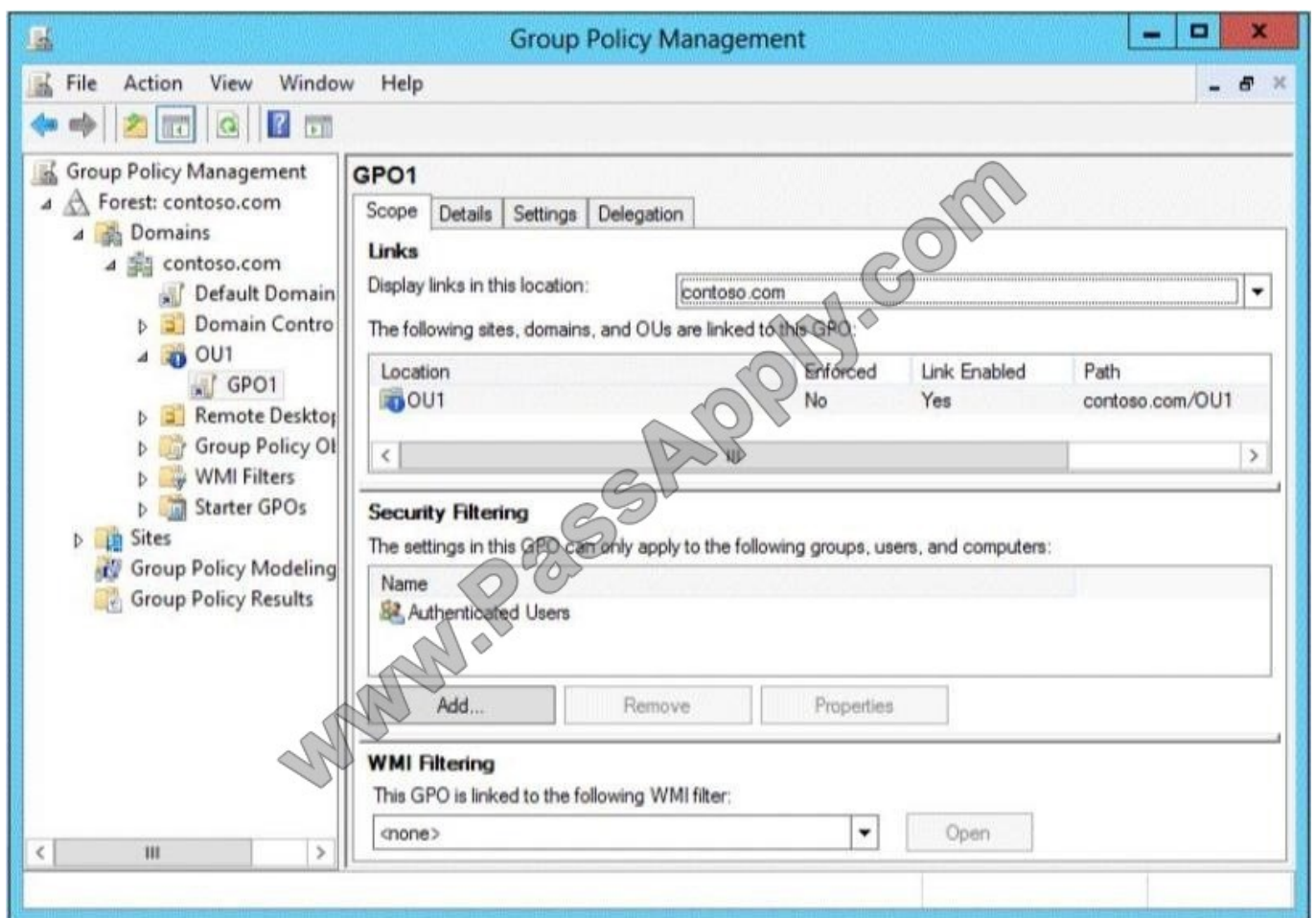
QUESTION 4

Your network contains an Active Directory domain named contoso.com.

You have a Group Policy object (GPO) named GPO1 that contains several user settings. GPO1 is linked to an organizational unit (OU) named OU1.

The help desk reports that GPO1 applies to only some of the users in OU1.

You open Group Policy Management as shown in the exhibit. (Click the Exhibit button.)



You need to configure GPO1 to apply to all of the users in OU1. What should you do?

- A. Modify the Security settings of GPO1.
- B. Disable Block Inheritance on OU1.
- C. Modify the GPO status of GPO1.
- D. Enforce GPO1.

Correct Answer: A



Inheritance is blocked, but that would only affect policies applied ABOVE the given OU, not the one applied directly to it (as is the case with GPO1). Also Enforcing a policy is only going to cause it to be applied even when inheritance is blocked (which, as mentioned, does not make a difference on policies which are directly linked to the OU as a child). That means that there must be something in the security settings (such as a Security Group which does not have the "read" or "Apply group policy" permission) preventing ALL of the users in OU1 from having the policy applied. (GPO status is the status of its replication within the forest, so it is not relevant here.)

QUESTION 5

You work as a senior administrator at Contoso.com. The Contoso.com network consists of a single domain named Contoso.com. All servers on the Contoso.com network have Windows Server 2012 R2 installed, and all workstations have

Windows 8 installed.

You are running a training exercise for junior administrators. You are currently discussing a Windows PowerShell cmdlet that activates previously de-activated firewall rules.

Which of the following is the cmdlet being discussed?

- A. Set-NetFirewallRule
- B. Enable-NetFirewallRule
- C. Set-NetIPsecRule
- D. Enable-NetIPsecRule

Correct Answer: B

Enable-NetFirewallRule ?Enables a previously disabled firewall rule.

[Latest 70-410 Dumps](#)

[70-410 Study Guide](#)

[70-410 Braindumps](#)



To Read the [Whole Q&As](#), please purchase the [Complete Version](#) from [Our website](#).

Try our product !

100% Guaranteed Success

100% Money Back Guarantee

365 Days Free Update

Instant Download After Purchase

24x7 Customer Support

Average 99.9% Success Rate

More than 800,000 Satisfied Customers Worldwide

Multi-Platform capabilities - [Windows](#), [Mac](#), [Android](#), [iPhone](#), [iPod](#), [iPad](#), [Kindle](#)

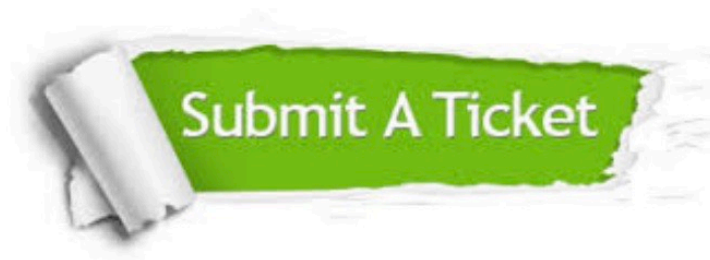
We provide exam PDF and VCE of Cisco, Microsoft, IBM, CompTIA, Oracle and other IT Certifications.
You can view Vendor list of All Certification Exams offered:

<https://www.passapply.com/allproducts>

Need Help

Please provide as much detail as possible so we can best assist you.

To update a previously submitted ticket:



 One Year Free Update <p>Free update is available within One Year after your purchase. After One Year, you will get 50% discounts for updating. And we are proud to boast a 24/7 efficient Customer Support system via Email.</p>	 Money Back Guarantee <p>To ensure that you are spending on quality products, we provide 100% money back guarantee for 30 days from the date of purchase.</p>	 Security & Privacy <p>We respect customer privacy. We use McAfee's security service to provide you with utmost security for your personal information & peace of mind.</p>
---	---	--

Any charges made through this site will appear as Global Simulators Limited.

All trademarks are the property of their respective owners.

Copyright © passapply, All Rights Reserved.