



# 70-410<sup>Q&As</sup>

Installing and Configuring Windows Server 2012

## Pass Microsoft 70-410 Exam with 100% Guarantee

Free Download Real Questions & Answers **PDF** and **VCE** file from:

<https://www.passapply.com/70-410.html>

100% Passing Guarantee  
100% Money Back Assurance

Following Questions and Answers are all new published by Microsoft  
Official Exam Center

- ⚙ **Instant Download** After Purchase
- ⚙ **100% Money Back** Guarantee
- ⚙ **365 Days** Free Update
- ⚙ **800,000+** Satisfied Customers





### QUESTION 1

You have a print server named Server1 that runs Windows Server 2012 R2.

You discover that when there are many pending print jobs, the system drive occasionally runs out of free space.

You add a new hard disk to Server1. You create a new NTFS volume.

You need to prevent the print jobs from consuming disk space on the system volume.

What should you modify?

- A. The properties on the new volume
- B. The properties of the Print Spooler service
- C. The Print Server Properties
- D. The properties of each shared printer

Correct Answer: C

Windows spools print jobs by default to the following directory as they are processed:

%SystemRoot%\SYSTEM32\POOL\PRINTERS.

It is possible for the administrator of a Windows print server to manually instruct Windows the location for placing the spool files, if for example there is a concern for disk space.

---

### QUESTION 2

You have a server named Server1 that runs Windows Server 2012 R2.

You need to perform the following storage configuration tasks on Server1:

Bring a disk named Disk1 online.

Defragment a volume named Volume1.

Remove a disk named Disk2 from a storage pool named Pool1.

Which cmdlet should you use to perform each task?

To answer, drag the appropriate cmdlets to the correct tasks. Each cmdlet may be used once, more than once, or not at all. You may need to drag the split bar between panes or scroll to view content.

Select and Place:



Cmdlets	Answer Area
Initialize-Disk	Bring a disk named Disk1 online. <input type="text" value="Cmdlet"/>
Optimize-Volume	Defragment a volume named Volume1. <input type="text" value="Cmdlet"/>
Remove-PhysicalDisk	Remove a disk named Disk2 from a storage pool named Pool1. <input type="text" value="Cmdlet"/>
Repair-Volume	
Set-Disk	
Set-PhysicalDisk	
Set-StoragePool	
Update-Disk	

Correct Answer:

Cmdlets	Answer Area
Initialize-Disk	Bring a disk named Disk1 online. <input type="text" value="Set-Disk"/>
<input type="text"/>	
<input type="text"/>	Defragment a volume named Volume1. <input type="text" value="Optimize-Volume"/>
Repair-Volume	
<input type="text"/>	Remove a disk named Disk2 from a storage pool named Pool1. <input type="text" value="Remove-PhysicalDisk"/>
Set-PhysicalDisk	
Set-StoragePool	
Update-Disk	

### QUESTION 3

You have 10 domain controllers in a domain.

You need to prevent several members of domain admin groups from logging on the domain controller.

Which two objects should you create and configure?

A. GPO to the domain



- B. authentication policy
- C. authentication policy silo
- D. a central access policy
- E. a user certificate

Correct Answer: BC

References: <https://dirteam.com/sander/2014/12/23/new-features-in-active-directory-domain-services-in-windows-server-2012-r2-part-3-authentication-policies-and-authentication-policy-silos/>

---

#### QUESTION 4

Your network contains an Active Directory domain named contoso.com. The domain contains a file server named Server1 that runs Windows Server 2012 R2. Server1 contains a shared folder named Share1. Share1 contains the home folder of each user.

All users have the necessary permissions to access only their home folder.

The users report that when they access Share1, they can see the home folders of all the users.

You need to ensure that the users see only their home folder when they access Share1.

What should you do from Server1?

- A. From Windows Explorer, modify the properties of the volume that contains Share1.
- B. From Server Manager, modify the properties of the volume that contains Share1.
- C. From Server Manager, modify the properties of Share1.
- D. From Windows Explorer, modify the properties of Share1.

Correct Answer: C

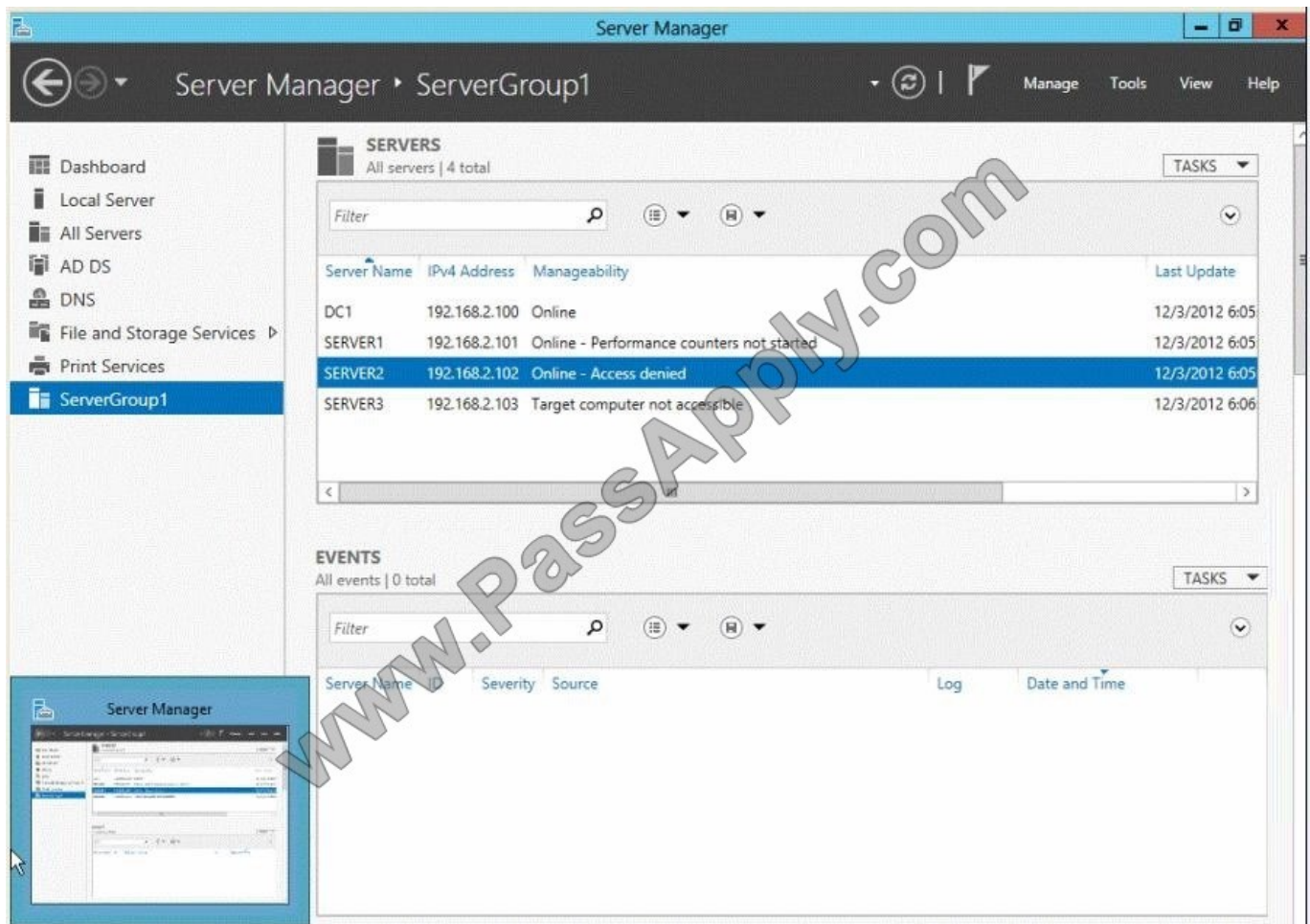
---

#### QUESTION 5

Your network contains an Active Directory domain named contoso.com. The domain contains three servers named Server1, Server2, and Server3.

You create a server group named ServerGroup1.

You discover the error message shown in the following exhibit. (Click the Exhibit button.)



You need to ensure that Server2 can be managed remotely by using Server Manager.

What should you do?

- A. On DC1, run the Enable-PSSessionConfiguration cmdlet.
- B. On Server2, run the Add-Computer cmdlet.
- C. On Server2 modify the membership of the Remote Management Users group.
- D. From Active Directory Users and Computers, add a computer account named Server2, and then restart Server2.

Correct Answer: C

This is a security issue. To be able to access Server2 remotely through Server Manager the user need to be a member of the Remote Management Users group. Note:

\*

Name: BUILTIN\Remote Management Users

Description: A Builtin Local group. Members of this group can access WMI resources over management protocols (such as WS-Management via the Windows Remote Management service). This applies only to WMI namespaces that grant

access to the user.



\*

### Enable-ServerManagerStandardUserRemoting

Provides one or more standard, non-Administrator users access to event, service, performance counter, and role and feature inventory data for a server that you are managing by using Server Manager.

Syntax:

Parameter Set: Default

Enable-ServerManagerStandardUserRemoting [-User] [-Force] [-Confirm] [-WhatIf]

[ ]

### Detailed Description

Provides one or more standard, non-Administrator users access to event, service, performance counter, and role and feature inventory data for a server that you are managing, either locally or remotely, by using Server Manager. The cmdlet

must be run locally on the server that you are managing by using Server Manager. The cmdlet works by performing the following actions:

Adds access rights for specified standard users to the root\cimv2 namespace on the local server (for access to role and feature inventory information).

Adds specified standard users to required user groups (Remote Management Users, Event Log Readers, and Performance Log Readers) that allow remote access to event and performance counter logs on the managed server.

Changes access rights in the Service Control Manager to allow specified standard users remote access to the status of services on the managed server.

Incorrect:

Not A: the Enable-PSSessionConfiguration. This is an advanced cmdlet that is designed to be used by system administrators to manage customized session configurations for their users.

[70-410 PDF Dumps](#)

[70-410 Study Guide](#)

[70-410 Braindumps](#)





To Read the [Whole Q&As](#), please purchase the [Complete Version](#) from [Our website](#).

## Try our product !

100% Guaranteed Success

100% Money Back Guarantee

365 Days Free Update

Instant Download After Purchase

24x7 Customer Support

Average 99.9% Success Rate

More than 800,000 Satisfied Customers Worldwide

Multi-Platform capabilities - [Windows](#), [Mac](#), [Android](#), [iPhone](#), [iPod](#), [iPad](#), [Kindle](#)

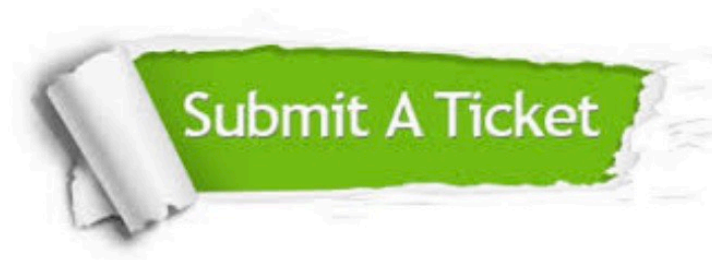
We provide exam PDF and VCE of Cisco, Microsoft, IBM, CompTIA, Oracle and other IT Certifications.  
You can view Vendor list of All Certification Exams offered:

<https://www.passapply.com/allproducts>

## Need Help

Please provide as much detail as possible so we can best assist you.

To update a previously submitted ticket:



 <b>One Year Free Update</b> Free update is available within One Year after your purchase. After One Year, you will get 50% discounts for updating. And we are proud to boast a 24/7 efficient Customer Support system via Email.	 <b>Money Back Guarantee</b> To ensure that you are spending on quality products, we provide 100% money back guarantee for 30 days from the date of purchase.	 <b>Security &amp; Privacy</b> We respect customer privacy. We use McAfee's security service to provide you with utmost security for your personal information & peace of mind.
---	---	--

Any charges made through this site will appear as Global Simulators Limited.

All trademarks are the property of their respective owners.

Copyright © passapply, All Rights Reserved.