



# 70-410<sup>Q&As</sup>

Installing and Configuring Windows Server 2012

## Pass Microsoft 70-410 Exam with 100% Guarantee

Free Download Real Questions & Answers **PDF** and **VCE** file from:

<https://www.passapply.com/70-410.html>

100% Passing Guarantee  
100% Money Back Assurance

Following Questions and Answers are all new published by Microsoft  
Official Exam Center

- ⚙ **Instant Download** After Purchase
- ⚙ **100% Money Back** Guarantee
- ⚙ **365 Days** Free Update
- ⚙ **800,000+** Satisfied Customers





### QUESTION 1

You work as an administrator at Contoso.com. The Contoso.com network consists of a single domain named Contoso.com. All servers on the Contoso.com network have Windows Server 2008 R2 installed.

Most of the Contoso.com servers have 64-bit CPU's installed, while the rest have 32-bit CPU's installed. You are informed that Contoso.com wants to deploy Windows Server 2012 R2 on all their servers.

You need to make recommendations to ensure that this is possible.

Which of the following would you recommend?

- A. You should inform Contoso.com that the deployment can proceed without any changes.
- B. You should inform Contoso.com that the servers with 32-bit CPU's must be upgraded to include 64-bit CPU's for the deployment to proceed.
- C. You should inform Contoso.com that the servers with 64-bit CPU's must be upgraded to include 32-bit CPU's for the deployment to proceed.
- D. You should inform Contoso.com that the deployment is not in any way possible.

Correct Answer: B

Windows Server 2012 is a 64-bit only operating system. Minimum: 1.4 GHz 64-bit processor

---

### QUESTION 2

Your company has a remote office that contains 1,600 client computers on a single subnet.

You need to select a subnet mask for the network that will support all of the client computers. The solution must minimize the number of unused addresses. Which subnet mask should you select?

- A. 255.255.248.0
- B. 255.255.252.0
- C. 255.255.254.0
- D. 255.255.240.0

Correct Answer: A

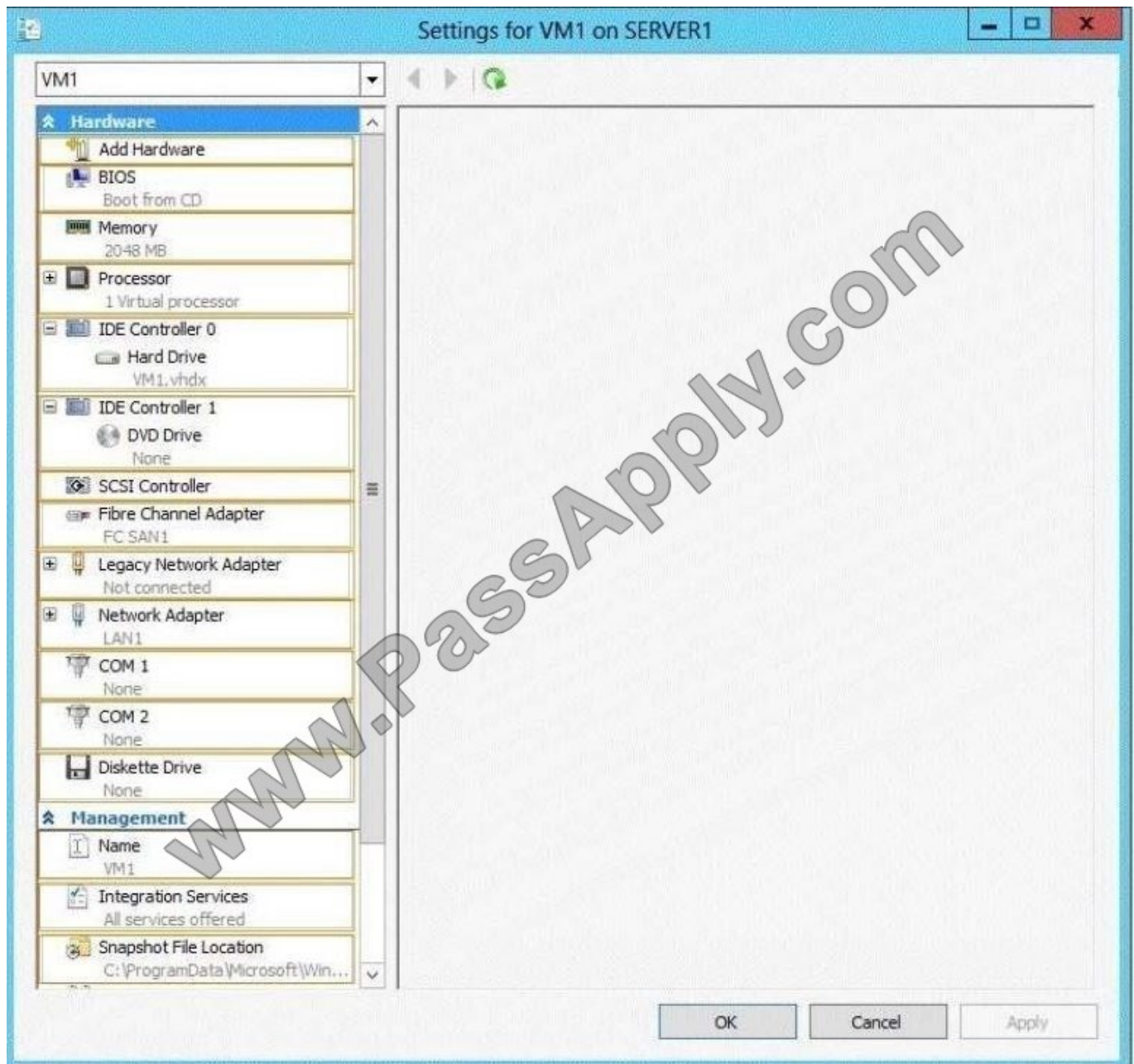
---

### QUESTION 3

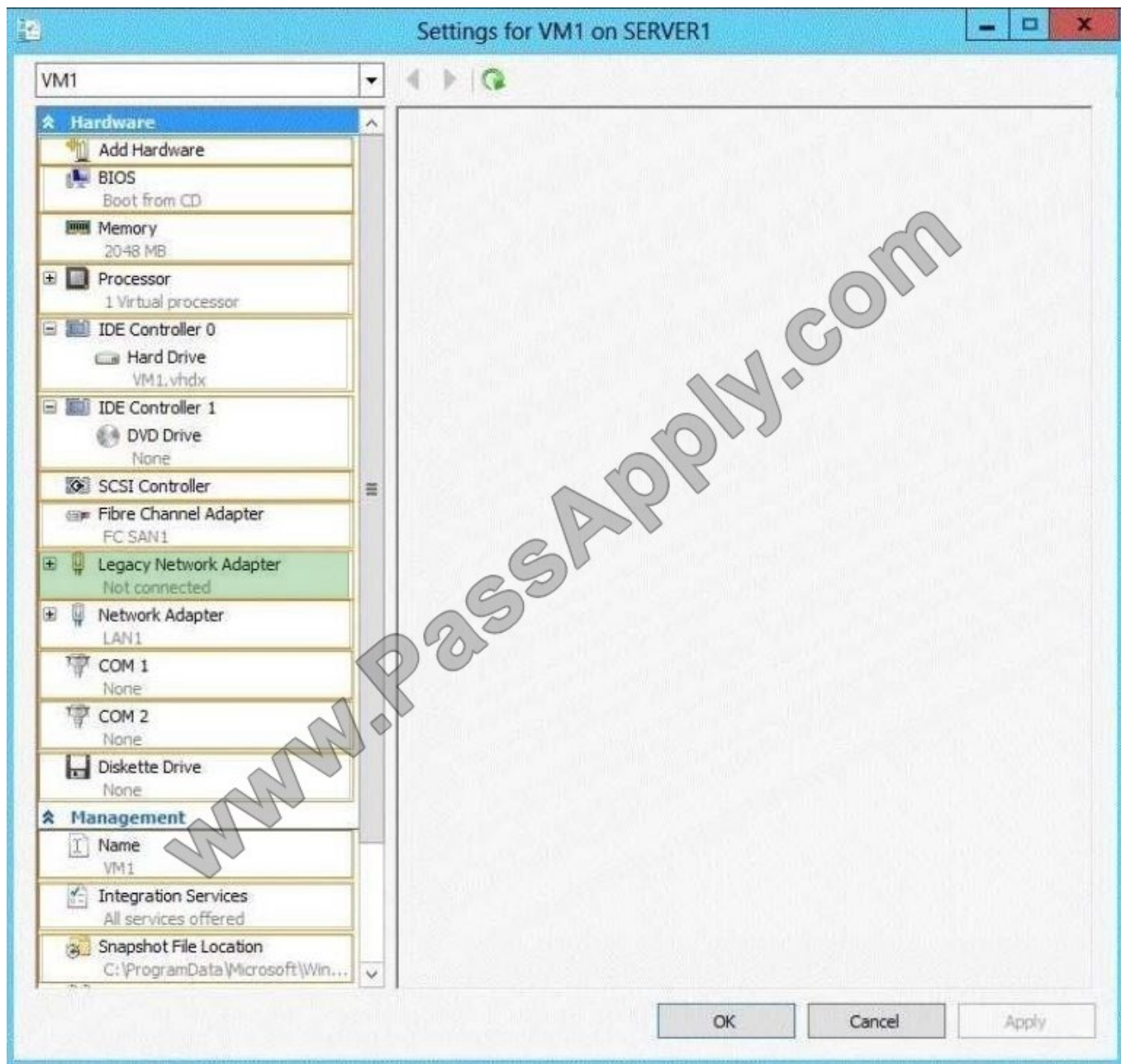
Your network contains two servers named Server1 and Server2 that run Windows Server 2012 R2. Server1 has the Hyper-V server role installed. Server2 has the Windows Deployment Services server role installed. On Server1, you have a virtual machine named VM1. You plan to deploy an image to VM1 by using Windows Deployment Services (WDS). You need to ensure that VM1 can connect to Server1 by using PXE. Which settings should you configure on VM1? To answer, select the appropriate settings in the answer area.



Hot Area:



Correct Answer:



Virtual machines can be deployed to Hyper-V using Windows Deployment Services (WDS). To accomplish this requires the proper WDS infrastructure be in place and that the VM PXE boot using a Legacy Network Adapter.

By default, there is only a "Standard Network Adapter" installed on the Virtual Machine, but for PXE functionality you will need to add a "Legacy Network Adapter".

Go to the "Legacy Network Adapter" that you just added and specify that it should use the Virtual Switch that you just created.

Last but not least, you should change the BIOS boot priority to make sure that the Virtual Machine always tries to boot first using the "Legacy Network Adapter". Just select the "Legacy Network Adapter" and move it to the top using the buttons.

Start your Virtual Machine and now PXE boot should work.



The Pre-Boot Execution Environment (PXE) provider for Windows Deployment Services provides client boot services over the network. It registers itself with the WDS Server service (the main server-side service of the Windows Deployment

Services solution) and requests a remote procedure call (RPC) endpoint.

After the Windows Deployment Services server role is installed, you must configure the server by using either the Windows Deployment Services MMC snap-in or the /Initialize-Server command-line option. The PXE provider must be configured properly before it can provide client boot services over the network.

References:

<http://technet.microsoft.com/en-us/library/cc726550%28v=WS.10%29.aspx>

---

#### QUESTION 4

You have a server named Data1 that runs a Server Core Installation of Windows Server 2012 R2 Standard.

You need to configure Data1 to run a Server Core Installation of Windows Server 2012 R2 Enterprise. You want to achieve this goal by using the minimum amount of administrative effort.

What should you perform?

- A. a clean installation of Windows Server 2012
- B. an offline servicing by using Dism
- C. an online servicing by using Dism
- D. an upgrade installation of Windows Server 2012

Correct Answer: C

References: Training Guide: Installing and Configuring Windows Server 2012 R2: Chapter 2: Deploying Servers, p. 44  
Exam Ref 70-410: Installing and Configuring Windows Server 2012 R2: Chapter 1: Installing and Configuring Servers, p. 19-22

---

#### QUESTION 5

You have a server named Server1 that runs Windows Server 2012 R2. Server1 has the Hyper-V server role installed. On Server1, you create a virtual machine named VM1.

You need to ensure that VM1 can start by using PXE.

What should you do?

- A. Add a second network adapter, and then run the Set-VMNetworkAdapter cmdlet.
- B. Add a second network adapter, and then configure network adapter teaming.
- C. Remove the existing network adapter, and then run the Set-VMNetworkAdapter cmdlet.



D. Remove the existing network adapter, and then add a legacy network adapter.

Correct Answer: D

[70-410 PDF Dumps](#)

[70-410 Study Guide](#)

[70-410 Exam Questions](#)



To Read the [Whole Q&As](#), please purchase the [Complete Version](#) from [Our website](#).

## Try our product !

100% Guaranteed Success

100% Money Back Guarantee

365 Days Free Update

Instant Download After Purchase

24x7 Customer Support

Average 99.9% Success Rate

More than 800,000 Satisfied Customers Worldwide

Multi-Platform capabilities - [Windows](#), [Mac](#), [Android](#), [iPhone](#), [iPod](#), [iPad](#), [Kindle](#)

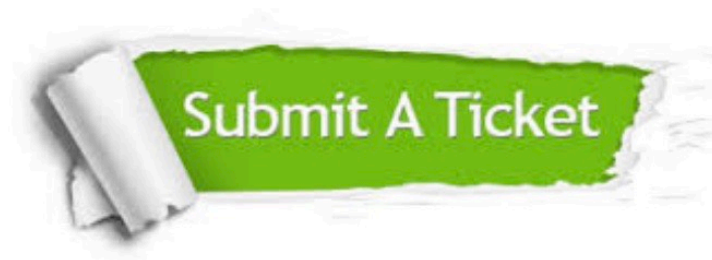
We provide exam PDF and VCE of Cisco, Microsoft, IBM, CompTIA, Oracle and other IT Certifications.  
You can view Vendor list of All Certification Exams offered:

<https://www.passapply.com/allproducts>

## Need Help

Please provide as much detail as possible so we can best assist you.

To update a previously submitted ticket:



 <b>One Year Free Update</b> Free update is available within One Year after your purchase. After One Year, you will get 50% discounts for updating. And we are proud to boast a 24/7 efficient Customer Support system via Email.	 <b>Money Back Guarantee</b> To ensure that you are spending on quality products, we provide 100% money back guarantee for 30 days from the date of purchase.	 <b>Security &amp; Privacy</b> We respect customer privacy. We use McAfee's security service to provide you with utmost security for your personal information & peace of mind.
---	---	--

Any charges made through this site will appear as Global Simulators Limited.

All trademarks are the property of their respective owners.

Copyright © passapply, All Rights Reserved.