



70-342^{Q&As}

Advanced Solutions of Microsoft Exchange Server 2013

Pass Microsoft 70-342 Exam with 100% Guarantee

Free Download Real Questions & Answers **PDF** and **VCE** file from:

<https://www.passapply.com/70-342.html>

100% Passing Guarantee
100% Money Back Assurance

Following Questions and Answers are all new published by Microsoft
Official Exam Center

-  **Instant Download** After Purchase
-  **100% Money Back** Guarantee
-  **365 Days** Free Update
-  **800,000+** Satisfied Customers





QUESTION 1

You need to recommend a solution to ensure that during the planned migrations, all Autodiscover requests are processed by the Exchange Server 2013 Client Access servers. What should you recommend?

- A. On the Exchange Server 2007 Client Access servers, modify the AutodiscoverServiceInternalURI.
- B. On the Exchange Server 2007 Client Access servers, modify the ExternalURL value of the Autodiscover virtual directory.
- C. On the Exchange Server 2013 Client Access servers, modify the ExternalURL value of the Autodiscover virtual directory.
- D. On the Exchange Server 2013 Client Access servers, modify the AutodiscoverServiceInternalURI.

Correct Answer: A

The Exchange Server 2007 Client Access servers must be configured to use the Exchange Server 2013 Client Access server. We do this by setting the AutodiscoverServiceInternalURI property.

QUESTION 2

You have a hybrid deployment of Exchange Server 2013.

All of the users in the Seattle office have mailboxes that are hosted on-premises. All of the users in the Paris office have mailboxes that are hosted in Microsoft Office 365. Azure Rights Management (Azure RMS) is implemented for the Paris office users.

Five of the Seattle office users occasionally receive protected messages from the Paris user. The Seattle office users report that they cannot view the protected content.

You need to recommend a solution to provide the five Seattle office users with the ability to read the protected messages. The solution must minimize costs.

What is the best recommendation to achieve the goal? More than one answer choice may achieve the goal. Select the BEST answer.

- A. RMS for Individuals
- B. Azure RMS
- C. Active Directory Rights Management Services (AD RMS)
- D. Information Rights Management (IRM)

Correct Answer: A

RMS for individuals is a free self-service subscription for users in an organization who have been sent sensitive files that have been protected by Azure Rights Management (Azure RMS), but their IT department has not implemented Azure Rights Management (Azure RMS), or Active Directory Rights Management Services (AD RMS).

Reference: RMS for Individuals and Azure Rights Management <https://technet.microsoft.com/en-us/library/dn592127.aspx>



QUESTION 3

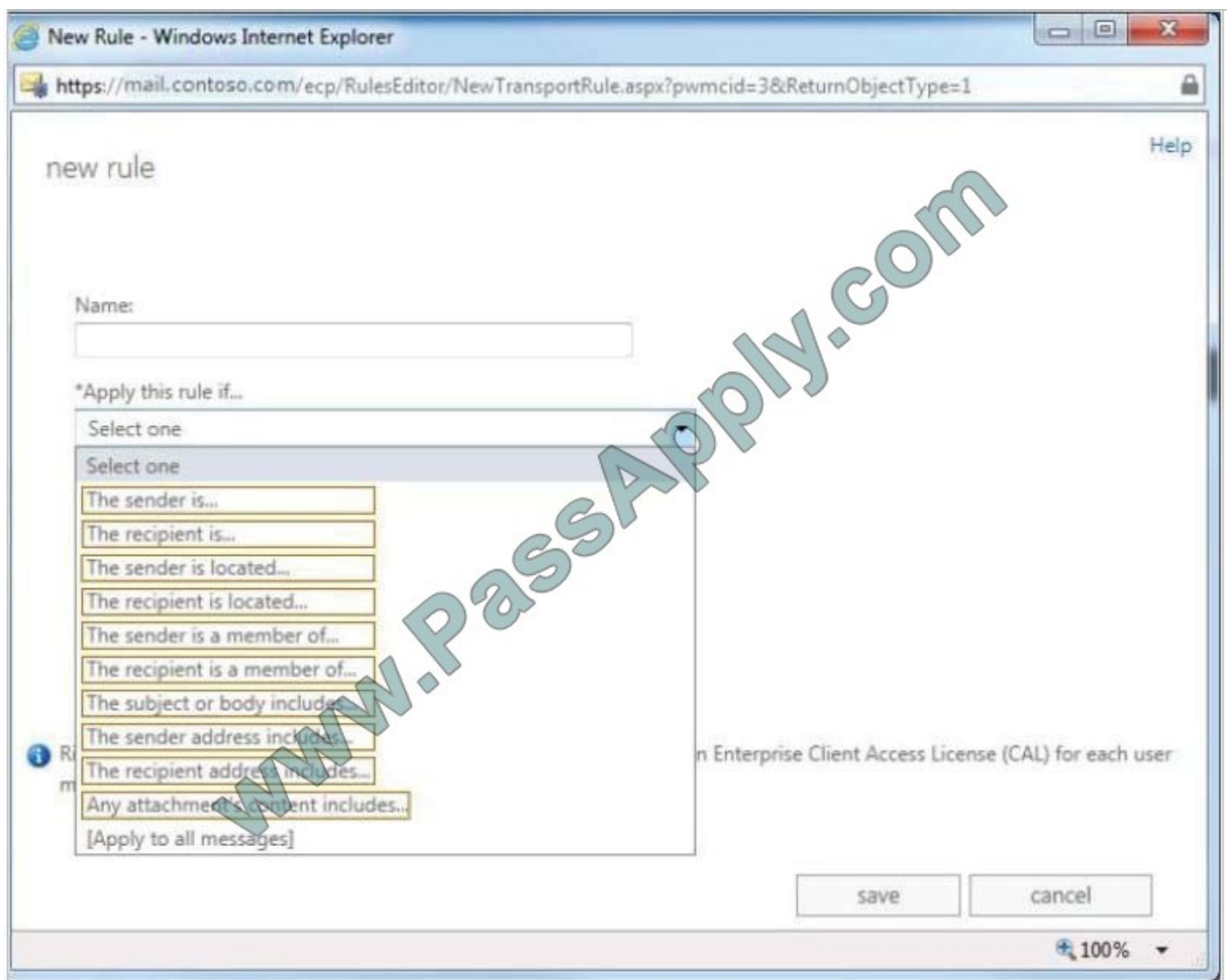
HOTSPOT

You have an Exchange Server 2013 organization.

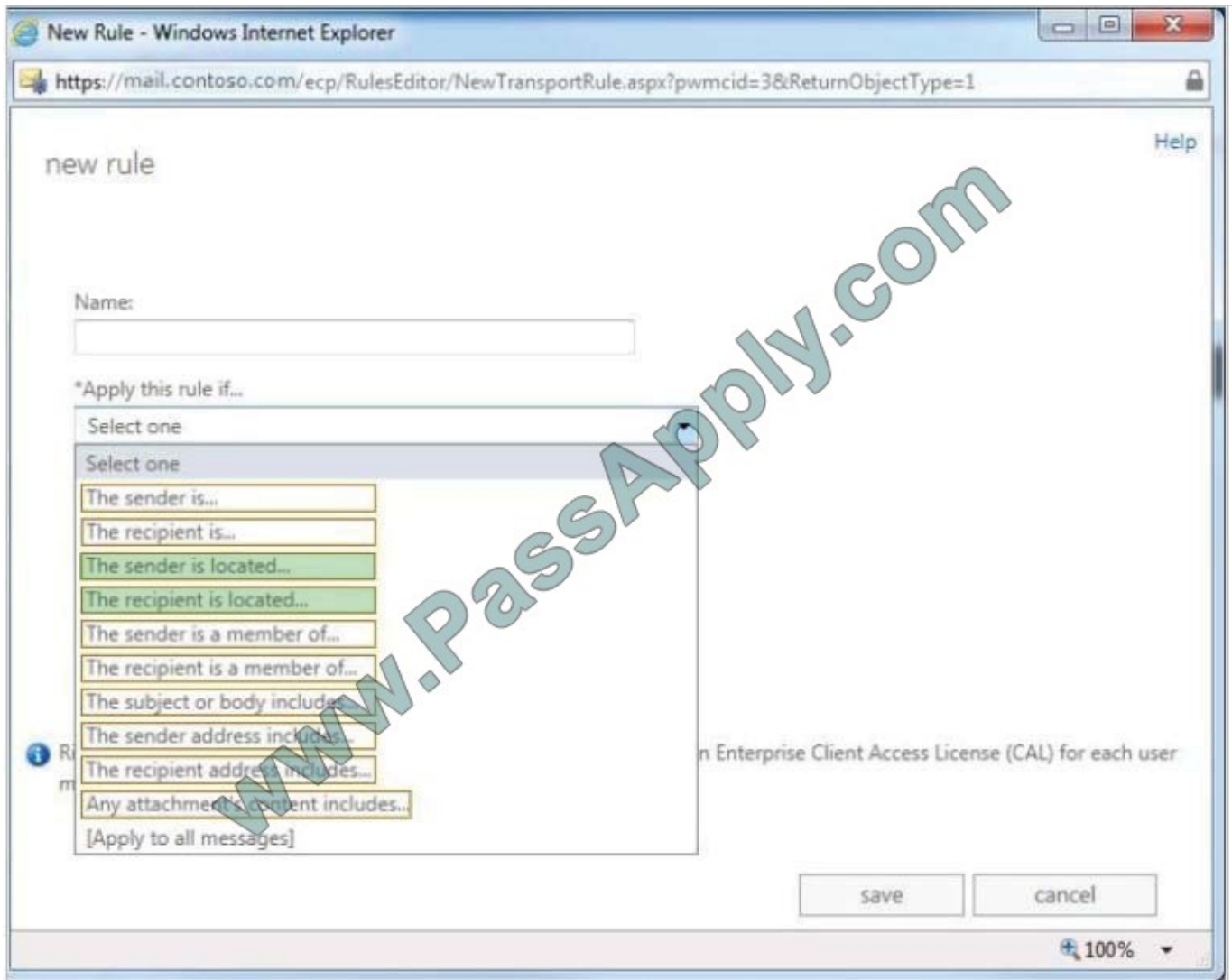
You need to create a single transport rule that applies to messages sent from users in the organization to users that are outside of the organization.

Which two options should you use? To answer, select the two appropriate options in the answer area.

Hot Area:



Correct Answer:



Condition name includes:

* The sender is located

This condition matches messages that are sent by senders within the specified scope such as Inorganization.

* The recipient is located

This condition matches messages that are sent to recipients within the specified scope.

Note: Property values include:

* FromUserScope: Single value of InOrganization or NotInOrganization Single value of InOrganization or NotInOrganization

* ToUserScope One of the following values: InOrganization, NotInOrganization, ExternalPartner, ExternalNonPartner ToUserScope specifies the scope of the recipients. The InOrganization and NotInOrganization values are evaluated similar to the FromUserScope property, but in the context of the recipient.

Reference: Transport rule conditions (predicates) [https://technet.microsoft.com/en-us/library/jj919234\(v=exchg.150\).aspx](https://technet.microsoft.com/en-us/library/jj919234(v=exchg.150).aspx)



QUESTION 4

HOTSPOT

You plan to create two retention tags named Tag1 and Tag2. Tag1 will be used to move email messages to the Archive mailbox. Tag2 will be used to delete the email messages.

You need to identify which settings must be configured in the retention tags to meet the technical requirements.

How should you configure each retention tag?

To answer, configure the appropriate options for each retention tag setting in the answer area.

Hot Area:

Setting	Tag1	Tag2
Retention tag type	<input type="text"/> All Inbox Personal	<input type="text"/> All Inbox Personal
Retention action	<input type="text"/> Move to archive mailbox Permanently delete Delete and allow recovery	<input type="text"/> Move to archive mailbox Permanently delete Move to archive mailbox
Retention period	<input type="text"/> After 30 days After 335 days After 365 days	<input type="text"/> After 30 days After 335 days After 365 days

Correct Answer:



Setting	Tag1	Tag2
Retention tag type	<div style="border: 1px solid black; padding: 2px;"> <div style="text-align: right;">▼</div> <div style="background-color: #e0ffe0; padding: 2px;">All</div> <div style="padding: 2px;">Inbox</div> <div style="padding: 2px;">Personal</div> </div>	<div style="border: 1px solid black; padding: 2px;"> <div style="text-align: right;">▼</div> <div style="background-color: #e0ffe0; padding: 2px;">All</div> <div style="padding: 2px;">Inbox</div> <div style="padding: 2px;">Personal</div> </div>
Retention action	<div style="border: 1px solid black; padding: 2px;"> <div style="text-align: right;">▼</div> <div style="background-color: #e0ffe0; padding: 2px;">Move to archive mailbox</div> <div style="padding: 2px;">Permanently delete</div> <div style="padding: 2px;">Delete and allow recovery</div> </div>	<div style="border: 1px solid black; padding: 2px;"> <div style="text-align: right;">▼</div> <div style="padding: 2px;">Move to archive mailbox</div> <div style="background-color: #e0ffe0; padding: 2px;">Permanently delete</div> <div style="padding: 2px;">Move to archive mailbox</div> </div>
Retention period	<div style="border: 1px solid black; padding: 2px;"> <div style="text-align: right;">▼</div> <div style="background-color: #e0ffe0; padding: 2px;">After 30 days</div> <div style="padding: 2px;">After 335 days</div> <div style="padding: 2px;">After 365 days</div> </div>	<div style="border: 1px solid black; padding: 2px;"> <div style="text-align: right;">▼</div> <div style="padding: 2px;">After 30 days</div> <div style="padding: 2px;">After 335 days</div> <div style="background-color: #e0ffe0; padding: 2px;">After 365 days</div> </div>

* Scenario:

Implement an archiving policy that moves all of the email messages from the mailbox folders to an Archive mailbox after 30 days and permanently deletes all of the email messages after 365 days.

* Both Tag Types should affect all email messages. For the first policy move the archive after 30 days. The second policy should permanently delete the messages after 365 days.

QUESTION 5

You have an Exchange Server organization that contains five servers. The servers are configured as shown in the following table.



Server name	Role	Exchange Server version
Server1	Unified Messaging server	Exchange Server 2010
Server2	Mailbox server	Exchange Server 2013
Server3	Client Access serverHub Transport server	Exchange Server 2010
Server4	Mailbox server	Exchange Server 2010
Server5	Client Access server	Exchange Server 2013

You deploy Microsoft Lync Server 2010. You need to create a Lync Server SIP Unified Messaging (UM) dial plan to enable voice integration between Lync Server and Exchange Server. Which three Exchange servers should you associate to the UM dial plans? (Each correct answer presents part of the solution. Choose three.)

- A. Server1
- B. Server2
- C. Server3
- D. Server4
- E. Server5

Correct Answer: ABE

A: You can enable Unified Messaging (UM) in Microsoft Exchange Server 2010. You must enable the Exchange computer running the Unified Messaging server role before the Unified Messaging server can process calls for UM-enabled

Exchange 2010 recipients in your Exchange organization. However, the Unified Messaging server also must be added to a UM dial plan before it can process calls for Unified Messaging.

B, E:

*

Requirements and Recommendations

Client Access and Mailbox. In Microsoft Exchange Server 2013, Exchange UM runs as a service on these servers.

*

Deploy the Exchange Mailbox server roles in each Exchange Unified Messaging (UM) forest where you want to enable users for Exchange UM. Reference: Configuring Unified Messaging on Microsoft Exchange Server to Work with Lync Server 2013

[70-342 Practice Test](#)

[70-342 Study Guide](#)

[70-342 Exam Questions](#)



To Read the [Whole Q&As](#), please purchase the [Complete Version](#) from [Our website](#).

Try our product !

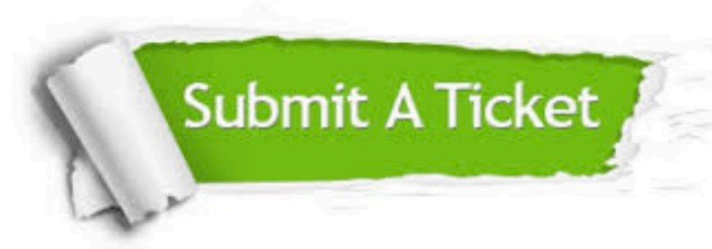
100% Guaranteed Success
100% Money Back Guarantee
365 Days Free Update
Instant Download After Purchase
24x7 Customer Support
Average 99.9% Success Rate
More than 800,000 Satisfied Customers Worldwide
Multi-Platform capabilities - [Windows](#), [Mac](#), [Android](#), [iPhone](#), [iPod](#), [iPad](#), [Kindle](#)

We provide exam PDF and VCE of Cisco, Microsoft, IBM, CompTIA, Oracle and other IT Certifications. You can view Vendor list of All Certification Exams offered:

<https://www.passapply.com/allproducts>

Need Help

Please provide as much detail as possible so we can best assist you.
To update a previously submitted ticket:



 <p>One Year Free Update Free update is available within One Year after your purchase. After One Year, you will get 50% discounts for updating. And we are proud to boast a 24/7 efficient Customer Support system via Email.</p>	 <p>Money Back Guarantee To ensure that you are spending on quality products, we provide 100% money back guarantee for 30 days from the date of purchase.</p>	 <p>Security & Privacy We respect customer privacy. We use McAfee's security service to provide you with utmost security for your personal information & peace of mind.</p>
---	---	--

Any charges made through this site will appear as Global Simulators Limited.
All trademarks are the property of their respective owners.
Copyright © passapply, All Rights Reserved.