



70-341^{Q&As}

Core Solutions of Microsoft Exchange Server

Pass Microsoft 70-341 Exam with 100% Guarantee

Free Download Real Questions & Answers **PDF** and **VCE** file from:

<https://www.passapply.com/70-341.html>

100% Passing Guarantee
100% Money Back Assurance

Following Questions and Answers are all new published by Microsoft
Official Exam Center

-  **Instant Download** After Purchase
-  **100% Money Back** Guarantee
-  **365 Days** Free Update
-  **800,000+** Satisfied Customers





QUESTION 1

You have an Exchange Server 2013 organization that contains two servers named EX1 and EX2.

EX1 and EX2 are the members of a database availability group (DAG) named DAG1.

EX1 and EX2 each contain a copy of a mailbox database named DB1. DB1 is configured to retain deleted items for 120 days.

At the end of each month, the mailbox databases on EX1 are backed up to tape. The monthly backups are retained for two years.

A user named User1 has a mailbox in DB1.

User1 discovers that a mailbox folder that contained important email messages was deleted more than six months ago.

You need to recover the deleted mailbox folder without affecting any other users who have mailboxes in DB1.

Which three actions should you perform? (Each correct answer presents part of the solution. Choose three.)

- A. Run the New-MailboxRestoreRequest cmdlet.
- B. Run the New-MailboxDatabase cmdlet and specify the Recovery parameter.
- C. Restore DB1 from the tape backup to an alternate location.
- D. Restore DB1 from the tape backup to the database's original location.
- E. Run the New-Mailbox cmdlet and specify the Recovery parameter.

Correct Answer: ABC

QUESTION 2

You have an Exchange Server 2013 organization.

An Active Directory administrator is concerned about the permissions assigned to a group named Exchange Trusted Subsystem. Exchange Trusted Subsystem has a member named Exchange Windows Permissions.

You need to show the Active Directory administrator all of the permissions assigned to Exchange Trusted Subsystem.

What should you use?

- A. ADSI Edit
- B. Active Directory Sites and Services
- C. Dsget
- D. Active Directory Users and Computers

Correct Answer: D



QUESTION 3

You need to recommend a solution to meet the technical requirements for email message recovery.

Which command should you include in the recommendation? (To answer, configure the appropriate options in the answer area.)

Hot Area:

Answer Area

<input type="text"/>	<input type="text" value="5.0:00:00"/>
<ul style="list-style-type: none"> Set-MailboxTransportService Set-TransportConfig Set-TransportServer Set-TransportService 	<ul style="list-style-type: none"> -MaxDumpsterTime -MessageExpirationTimeout -SafetyNetHoldTime -ShadowMessageAutoDiscardInterval

Correct Answer:

Answer Area

<input type="text"/>	<input type="text" value="5.0:00:00"/>
<ul style="list-style-type: none"> Set-MailboxTransportService <li style="background-color: #e0ffe0;">Set-TransportConfig Set-TransportServer Set-TransportService 	<ul style="list-style-type: none"> -MaxDumpsterTime -MessageExpirationTimeout <li style="background-color: #e0ffe0;">-SafetyNetHoldTime -ShadowMessageAutoDiscardInterval

Set-MailboxTransportService

Use the Set-MailboxTransportService cmdlet to view the transport configuration information for the Mailbox Transport service on Mailbox servers.

Example 1

This example sets the ReceiveProtocolLogPath parameter to C:\SMTP Protocol Logs\Receive.log for the Mailbox Transport service on server Mailbox01.

```
Set-MailboxTransportService Mailbox01 -ReceiveProtocolLogPath "C:\SMTP Protocol Logs\Receive.log"
```

Set-TransportConfig

Use the Set-TransportConfig cmdlet to modify the transport configuration settings for the whole Exchange organization.

EXAMPLE 1



This example configures the Exchange organization to forward all DSN messages that have the DSN codes 5.7.1, 5.7.2, and 5.7.3 to the postmaster email account.

```
Set-TransportConfig -GenerateCopyOfDSNFor 5.7.1,5.7.2,5.7.3
```

Set-TransportServer

Use the Set-TransportServer cmdlet to set the transport configuration options for the Transport service on Mailbox servers or for Edge Transport servers.

EXAMPLE 1

This example sets the DelayNotificationTimeout parameter to 13 hours on server named Mailbox01.

```
Set-TransportServer Mailbox01 -DelayNotificationTimeout 13:00:00
```

Set-TransportService

Use the Set-TransportService cmdlet to set the transport configuration options for the Transport service on Mailbox servers or for Edge Transport servers.

EXAMPLE 1

This example sets the DelayNotificationTimeout parameter to 13 hours for the Transport service on a Mailbox server named Mailbox01.

```
Set-TransportService Mailbox01 -DelayNotificationTimeout 13:00:00
```

-MaxDumpsterTime

This parameter isn't used by Microsoft Exchange Server 2013. It's only used by Microsoft Exchange 2010 servers in a coexistence environment.

-MessageExpirationTimeout

Not a parameter of Set-TransportConfig

-SafetyNetHoldTime

Parameter of Set-TransportConfig

The SafetyNetHoldTime parameter specifies how long a copy of a successfully processed message is retained in Safety Net.

Unacknowledged shadow copies of messages auto-expire from Safety Net based on adding the values of the SafetyNetHoldTime parameter and the MessageExpirationTimeout parameter on the Set-TransportService cmdlet.

To specify a value, enter it as a time span: dd.hh:mm:ss where d = days, h = hours, m = minutes, and s = seconds.

The default value is 2.00:00:00 or 2 days.

-ShadowMessageAutoDiscardInterval

The ShadowMessageAutoDiscardInterval parameter specifies how long a server retains discard events for shadow messages.



A primary server queues discard events until queried by the shadow server. However, if the shadow server doesn't query the primary server for the duration specified in this parameter, the primary server deletes the queued discard events.

To specify a value, enter it as a time span: dd.hh:mm:ss where d = days, h = hours, m = minutes, and s = seconds.

Valid input for this parameter is 00:00:05 to 90.00:00:00. The default value is 2.00:00:00 or 2 days.

STEPS

1. Set-TransportConfig. Need to use Safety Net and this is a parameter of Set-TransportConfig
2. SafetyNetHoldTime Need to configure Safety Net.

How Safety Net Works

Safety Net can be considered to be having two parts- Shadow Redundancy and Safety Net Redundancy.

While the safety Net keeps a redundant copy of a message after it is successfully processed, shadow redundancy keeps a redundant copy of the message which is in transit. All features of shadow redundancy like transport high availability

boundary, primary messages, primary servers, shadow messages and shadow servers will be applicable to Safety Net.

The Primary Safety Net is applicable for a Mailbox server that holds the primary message before the Transport service completely processes the message. Once the processing of the message is over, the primary server moves the message to the Primary Safety Net from the active queue on the same server.

The Shadow Safety Net is applicable to the Mailbox server which holds the shadow message. Once the shadow server receives the information that the primary server has successfully processed the primary message, the shadow message is moved to the shadow safety net from the shadow queue on the server. For the Shadow Safety Net operation, shadow redundancy should be enabled, and shadow redundancy is enabled by default in Exchange 2013.

QUESTION 4

You have an Exchange Server 2013 organization that contains a server named Server1.

A user named User1 has an administrative assistant named Assistant1. A user named User2 has an administrative assistant named Assistant2.

You need to configure access to Outlook to meet the following requirements:

Assistant1 must be able to send email messages as a User1.

Assistant2 must be able to send email messages on behalf of User2.

Which cmdlets should you use? (To answer, drag the appropriate cmdlets to the correct requirements. Each cmdlet may be used once, more than once, or not at all. You may need to drag the split bar between panes or scroll to view content.)

Select and Place:



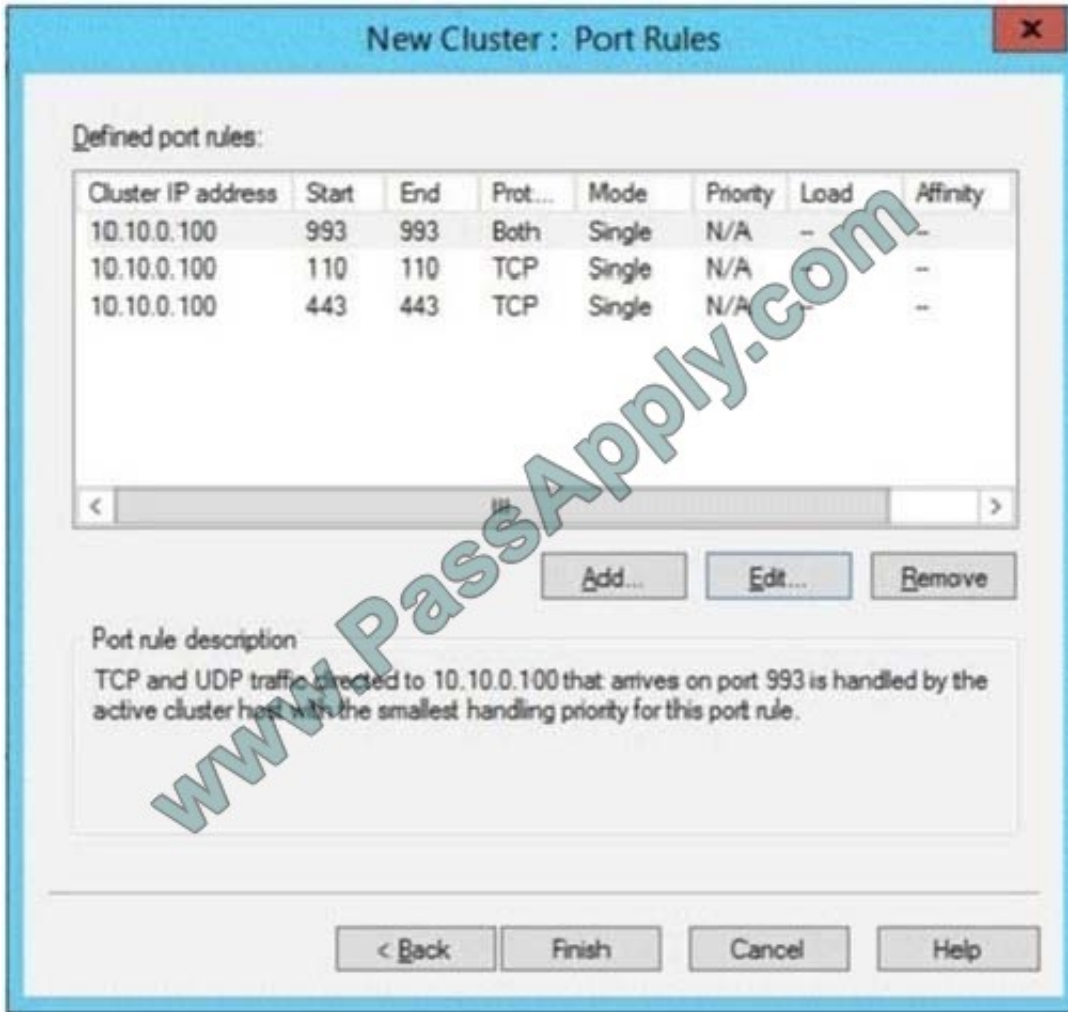
Cmdlets	Answer Area
<input type="button" value="Add-MailboxFolderPermission"/>	Assistant1 must be able to send email messages as User1. <input type="button" value="Cmdlet"/>
<input type="button" value="Add-MailboxPermission"/>	
<input type="button" value="Add-ADPermission"/>	Assistant2 must be able to send email messages on behalf of User2. <input type="button" value="Cmdlet"/>
<input type="button" value="Set-Mailbox"/>	

Correct Answer:

Cmdlets	Answer Area
<input type="button" value="Add-MailboxFolderPermission"/>	Assistant1 must be able to send email messages as User1. <input type="button" value="Add-ADPermission"/>
<input type="button" value="Add-MailboxPermission"/>	
<input type="text"/>	Assistant2 must be able to send email messages on behalf of User2. <input type="button" value="Set-Mailbox"/>
<input type="text"/>	

QUESTION 5

Your network contains three Exchange Server 2013 servers that have the Client Access server role installed. Each server is configured as a POP3 server and an IMAP4 server. You deploy the Network Load Balancing (NLB) feature on the servers and configure NLB as shown in the exhibit (Click the Exhibit button.)



Use the drop-down menus to select the answer choice that completes each statement.

Hot Area:

Answer Area

If a client has an existing connection to 10.10.0.100:443, subsequent connections will be [answer choice]

- received by all of the Client Access servers.
- randomly distributed to a Client Access server.
- processed by the same Client Access server.

Connections that use [answer choice] will NOT be load balanced by NLB.

- IMAP over SSL
- Outlook Anywhere
- PCP3 over SSL

Correct Answer:



Answer Area

If a client has an existing connection to 10.10.0.100:443 subsequent connections will be [answer choice]

Connections that use [answer choice] will NOT be load balanced by NLB.

www.PassApply.com

received by all of the Client Access servers.
randomly distributed to a Client Access server.
processed by the same Client Access server.

IMAP over SSL
Outlook Anywhere
PCP3 over SSL

[70-341 VCE Dumps](#)

[70-341 Study Guide](#)

[70-341 Braindumps](#)



To Read the [Whole Q&As](#), please purchase the [Complete Version](#) from [Our website](#).

Try our product !

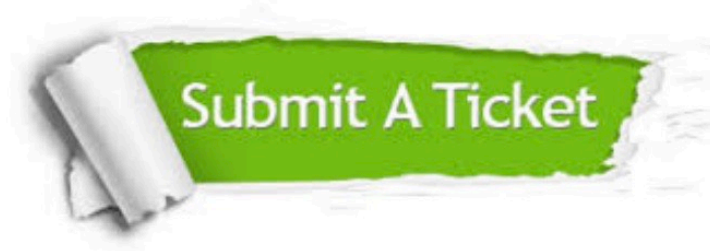
100% Guaranteed Success
100% Money Back Guarantee
365 Days Free Update
Instant Download After Purchase
24x7 Customer Support
Average 99.9% Success Rate
More than 800,000 Satisfied Customers Worldwide
Multi-Platform capabilities - [Windows](#), [Mac](#), [Android](#), [iPhone](#), [iPod](#), [iPad](#), [Kindle](#)

We provide exam PDF and VCE of Cisco, Microsoft, IBM, CompTIA, Oracle and other IT Certifications. You can view Vendor list of All Certification Exams offered:

<https://www.passapply.com/allproducts>

Need Help

Please provide as much detail as possible so we can best assist you.
To update a previously submitted ticket:



 <p>One Year Free Update Free update is available within One Year after your purchase. After One Year, you will get 50% discounts for updating. And we are proud to boast a 24/7 efficient Customer Support system via Email.</p>	 <p>Money Back Guarantee To ensure that you are spending on quality products, we provide 100% money back guarantee for 30 days from the date of purchase.</p>	 <p>Security & Privacy We respect customer privacy. We use McAfee's security service to provide you with utmost security for your personal information & peace of mind.</p>
---	---	--

Any charges made through this site will appear as Global Simulators Limited.
All trademarks are the property of their respective owners.
Copyright © passapply, All Rights Reserved.