



70-336^{Q&As}

Core Solutions of Microsoft Lync Server 2013

Pass Microsoft 70-336 Exam with 100% Guarantee

Free Download Real Questions & Answers **PDF** and **VCE** file from:

<https://www.passapply.com/70-336.html>

100% Passing Guarantee
100% Money Back Assurance

Following Questions and Answers are all new published by Microsoft
Official Exam Center

-  **Instant Download** After Purchase
-  **100% Money Back** Guarantee
-  **365 Days** Free Update
-  **800,000+** Satisfied Customers





QUESTION 1

You need to identify the dial-in conferencing configurations required to meet the technical requirements for the sales department. Which two configurations should you identify? (Each correct answer presents part of the solution. Choose two.)

- A. Create a user-level conferencing policy. Assign the conferencing policy to the sales department users.
- B. Create a user-level dial plan. Assign the dial plan to the sales department users.
- C. Create a new dial-in access number. Assign the dial-in access number to a dial-in conferencing region.
- D. Create a user-level voice policy. Assign the voice policy to the sales department users.
- E. Create a new meeting configuration. Assign the meeting to a site.

Correct Answer: BC

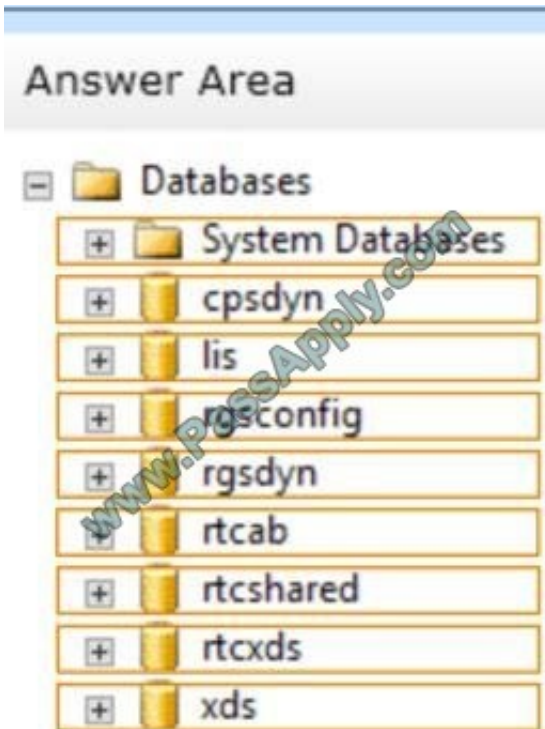
Note:

* The sales department must have a dedicated dial-in conferencing number. All other users in both the United States and Europe must use a pool of regional dial-in conferencing numbers.

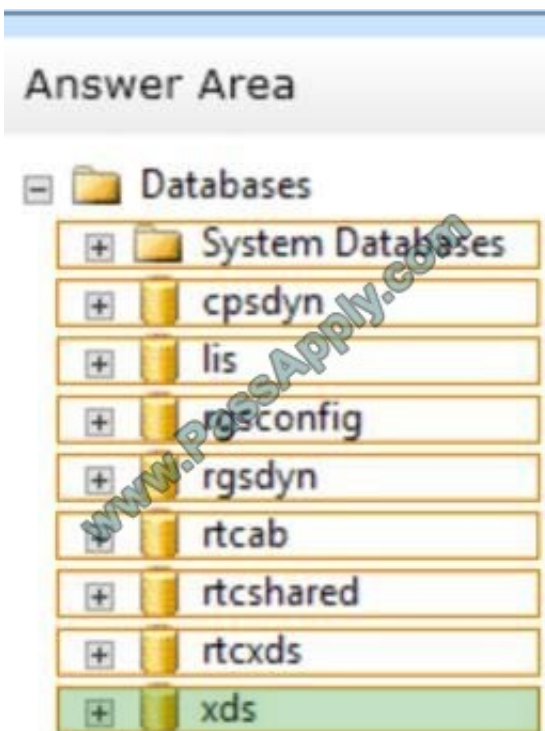
QUESTION 2

You have a server that has Lync Server 2013 Standard Edition deployed. You need to back up the database of the Central Management store. Which database should you back up? To answer, select the appropriate object in the answer area.

Hot Area:



Correct Answer:



QUESTION 3

You need to identify the minimum number of Lync Server 2013 servers and supporting server roles required in each Lync site to meet the business goals and the technical requirements.



How many servers should you identify? (To answer, select the appropriate number servers in the answer area.)

Edge Servers per site:

Front End Servers per site:

Office Web Apps servers per site:

Microsoft SQL Servers per site:

Select four.

- A. Edge Servers per site: 0
- B. Edge Servers per site: 1
- C. Edge Servers per site: 2
- D. Edge Servers per site: 3
- E. Front End Servers per site: 0
- F. Front End Servers per site: 1
- G. Front End Servers per site: 2
- H. Front End Servers per site: 3
- I. Office Web Apps servers per site: 0
- J. Office Web Apps servers per site: 1
- K. Office Web Apps servers per site: 2
- L. Office Web Apps servers per site: 3
- M. Microsoft SQL Servers per site: 0
- N. Microsoft SQL Servers per site: 1
- O. Microsoft SQL Servers per site: 2
- P. Microsoft SQL Servers per site: 3

Correct Answer: CHKP

Contoso must minimize hardware and software purchasing costs, while guaranteeing performance levels for all Lync Server 2013 workloads.

If a single component fails, all Lync services must remain available without the need for manual intervention. Performance degradation is acceptable during a component failure state.



For the number of users, 3 FE servers are required. In the event of a failure, one server could not handle 15,000 users.

SQL mirroring is the recommended database HA solution in Lync 2013. To avoid manual intervention, you need a third server to act as a witness server. You could use a failover cluster using two servers but this tends to be more expensive in

terms of hardware cost.

QUESTION 4

Your company has several offices. The offices are located in one office building. The building is located in Seattle. The company has employees from Europe and North America.

The company has a phone at a security desk.

You implement Lync Server 2013 Enterprise Voice.

You need to implement call routing for emergency calls.

The solution must meet the following requirements:

If a user dials 112, the call must be routed to a phone extension of 0911.

If a user dials 0911, the call must be routed to the phone at the security desk.

The phone at the security desk must be used to forward calls to the emergency number in the Seattle offices only.

What should you use? To answer, drag the appropriate technology to the correct requirement in the answer area. Each technology may be used once, more than once, or not at all. Additionally, you may to drag the split bar between panes or scroll to view content.

Select and Place:

Technologies	Answer Area
a conferencing policy	If a user dials 112, the call must be routed to a phone extension of 0911. Technology
a Contact object	
Enterprise Voice-enabled users	If a user dials 0911, the call must be routed to the phone at the security desk. Technology
an external user access Policy	
a normalization rule	
a voice policy	The phone at the security desk must be used to forward calls to the emergency number in the Seattle offices only. Technology
An unassigned number	

Correct Answer:



Technologies	Answer Area
a conferencing policy	If a user dials 112, the call must be routed to a phone extension of 0911. <input type="text" value="a normalization rule"/>
a Contact object	
Enterprise Voice-enabled users	
an external user access Policy	If a user dials 0911, the call must be routed to the phone at the security desk. <input type="text" value="a normalization rule"/>
a normalization rule	
a voice policy	
An unassigned number	The phone at the security desk must be used to forward calls to the emergency number in the Seattle offices only. <input type="text" value="a voice policy"/>

QUESTION 5

You have a Lync Server 2013 infrastructure that contains four servers. The servers are configured as shown in the following table.

After a network failure, you restore Lync3.

You need to force replication between the servers.

What should you do?

- A. On Lync1, run the Invoke-CsManagementStoreReplication cmdlet.
- B. On Lync1, run the Invoke-CsBackupServiceSync cmdlet.
- C. On Lync3, run the Invoke-CsManagementStoreReplication cmdlet.
- D. On Lync3, run the Invoke-CsBackupServiceSync cmdlet.

Correct Answer: A

<http://technet.microsoft.com/en-us/library/gg413060.aspx>

[Latest 70-336 Dumps](#)

[70-336 PDF Dumps](#)

[70-336 Practice Test](#)



To Read the [Whole Q&As](#), please purchase the [Complete Version](#) from [Our website](#).

Try our product !

100% Guaranteed Success
100% Money Back Guarantee
365 Days Free Update
Instant Download After Purchase
24x7 Customer Support
Average 99.9% Success Rate
More than 800,000 Satisfied Customers Worldwide
Multi-Platform capabilities - [Windows](#), [Mac](#), [Android](#), [iPhone](#), [iPod](#), [iPad](#), [Kindle](#)

We provide exam PDF and VCE of Cisco, Microsoft, IBM, CompTIA, Oracle and other IT Certifications. You can view Vendor list of All Certification Exams offered:

<https://www.passapply.com/allproducts>

Need Help

Please provide as much detail as possible so we can best assist you.
To update a previously submitted ticket:



 <p>One Year Free Update Free update is available within One Year after your purchase. After One Year, you will get 50% discounts for updating. And we are proud to boast a 24/7 efficient Customer Support system via Email.</p>	 <p>Money Back Guarantee To ensure that you are spending on quality products, we provide 100% money back guarantee for 30 days from the date of purchase.</p>	 <p>Security & Privacy We respect customer privacy. We use McAfee's security service to provide you with utmost security for your personal information & peace of mind.</p>
---	---	--

Any charges made through this site will appear as Global Simulators Limited.
All trademarks are the property of their respective owners.
Copyright © passapply, All Rights Reserved.