



70-246^{Q&As}

Private Cloud Monitoring and Operations with System Center

Pass Microsoft 70-246 Exam with 100% Guarantee

Free Download Real Questions & Answers **PDF** and **VCE** file from:

<https://www.passapply.com/70-246.html>

100% Passing Guarantee
100% Money Back Assurance

Following Questions and Answers are all new published by Microsoft
Official Exam Center

-  **Instant Download** After Purchase
-  **100% Money Back** Guarantee
-  **365 Days** Free Update
-  **800,000+** Satisfied Customers





QUESTION 1

Your company has a private cloud that is managed by using a System Center 2012 infrastructure.

The network contains a Service Manager infrastructure.

The company implements a service level agreement (SLA) for the private cloud.

You need to recommend an escalation notification solution for when an SLA warning threshold is exceeded.

What should you include in the recommendation?

- A. A subscription
- B. A Desired Configuration Management Event Workflow Configuration
- C. An incident event workflow
- D. A monitor
- E. A rule

Correct Answer: C

You can use the following procedure to create a workflow rule that will change the support tier to Tier 2 whenever the Urgency property of an incident that is related to printing problems is changed to High.

This procedure assumes that you already created an incident template to change the support tier to Tier 2, and it assumes that you already created the priority calculation table.

For more information, see [How to Set Incident Priority](http://technet.microsoft.com/en-us/library/ff461123.aspx) and "To create a new printer-related incident template" in [How to Create Incident Templates](http://technet.microsoft.com/en-us/library/ff461123.aspx). <http://technet.microsoft.com/en-us/library/ff461123.aspx>

QUESTION 2

Your company has a private cloud that contains a System Center 2012 R2 infrastructure.

You plan to use service level objectives (SLOs) to monitor the network resources.

In the table below, identify which type of SLO should be used to achieve each SLO goal.

Make only one selection in each row.

Hot Area:



SLO	Monitor state SLO	Collection rule SLO
Availability	<input type="checkbox"/>	<input type="checkbox"/>
Performance	<input type="checkbox"/>	<input type="checkbox"/>
Events	<input type="checkbox"/>	<input type="checkbox"/>
Security	<input type="checkbox"/>	<input type="checkbox"/>

Correct Answer:

SLO	Monitor state SLO	Collection rule SLO
Availability	<input checked="" type="checkbox"/>	<input type="checkbox"/>
Performance	<input type="checkbox"/>	<input checked="" type="checkbox"/>
Events	<input checked="" type="checkbox"/>	<input type="checkbox"/>
Security	<input checked="" type="checkbox"/>	<input type="checkbox"/>

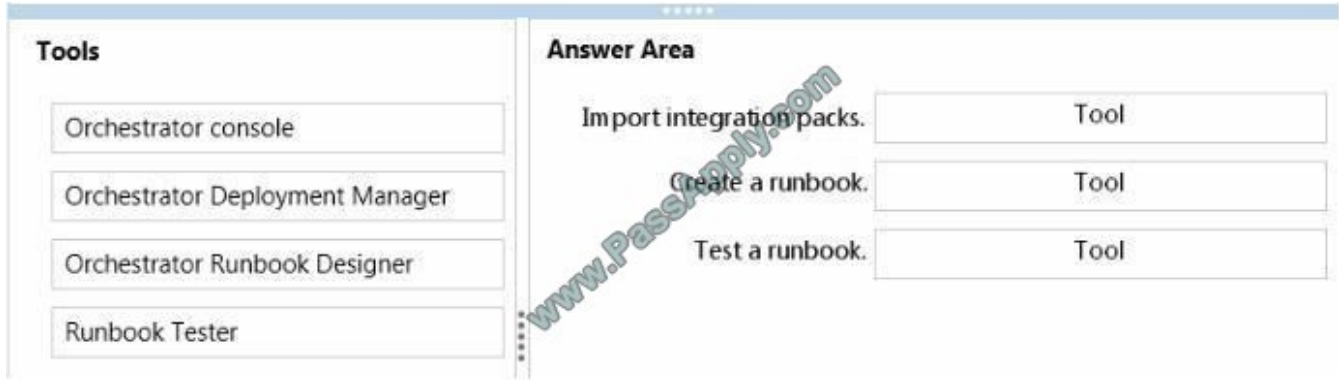
QUESTION 3

You need to implement and test the runbook-based solution.

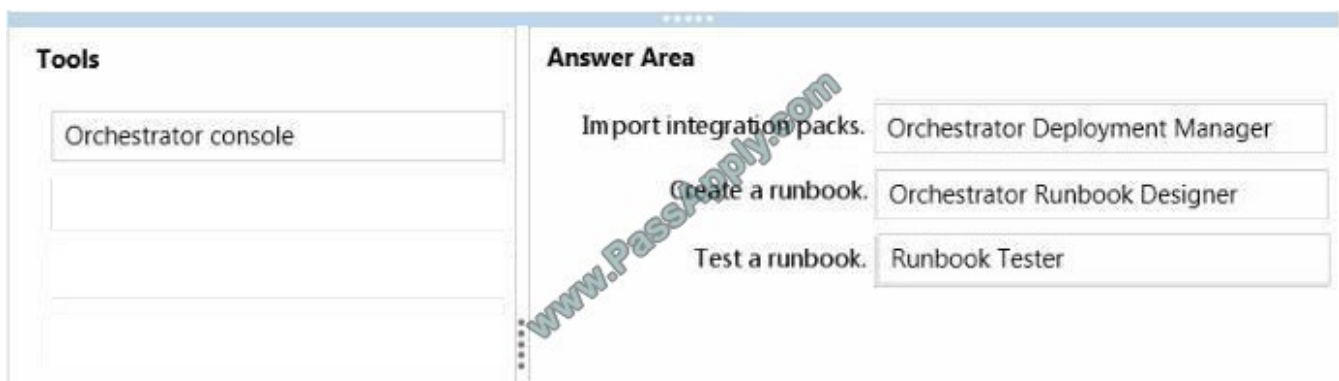
Which tools should you use for each task? To answer, drag the appropriate tools to the correct tasks. Each tool may be used once, more than once, or not at all.

You may need to drag the split bar between panes or scroll to view content.

Select and Place:



Correct Answer:



QUESTION 4

Your company has a datacenter in Los Angeles.

The datacenter contains a private cloud that is managed by a System Center 2012 Virtual Machine Manager (VMM) infrastructure.

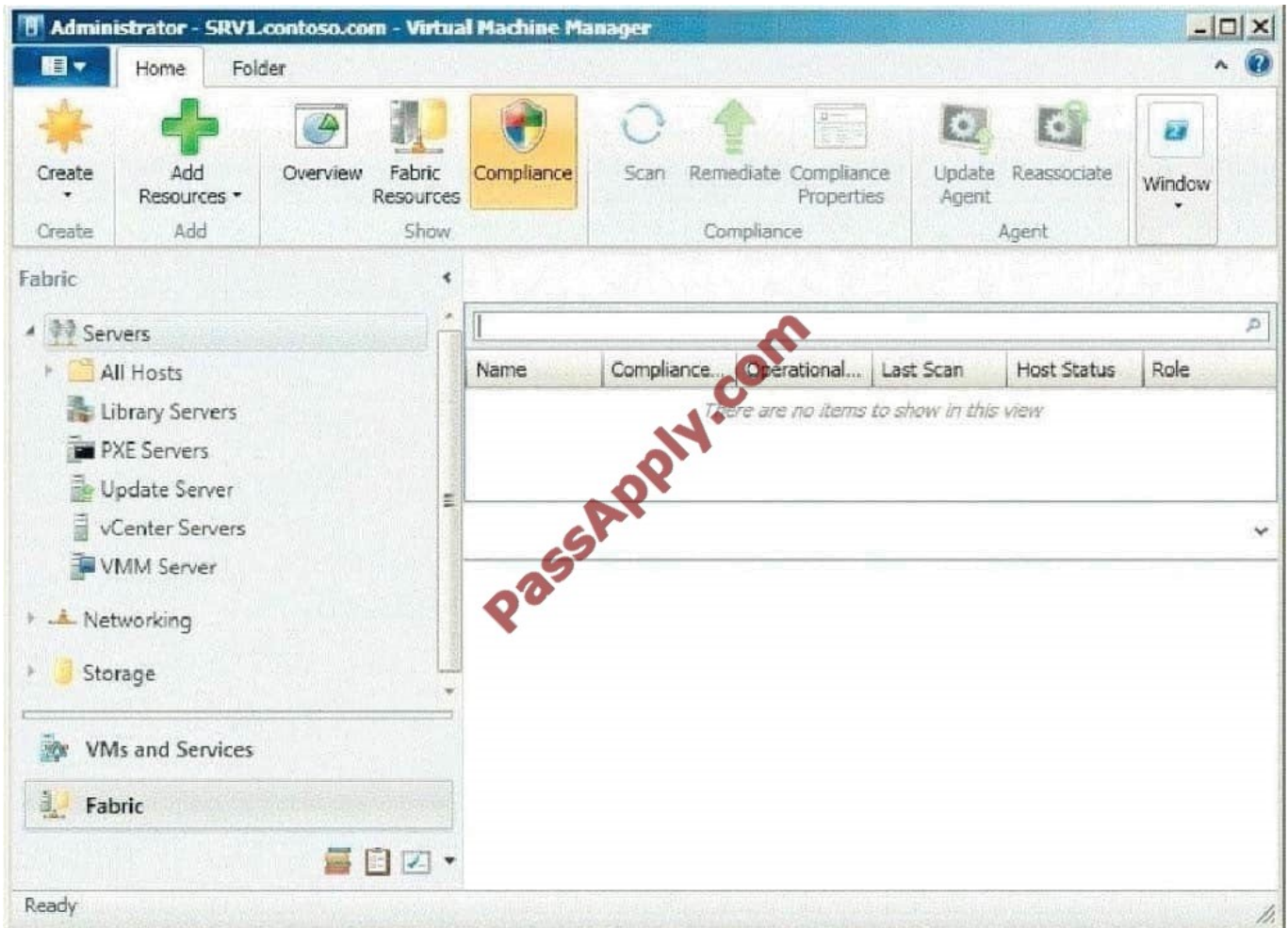
The infrastructure contains two management servers and 10 Hyper-V hosts.

You configure VMM to use an update server and to synchronize the updates by using a windows Server

Update Services (WSUS) server named WSUS1.

You attempt to verify compliance with the Sample Baseline for Security Updates.

You view the console as shown in the exhibit. (Click the Exhibit button.)



You need to ensure that you can verify compliance for all of the Hyper-V hosts. What should you modify?

- A. the update classifications of the update server
- B. the Assignment Scope of the baseline
- C. the default configuration provider
- D. the Network settings of the All Hosts host group

Correct Answer: B

In the VMM console, open the Fabric workspace.

On the Home tab, in the Add group, click Add Resources, and then click Update Server. The Add Windows Server Update Services Server dialog box opens.

In Computer name, enter the fully qualified domain name (FQDN) of the WSUS server (for example, VMMServer01.contoso.com). Specify which TCP/IP port that the WSUS website listens on for connections (for example, port 8530).

Enter credentials for connecting to the WSUS server. The account must have administrator rights on the WSUS server. If necessary, select the Use Secure Socket Layer (SSL) to communicate with the WSUS server and client\\'s check box.



Click Add.

The WSUS server will be added to VMM, followed by initial synchronization of the updates catalog.

Depending on how many update classifications and products you chose when you installed the WSUS server, this operation can take a long time, depending on such factors as network traffic and the load on the WSUS server.

To find out the status of the operation, monitor the status of the Add Update Server and Synchronize Update Server jobs in the Jobs window or in the Jobs workspace.

Note

After you enable update management in VMM, you should manage the WSUS server only through VMM, unless you are using a WSUS server in a Configuration Manager environment. To verify that the WSUS server was added to VMM

successfully:

In the Fabric workspace, on the Fabric pane, expand Servers, and click Update Server.

The results pane should display the WSUS server.

In the Library workspace, on the Library pane, expand Update Catalog and Baselines, and then click Update Catalog.

The results pane should display the updates that were downloaded during WSUS synchronization.

QUESTION 5

You need to recommend a solution to monitor all of the virtual machines by using Operations Manager.

What should you include in the recommendation? (More than one answer choice may achieve the goal. Select the BEST answer.)

- A. Agents deployed by using the Discovery Wizard
- B. Agentless monitoring
- C. Agents installed manually from a Windows Installer package
- D. Agents installed from the command line

Correct Answer: A

[70-246 PDF Dumps](#)

[70-246 VCE Dumps](#)

[70-246 Study Guide](#)



To Read the [Whole Q&As](#), please purchase the [Complete Version](#) from [Our website](#).

Try our product !

100% Guaranteed Success
100% Money Back Guarantee
365 Days Free Update
Instant Download After Purchase
24x7 Customer Support
Average 99.9% Success Rate
More than 800,000 Satisfied Customers Worldwide
Multi-Platform capabilities - [Windows](#), [Mac](#), [Android](#), [iPhone](#), [iPod](#), [iPad](#), [Kindle](#)

We provide exam PDF and VCE of Cisco, Microsoft, IBM, CompTIA, Oracle and other IT Certifications. You can view Vendor list of All Certification Exams offered:

<https://www.passapply.com/allproducts>

Need Help

Please provide as much detail as possible so we can best assist you.
To update a previously submitted ticket:



 <p>One Year Free Update Free update is available within One Year after your purchase. After One Year, you will get 50% discounts for updating. And we are proud to boast a 24/7 efficient Customer Support system via Email.</p>	 <p>Money Back Guarantee To ensure that you are spending on quality products, we provide 100% money back guarantee for 30 days from the date of purchase.</p>	 <p>Security & Privacy We respect customer privacy. We use McAfee's security service to provide you with utmost security for your personal information & peace of mind.</p>
---	---	--

Any charges made through this site will appear as Global Simulators Limited.
All trademarks are the property of their respective owners.
Copyright © passapply, All Rights Reserved.