



70-243^{Q&As}

Administering and Deploying System Center 2012 Configuration Manager

Pass Microsoft 70-243 Exam with 100% Guarantee

Free Download Real Questions & Answers **PDF** and **VCE** file from:

<https://www.passapply.com/70-243.html>

100% Passing Guarantee
100% Money Back Assurance

Following Questions and Answers are all new published by Microsoft Official Exam Center

-  **Instant Download** After Purchase
-  **100% Money Back** Guarantee
-  **365 Days** Free Update
-  **800,000+** Satisfied Customers





QUESTION 1

HOTSPOT

You have a System Center 2012 R2 Configuration Manager Service Pack 1 (SP1) deployment.

The relevant Configuration Manager client computers are configured as shown in the following table.

Computer name	RAM	Operating system	User
Client1	2 GB	Windows 7	User1
Client2	4 GB	Windows 8.1	User2

You create a user collection named Collection1. You add User1 and User2 to Collection1.

You create an application named App1. App1 has one deployment type and the following requirements:

- Total physical memory: Greater than or equal to 2,000 MB
- Operating system: Windows 7 or Windows 8

You deploy App1 to Collection1 as a required deployment. The deadline is set to the default.

You need to identify which status will appear for the App1 deployment before the users log on to a computer and after the users log on to the computer.

What should you identify? To answer, select the appropriate options in the answer area.

Hot Area:



Answer Area

Before User1 and User2 log on to a client computer

Success:

0	▲▼
1	
2	

In progress:

0	▲▼
1	
2	

Requirements not met:

0	▲▼
1	
2	

Unknown:

0	▲▼
1	
2	

Four hours after User1 and User2 log on to the computer:

Success:

0	▲▼
1	
2	

In progress:

0	▲▼
1	
2	

Requirements not met:

0	▲▼
1	
2	

Unknown:

0	▲▼
1	
2	

Correct Answer:

Answer Area

Before User1 and User2 log on to a client computer

Success:

0	▲▼
1	
2	

In progress:

0	▲▼
1	
2	

Requirements not met:

0	▲▼
1	
2	

Unknown:

0	▲▼
1	
2	

Four hours after User1 and User2 log on to the computer:

Success:

0	▲▼
1	
2	

In progress:

0	▲▼
1	
2	

Requirements not met:

0	▲▼
1	
2	

Unknown:

0	▲▼
1	
2	



QUESTION 2

DRAG DROP

Your network contains a System Center 2012 Configuration Manager environment.

You create a collection named All Marketing Users.

You need to inventory the desktop settings of the All Marketing Users collection.

What should you do?

To answer, move the four appropriate actions from the list of actions to the answer area and arrange them in the correct order.

Select and Place:

Create a custom client user setting named Env.

Create a custom client device setting named Env.

Deploy the Env custom setting to the All Marketing Users collection.

In the Env custom setting, select **User Device Affinity**.

In the Envcustom setting, select **Hardware Inventory**.

In the Envcustom setting, select **Desktop (Win32_Desktop)**.

In the Envcustom setting, select **Environment (Win32_Environment)**.

Correct Answer:

Create a custom client user setting named Env.

In the Env custom setting, select **User Device Affinity**.

In the Envcustom setting, select **Environment (Win32_Environment)**.

Create a custom client device setting named Env.

In the Envcustom setting, select **Hardware Inventory**.

In the Envcustom setting, select **Desktop (Win32_Desktop)**.

Deploy the Env custom setting to the All Marketing Users collection.

* Win32_Environmentclass (Windows)

The Win32_Environment WMI class represents an environment or system environmentsetting on a Windows computer

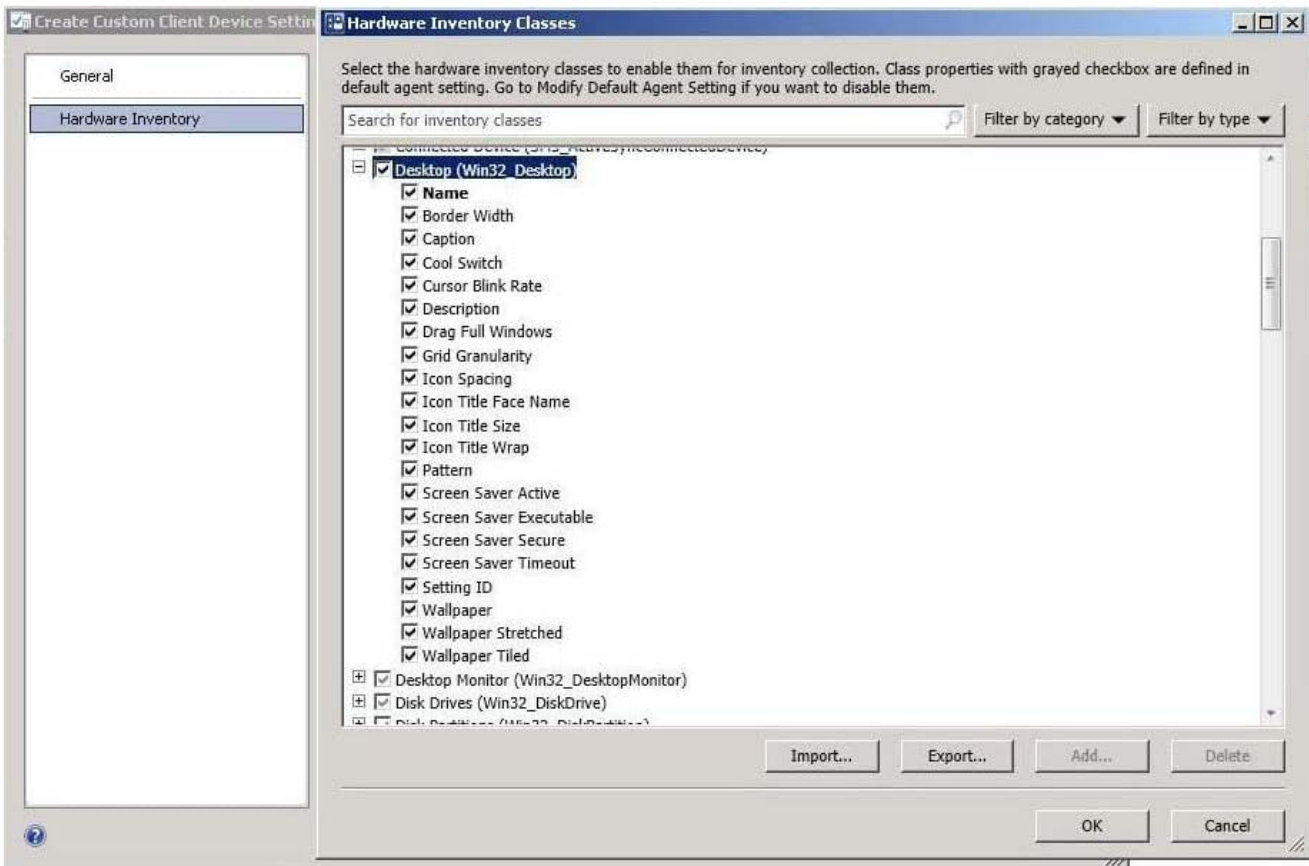
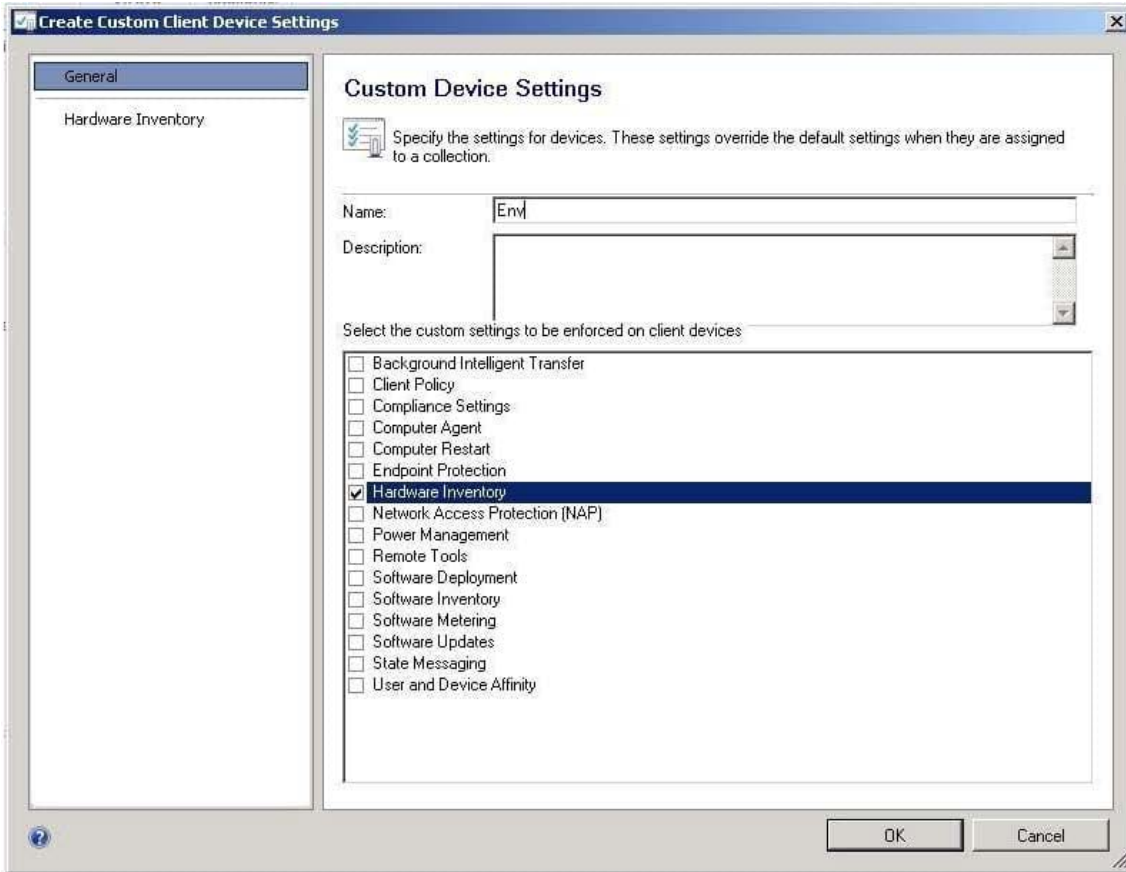


system. Querying this class returns environment variables found in:

HKEY_LOCAL_MACHINE\System\CurrentControlSet\Control\Sessionmanager\Environment

And HKEY_USERS\Environment

Since we need to inventory WMI information, that means we need Hardware Inventory and you can only do that with a Custom Client Device Setting:



QUESTION 10
DRAG DROP



QUESTION 3

HOTSPOT

You manage a System Center 2012 R2 Configuration Manager Service Pack 1 (SP1) stand-alone primary site. The deployment contains the servers configured as shown in the following table.

Server name	Configuration
Server1	Site server
Server2	Distribution point
Server3	SMS Provider
Server4	Reporting services point
Server5	Management point
Server6	Site database server

You are troubleshooting the hardware inventory flow from a Windows 8.1 computer named Client1. You need to verify whether the following events have occurred:

- The inventory files were uploaded from Client1.
- The inventory data was added to the site database.

Which log should you verify for each event? To answer, select the appropriate options in the answer area.

Hot Area:

Answer Area

The inventory files were uploaded from Client1:

▼

Datatransferservice.log on Client1

Invproc.log on Server1

Mp_hinv.log Server5

The application event log on Server3

The inventory data was added to the site database:

▼

Dataldr.log Server1

Datatransferservice.log on Client1

Invproc.log on Server1

Mp_hinv.log Server5

Correct Answer:



Answer Area

The inventory files were uploaded from Client1:

	▼
Datatransferservice.log on Client1	
Invproc.log on Server1	
Mp_hinv.log Server5	
The application event log on Server3	

The inventory data was added to the site database:

	▼
Datadr.log.Server1	
Datatransferservice.log on Client1	
Invproc.log on Server1	
Mp_hinv.log Server5	

*

Box 1:

MP_Hinv.log records details about the conversion of XML hardwareinventory records from clients and the copy of those files to the site server.

*

Box 2:

datadr.log records information about the processing of Management Information Format (MIF) files and hardware inventory in the Configuration Manager database.

Is placed on the site server.

QUESTION 4

DRAG DROP

You have a System Center 2012 R2 Configuration Manager Service Pack 1 (SP1) deployment that contains the servers configured as shown in the following table.

Server name	Configuration	Site
Server1	Central Administration site	C00
Server2	Primary site server	C01
Server3	Secondary site server Windows Server Update Services (WSUS)	C02
Server4	Windows Server Update Services (WSUS)	C01
Server5	Windows Server Update Services (WSUS)	C01

You need to ensure that Server3, Server4, and Server5 can be used to deploy software updates to Configuration Manager clients. The Configuration Manager clients in the primary site must be able to receive updates if one of the WSUS

servers becomes unavailable.



Which four actions should you perform in sequence? To answer, move the appropriate actions from the list of actions to the answer area and arrange them in the correct order.

Select and Place:

Actions		Answer Area
Install WSUS on Server1.		
Add a software update point on Server1.		
Add a software update point on Server2.		
Add a software update point on Server3.	➤	⬆
Add a software update point on Server4 and Server5.	⬅	⬇
Install Network Load Balancing (NLB) on Server3 and Server4.		

Correct Answer:

Actions		Answer Area
		Install WSUS on Server1.
		Add a software update point on Server1.
Add a software update point on Server2.		Add a software update point on Server4 and Server5.
		Add a software update point on Server3.
	⬅	⬇
Install Network Load Balancing (NLB) on Server3 and Server4.		

Box 1: Install WSUS on Server1.

Box 2: Add a software update point on Server1.

Box 3: Add a software update point on Server4 and Server5.

Box 4: Add a software update point on Server3.

Note:

*

The software update point is required on the central administration site and on the primary sites to enable the software updates compliance assessment and to deploy software updates to clients. The software update point is optional on secondary sites.

*



When you have a Configuration Manager hierarchy, install and configure the software update point at the central administration site first, and then install and configure the software update pointson other sites.

QUESTION 5

DRAG DROP

Your network contains a System Center 2012 R2 Configuration Manager Service Pack 1 (SP1) environment.

You create a collection named All Managed Servers.

You need to inventory the environment variables of the All Managed Servers collection.

Which four actions should you perform in sequence? To answer, move the appropriate actions from the list of actions to the answer area and arrange them in the correct order.

Select and Place:

Available actions (left side):

- Create a custom client user setting named Env.
- Create a custom client device setting named Env.
- Deploy the Env custom setting to the All Managed Servers collection.
- In the Env custom setting, select **User Device Affinity**.
- In the Envcustom setting, select **Hardware Inventory**.
- In the Envcustom setting, select **Desktop (Win32_Desktop)**.
- In the Envcustom setting, select **Environment (Win32_Environment)**.

Correct Answer:

Correct Answer sequence (right side):

- Create a custom client user setting named Env.
- In the Envcustom setting, select **Hardware Inventory**.
- In the Envcustom setting, select **Environment (Win32_Environment)**.
- Deploy the Env custom setting to the All Managed Servers collection.



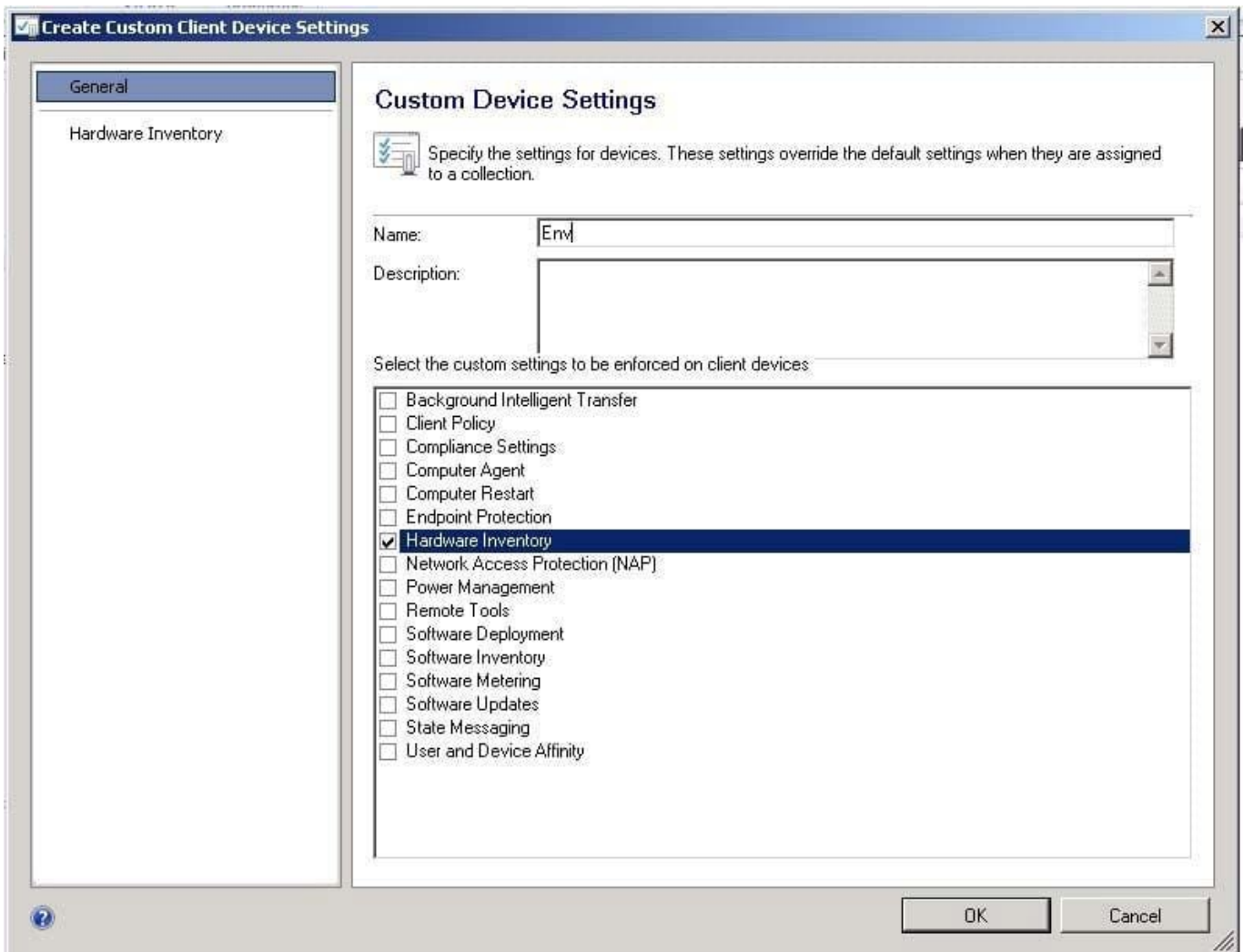
* Win32_Environment class (Windows)

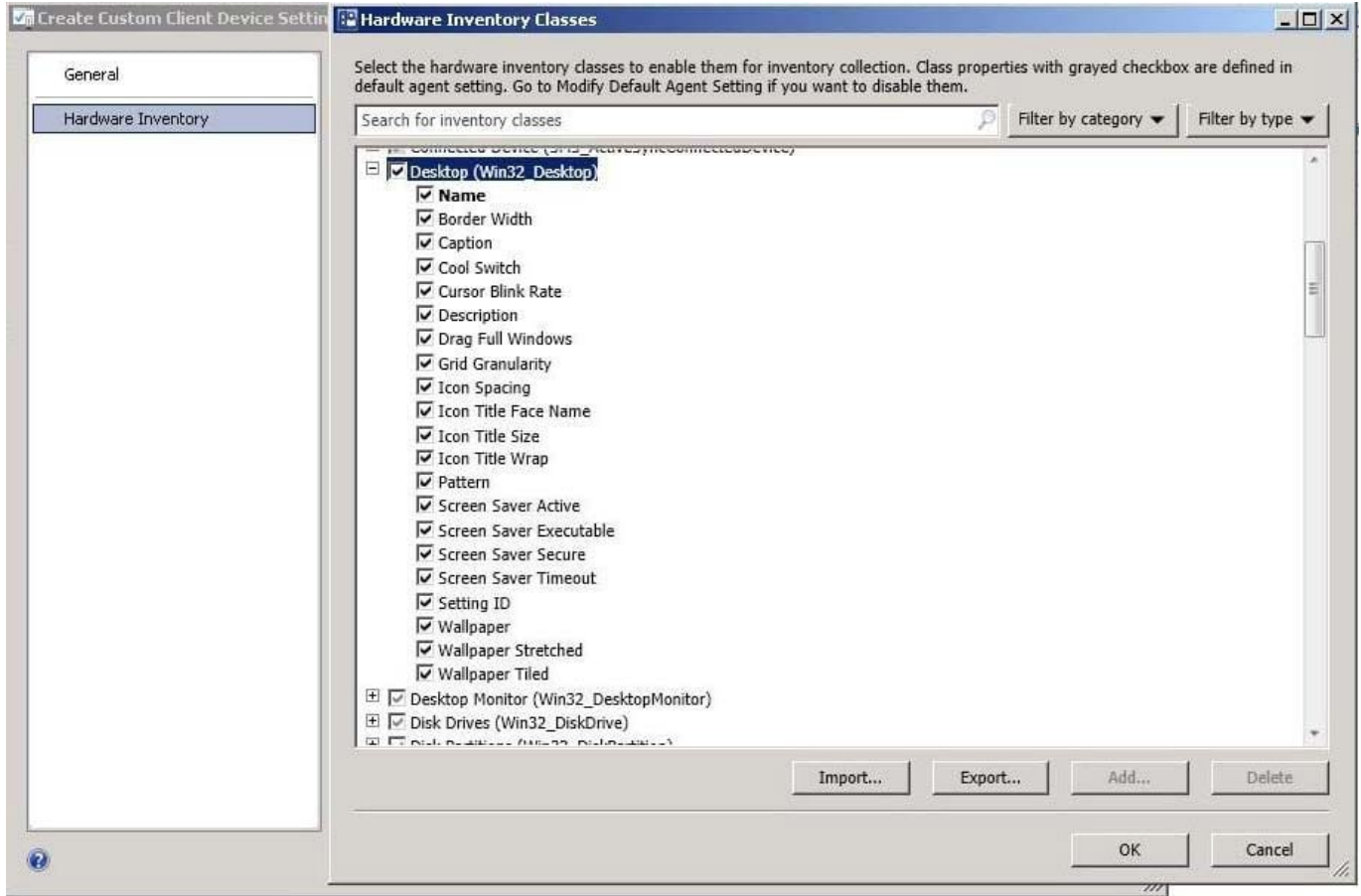
TheWin32_Environment WMI class represents an environment or system environment setting on a Windows computer system. Querying this class returns environment variables found in:

HKEY_LOCAL_MACHINE\System\CurrentControlSet\Control\Sessionmanager\Environment

And HKEY_USERS\Environment

Since we need to inventory WMI information, that means we need Hardware Inventory and you can only do that with a Custom Client Device Setting:





[Latest 70-243 Dumps](#)

[70-243 Practice Test](#)

[70-243 Exam Questions](#)