



650-127^{Q&As}

Cisco Connected Grid (Engineer) Knowledge Verification

Pass Cisco 650-127 Exam with 100% Guarantee

Free Download Real Questions & Answers **PDF** and **VCE** file from:

<https://www.passapply.com/650-127.html>

100% Passing Guarantee
100% Money Back Assurance

Following Questions and Answers are all new published by Cisco
Official Exam Center

-  **Instant Download** After Purchase
-  **100% Money Back** Guarantee
-  **365 Days** Free Update
-  **800,000+** Satisfied Customers





QUESTION 1

What is the benefit of phasor measurement unit data?

- A. Workstations clock sync
- B. improves grid stability
- C. Time tag on all event

Correct Answer: B

Use Case 3: Benefits and Main Requirements

Phasor Measurement Unit Data

Use Case	Description	Customer Benefits	Main Network Requirements
3	Substation Automation with Phasor Measurement Unit (PMU)	<ul style="list-style-type: none">• Improved grid stability through real-time monitoring following system event• PMU triggers alarms and provides recommendations for system operator• Accurately measures voltage and current waveforms on lines• Provides additional data for post-fault analysis	<ul style="list-style-type: none">• Fast network convergence• QoS: Prioritization and potentially very low latency (for real-time PMU data use)• Broadband and fiber• Network security

QUESTION 2

What is the total support wattage on CGS-2520-16S-8PC on PoE when two power supplies are installed?

- A. 170 W
- B. 65 W
- C. 20 W
- D. 210 W

Correct Answer: A



Power Over Ethernet Support

- PoE is supported only in CGS-2520-16S-8PC.
 - Architecture is similar to Catalyst 3750E family switches.
 - One Power Supply can support up to 65W and two Power Supplies support up to 170W of PoE.
 - Powering all the 8 FE ports will require 2 Power Supplies.
 - If one Power Supply fails, ports configured as "priority ports" will continue to receive power. The low priority PoE ports may not get PoE or lose power.
 - Enhanced PoE is supported – up to 20 Watts.
 - PoE+ will not be supported at FCS.
-

QUESTION 3

What are the two different types of console ports available? (Choose two.)

- A. Network
- B. USB
- C. RJ45
- D. Firewall

Correct Answer: BC

QUESTION 4

How many types of power supply are available for CGS and CGR products?

- A. 1type
- B. 2 types



C. 3 types

D. 4 types

Correct Answer: B

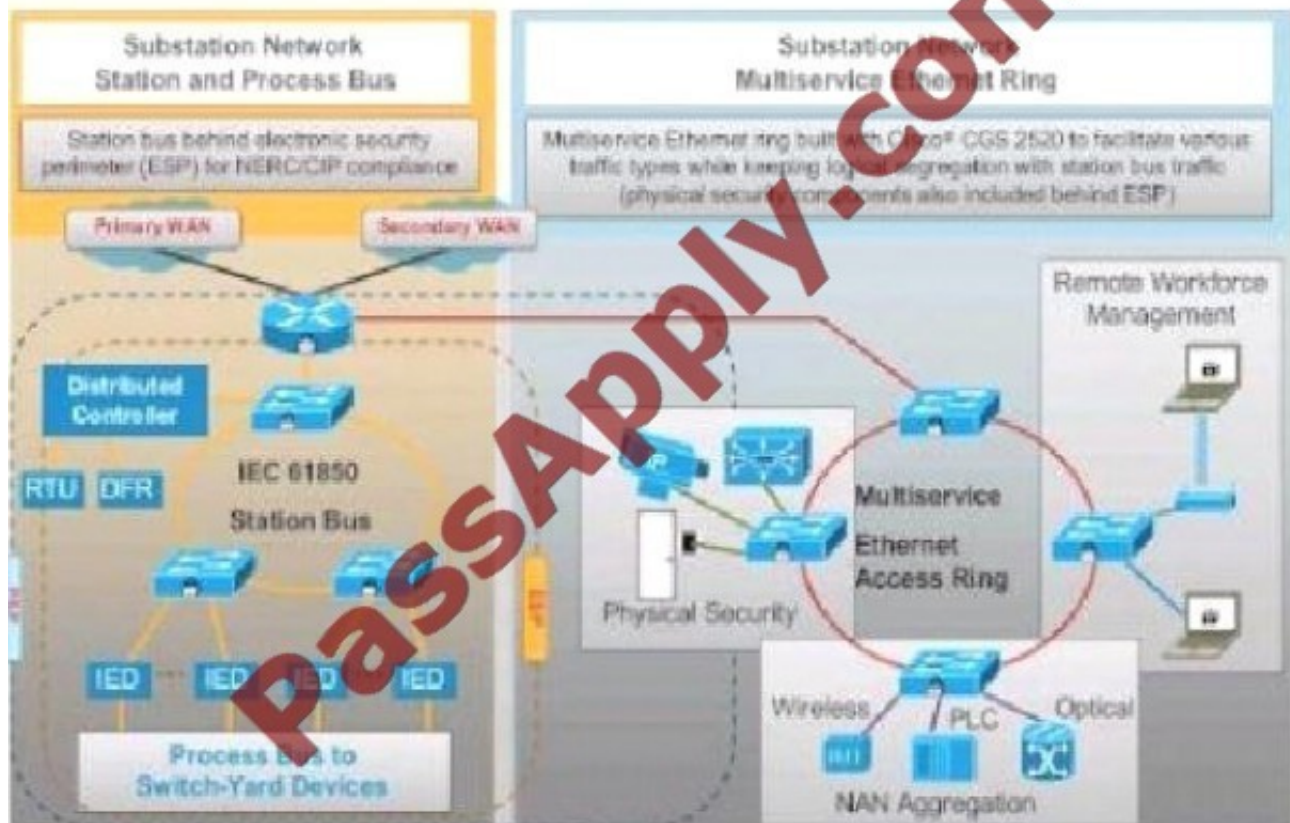
QUESTION 5

Which of these options includes the two major areas of the network within a substation in the Substation Automation architecture?

- A. the electrical network and the data network
- B. the primary WAN and the secondary WAN
- C. the secure access side and the open access side
- D. the station bus and the multi service Ethernet ring

Correct Answer: D

Substation Automation Solution Multiservice Substation Architecture





VCE & PDF

PassApply.com

<https://www.passapply.com/650-127.html>

2021 Latest passapply 650-127 PDF and VCE dumps Download

[650-127 PDF Dumps](#)

[650-127 Practice Test](#)

[650-127 Braindumps](#)



To Read the [Whole Q&As](#), please purchase the [Complete Version](#) from [Our website](#).

Try our product !

100% Guaranteed Success
100% Money Back Guarantee
365 Days Free Update
Instant Download After Purchase
24x7 Customer Support
Average 99.9% Success Rate
More than 800,000 Satisfied Customers Worldwide
Multi-Platform capabilities - [Windows](#), [Mac](#), [Android](#), [iPhone](#), [iPod](#), [iPad](#), [Kindle](#)

We provide exam PDF and VCE of Cisco, Microsoft, IBM, CompTIA, Oracle and other IT Certifications. You can view Vendor list of All Certification Exams offered:

<https://www.passapply.com/allproducts>

Need Help

Please provide as much detail as possible so we can best assist you.
To update a previously submitted ticket:



 <p>One Year Free Update Free update is available within One Year after your purchase. After One Year, you will get 50% discounts for updating. And we are proud to boast a 24/7 efficient Customer Support system via Email.</p>	 <p>Money Back Guarantee To ensure that you are spending on quality products, we provide 100% money back guarantee for 30 days from the date of purchase.</p>	 <p>Security & Privacy We respect customer privacy. We use McAfee's security service to provide you with utmost security for your personal information & peace of mind.</p>
---	---	--

Any charges made through this site will appear as Global Simulators Limited.
All trademarks are the property of their respective owners.
Copyright © passapply, All Rights Reserved.