



# 644-906<sup>Q&As</sup>

Implementing and Maintaining Cisco Technologies Using IOS XR

## Pass Cisco 644-906 Exam with 100% Guarantee

Free Download Real Questions & Answers **PDF** and **VCE** file from:

<https://www.passapply.com/644-906.html>

100% Passing Guarantee  
100% Money Back Assurance

Following Questions and Answers are all new published by Cisco  
Official Exam Center

-  **Instant Download** After Purchase
-  **100% Money Back** Guarantee
-  **365 Days** Free Update
-  **800,000+** Satisfied Customers





### QUESTION 1

Which command configures IPv4 uRPF strict mode on an interface?

- A. ipv4 verify unicast source reachable-via any
- B. ipv4 verify unicast source reachable-via tx
- C. ipv4 verify unicast source reachable-via rx
- D. ipv4 verify unicast destination reachable-via rx
- E. ipv4 verify multicast source reachable-via tx

Correct Answer: C

---

### QUESTION 2

Which Cisco IOS XR only command will show the status of IPv4 interfaces that have been configured under the OSPF process?

- A. show ospf interface
- B. show ipv4 ospf interface
- C. show ip ospf interface
- D. show ospf interface all
- E. show ospfv3 interface
- F. show ospf address-family

Correct Answer: A

---

### QUESTION 3

How would you configure IS-IS process TEST to support MPLS Traffic Engineering extensions on level 1 and 2 that are intending to run a tunnel across TenGigE 0/0/0/0?

- A. mpls ldp traffic-eng level-1-2mpls traffic-eng router-id 1.1.1.1 router isis TESTinterface Ten 0/0/0/0address-family ipv4 unicast
- B. router isis TESTnet 49.0001.0001.0001.0001.00address-family ipv4 unicastmetric-style widempls traffic-eng router-id 1.1.1.1mpls traffic-eng level-1-2 interface Ten 0/0/0/0address-family ipv4 unicast
- C. router isis TESTnet 49.0001.0001.0001.0001.00address-family ipv4 unimetric-style wideinterface Ten 0/0/0/0 address-family ipv4 unicastmpls traffic-eng router-id 1.1.1.1mpls traffic-eng level-1-2
- D. mpls ldrouter isis TESTinterface Ten 0/0/0/0address-family ipv4 unicastmpls traffic-eng level-1- 2mpls traffic-eng router-id 1.1.1.1



Correct Answer: B

#### QUESTION 4

In order to retrieve information from the temperature sensors on the system, what are the two commands that should be invoked? (Choose two.)

- A. RP/0/RP0/CPU0:CRS-MC#show version
- B. RP/0/RP0/CPU0:CRS-MC#show platform
- C. RP/0/RP0/CPU0:CRS-MC(admin)#show environment all
- D. RP/0/RP0/CPU0:CRS-MC(admin)#show environment temperature
- E. RP/0/RP0/CPU0:CRS-MC(admin)#show platform

Correct Answer: CD

#### QUESTION 5

**Instructions**

Enter the proper CLI commands and analysis the outputs on the Cisco routers to answer the multiple-choice questions.

From the network topology diagram, click on the router icon to gain access to the console of the router.

No console or enable passwords are required.

There are four multiple-choice questions with this task. Be sure to answer all four questions before selecting the Next button.

Not all the CLI commands or commands options are supported or required for this simulation.

For example, the show running-config command is **NOT** supported in this simulation.

All the devices in this simulation have been pre-configured and you are not required to enter in any configurations.

**Scenario**

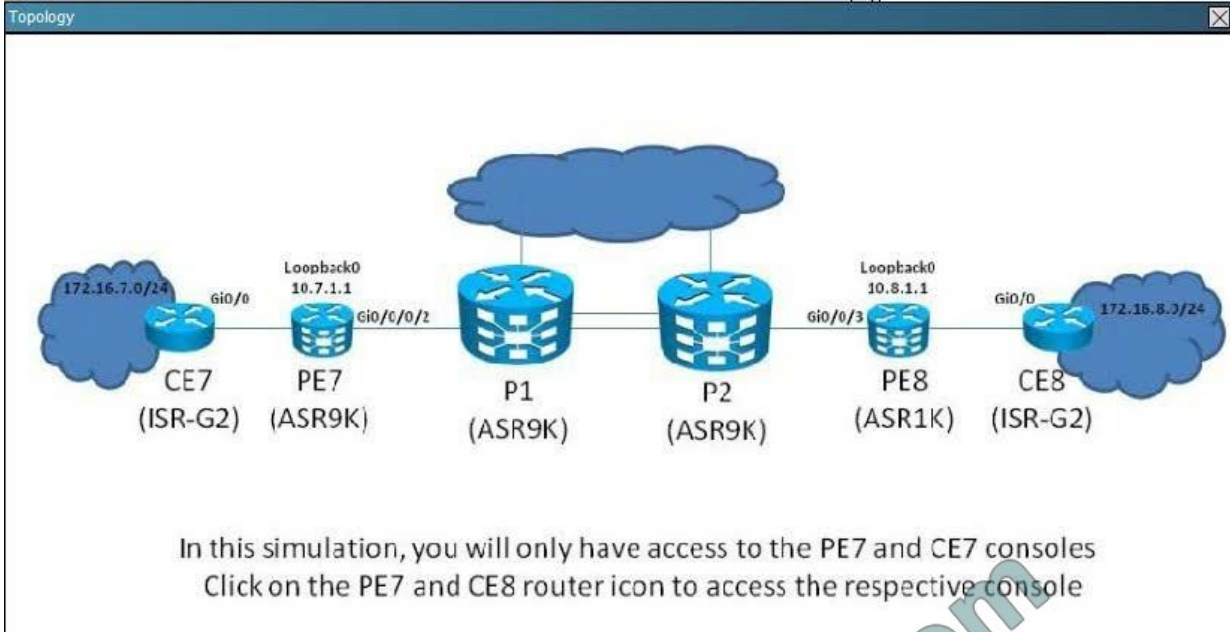
Referring to the network topology diagram shown in the exhibit, use the proper CLI commands on the CE7 and PE7 routers and interpret the supported CLI commands outputs to answer the four multiple choice questions.

The CE7 router is an ISR-G2 router and the PE7 router is an ASR9K router.

OSPF is the IGP running between all the PE and P routers.

LDP is running between all the PE and P routers.

CE7 and CE8 connectivity has been successfully established over the layer 3 MPLS VPN configurations on the PE7 and PE8 routers.



CE7

CE7#

RP/0/RSP0/CPU0:PE7

RP/0/RSP0/CPU0:PE7#

www.PassApply.com



Point and Shoot:

1 On PE7, What is the RD used on the VRF that is associated to the Gi0/0/0/0 interface?

2  1:1

3  1:10

4  1:11

1:100

1:10 and 1:11

*www.PassApply.com*

Hot Area:

1 On PE7, What is the RD used on the VRF that is associated to the Gi0/0/0/0 interface?

2  1:1

3  1:10

4  1:11

1:100

1:10 and 1:11

*www.PassApply.com*

Correct Answer:

1 On PE7, What is the RD used on the VRF that is associated to the Gi0/0/0/0 interface?

2  1:1

3  1:10

4  1:11

1:100

1:10 and 1:11

*www.PassApply.com*

[Latest 644-906 Dumps](#)

[644-906 PDF Dumps](#)

[644-906 Brindumps](#)



To Read the [Whole Q&As](#), please purchase the [Complete Version](#) from [Our website](#).

## Try our product !

100% Guaranteed Success  
100% Money Back Guarantee  
365 Days Free Update  
Instant Download After Purchase  
24x7 Customer Support  
Average 99.9% Success Rate  
More than 800,000 Satisfied Customers Worldwide  
Multi-Platform capabilities - [Windows](#), [Mac](#), [Android](#), [iPhone](#), [iPod](#), [iPad](#), [Kindle](#)

We provide exam PDF and VCE of Cisco, Microsoft, IBM, CompTIA, Oracle and other IT Certifications. You can view Vendor list of All Certification Exams offered:

<https://www.passapply.com/allproducts>

## Need Help

Please provide as much detail as possible so we can best assist you.  
To update a previously submitted ticket:



 <p><b>One Year Free Update</b> Free update is available within One Year after your purchase. After One Year, you will get 50% discounts for updating. And we are proud to boast a 24/7 efficient Customer Support system via Email.</p>	 <p><b>Money Back Guarantee</b> To ensure that you are spending on quality products, we provide 100% money back guarantee for 30 days from the date of purchase.</p>	 <p><b>Security &amp; Privacy</b> We respect customer privacy. We use McAfee's security service to provide you with utmost security for your personal information &amp; peace of mind.</p>
---------------------------------------------------------------------------------------------------------------------------------------------------------------------------------------------------------------------------------------------------------------------------------------------------------------------------------	-------------------------------------------------------------------------------------------------------------------------------------------------------------------------------------------------------------------------------------------------------------	------------------------------------------------------------------------------------------------------------------------------------------------------------------------------------------------------------------------------------------------------------------------------------

Any charges made through this site will appear as Global Simulators Limited.  
All trademarks are the property of their respective owners.  
Copyright © passapply, All Rights Reserved.