



642-902^{Q&As}

Implementing cisco ip routing

Pass Cisco 642-902 Exam with 100% Guarantee

Free Download Real Questions & Answers **PDF** and **VCE** file from:

<https://www.passapply.com/642-902.html>

100% Passing Guarantee
100% Money Back Assurance

Following Questions and Answers are all new published by Cisco
Official Exam Center

-  **Instant Download** After Purchase
-  **100% Money Back** Guarantee
-  **365 Days** Free Update
-  **800,000+** Satisfied Customers

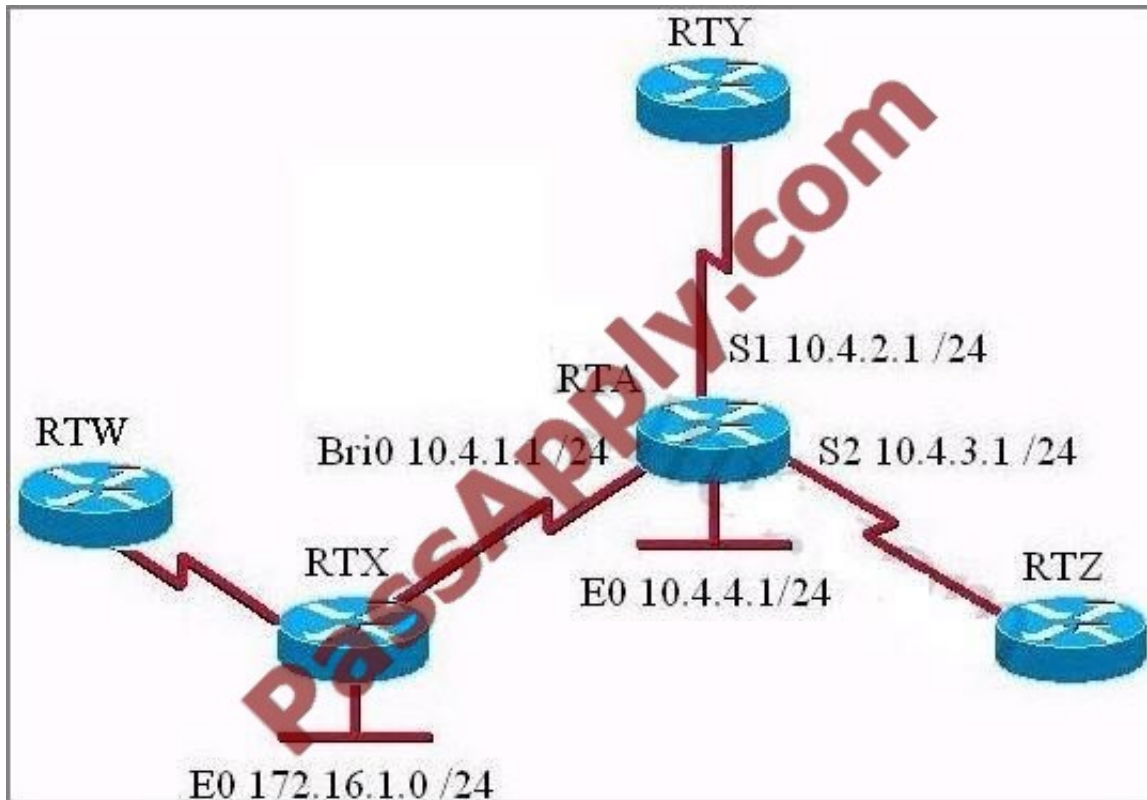




QUESTION 1

Router RTA is configured as follows:

```
RTA (config)#router rip
RTA(config-router)#network 10.0.0.0
RTA(config-router)#distribute-list 44 in interface BRI0
RTA(config-router)#exit
RTA(config)#access-list 44 deny 172.16.1.0 0.0.0.255
RTA(config)#access-list 44 permit any
```



What are the effects of this RIP configuration on router RTA? (Choose two)

- A. no routing updates will be sent from router RTA on interface BRI0 to router RTX
- B. router RTA will not advertise the 10.0.0.0 network to router RTX
- C. the route to network 172.16.1.0 will not be entered into the routing table on router RTA
- D. user traffic from the 172.16.1.0 network is denied by access-list 44
- E. the routing table on router RTA will be updated with the route to router RTW

Correct Answer: CE

Distribute list are used to filter routing updates and they are based on access lists. In this case, an access list of 44 was created to deny the route from network 172.16.1.0/24 so this route will not be entered into the routing table of RTA. But

the route from RTW can be entered because it is not filtered by the access list A and B are not correct because the distribute list is applied to the inbound direction of interface BRI0 so outgoing routing updated will not be filtered.

Distribute list just filters routing updates so user traffic from network 172.16.1.0 will not be denied.



QUESTION 2

The following command was issued on R2

```
R2#sho ip rou
<output omitted>
C    10.1.1.0 is directly connected, FastEthernet0/0
D    172.16.0.0/16 [90/156160] via 10.1.1.1, 00:07:48, FastEthernet0/0
D EX 192.168.1.0/24 [170/1308160] via 10.1.1.1, 00:00:11, FastEthernet0/0
```

Given the above output, which statement is true?

- A. 192.168.1.0 is a static route.
- B. 192.168.1.0 is a summarized route.
- C. 192.168.1.0 is a redistributed route into EIGRP.
- D. 192.168.1.0 is equal path load balancing with 172.16.1.0.

Correct Answer: C

Reference:

http://www.cisco.com/en/US/tech/tk365/technologies_tech_note09186a008009487e.shtml (administrative distance, second para)

QUESTION 3

Refer to the exhibit. Based on the output from the show command on RT1 which statement is true?

```
RT1# show ipv6 ospf interface
FastEthernet0/0 is up, line protocol is up
Link Local Address FE80::218:B9FF:FE12:2CD1, Interface ID 4
Area 0, Process ID 1, Instance ID 0, Router ID 10.1.1.1
Network Type BROADCAST, Cost: 1
Transmit Delay is 1 sec, State Brother, Priority 1
Designated Router (ID) 10.1.3.1, local address FE80::218:B9FF:FECD:BEF0
Backup Designated router (ID) 10.1.2.1, local address FE80::218:B9FF:FE92:28D8
Timer intervals configured, Hello 10, Dead 40, Wait 40, Retransmit 5
  Hello due in 00:00:04
Index 1/3/3, flood queue length 0
Next 0x0 (0) /0x0 (0) /0x0 (0)
Last flood scan length is 2, maximum is 2
Last flood scan time is 0 msec, maximum is 0 msec
Neighbor Count is 2, Adjacent neighbor count is 2
  Adjacent with neighbor 10.1.3.1 (Designated Router)
  Adjacent with neighbor 10.1.2.1 (Backup Designated Router)
Suppress hello for 0 neighbor(s)
```



- A. OSPFv3 uses global IPv6 addresses to establish neighbor adjacencies.
- B. RT1 has a subnet mask of 64 bits.
- C. RT1 has FastEthernet0/0 set as a DR for network type broadcast.
- D. OSPFv3 uses Link-local addresses to establish neighbor adjacencies.
- E. RT1 does not have a global IPv6 address set on FastEthernet0/0.
- F. OSPFv3 uses IPv4 addresses to establish neighbor adjacencies.

Correct Answer: D

OSPFv3 is an updated version of OSPF designed to accommodate IPv6 natively. OSPFv3 uses the multicast address FF02::5 and FF02::6, but like EIGRP it uses its link-local address as the source address in advertisements.

QUESTION 4

Which three statements about OSPF areas are true? (Choose three.)

- A. Areas introduce a boundary on the link-state updates.
- B. Areas are logical definitions specific to any given router.
- C. All routers within an area have the exact link-state database.
- D. The calculation of the Dijkstra algorithm on a router is limited to changes within an area.
- E. The area designated router will always have a priority of 0.

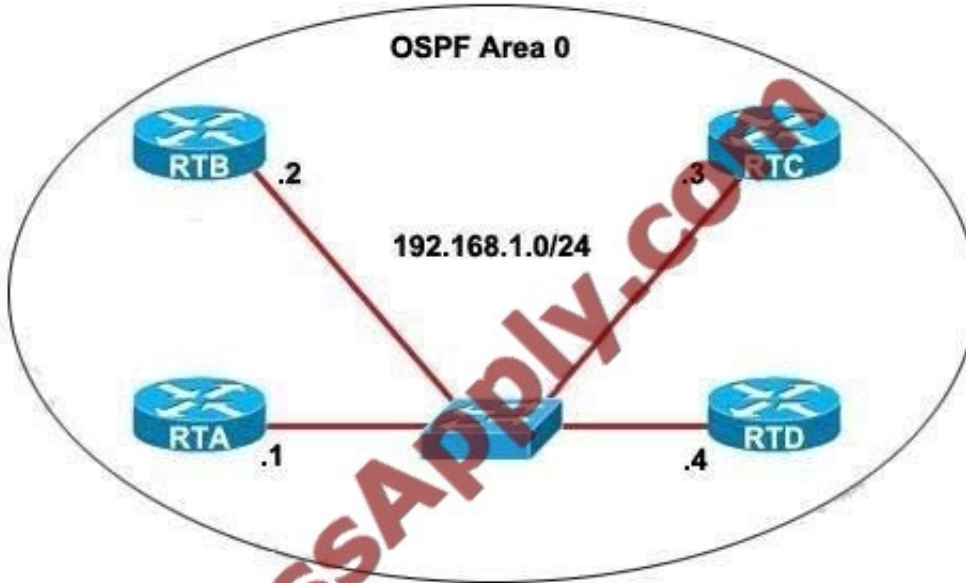
Correct Answer: ACD

Reference:

http://www.cisco.com/en/US/tech/tk365/technologies_white_paper09186a0080094e9e.shtml (areas and border routers)

QUESTION 5

Refer to the exhibit. All routers have simultaneously been reloaded, and the DR election has concluded as expected. Which state is RTC in?



```
RTD# show ip ospf neighbor
```

Neighbor ID	Pri	State	Dead Time	Address	Interface
192.168.1.2	1	output omitted	00:00:37	192.168.1.2	Ethernet0
192.168.1.1	1	output omitted	00:00:38	192.168.1.1	Ethernet0
192.168.1.3	1	output omitted	00:00:32	192.168.1.3	Ethernet0

- A. 2WAY/DROTHER
- B. 2WAY/BDR
- C. 2WAY/DR
- D. FULL/DROTHER
- E. FULL/BDR
- F. FULL/DR

Correct Answer: E

http://www.cisco.com/en/US/tech/tk365/technologies_tech_note09186a0080094059.shtml All the routers are allowed to take part in the DR/BDR election because all the "Pri"s (Priority) are 1 and they are equal so with default parameters, the router with highest IP address will become DR (RTD in this case) and the router with second highest IP address (RTC) will become BDR.

[642-902 PDF Dumps](#)

[642-902 Exam Questions](#)

[642-902 Braindumps](#)



To Read the [Whole Q&As](#), please purchase the [Complete Version](#) from [Our website](#).

Try our product !

- 100% Guaranteed Success
- 100% Money Back Guarantee
- 365 Days Free Update
- Instant Download After Purchase
- 24x7 Customer Support
- Average 99.9% Success Rate
- More than 800,000 Satisfied Customers Worldwide
- Multi-Platform capabilities - [Windows](#), [Mac](#), [Android](#), [iPhone](#), [iPod](#), [iPad](#), [Kindle](#)

We provide exam PDF and VCE of Cisco, Microsoft, IBM, CompTIA, Oracle and other IT Certifications. You can view Vendor list of All Certification Exams offered:

<https://www.passapply.com/allproducts>

Need Help

Please provide as much detail as possible so we can best assist you.
To update a previously submitted ticket:



 <p>One Year Free Update Free update is available within One Year after your purchase. After One Year, you will get 50% discounts for updating. And we are proud to boast a 24/7 efficient Customer Support system via Email.</p>	 <p>Money Back Guarantee To ensure that you are spending on quality products, we provide 100% money back guarantee for 30 days from the date of purchase.</p>	 <p>Security & Privacy We respect customer privacy. We use McAfee's security service to provide you with utmost security for your personal information & peace of mind.</p>
---	---	--

Any charges made through this site will appear as Global Simulators Limited.
All trademarks are the property of their respective owners.
Copyright © passapply, All Rights Reserved.