



# 642-648<sup>Q&As</sup>

Deploying Cisco ASA VPN Solutions (VPN v2.0)

## Pass Cisco 642-648 Exam with 100% Guarantee

Free Download Real Questions & Answers **PDF** and **VCE** file from:

<https://www.passapply.com/642-648.html>

100% Passing Guarantee  
100% Money Back Assurance

Following Questions and Answers are all new published by Cisco  
Official Exam Center

-  **Instant Download** After Purchase
-  **100% Money Back** Guarantee
-  **365 Days** Free Update
-  **800,000+** Satisfied Customers





### QUESTION 1

In Cisco ASA Software Release 8.4.1, which three plug-ins are Cisco ASA-supported plug-ins? (Choose three.)

- A. SSH
- B. TN3270
- C. SCP
- D. RDP
- E. ICA
- F. ARAP

Correct Answer: ADE

---

### QUESTION 2

A remote user who establishes a clientless SSL VPN session is presented with a web page. The administrator has the option to customize the "look and feel" of the page. What are three components of the VPN Customization Editor? (Choose three.)

- A. Application page
- B. Logon page
- C. Networking page
- D. Logout page
- E. Home page
- F. Portal page

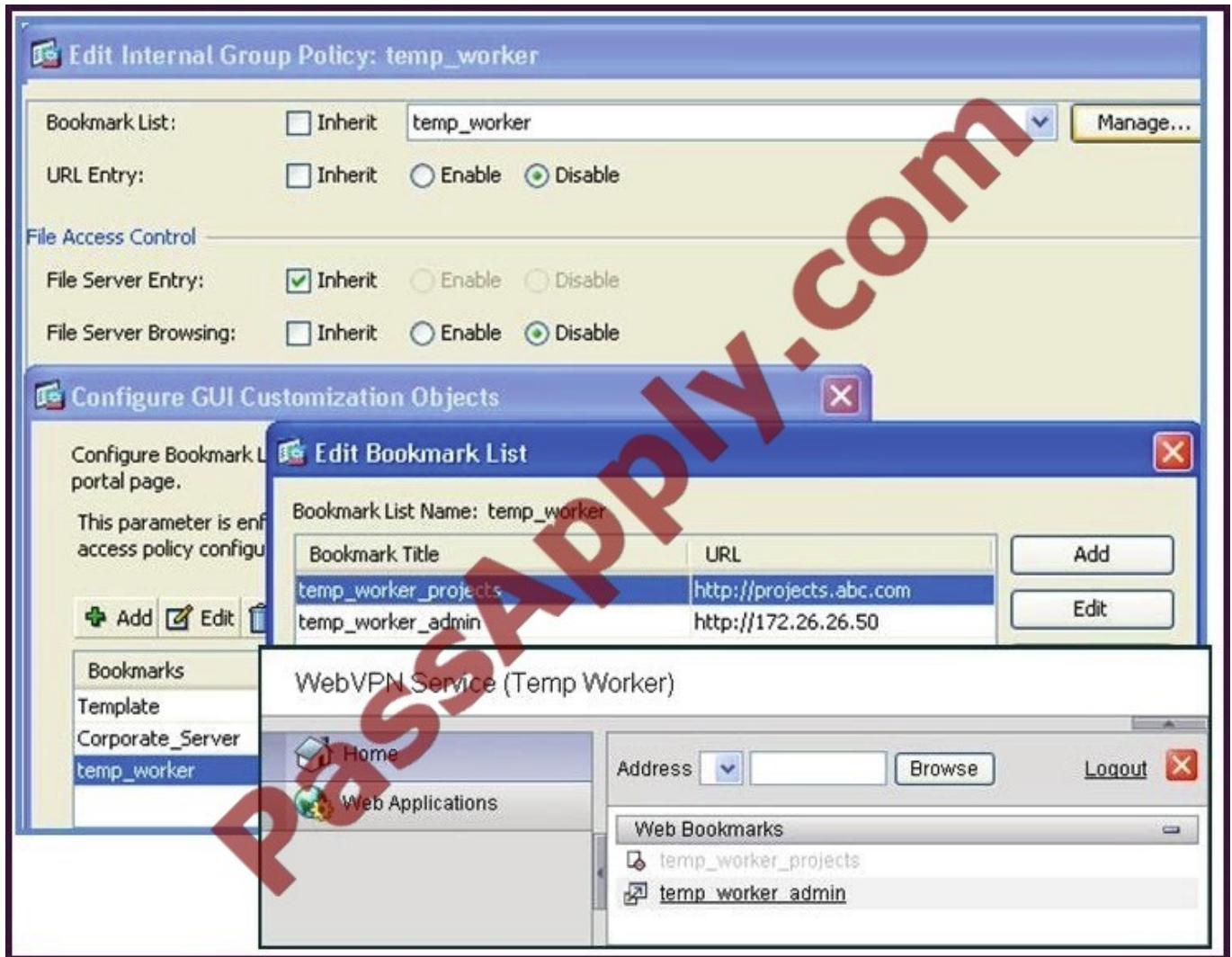
Correct Answer: BDF

GUI Enhancements In Cisco IOS Release 12.4(15)T, ergonomic improvements were made to the GUI user interface of the Cisco IOS SSL VPN gateway. The improved customization of the user interface provides for greater flexibility and the ability to tailor portal pages for individualized looks. Enhancements were made to the following web screens: ?Login screen ?Portal page

---

### QUESTION 3

Refer to the exhibit.



A new network engineer configured the ABC adaptive security appliance with two bookmarks for a new temporary worker. The temporary worker can connect to the administrator server via the temp\_worker\_admin bookmark but cannot

connect to the project server via the temp\_worker\_projects bookmark (which is grayed out). It was determined that the URL and IP addressing information in the GUI screens is correct.

What is wrong with the configuration?

- A. URL Entry should be enabled.
- B. The File Server Entry Inherit parameter should be overwritten and set for enabled.
- C. The DNS server information is incorrect.
- D. File Server Browsing should be enabled.

Correct Answer: C

#### QUESTION 4



Refer to the exhibit.



A NOC engineer is in the process of entering information into the Create New VPN Connection Entry fields. Which statement correctly describes how to do this?

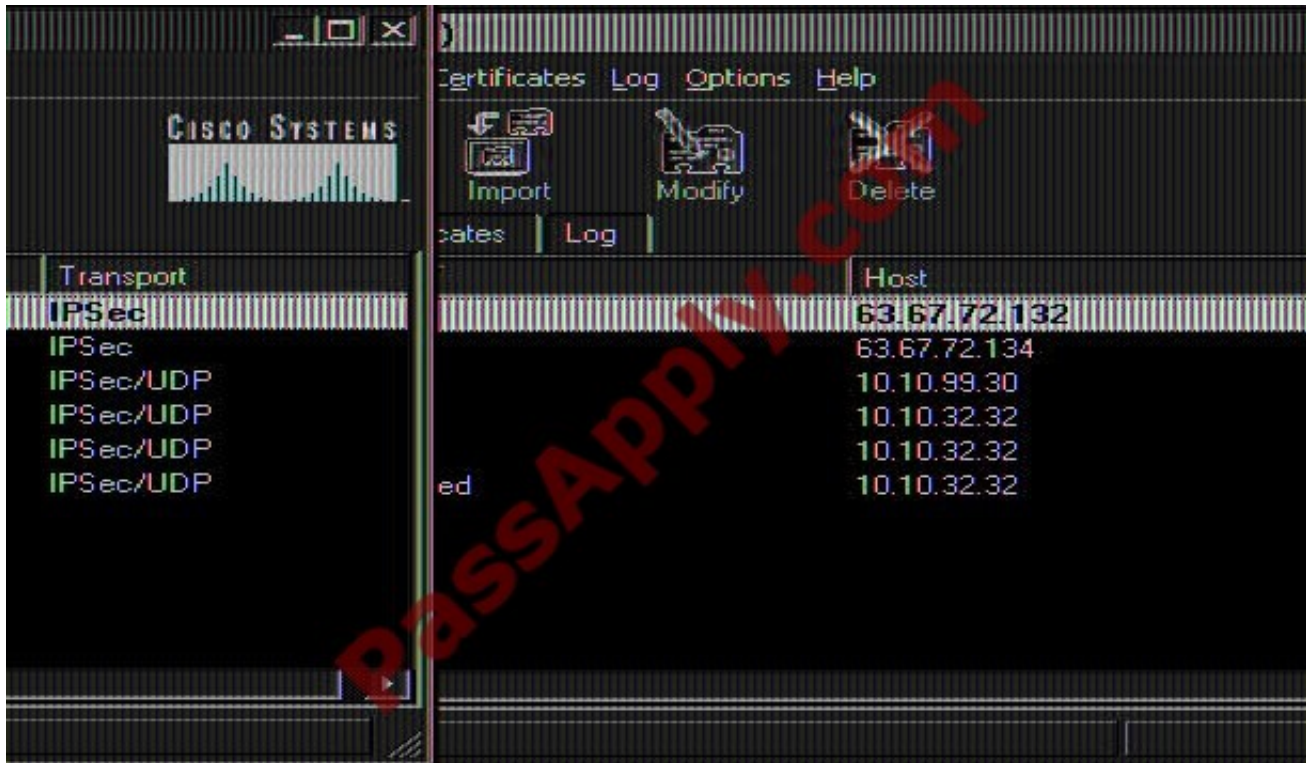
- A. In the Connection Entry field, enter the name of the connection profile as it is specified on the Cisco ASA appliance.
- B. In the Host field, enter the IP address of the remote client device.
- C. In the Authentication tab, click the Group Authentication or Mutual Group Authentication radio button to enable symmetrical pre-shared key authentication.
- D. In the Name field, enter the name of the connection profile as it is specified on the Cisco ASA appliance.

Correct Answer: D

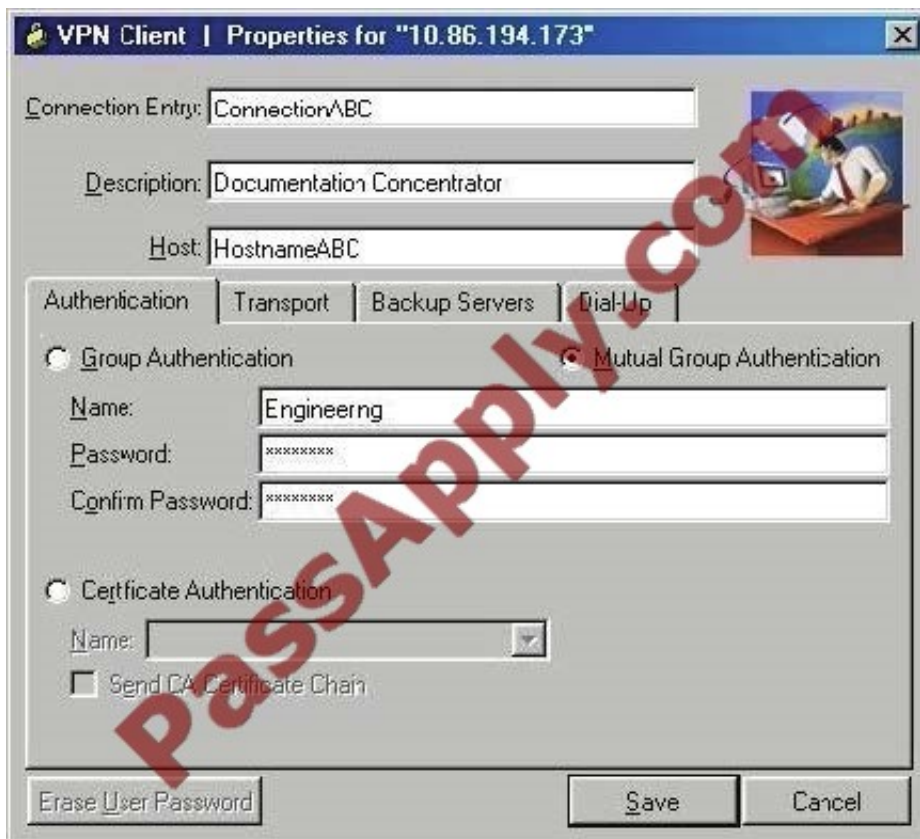
[http://www.cisco.com/en/US/docs/security/vpn\\_client/cisco\\_vpn\\_client/vpn\\_client46/win/user/guide/vc4.html#wp1074766](http://www.cisco.com/en/US/docs/security/vpn_client/cisco_vpn_client/vpn_client46/win/user/guide/vc4.html#wp1074766)

Step 1 Start the VPN Client by choosing Start > Programs > Cisco Systems VPN Client > VPN Client.

Step 2 The VPN Client application starts and displays the advanced mode main window (Figure 4-1). If you are not already there, open the Options menu in simple mode and choose Advanced Mode or press Ctrl-M.



Step 3 Select New from the toolbar or the Connection Entries menu. The VPN Client displays a form



Step 4 Enter a unique name for this new connection. You can use any name to identify this connection; for example, Engineering. This name can contain spaces, and it is not case-sensitive. Step 5 Enter a description of this connection. This



field is optional, but it helps further identify this connection.

For example, Connection to Engineering remote server. Step 6 Enter the hostname or IP address of the remote VPN device you want to access.

#### Group Authentication

Your network administrator usually configures group authentication for you. If this is not the case, use the following procedure:

Step 1 Click the Group Authentication radio button.

Step 2 In the Name field, enter the name of the IPsec group to which you belong. This entry is case-sensitive.

Step 3 In the Password field, enter the password (which is also case-sensitive) for your IPsec group. The field displays only asterisks.

Step 4 Verify your password by entering it again in the Confirm Password field.

---

#### QUESTION 5

A Cisco AnyConnect user profile can be pushed to the PC of a remote user from a Cisco ASA. Which three user profile parameters are configurable? (Choose three.)

- A. Backup Server list
- B. DTLS Override
- C. Auto Reconnect
- D. Simultaneous Tunnels
- E. Connection Profile Lock
- F. Auto Update

Correct Answer: ACF

[http://www.cisco.com/en/US/docs/security/vpn\\_client/anyconnect/anyconnect20/administrative/guide/adminapa.pdf](http://www.cisco.com/en/US/docs/security/vpn_client/anyconnect/anyconnect20/administrative/guide/adminapa.pdf)

[Latest 642-648 Dumps](#)

[642-648 PDF Dumps](#)

[642-648 Brindumps](#)



To Read the [Whole Q&As](#), please purchase the [Complete Version](#) from [Our website](#).

## Try our product !

100% Guaranteed Success  
100% Money Back Guarantee  
365 Days Free Update  
Instant Download After Purchase  
24x7 Customer Support  
Average 99.9% Success Rate  
More than 800,000 Satisfied Customers Worldwide  
Multi-Platform capabilities - [Windows](#), [Mac](#), [Android](#), [iPhone](#), [iPod](#), [iPad](#), [Kindle](#)

We provide exam PDF and VCE of Cisco, Microsoft, IBM, CompTIA, Oracle and other IT Certifications.  
You can view Vendor list of All Certification Exams offered:

<https://www.passapply.com/allproducts>

## Need Help

Please provide as much detail as possible so we can best assist you.  
To update a previously submitted ticket:



 <p><b>One Year Free Update</b> Free update is available within One Year after your purchase. After One Year, you will get 50% discounts for updating. And we are proud to boast a 24/7 efficient Customer Support system via Email.</p>	 <p><b>Money Back Guarantee</b> To ensure that you are spending on quality products, we provide 100% money back guarantee for 30 days from the date of purchase.</p>	 <p><b>Security &amp; Privacy</b> We respect customer privacy. We use McAfee's security service to provide you with utmost security for your personal information &amp; peace of mind.</p>
---	---	--

Any charges made through this site will appear as Global Simulators Limited.  
All trademarks are the property of their respective owners.  
Copyright © passapply, All Rights Reserved.