



642-648^{Q&As}

Deploying Cisco ASA VPN Solutions (VPN v2.0)

Pass Cisco 642-648 Exam with 100% Guarantee

Free Download Real Questions & Answers **PDF** and **VCE** file from:

<https://www.passapply.com/642-648.html>

100% Passing Guarantee
100% Money Back Assurance

Following Questions and Answers are all new published by Cisco
Official Exam Center

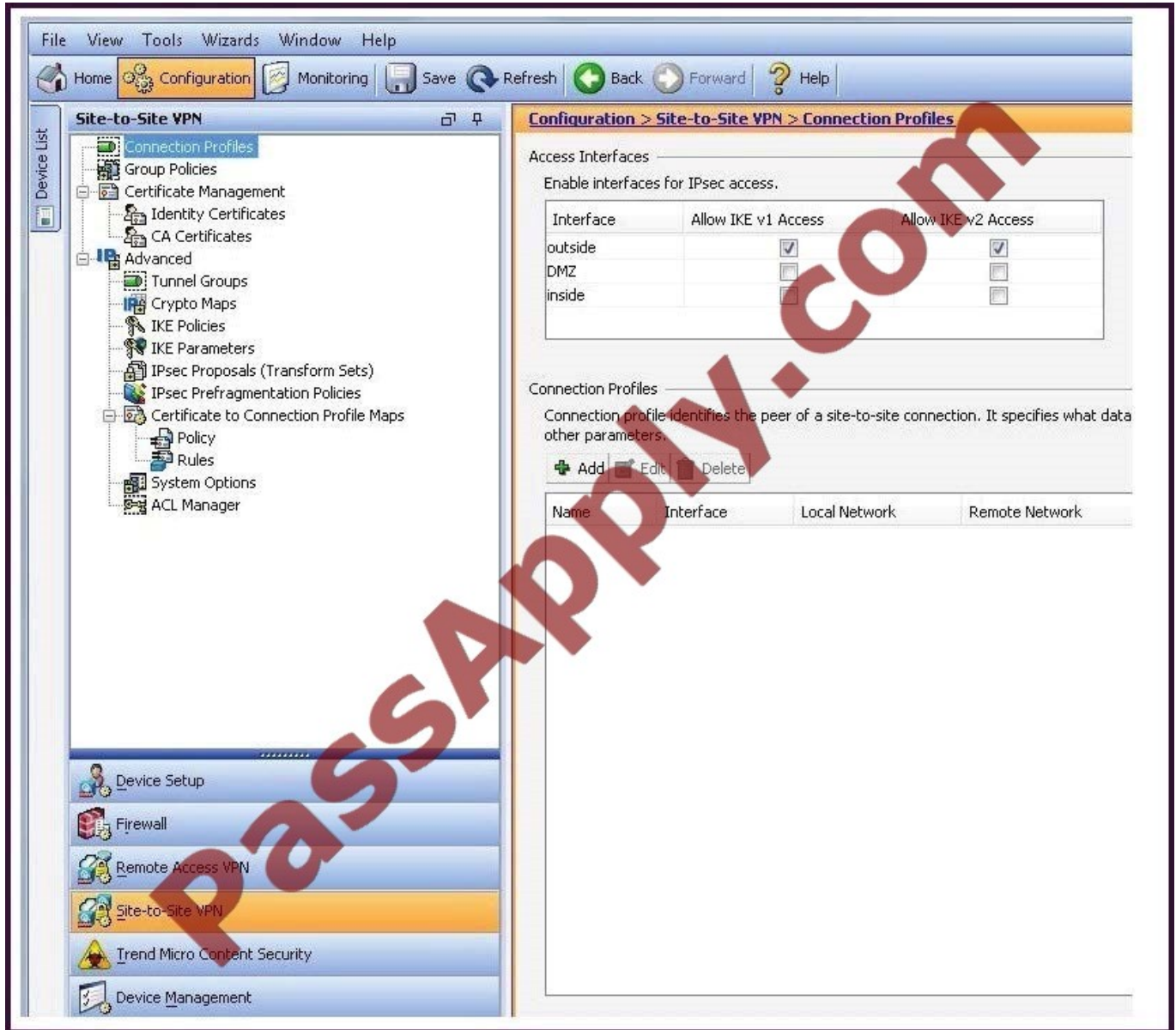
-  **Instant Download** After Purchase
-  **100% Money Back** Guarantee
-  **365 Days** Free Update
-  **800,000+** Satisfied Customers





QUESTION 1

Refer to the exhibit.



You are the network security administrator. You have received calls from site-to-site IPsec VPN users saying that they cannot connect into the network. In troubleshooting this problem, you discover that some sites can connect, but other sites cannot. It is not always the same sites experiencing problems. You suspect that the permitted number of simultaneous logins has been reached and needs to be increased.

In which configuration window or tab should you accomplish this task?

- A. in the IKE Policies window
- B. in the IKE Parameters window
- C. in the System Options window



D. in the Device Management tab

Correct Answer: C

Limit the maximum number of active IPsec VPN sessions

--Enables or disables limiting the maximum number of active IPsec VPN sessions. The range depends on the hardware platform and the software license.

Maximum Active IPsec VPN Sessions--Specifies the maximum number of active IPsec VPN sessions allowed. This field is active only when you select the preceding check box to limit the maximum number of active IPsec VPN sessions.

QUESTION 2

Some users are having problems connecting via clientless SSL VPN, while other users are experiencing no problems. What is one possible cause of this issue?

- A. The Cisco ASA identity certificates have not been generated.
- B. SSL version checking is enabled, and clients are connecting with denied versions.
- C. SSL VPN termination is not enabled.
- D. The Cisco ASA identity certificate is not bound to the SSL interface.

Correct Answer: B

http://www.cisco.com/web/about/security/intelligence/05_08_SSL-VPN-Security.html

Host identity verification There is a difference between trusting a user (after passing strong user authentication) and trusting that user's computer. While the former has traditionally been emphasized, only recently has the latter been given sufficient attention (see Trusted Platform Module - TPM). As discussed earlier, a Trojan-laden computer defeats strong user authentication. But a "company computer", which is typically supported and managed according to corporate security policies, typically deserves more trust than a "non-company computer". A secure SSL VPN infrastructure should allow you to verify a remote host's identity by checking on predefined end device parameters. Examples include registry entries, special files in a specified location, or digital certificates (as a form of device authentication). The host identity information can be used to make your access permission decisions.

QUESTION 3

A Cisco AnyConnect user profile can be pushed to the PC of a remote user from a Cisco ASA. Which three user profile parameters are configurable? (Choose three.)

- A. Backup Server list
- B. DTLS Override
- C. Auto Reconnect
- D. Simultaneous Tunnels
- E. Connection Profile Lock



F. Auto Update

Correct Answer: ACF

http://www.cisco.com/en/US/docs/security/vpn_client/anyconnect/anyconnect20/administrative/guide/ad_minapa.pdf

QUESTION 4

If CRL checking is enabled on the Cisco ASA, where can the Cisco ASA find the CRL?

- A. The Cisco ASA polls the CA for an updated list at a predefined rate.
- B. The CA sends a CRL to the Cisco ASA directly at least once a week.
- C. The CRL distribution point is listed on the identity certificate.
- D. The CRL is sent out-of-band to the administrator at a negotiated rate, typically biweekly.
- E. The CRL distribution point can be configured in the Connection Profile or Group Policy.

Correct Answer: C

QUESTION 5

Refer to the exhibit.



A NOC engineer is in the process of entering information into the Create New VPN Connection Entry fields. Which statement correctly describes how to do this?

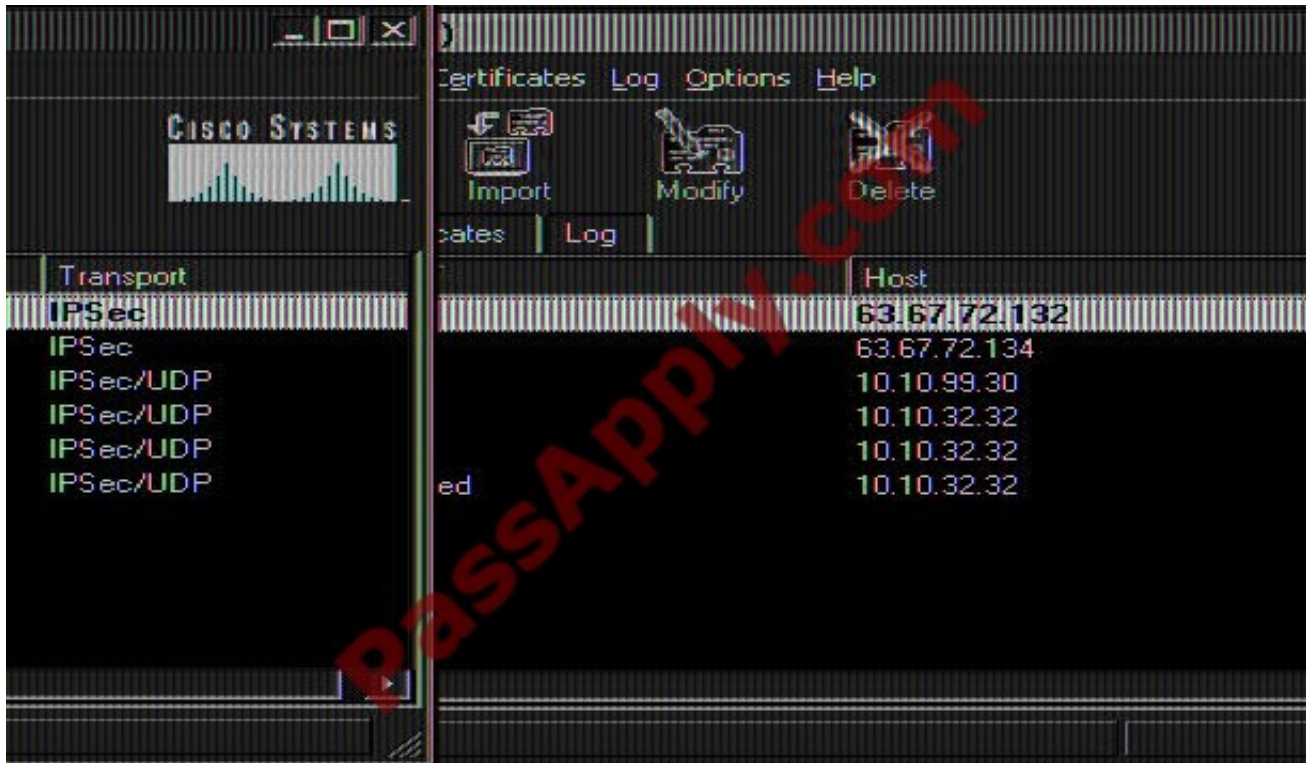
- A. In the Connection Entry field, enter the name of the connection profile as it is specified on the Cisco ASA appliance.
- B. In the Host field, enter the IP address of the remote client device.
- C. In the Authentication tab, click the Group Authentication or Mutual Group Authentication radio button to enable symmetrical pre-shared key authentication.
- D. In the Name field, enter the name of the connection profile as it is specified on the Cisco ASA appliance.

Correct Answer: D

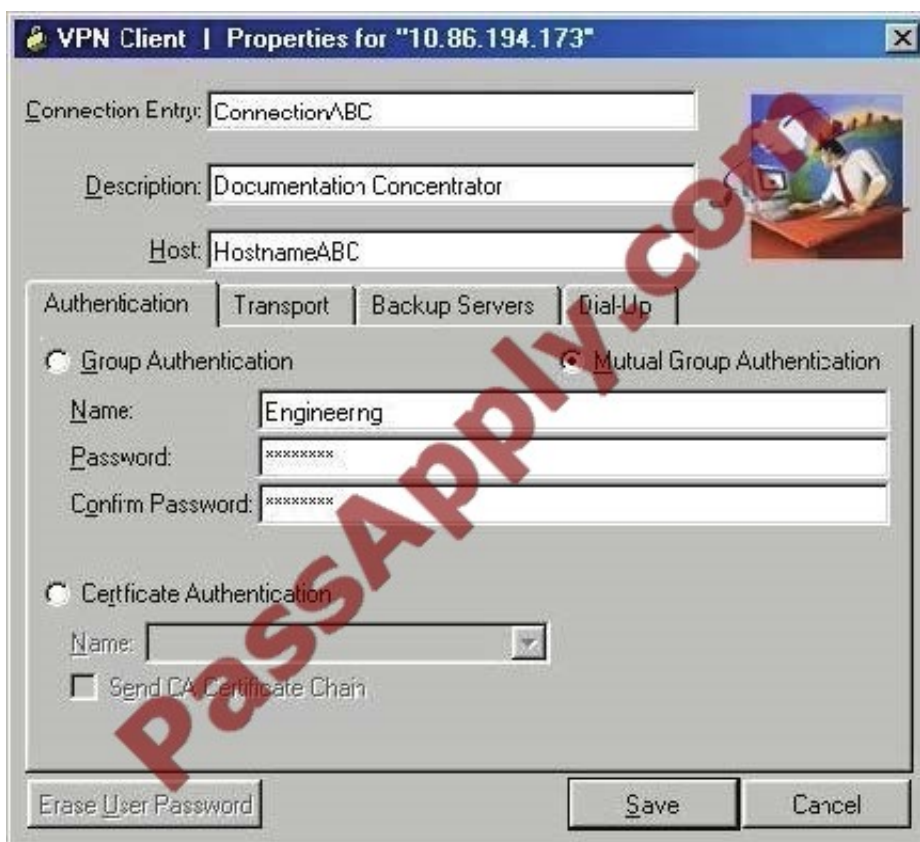
http://www.cisco.com/en/US/docs/security/vpn_client/cisco_vpn_client/vpn_client46/win/user/guide/vc4.html#wp1074766

Step 1 Start the VPN Client by choosing Start > Programs > Cisco Systems VPN Client > VPN Client.

Step 2 The VPN Client application starts and displays the advanced mode main window (Figure 4-1). If you are not already there, open the Options menu in simple mode and choose Advanced Mode or press Ctrl-M.



Step 3 Select New from the toolbar or the Connection Entries menu. The VPN Client displays a form



Step 4 Enter a unique name for this new connection. You can use any name to identify this connection; for example, Engineering. This name can contain spaces, and it is not case-sensitive. Step 5 Enter a description of this connection. This



field is optional, but it helps further identify this connection.

For example, Connection to Engineering remote server. Step 6 Enter the hostname or IP address of the remote VPN device you want to access.

Group Authentication

Your network administrator usually configures group authentication for you. If this is not the case, use the following procedure:

Step 1 Click the Group Authentication radio button.

Step 2 In the Name field, enter the name of the IPsec group to which you belong. This entry is case-sensitive.

Step 3 In the Password field, enter the password (which is also case-sensitive) for your IPsec group. The field displays only asterisks.

Step 4 Verify your password by entering it again in the Confirm Password field.

[642-648 PDF Dumps](#)

[642-648 Practice Test](#)

[642-648 Braindumps](#)



To Read the [Whole Q&As](#), please purchase the [Complete Version](#) from [Our website](#).

Try our product !

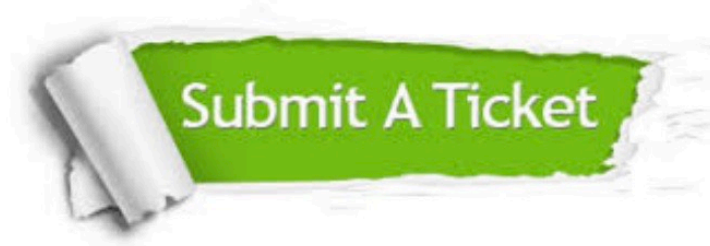
- 100% Guaranteed Success
- 100% Money Back Guarantee
- 365 Days Free Update
- Instant Download After Purchase
- 24x7 Customer Support
- Average 99.9% Success Rate
- More than 800,000 Satisfied Customers Worldwide
- Multi-Platform capabilities - [Windows](#), [Mac](#), [Android](#), [iPhone](#), [iPod](#), [iPad](#), [Kindle](#)

We provide exam PDF and VCE of Cisco, Microsoft, IBM, CompTIA, Oracle and other IT Certifications. You can view Vendor list of All Certification Exams offered:

<https://www.passapply.com/allproducts>

Need Help

Please provide as much detail as possible so we can best assist you.
To update a previously submitted ticket:



 <p>One Year Free Update Free update is available within One Year after your purchase. After One Year, you will get 50% discounts for updating. And we are proud to boast a 24/7 efficient Customer Support system via Email.</p>	 <p>Money Back Guarantee To ensure that you are spending on quality products, we provide 100% money back guarantee for 30 days from the date of purchase.</p>	 <p>Security & Privacy We respect customer privacy. We use McAfee's security service to provide you with utmost security for your personal information & peace of mind.</p>
---	---	--

Any charges made through this site will appear as Global Simulators Limited.
All trademarks are the property of their respective owners.
Copyright © passapply, All Rights Reserved.