



642-648^{Q&As}

Deploying Cisco ASA VPN Solutions (VPN v2.0)

Pass Cisco 642-648 Exam with 100% Guarantee

Free Download Real Questions & Answers **PDF** and **VCE** file from:

<https://www.passapply.com/642-648.html>

100% Passing Guarantee
100% Money Back Assurance

Following Questions and Answers are all new published by Cisco
Official Exam Center

-  **Instant Download** After Purchase
-  **100% Money Back** Guarantee
-  **365 Days** Free Update
-  **800,000+** Satisfied Customers





QUESTION 1

Clientless Applications

Application Type	Panel	Filename
Standard	Application Access	app-access-hlp.inc
Standard	Browse Networks	file-access-hlp.inc
Standard	AnyConnect Client	net-access-hlp.inc
Standard	Web Access	web-access-hlp.inc
Plug-in	MetaFrame Access	ica-hlp.inc
Plug-in	Terminal Servers	rdp-hlp.inc
Plug-in	Telnet/SSH Servers	ssh,telnet-hlp.inc
Plug-in	VNC Connections	vnc-hlp.inc



	<ul style="list-style-type: none">• Network Access Manager• Telemetry• Highly secure remote-access connectivity• Single license per device model• Full Tunneling access to enterprise applications
op capabilities connect Secure g Full Tunneling	<ul style="list-style-type: none">• Includes clientless SSL VPN, Cisco Secure Desktop (including Host Scan), and support for Cisco AnyConnect Mobility. Provides Essentials capabilities, including access to enterprise applications• License is based on number of simultaneous users, a single device or shared license• Cisco AnyConnect Secure Mobility also requires a Security Appliance license
rs, and is available as Cisco IronPort Web	ses
to Essentials or	<ul style="list-style-type: none">• Enables Mobile OS platform compatibility• One license required per ASA platform, in addition Premium license
ties (such as auto- ses (not available with	<ul style="list-style-type: none">• Enables advanced endpoint assessment capabilities (remediation)• Required per device, in addition to Premium license AnyConnect Essentials)
ndent of where the g license and optional AnyConnect Premium	<ul style="list-style-type: none">• Enforce security policy in every transaction, independent of where user is located• For use with Cisco IronPort Web Security Appliance, AnyConnect Premium license, or standalone with license

An engineer, while working at a home office, wants to launch the Cisco AnyConnect Client to the corporate offices while simultaneously printing network designs on the home network.

Without allowing access to the Internet, what are the two best ways for the administrator to configure this application? (Choose two.)

- A. Select the Tunnel All Networks policy.
- B. Select the Tunnel Network List Below policy.
- C. Select the Exclude Network List Below policy.
- D. Configure an exempted network list.
- E. Configure a standard access list and apply it to the network list.



F. Configure an extended access list and apply it to the network list.

Correct Answer: CE

http://www.cisco.com/en/US/products/ps6120/products_configuration_example09186a0080702992.shtml

QUESTION 2

After adding a remote-access IPsec tunnel via the VPN wizard, an administrator needs to tune the IKE policy parameters. Where is the correct place to tune IKE policy parameters?

- A. Cisco IPsec VPN SW Client > Client Profile
- B. IPsec User Profile
- C. Group Policy
- D. IKE Policy
- E. Crypto Map

Correct Answer: D

QUESTION 3

Refer to the exhibit.



For the ABC Corporation, members of the NOC need the ability to select tunnel groups from a drop-down menu on the Cisco WebVPN login page.

As the Cisco ASA administrator, how would you accomplish this task?

- A. Define a special identity certificate with multiple groups, which are defined in the certificate OU field, that will grant the certificate holder access to the named groups on the login page.



- B. Under Group Policies, define a default group that encompasses the required individual groups that will appear on the login page.
- C. Under Connection Profiles, define a NOC profile that encompasses the required individual profiles that will appear on the login page.
- D. Under Connection Profiles, enable "Allow user to select connection profile."

Correct Answer: D

Cisco ASDM User Guide Version 6.1 Add or Edit SSL VPN Connections > Advanced > SSL VPN This dialog box lets you configure attributes that affect what the remote user sees upon login. Fields ?Login Page Customization--Configures the look and feel of the user login page by specifying which preconfigured customization attributes to apply. The default is DfltCustomization. ?Manage--Opens the Configure GUI Customization Objects window. ?Connection Aliases--Lists in a table the existing connection aliases and their status and lets you add or delete items in that table. A connection alias appears on the user login page if the connection is configured to allow users to select a particular connection (tunnel group) at login. Add--Opens the Add Connection Alias window, on which you can add and enable a connection alias. Delete-- Removes the selected row from the connection alias table. There is no confirmation or undo. ?Group URLs--Lists in a table the existing group URLs and their status and lets you add or delete items in that table. A group URL appears on the user login page if the connection is configured to allow users to select a particular group at login. Add--Opens the Add Group URL window, on which you can add and enable a group URL. Delete--Removes the selected row from the connection alias table. There is no confirmation or undo.

QUESTION 4

Refer to the exhibit.

```
http://server/homepage/CSCO_WEBVPN_USERNAME.html  
ssh://sshserver/?cscs_sso=1
```

Which two statements are correct regarding these two Cisco ASA clientless SSL VPN bookmarks? (Choose two.)

- A. CSCO_WEBVPN_USERNAME is a user attribute.
- B. CSCO_WEBVPN_USERNAME is a Cisco predefined variable that is used for macro substitution.
- C. The CSCO_WEBVPN_USERNAME variable is enabled by using the Post SSO plug-in.
- D. CSCO_SSO is a Cisco predefined variable that is used for macro substitution.
- E. The CSCO_SSO=1 parameter enables SSO for the SSH plug-in.
- F. The CSCO_SSO variable is enabled by using the Post SSO plug-in.

Correct Answer: BE

http://www.cisco.com/en/US/docs/security/asa/asa80/asdm60/ssl_vpn_deployment_guide/deploy.html

Introduction to URL Variable Substitution:

Your configuration will most likely require personalized resources that contain the username and password, for example, in URL lists or in group URLs. URL variable substitution lets the remote user enter username and password credentials once, when initiating the session, then login automatically to internal resources such as



Citrix, OWA, Sharepoint, and the internal portal.

Clientless SSL VPN supports the following macro substitutions:

CSCO_WEBVPN_USERNAME--User login name

CSCO_WEBVPN_PASSWORD--Obtained from user login password

CSCO_WEBVPN_INTERNAL_PASSWORD--Obtained from the Internal password field. You can use this field as Domain for Single Signon operations.

CSCO_WEBVPN_CONNECTION_PROFILE--User login group drop-down (tunnel group alias)

CSCO_WEBVPN_MACRO1--Set via Radius or LDAP vendor specific attribute CSCO_WEBVPN_MACRO2--Set via Radius or LDAP vendor specific attribute Each time the security appliance recognizes one of these strings in an end-user

request, it replaces the string with the user-specific value before passing the request to a remote server.

For example, a URL list that contains the link:

http://someserver/homepage/CSCO_WEBVPN_USERNAME.

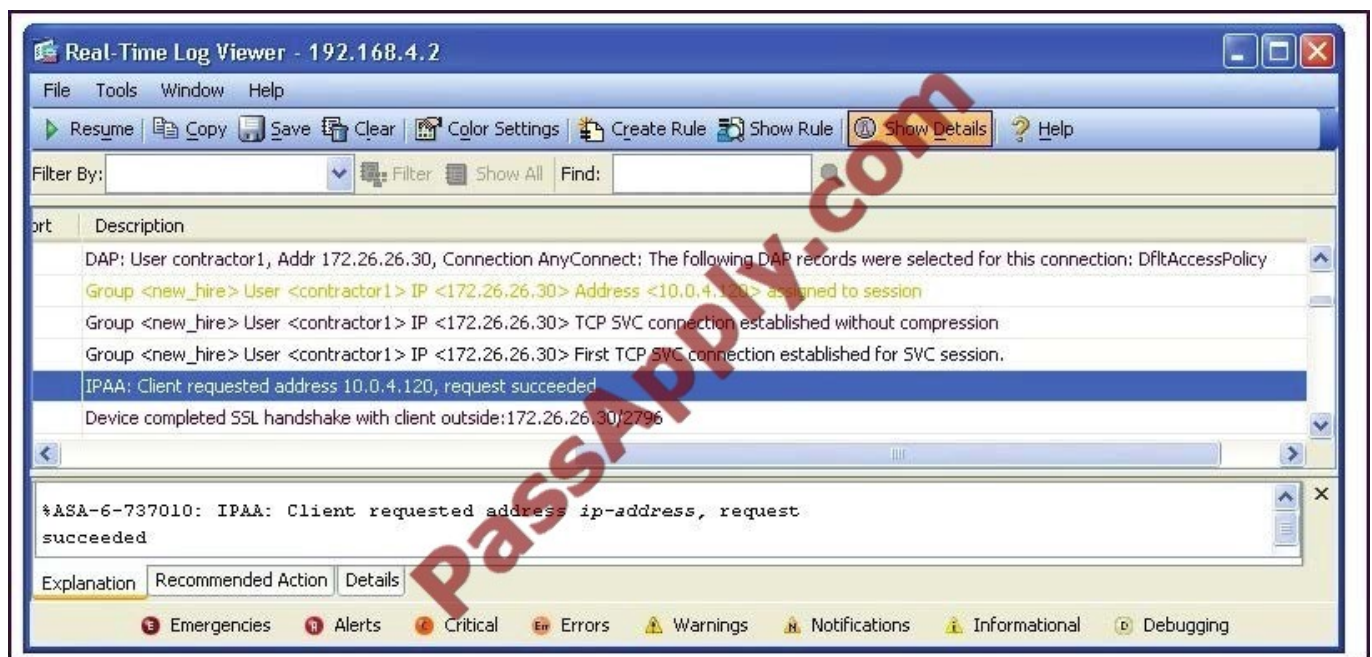
Html is translated by the security appliance to the following links for SSL VPN USER1 and USER2:

<http://someserver/homepage/USER1.html>

<http://someserver/homepage/USER2.html>

QUESTION 5

Refer to the exhibit.



After being with the company for more than six months, Sue is no longer considered a new hire employee. In converting



her from a new hire to a full-time employee, her SSL VPN address will change from the "Client requested address 10.0.4.120" to a random address from the employee address pool.

To "disable" the 10.0.4.120 IP address, the network administrator should navigate to which Cisco ASDM pane?

- A. Connection Profile
- B. Group Policies
- C. Local Users
- D. Address Pools

Correct Answer: C

Users are assigned IP addresses based on the address pool associated with their group. Change group of Sue to use employee address pool

Add/Edit Tunnel Group > General > Advanced

The Add or Edit Tunnel Group window, General, Advanced dialog box, lets you configure the following interface-specific attributes:

- Interface-Specific Authentication Server Groups—Lets you configure an interface and server group for authentication.
 - Interface—Lists available interfaces for selection.
 - Server Group—Lists authentication server groups available for this interface.
 - Use LOCAL if server group fails—Enables or disables fallback to the LOCAL database if the server group fails.
 - Add—Adds the association between the selected available interface and the authentication server group to the assigned list.
 - Remove—Moves the selected interface and authentication server group association from the assigned list to the available list.
 - Interface/Server Group/Use Fallback—Show the selections you have added to the assigned list.
- Interface-Specific Client IP Address Pools—Lets you specify an interface and Client IP address pool. You can have up to 6 pools.
 - Interface—Lists the available interfaces to add.
 - Address Pool—Lists address pools available to associate with this interface.
 - Add—Adds the association between the selected available interface and the client IP address pool to the assigned list.
 - Remove—Moves the selected interface/address pool association from the assigned list to the available list.
 - Interface/Address Pool—Shows the selections you have added to the assigned list.



To Read the [Whole Q&As](#), please purchase the [Complete Version](#) from [Our website](#).

Try our product !

100% Guaranteed Success
100% Money Back Guarantee
365 Days Free Update
Instant Download After Purchase
24x7 Customer Support
Average 99.9% Success Rate
More than 800,000 Satisfied Customers Worldwide
Multi-Platform capabilities - [Windows](#), [Mac](#), [Android](#), [iPhone](#), [iPod](#), [iPad](#), [Kindle](#)

We provide exam PDF and VCE of Cisco, Microsoft, IBM, CompTIA, Oracle and other IT Certifications. You can view Vendor list of All Certification Exams offered:

<https://www.passapply.com/allproducts>

Need Help

Please provide as much detail as possible so we can best assist you.
To update a previously submitted ticket:



 <p>One Year Free Update Free update is available within One Year after your purchase. After One Year, you will get 50% discounts for updating. And we are proud to boast a 24/7 efficient Customer Support system via Email.</p>	 <p>Money Back Guarantee To ensure that you are spending on quality products, we provide 100% money back guarantee for 30 days from the date of purchase.</p>	 <p>Security & Privacy We respect customer privacy. We use McAfee's security service to provide you with utmost security for your personal information & peace of mind.</p>
---------------------------------------------------------------------------------------------------------------------------------------------------------------------------------------------------------------------------------------------------------------------------------------------------------------------------------	-------------------------------------------------------------------------------------------------------------------------------------------------------------------------------------------------------------------------------------------------------------	------------------------------------------------------------------------------------------------------------------------------------------------------------------------------------------------------------------------------------------------------------------------------------

Any charges made through this site will appear as Global Simulators Limited.
All trademarks are the property of their respective owners.
Copyright © passapply, All Rights Reserved.