



642-647^{Q&As}

Deploying Cisco ASA VPN Solutions (VPN v1.0)

Pass Cisco 642-647 Exam with 100% Guarantee

Free Download Real Questions & Answers **PDF** and **VCE** file from:

<https://www.passapply.com/642-647.html>

100% Passing Guarantee
100% Money Back Assurance

Following Questions and Answers are all new published by Cisco
Official Exam Center

-  **Instant Download** After Purchase
-  **100% Money Back** Guarantee
-  **365 Days** Free Update
-  **800,000+** Satisfied Customers





QUESTION 1

While configuring a new clientless SSL VPN group in Cisco ASDM, the administrator chooses to accept a number of the default parameter values. The administrator decides to view the actual value for the parameter, rather than just checking the inherit box.

Under which default group can the administrator verify the default value for the group parameter?

- A. DefaultRAGroup
- B. DefaultWEBVPNGroup
- C. DfltGrpPolicy
- D. DefaultSVCGroup

Correct Answer: C

QUESTION 2

When troubleshooting a site-to-site IPsec VPN deployment, you see a QM FSM message. What is the most likely cause of this message?

- A. The Quick Mode timers have expired.
- B. There are mismatched proxy identities.
- C. Forward Secrecy Mode has failed.
- D. IKE Phase 1 has failed authentication due to mismatched DH groups.

Correct Answer: B

QUESTION 3

Refer to the exhibit.

```
access-list outside_cryptomap_1 line 1 extended deny tcp any host 10.0.4.4 eq https
access-list outside_cryptomap_1 line 1 extended permit tcp any host 10.0.4.0 255.255.255.0 eq https
crypto map outside_map 1 match address outside_cryptomap_1
```

In the CLI snippet that is shown, what is the function of the deny option in the access list?

- A. When set in conjunction with outbound connection-type bidirectional, its function is to prevent the specified traffic from being protected by the crypto map entry.
- B. When set in conjunction with connection-type originate-only, its function is to instruct the Cisco ASA to deny specific inbound traffic if it is not encrypted.
- C. When set in conjunction with outbound connection-type answer-only, its function is to instruct the Cisco ASA to deny



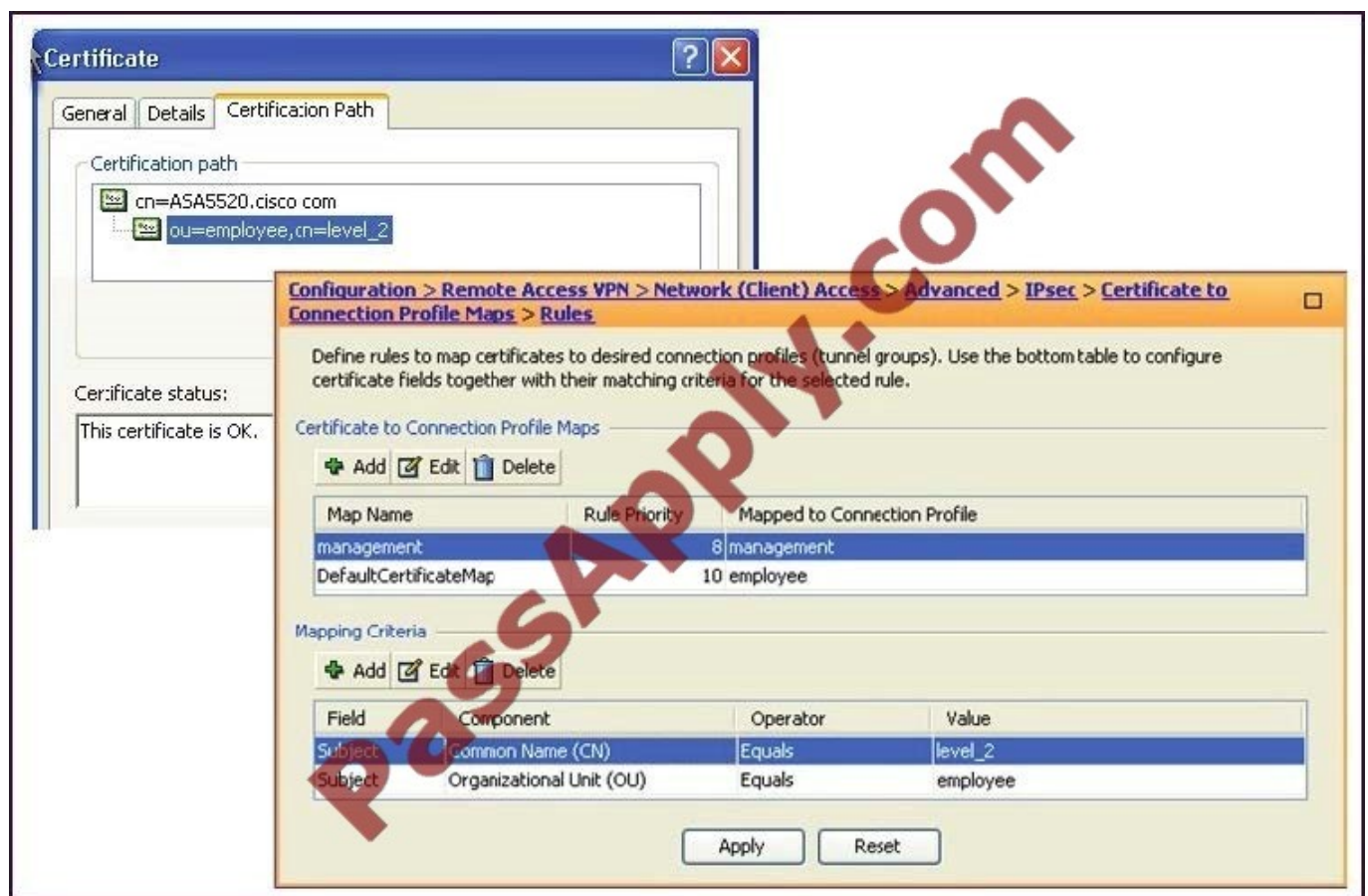
specific outbound traffic if it is not encrypted.

D. When set in conjunction with connection-type originate-only, its function is to cause all IP traffic that matches the specified conditions to be protected by the crypto map.

Correct Answer: A

QUESTION 4

Refer to the exhibit.



The ABC Corporation is changing remote-user authentication from pre-shared keys to certificate-based authentication. For most employee authentication, its group membership (the employees) governs corporate access. Certain management personnel need access to more confidential servers. Access is based on the group and name, such as finance and level_2. When it is time to pilot the new authentication policy, a finance manager is able to access the department-assigned servers but cannot access the restricted servers.

As the network engineer, where would you look for the problem?

- A. Check the validity of the identity and root certificate on the PC of the finance manager.
- B. Change the Management Certificate to Connection Profile Maps > Rule Priority to a number that is greater than 10.
- C. Check if the Management Certificate to Connection Profile Maps > Rules is configured correctly.
- D. Check if the Certificate to Connection Profile Maps > Policy is set correctly.



Correct Answer: D

QUESTION 5

Refer to the exhibit.

Username	Privilege Level (Role)	Access Restrictions	VPN Group Policy	VPN Group Lock
employee1	15	Full	employee	-- Inherit Group Polic...
manager1	2	No ASDM/CLI	management	-- Inherit Group Polic...
contractor	15	Full	-- Inherit Group Policy --	-- Inherit Group Polic...
contractor1	2	No ASDM/CLI	new_hire	-- Inherit Group Polic...

When the user "contractor" Cisco AnyConnect tunnel is established, what type of Cisco ASA user restrictions are applied to the tunnel?

- A. full restrictions (no Cisco ASDM, no CLI, no console access)
- B. full restrictions (no read, no write, no execute permissions)
- C. full restrictions (CLI show commands and Cisco ASDM monitoring permissions only)
- D. full access with no restrictions

Correct Answer: D

[Latest 642-647 Dumps](#)

[642-647 Practice Test](#)

[642-647 Study Guide](#)



VCE & PDF

PassApply.com

<https://www.passapply.com/642-647.html>

2021 Latest passapply 642-647 PDF and VCE dumps Download

To Read the [Whole Q&As](#), please purchase the [Complete Version](#) from [Our website](#).

Try our product !

100% Guaranteed Success

100% Money Back Guarantee

365 Days Free Update

Instant Download After Purchase

24x7 Customer Support

Average 99.9% Success Rate

More than 800,000 Satisfied Customers Worldwide

Multi-Platform capabilities - [Windows](#), [Mac](#), [Android](#), [iPhone](#), [iPod](#), [iPad](#), [Kindle](#)

We provide exam PDF and VCE of Cisco, Microsoft, IBM, CompTIA, Oracle and other IT Certifications. You can view Vendor list of All Certification Exams offered:

<https://www.passapply.com/allproducts>

Need Help

Please provide as much detail as possible so we can best assist you.

To update a previously submitted ticket:



 One Year Free Update <p>Free update is available within One Year after your purchase. After One Year, you will get 50% discounts for updating. And we are proud to boast a 24/7 efficient Customer Support system via Email.</p>	 Money Back Guarantee <p>To ensure that you are spending on quality products, we provide 100% money back guarantee for 30 days from the date of purchase.</p>	 Security & Privacy <p>We respect customer privacy. We use McAfee's security service to provide you with utmost security for your personal information & peace of mind.</p>
-----------------------------------------------------------------------------------------------------------------------------------------------------------------------------------------------------------------------------------------------------------------------------------------------------------------------------	---------------------------------------------------------------------------------------------------------------------------------------------------------------------------------------------------------------------------------------------------------	--------------------------------------------------------------------------------------------------------------------------------------------------------------------------------------------------------------------------------------------------------------------------------

Any charges made through this site will appear as Global Simulators Limited.

All trademarks are the property of their respective owners.

Copyright © passapply, All Rights Reserved.