



# 642-427<sup>Q&As</sup>

Troubleshooting Cisco Unified Communications v8.0 (TVOICE v8.0)

## Pass Cisco 642-427 Exam with 100% Guarantee

Free Download Real Questions & Answers **PDF** and **VCE** file from:

<https://www.passapply.com/642-427.html>

100% Passing Guarantee  
100% Money Back Assurance

Following Questions and Answers are all new published by Cisco  
Official Exam Center

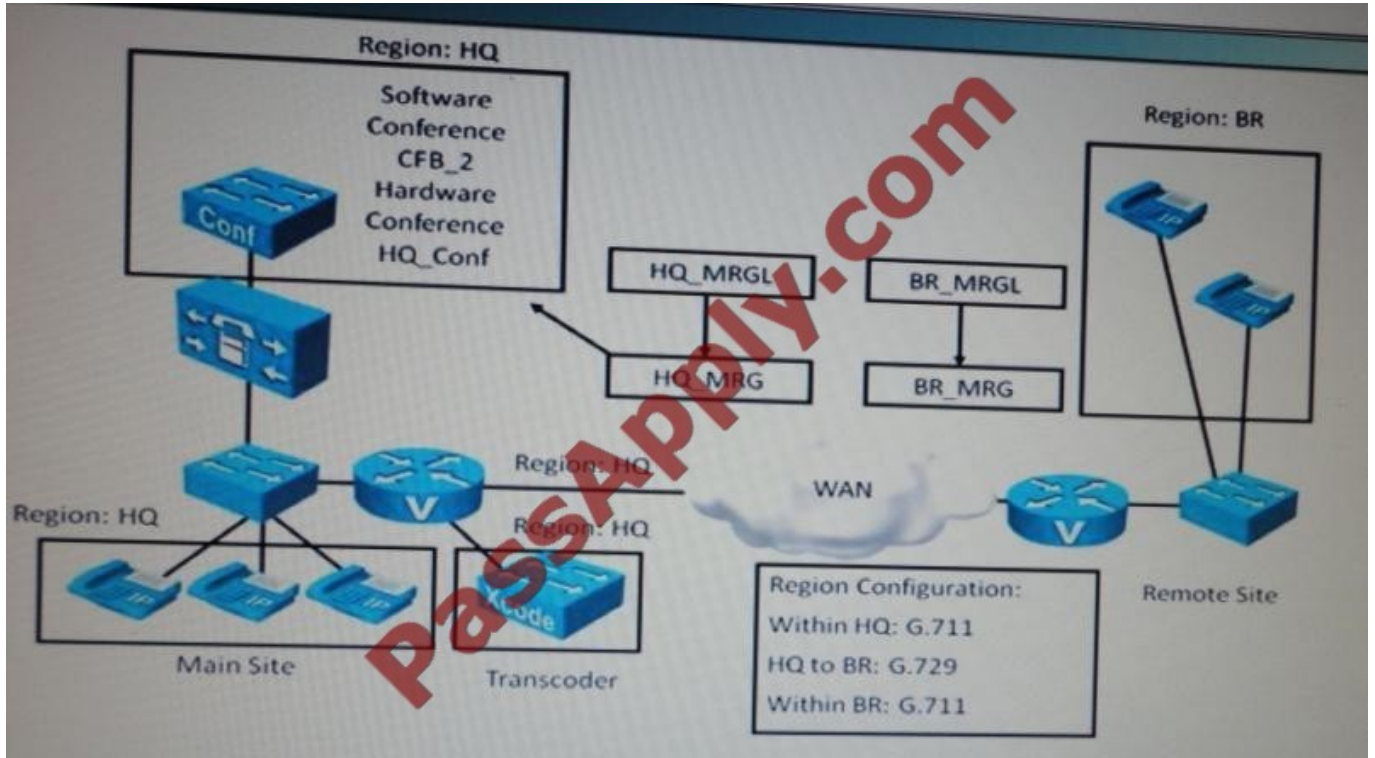
-  **Instant Download** After Purchase
-  **100% Money Back** Guarantee
-  **365 Days** Free Update
-  **800,000+** Satisfied Customers





### QUESTION 1

Refer to the exhibits.



The HQ\_MRQ that is shown in the exhibit is assigned to an MRGL, which is configured at the HQ phones. A call exists between two HQ phones that use G.711 codec. When one of the HQ users attempts to conference a BR phone across the

WAN, the conference fails.

The SDI trace shows an error "No transcoder device configured."

Which statement indicates the correct resolution or reason for the issue?



Bridge Status

Conference Bridges (1 - 2 of 2)

Find Conference Bridges where Name begins with Find Clear Filter

Conference Bridge Name	Description	Device Pool	Status
<a href="#">CFB_2</a>	CFB_CUCM801Pub1	Default	Registered with
<a href="#">HQ_Conf</a>	HQ_Conf	Default	Registered with

Find Clear Filter

Description	Device Pool	Status	IP Address
CFB_CUCM801Pub1	Default	Registered with 10.1.5.10	10.1.5.10
HQ_Conf	Default	Registered with 10.1.5.10	10.1.110.1

```
IOS Config
!
sccp local GigabitEthernet0/0.110
sccp ccm 10.1.5.10 identifier 1 version 7.0
sccp
!
sccp ccm group 1
associate ccm 1 priority 1
associate profile 1 register HQ_Conf
!
dspfarm profile 1 conference
codec g711ulaw
codec g711alaw
codec g729ar8
codec g729abr8
codec g729r8
codec g729br8
maximum sessions 5
associate application SCCP
!
```

MRG

Media Resource Group Information

Name\* MRG\_HQ

Description

---

Devices for this Group

Available Media Resources\*

- ANN\_2
- HQ\_MTP
- HQ\_SIP\_MTP
- MOH\_2[Multicast]
- MTP\_2

Selected Media Resources\*

- CFB\_2 (CFB)
- HQ\_Conf (CFB)

Use Multi-cast for MOH Audio (If at least one multi-cast MOH resource is available)





D:\job\TestKing\Cisco\642-427\HYPERLINK

```
CCM Trace
0,56,1.13786*10.1.5.11**
06:20:55.359 |MediaManager(337)::allocateProxies, j=1 XferMode(8 0) CI(18151496 0) mrid(0 0) resrcCI(0 18151496) [1,100,56,1.13786*10.1.5.11**
06:20:55.359 |MediaManager(337)::allocateProxies, allocating resources(1), additional res(0)[1,100,56,1.13786*10.1.5.11**
06:20:55.359 |MediaResourceManager::waiting_MrmAllocateXcoderResourceReq - CI=18151496, Count=1 [1,100,56,1.13786*10.1.5.11**
06:20:55.359 |MRM::convertScmStringToStdString MRG_HQ[1,100,56,1.13786*10.1.5.11**
06:20:55.359 |MRM::getXcodeDeviceGivenMrgl[1,100,56,1.13786*10.1.5.11**
06:20:55.359 |MRM::getXcodeDeviceGivenMrgl GETTING XCODE FROM DEFAULT LIST[1,100,56,1.13786*10.1.5.11**
06:20:55.359 |MediaResourceManager::sendAllocationResourceErr - ERROR - no transcoder device configured[1,100,56,1.13786*10.1.5.11**
06:20:55.359 |GenAlarm: AlarmName = MediaResourceListExhausted, subFac = CALLMANAGER, Param = , severity = 4, AlarmMsg = MediaResourceListExhausted
MediaResourceType : 2
AppID : Cisco CallManager
ClusterID : CID10.1.5.10
NodeID : CUCM801Pub1
*****
06:20:55.359 |GenAlarm: Push_back offset 69 seq 69j*****
06:20:55.359 |MediaManager(337)::wait_AllocateMtpResourceErr, resCI=18151496, numRes=1, numPreRes=0[1,100,56,1.13786*10.1.5.11**
06:20:55.359 |MediaManager(337)::reAdjustConnectionList, CbXcoderWRF02832[0][1,100,56,1.13786*10.1.5.11**
06:20:55.359 |MediaManager(337)::wait_AllocateMtpResourceErr, reAdjustConnList=0, numRsrcRes=1, sizeRsrcList=1, failCall=1 resAllocationFailCode=0
0.1.5.11**
06:20:55.360 |MediaManager(337)::cleanUp, send AuUpdateDisconnectStatus, reconnectType=0, sendErrIndToParent=0, failCall=1[1,100,56,1.13786*10.1.5.11**
06:20:55.360 |MediaManager(337) - cleanupNewlyAllocatedResource - resourceCI(18151496), deallocated(1), MRM(1,1)[1,100,56,1.13786*10.1.5.11**
06:20:55.360 |MediaManager(337)::disconnOnResourceAllocationFailure, ERROR - disconnOnResourceAllocationFailure - fails to allocate MTPXCoder,conn
```

- A. The BR phone does not have access to the HO\_Conf bridge
- B. The BR phone does not have access to the CFB\_2 bridge
- C. The BR phone does not have access to a transcoder
- D. The CFB\_2 bridge should be removed from the HQ\_MRG and assigned to an MRG that is not assigned to an MRGL
- E. The CFB\_2 bridge should be listed last in the HO\_MRG

Correct Answer: E

## QUESTION 2

Refer to the exhibit.



```
HQ-1#debug ip rsvp resv
RSVP: 10.1.250.102_19284->10.1.250.101_19330[0.0.0.0]: start requesting 40 kbps FF
reservation on Serial0/1/0.121, neighbor 10.1.6.102
RSVP: session 10.1.250.102_19284[0.0.0.0]: Received Resv message from 10.1.6.102 (on
Serial0/1/0.121)
RSVP-RESV: Admitting new reservation: 466CE1F0
RSVP-RESV: reservation was installed: 466CE1F0
...truncated...
RSVP: session 10.1.250.102_19284[0.0.0.0]: Received Resv message from 10.1.6.102 (on
Serial0/1/0.121)
RSVP: 10.1.250.101_19330->10.1.250.102_19284[0.0.0.0]: Resv changed: FLOWSPEC,
RSVP: 10.1.250.101_19330->10.1.250.102_19284[0.0.0.0]: process_reservation_change: Resv
change requires triggering of Resv upstream
RSVP-RESV: accept_reservation_change: 466CE1F0
RSVP-RESV: reservation was installed: 466CE1F0
...truncated...
RSVP: 10.1.250.102_19284->10.1.250.101_19330[0.0.0.0]: start requesting 24 kbps FF
reservation on Serial0/1/0.121, neighbor 10.1.6.102
RSVP: 10.1.250.102_19284->10.1.250.101_19330[0.0.0.0]: Resv refresh (msec), config:
30000 curr: 30000 min: 30000
RSVP: 10.1.250.102_19284->10.1.250.101_19330[0.0.0.0]: Sending Resv message to
10.1.6.102
```

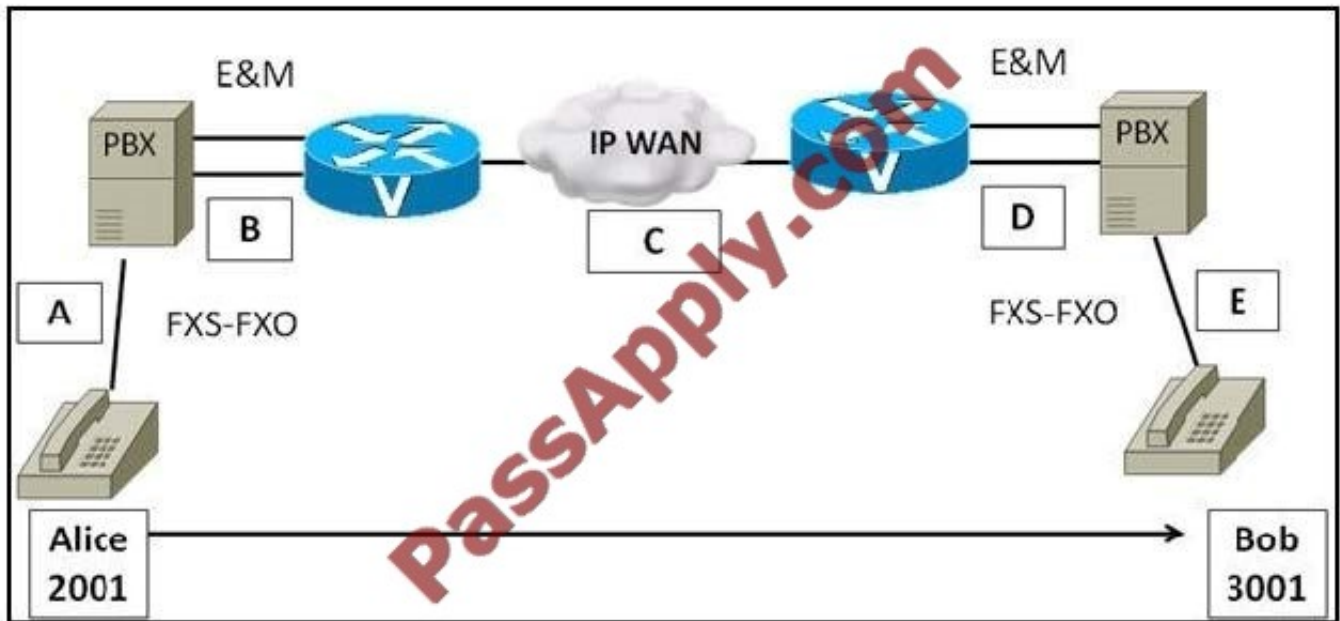
The exhibit shows the output of a successful RSVP call setup that uses G.729 codec. What should the minimum bandwidth configuration on interface serial 0/1/0.121 for the command ip rsvp bandwidth be?

- A. 8 Kb/S
- B. 16 Kb/S
- C. 24 Kb/S
- D. 32 Kb/S
- E. 40 Kb/S

Correct Answer: E

### QUESTION 3

Refer to the exhibit.



When Alice at extension 2001 places a call to Bob at extension 3001, Bob hears Alice's voice twice. What type of echo is this classified as?

- A. Talker echo.
- B. Listener echo.
- C. Tail circuit echo.
- D. Front end circuit echo.

Correct Answer: B

#### QUESTION 4

Under normal conditions, what is the Cisco default attenuation level on a gateway?

- A. 0
- B. -6
- C. -15
- D. 3

Correct Answer: A



#### QUESTION 5

Which Cisco Unity troubleshooting tool would be used to diagnose problems with skinny and MWI messages?

- A. Cisco Unity Performance Information and Diagnostics
- B. Unity Diagnostic Tool
- C. Integration Monitor
- D. SysCheck

Correct Answer: B

[Latest 642-427 Dumps](#)

[642-427 Practice Test](#)

[642-427 Study Guide](#)



To Read the [Whole Q&As](#), please purchase the [Complete Version](#) from [Our website](#).

## Try our product !

100% Guaranteed Success  
100% Money Back Guarantee  
365 Days Free Update  
Instant Download After Purchase  
24x7 Customer Support  
Average 99.9% Success Rate  
More than 800,000 Satisfied Customers Worldwide  
Multi-Platform capabilities - [Windows](#), [Mac](#), [Android](#), [iPhone](#), [iPod](#), [iPad](#), [Kindle](#)

We provide exam PDF and VCE of Cisco, Microsoft, IBM, CompTIA, Oracle and other IT Certifications. You can view Vendor list of All Certification Exams offered:

<https://www.passapply.com/allproducts>

## Need Help

Please provide as much detail as possible so we can best assist you.  
To update a previously submitted ticket:



 <p><b>One Year Free Update</b> Free update is available within One Year after your purchase. After One Year, you will get 50% discounts for updating. And we are proud to boast a 24/7 efficient Customer Support system via Email.</p>	 <p><b>Money Back Guarantee</b> To ensure that you are spending on quality products, we provide 100% money back guarantee for 30 days from the date of purchase.</p>	 <p><b>Security &amp; Privacy</b> We respect customer privacy. We use McAfee's security service to provide you with utmost security for your personal information &amp; peace of mind.</p>
---	---	--

Any charges made through this site will appear as Global Simulators Limited.  
All trademarks are the property of their respective owners.  
Copyright © passapply, All Rights Reserved.