



642-035^{Q&As}

Troubleshooting Cisco Data Center Unified Computing

Pass Cisco 642-035 Exam with 100% Guarantee

Free Download Real Questions & Answers **PDF** and **VCE** file from:

<https://www.passapply.com/642-035.html>

100% Passing Guarantee
100% Money Back Assurance

Following Questions and Answers are all new published by Cisco
Official Exam Center

-  **Instant Download** After Purchase
-  **100% Money Back** Guarantee
-  **365 Days** Free Update
-  **800,000+** Satisfied Customers





QUESTION 1

Which two types of ports are MAC addresses when operating in switch mode? (Choose two.)

- A. uplink
- B. FEX
- C. server
- D. backplane

Correct Answer: AC

QUESTION 2

You have blade servers that run VMware ESXi. Which two tasks do you perform to ensure that all of the components in the Cisco UCS environment use jumbo frames? (Choose two.)

- A. Use a QoS policy for the jumbo frames.
- B. Configure the MTU on the vSwitch.
- C. Configure the fabric interconnect to support 9500-byte frames.
- D. Configure the MTU on the vNIC.
- E. Configure a QoS policy on the vSwitch.

Correct Answer: AB

QUESTION 3

After a Cisco UCS Manager upgrade, you discover issues relating to the IQN of several service profiles. Which two options are possible causes of the problem? (Choose two.)

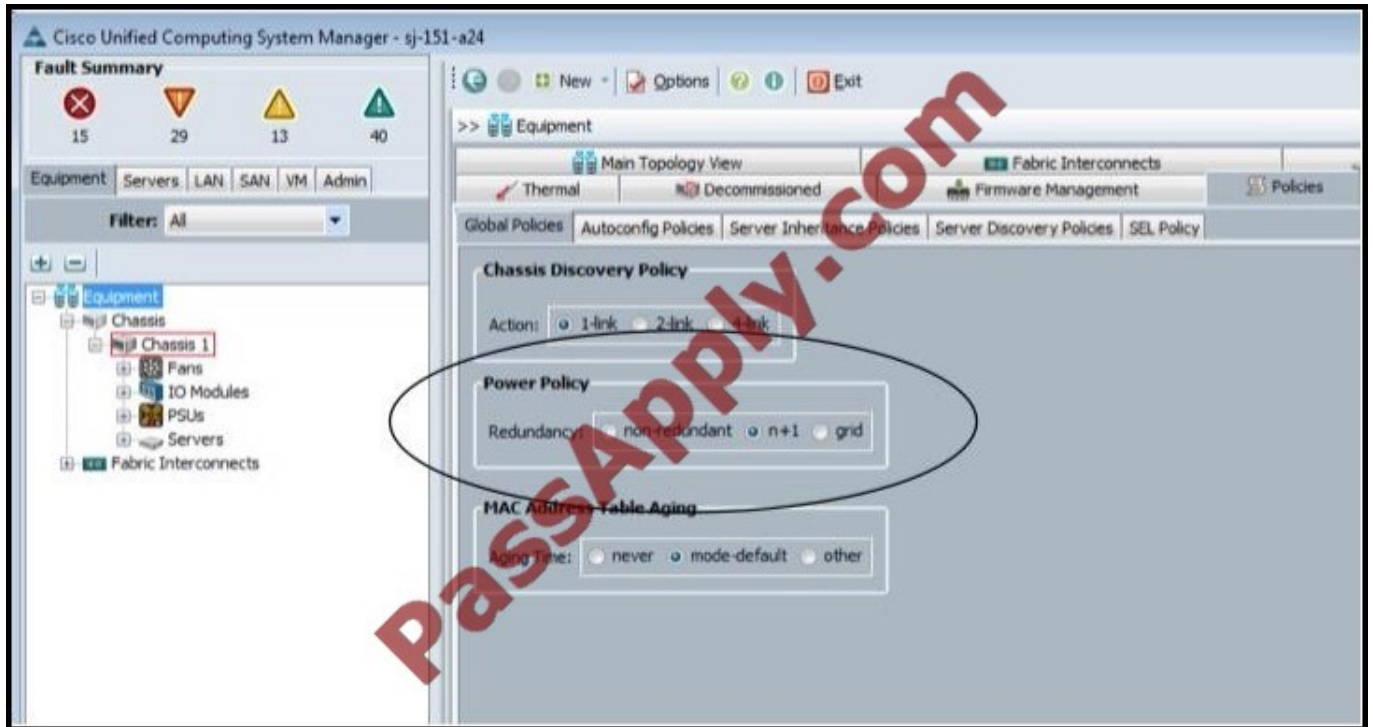
- A. duplicate service profiles
- B. a duplicate IQN within a service profile
- C. a duplicate IQN across multiple service profiles
- D. an unsuccessful upgrade
- E. incorrect VSAN settings

Correct Answer: BC

QUESTION 4



Refer to the exhibit.



Which type of power policy is shown when referring to a Cisco UCS environment?

- A. chassis
- B. blade server
- C. fabric interconnect
- D. global
- E. switch

Correct Answer: D

QUESTION 5

Refer to the exhibit.



```
eth0      Link encap:Ethernet  HWaddr 00:05:9B:28:F6:00
          inet addr:10.68.68.138  Bcast:10.255.255.255  Mask:255.255.255.128
          UP BROADCAST RUNNING MULTICAST  MTU:1500  Metric:1
          RX packets:106649126  errors:0  dropped:0  overruns:0  frame:0
          TX packets:65396757  errors:0  dropped:0  overruns:0  carrier:0
          collisions:0 txqueuelen:1000
          RX bytes:36077248749 (33.5 GiB)  TX bytes:20518952142 (19.1 GiB)
          Base address:0x8020  Memory:fcaa0000-fcac0000

eth1      Link encap:Ethernet  HWaddr 00:05:9B:28:F6:01
          BROADCAST MULTICAST  MTU:1500  Metric:1
          RX packets:0  errors:0  dropped:0  overruns:0  frame:0
          TX packets:0  errors:0  dropped:0  overruns:0  carrier:0
          collisions:0 txqueuelen:1000
          RX bytes:0 (0.0 b)  TX bytes:0 (0.0 b)
          Base address:0x8000  Memory:fca40000-fca60000

eth2      Link encap:Ethernet  HWaddr 00:05:9B:28:F6:03
          UP BROADCAST RUNNING PROMISC ALLMULTI MULTICAST  MTU:9216  Metric:1
          RX packets:94193864  errors:0  dropped:0  overruns:0  frame:0
          TX packets:67795040  errors:0  dropped:0  overruns:0  carrier:0
          collisions:0 txqueuelen:1000
          RX bytes:34700123260 (32.3 GiB)  TX bytes:44609130236 (41.5 GiB)
          Base address:0x6020  Memory:fc8a0000-fc8c0000

vlan4047  Link encap:Ethernet  HWaddr 00:05:9B:28:F6:04
          inet addr:127.9.0.1  Bcast:127.9.255.255  Mask:255.255.0.0
          UP BROADCAST RUNNING  MTU:1496  Metric:1
          RX packets:5210  errors:0  dropped:0  overruns:0  frame:0
          TX packets:14617  errors:0  dropped:0  overruns:0  carrier:0
          collisions:0 txqueuelen:0
          RX bytes:2259502 (2.1 MiB)  TX bytes:15350935 (14.6 MiB)
```

Which interface is configured as a management interface for the Cisco UCS chassis?

- A. eth0
- B. vlan4047
- C. eth1
- D. eth2

Correct Answer: A

[Latest 642-035 Dumps](#)

[642-035 PDF Dumps](#)

[642-035 Brindumps](#)



To Read the [Whole Q&As](#), please purchase the [Complete Version](#) from [Our website](#).

Try our product !

100% Guaranteed Success
100% Money Back Guarantee
365 Days Free Update
Instant Download After Purchase
24x7 Customer Support
Average 99.9% Success Rate
More than 800,000 Satisfied Customers Worldwide
Multi-Platform capabilities - [Windows](#), [Mac](#), [Android](#), [iPhone](#), [iPod](#), [iPad](#), [Kindle](#)

We provide exam PDF and VCE of Cisco, Microsoft, IBM, CompTIA, Oracle and other IT Certifications. You can view Vendor list of All Certification Exams offered:

<https://www.passapply.com/allproducts>

Need Help

Please provide as much detail as possible so we can best assist you.
To update a previously submitted ticket:



 <p>One Year Free Update Free update is available within One Year after your purchase. After One Year, you will get 50% discounts for updating. And we are proud to boast a 24/7 efficient Customer Support system via Email.</p>	 <p>Money Back Guarantee To ensure that you are spending on quality products, we provide 100% money back guarantee for 30 days from the date of purchase.</p>	 <p>Security & Privacy We respect customer privacy. We use McAfee's security service to provide you with utmost security for your personal information & peace of mind.</p>
---	---	--

Any charges made through this site will appear as Global Simulators Limited.
All trademarks are the property of their respective owners.
Copyright © passapply, All Rights Reserved.