



642-035^{Q&As}

Troubleshooting Cisco Data Center Unified Computing

Pass Cisco 642-035 Exam with 100% Guarantee

Free Download Real Questions & Answers **PDF** and **VCE** file from:

<https://www.passapply.com/642-035.html>

100% Passing Guarantee
100% Money Back Assurance

Following Questions and Answers are all new published by Cisco
Official Exam Center

-  **Instant Download** After Purchase
-  **100% Money Back** Guarantee
-  **365 Days** Free Update
-  **800,000+** Satisfied Customers





QUESTION 1

Which three components are updated using the Host Upgrade Utility? (Choose three.)

- A. BIOS
- B. Network Adapter(s)
- C. Array Controller
- D. Cisco IMC
- E. LOM port
- F. UCSM
- G. Drive Firmware

Correct Answer: ABD

QUESTION 2

If a server is not associated with a service profile, the activated firmware remains pending. Which two steps should you take? (Choose two.)

- A. Manually reboot the server.
- B. Reset the server to a new profile.
- C. Reset the unassociated server to activate the firmware.
- D. Reinitialize the firmware process with Cisco UCS Manager.
- E. Download the firmware and start over.
- F. Shut down gracefully and start over.

Correct Answer: AC

QUESTION 3

Looking at the Equipment > Chassis > Servers > Server X view from the Cisco UCS Manager GUI, which tab would you select to identify the fabric interconnect uplink associated with a given virtual circuit?

- A. Paths
- B. vNIC Paths
- C. Virtual Circuit Paths
- D. VIF Paths



Correct Answer: D

QUESTION 4



Instructions

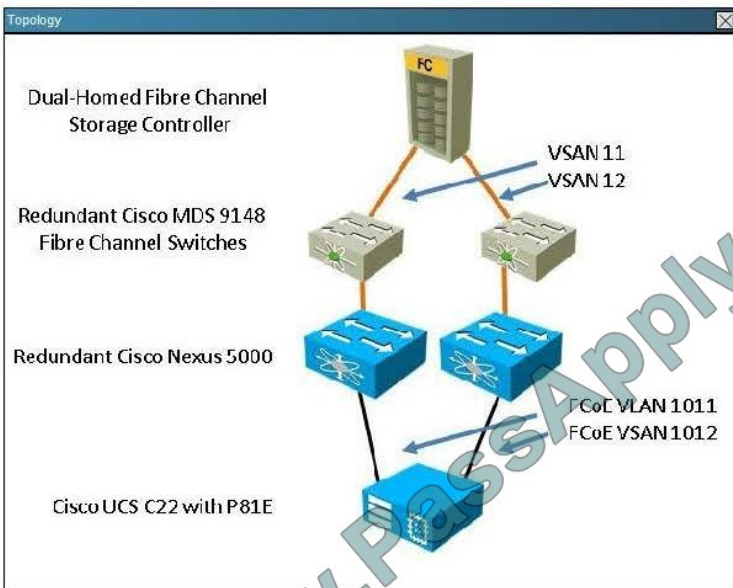
- THIS TASK DOES NOT REQUIRE DEVICE CONFIGURATION.
- Before beginning the questions, carefully read the information in the Scenario tab and familiarize yourself with the network topology.
- To access the multiple-choice questions, click on the numbered boxes on the left of the top panel.
- There are four multiple-choice questions with this task. Be sure to answer all four questions before clicking the Next button.
- Use the tabs at the bottom of the question to navigate between the Topology and question-specific Exhibits. Exhibit_1 maps to Question 1, and so on.

Scenario

Your customer has purchased a Cisco UCS C22 M2 server equipped with an LSI MegaRAID 9260-4i, four SAS hard drives, and a Cisco UCS P81E VIC.

Because Fibre Channel storage is at a premium at this data center, the customer decides to boot VMware ESXi 5.0 from local storage and attach to the VMs on a VMFS LUN on a Fibre Channel storage controller with a large RAID array.

The customer is encountering issues connecting to local storage, and you are called on-site to get the server into production.



Exhibit_1

192.168.10.45 - KVM Console

File View Macros Tools Help

KVM VM

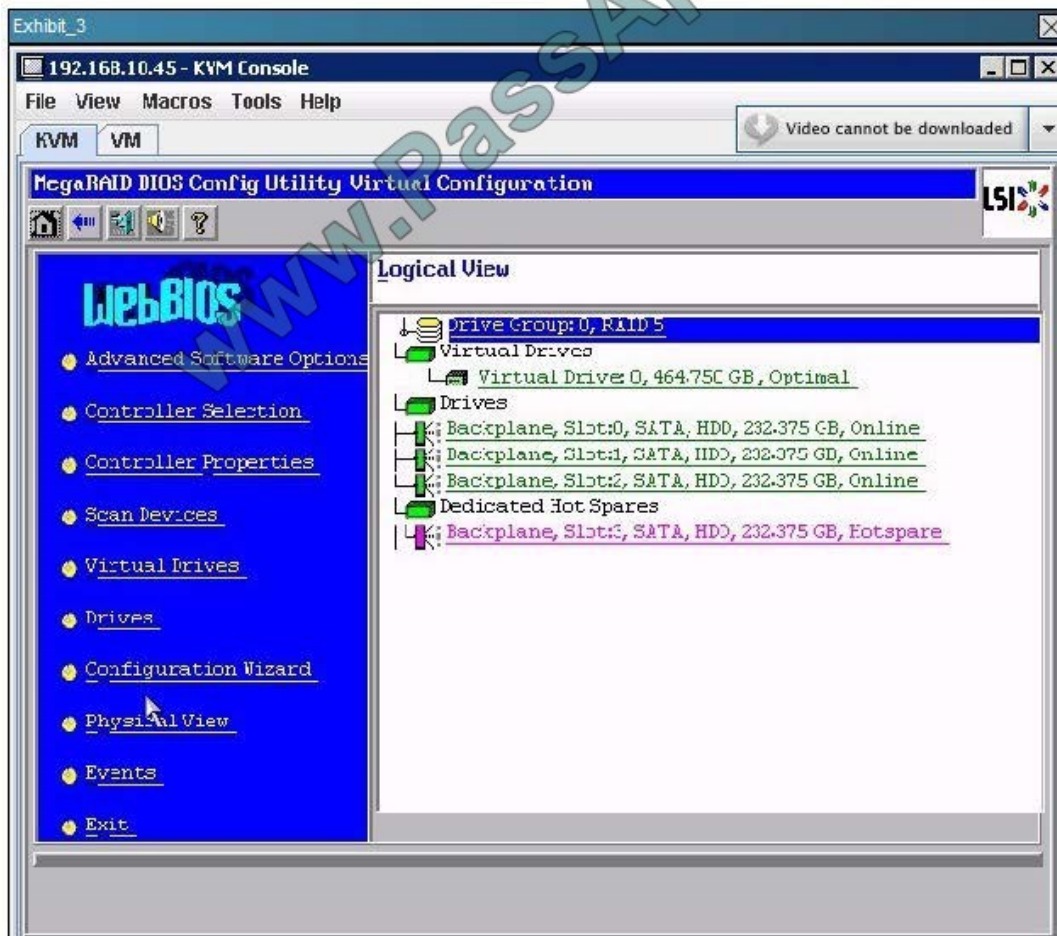
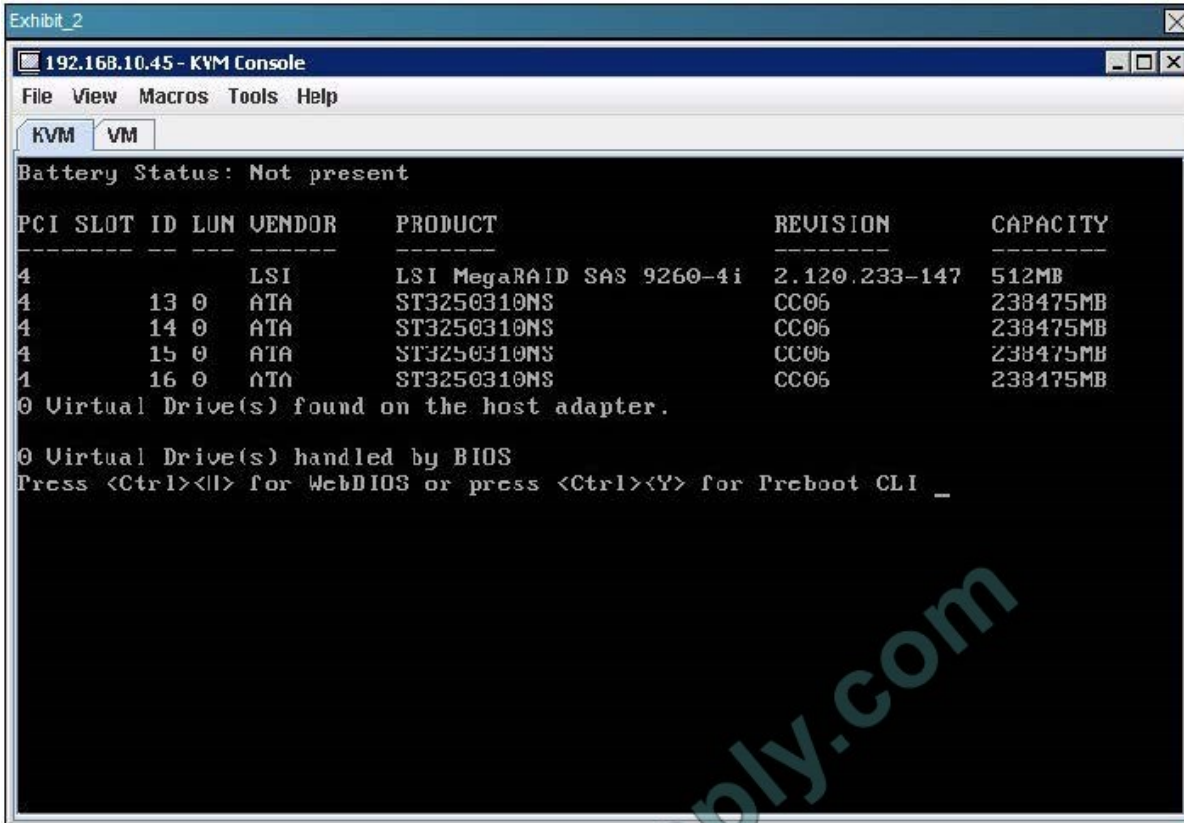
VMware ESXi 5.0.0 Installer

Select a Disk to Install or Upgrade

× Contains a VMFS partition

Storage Device	Capacity
Local: (none)	
Remote: * DGC RAID 5 (naa.60060160a40425095edab...)	200.00 GiB

(Esc) Cancel (F1) Details (F5) Refresh (Enter) Continue





```
Exhibit_4
192.168.10.45 - KVM Console
File View Macros Tools Help
KVM VM
Battery Status: Not present

PCI SLOT ID LUN VENDOR PRODUCT REVISION CAPACITY
-----
4          13 0 ATA ST3250310NS CC06 238475MB
4          14 0 ATA ST3250310NS CC06 238475MB
4          15 0 ATA ST3250310NS CC06 238475MB
4          16 0 ATA ST3250310NS CC06 238475MB
4          0 LSI Virtual Drive RAID5 475904MB
1 Virtual Drive(s) found on the host adapter.

1 Virtual Drive(s) handled by BIOS
Press <Ctrl><H> for WebBIOS or press <Ctrl><Y> for Preboot CLI
```

Point and Shoot:

Questions

- 1 You connect to the Cisco IMC and map virtual media to the VMware ESXi ISO file and successfully boot the installer.
- 2
- 3
- 4 However, refer to Exhibit_1 and examine the installer screen. When the installer scans the bus for storage, only the 200-GB VMFS volume or the Fibre Channel LUN is present. No local storage can be accessed by the ESXi installer on the LSI MegaRAID 9260-4i.

Which of these is the most likely explanation for this issue?

- The LSI 9260-4i driver needs to be slip-streamed into the installer ISO.
- The LSI 9260-4i is not on the VMware Hardware Compatibility Guide.
- The LSI 9260-4i is defective.
- The LSI 9260-4i is misconfigured.

Hot Area:



Questions

1 You connect to the Cisco IMC and map virtual media to the VMware ESXi ISO file and successfully boot the installer.

2

3

4 However, refer to Exhibit_1 and examine the installer screen. When the installer scans the bus for storage, only the 200-GB VMFS volume or the Fibre Channel LUN is present. No local storage can be accessed by the ESXi installer on the LSI MegaRAID 9260-4i.

Which of these is the most likely explanation for this issue?

The LSI 9260-4i driver needs to be slip-streamed into the installer ISO.

The LSI 9260-4i is not on the VMware Hardware Compatibility Guide.

The LSI 9260-4i is defective.

The LSI 9260-4i is misconfigured.

Correct Answer:

Questions

1 You connect to the Cisco IMC and map virtual media to the VMware ESXi ISO file and successfully boot the installer.

2

3

4 However, refer to Exhibit_1 and examine the installer screen. When the installer scans the bus for storage, only the 200-GB VMFS volume or the Fibre Channel LUN is present. No local storage can be accessed by the ESXi installer on the LSI MegaRAID 9260-4i.

Which of these is the most likely explanation for this issue?

The LSI 9260-4i driver needs to be slip-streamed into the installer ISO.

The LSI 9260-4i is not on the VMware Hardware Compatibility Guide.

The LSI 9260-4i is defective.

The LSI 9260-4i is misconfigured.

QUESTION 5

A customer has Server1 working properly, configured to boot over SAN and with service profile SP1 assigned. This service profile is cloned to service profile SP2 and assigned to Server2. Before Server2 boots, which three actions need to be performed? (Choose three.)

- A. Check the WWPN that is assigned to the vHBAs on SP2.
- B. Check the MAC address that is assigned to the vNICs on SP2.
- C. Add two vHBAs and assign them to the proper VSAN.
- D. Add the pWWN of SP2 to the zoning on the SAN switch.
- E. Change the boot target on SP2.
- F. Change the IP address of the vNICs.



Correct Answer: ADE

[642-035 VCE Dumps](#)

[642-035 Practice Test](#)

[642-035 Exam Questions](#)



To Read the [Whole Q&As](#), please purchase the [Complete Version](#) from [Our website](#).

Try our product !

- 100% Guaranteed Success
- 100% Money Back Guarantee
- 365 Days Free Update
- Instant Download After Purchase
- 24x7 Customer Support
- Average 99.9% Success Rate
- More than 800,000 Satisfied Customers Worldwide
- Multi-Platform capabilities - [Windows](#), [Mac](#), [Android](#), [iPhone](#), [iPod](#), [iPad](#), [Kindle](#)

We provide exam PDF and VCE of Cisco, Microsoft, IBM, CompTIA, Oracle and other IT Certifications. You can view Vendor list of All Certification Exams offered:

<https://www.passapply.com/allproducts>

Need Help

Please provide as much detail as possible so we can best assist you.
To update a previously submitted ticket:



 <p>One Year Free Update Free update is available within One Year after your purchase. After One Year, you will get 50% discounts for updating. And we are proud to boast a 24/7 efficient Customer Support system via Email.</p>	 <p>Money Back Guarantee To ensure that you are spending on quality products, we provide 100% money back guarantee for 30 days from the date of purchase.</p>	 <p>Security & Privacy We respect customer privacy. We use McAfee's security service to provide you with utmost security for your personal information & peace of mind.</p>
---	---	--

Any charges made through this site will appear as Global Simulators Limited.
All trademarks are the property of their respective owners.
Copyright © passapply, All Rights Reserved.