



# 600-660<sup>Q&As</sup>

Implementing Cisco Application Centric Infrastructure - Advanced

## Pass Cisco 600-660 Exam with 100% Guarantee

Free Download Real Questions & Answers **PDF** and **VCE** file from:

<https://www.passapply.com/600-660.html>

100% Passing Guarantee  
100% Money Back Assurance

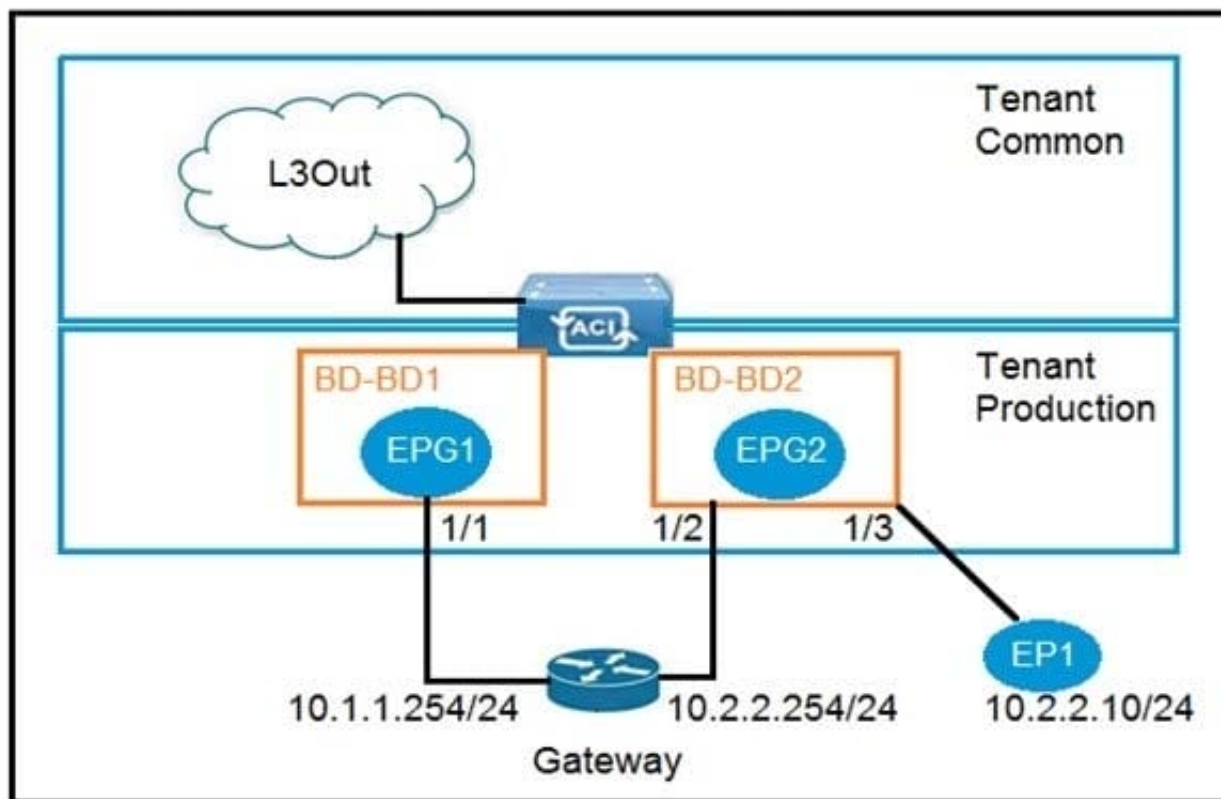
Following Questions and Answers are all new published by Cisco  
Official Exam Center

- ⚙ **Instant Download** After Purchase
- ⚙ **100% Money Back** Guarantee
- ⚙ **365 Days** Free Update
- ⚙ **800,000+** Satisfied Customers





## QUESTION 1



Refer to the exhibit. An engineer wants to avoid connectivity problems for the endpoint EP1 when it reaches an external L3Out network through the gateway 10.2.2.254/24. Which two configurations must be implemented in BD-BD2? (Choose two.)

- A. Disable unicast routing
- B. Enable IP data plane learning for the VRF
- C. Disable ARP flooding
- D. Enable ARP flooding
- E. Enable unicast routing

Correct Answer: AC

## QUESTION 2

In a Cisco ACI Multi-Site fabric, the Inter-Site BUM Traffic Allow option is enabled in a specific stretched bridge domain. What is used to forward BUM traffic to all endpoints in the same broadcast domain?

- A. ingress replication on the spines in the source site
- B. egress replication on the source leaf switches



- C. egress replication on the destination leaf switches
- D. ingress replication on the spines in the destination site

Correct Answer: D

Reference: <http://yves-louis.com/DCI/?p=1277>

---

### QUESTION 3

Which two components must be configured as stretched to establish intra-VRF communication between two EPGs that are deployed in different sites and different bridge domains? (Choose two.)

- A. contract
- B. tenant
- C. application profile
- D. bridge domain
- E. EPG

Correct Answer: DE

Reference: <https://www.cisco.com/c/en/us/solutions/collateral/data-center-virtualization/application-centric-infrastructure/white-paper-c11-739609.html>

---

### QUESTION 4

An existing Cisco ACI Multi-Site setup with default fabric settings contains endpoints that communicate with an MTU of 1500. What is the minimum MTU value that must be supported by the ISN to allow control plane endpoint information exchange between sites?

- A. 9000
- B. 1554
- C. 9100
- D. 1600

Correct Answer: C

Reference: <https://www.cisco.com/c/en/us/support/docs/cloud-systems-management/application-policy-infrastructure-controller-apic/214270-configure-aci-multi-site-deployment.html>

---

### QUESTION 5

DRAG DROP



A leaf receives unicast traffic that is destined to an unknown source, and spine proxy is enabled in the corresponding bridge domain. Drag and drop the Cisco ACI forwarding operations from the left into the order the operation occurs on the right.

Select and Place:

### Answer Area

Spine lookup occurs dMACi or dIPi

Packet is sent out of the fabric

Packet is routed in VRF overlay-1 based on dIPo

Source leaf forwards the packet to anycast TEP encapsulated with VXLAN header

Packet reaches destination leaf and is VXLAN decapsulated

Step 1

Step 2

Step 3

Step 4

Step 5

Correct Answer:



## Answer Area


Source leaf forwards the packet to anycast TEP encapsulated with VXLAN header

Spine lookup occurs dMACi or dIPi

Packet is sent out of the fabric

Packet reaches destination leaf and is VXLAN decapsulated

Packet is routed in VRF overlay-1 based on dIPo

[Latest 600-660 Dumps](#)

[600-660 PDF Dumps](#)

[600-660 Braindumps](#)