



# 600-660<sup>Q&As</sup>

Implementing Cisco Application Centric Infrastructure - Advanced

## Pass Cisco 600-660 Exam with 100% Guarantee

Free Download Real Questions & Answers **PDF** and **VCE** file from:

<https://www.passapply.com/600-660.html>

100% Passing Guarantee  
100% Money Back Assurance

Following Questions and Answers are all new published by Cisco  
Official Exam Center

-  **Instant Download** After Purchase
-  **100% Money Back** Guarantee
-  **365 Days** Free Update
-  **800,000+** Satisfied Customers





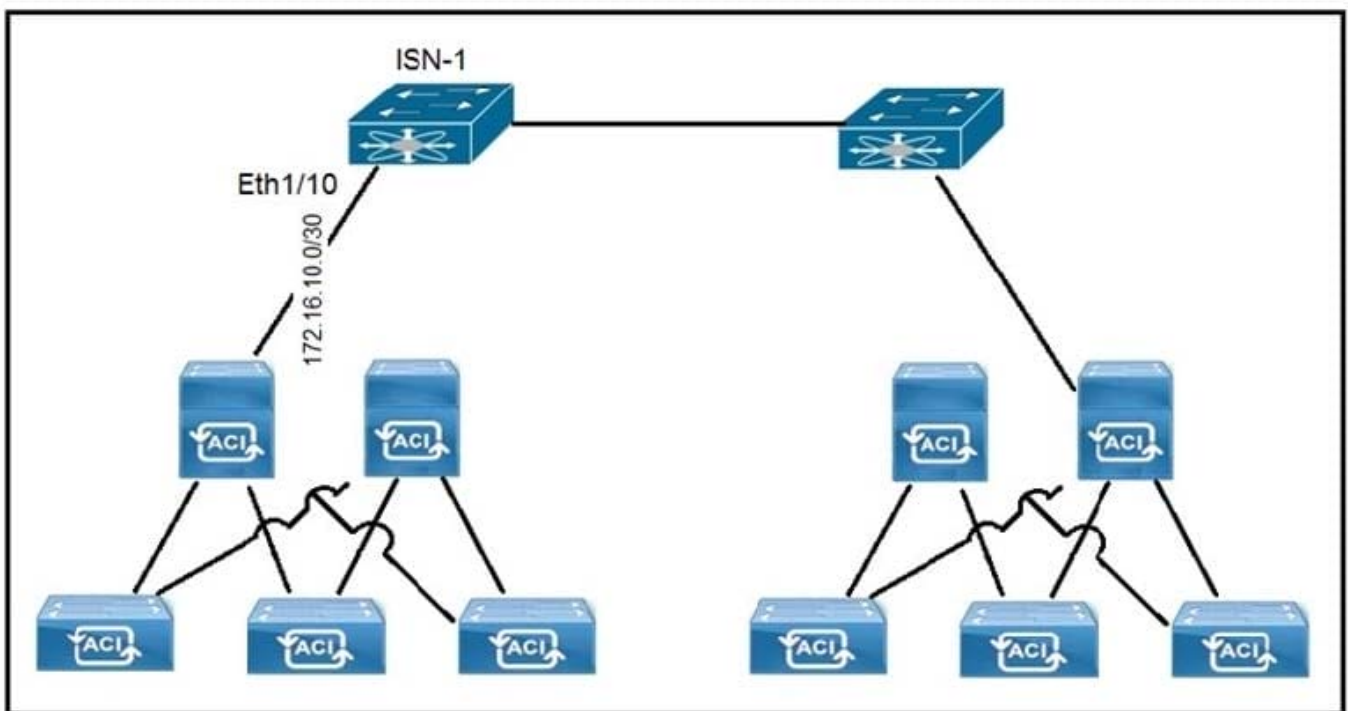
### QUESTION 1

How is broadcast forwarded in Cisco ACI Multi-Pod after ARP flooding is enabled?

- A. For the specific bridge domain, all spines forward the broadcast frames to IPN routers
- B. Broadcast frames are forwarded inside the pod and across the IPN using the multicast address that is associated to the bridge domain
- C. Within a pod, the ingress leaf switch floods the broadcast frame on all fabric ports
- D. Ingress replication is used on the spines to forward broadcast frames in the IPN infrastructure

Correct Answer: A

### QUESTION 2



Refer to the exhibit. A customer implements Cisco ACI Multi-Site with default MTU settings between two sites. Which configuration should be applied on the interface Eth1/10 on the ISN-1 device?

- A.
- B.
- C.
- D.

Correct Answer: A



### QUESTION 3

Bridge Domain - Web

Properties

L2 Unknown Unicast:  Flood  Hardware Proxy

L3 Unknown Multicast Flooding:  Flood  Optimized Flood

IPv6 L3 Unknown Multicast:  Flood  Optimized Flood

Multi Destination Flooding:  Flood in BD  Drop  Flood in Encapsulation

PIM:

IGMP Policy: select an option

ARP Flooding:

IP Data-plane Learning:  no  yes

Limit IP Learning To Subnet:

General L3 Configurations Advanced/Troubleshooting

Properties

Unicast Routing:

General L3 Configurations Advanced/Troubleshooting

Properties

Unknown Unicast Traffic Class ID: 49154  
Segment: 16711542  
Multicast Address: 225.0.37.192

Refer to the exhibit. How is the ARP request from VM1 forwarded when VM2 is not learned in the Cisco ACI fabric?

- A. Leaf 101 forwards the ARP request to one of the proxy VTEP spines.
- B. POD1 spine responds to the ARP request after the POD1 COOP is updated with the VM2 location.
- C. Leaf 101 encapsulates the ARP request into a multicast packet that is destined to 225.0.37.192.
- D. Leaf 101 switch consumes the ARP reply of VM2 to update the local endpoint table.

Correct Answer: A

### QUESTION 4

Where are STP BPDUs flooded in Cisco ACI fabric?

- A. in the bridge domain VLAN
- B. in the native VLAN ID
- C. in the access encapsulation VLAN part of different VLAN pools
- D. in the VNID that is assigned to the FD VLAN

Correct Answer: A



Reference: <https://www.cisco.com/c/en/us/solutions/collateral/data-center-virtualization/application-centric-infrastructure/white-paper-c11-737909.html>

---

#### QUESTION 5

What is a use of the Overlay Multicast TEP in Cisco ACI Multi-Site communication?

- A. to perform headend replication
- B. to act as the source IP for BUM traffic
- C. to establish MP-BGP adjacencies with remote spines
- D. to send and receive unicast VXLAN data plane traffic

Correct Answer: B

Reference: <https://www.cisco.com/c/en/us/solutions/collateral/data-center-virtualization/application-centric-infrastructure/white-paper-c11-739609.html#CiscoACIMultiSiteoverlaydataplane>

[600-660 VCE Dumps](#)

[600-660 Practice Test](#)

[600-660 Braindumps](#)