



# 5V0-42.21<sup>Q&As</sup>

VMware SD-WAN Design and Deploy Skills

**Pass VMware 5V0-42.21 Exam with 100% Guarantee**

Free Download Real Questions & Answers **PDF** and **VCE** file from:

<https://www.passapply.com/5v0-42-21.html>

100% Passing Guarantee  
100% Money Back Assurance

Following Questions and Answers are all new published by VMware  
Official Exam Center

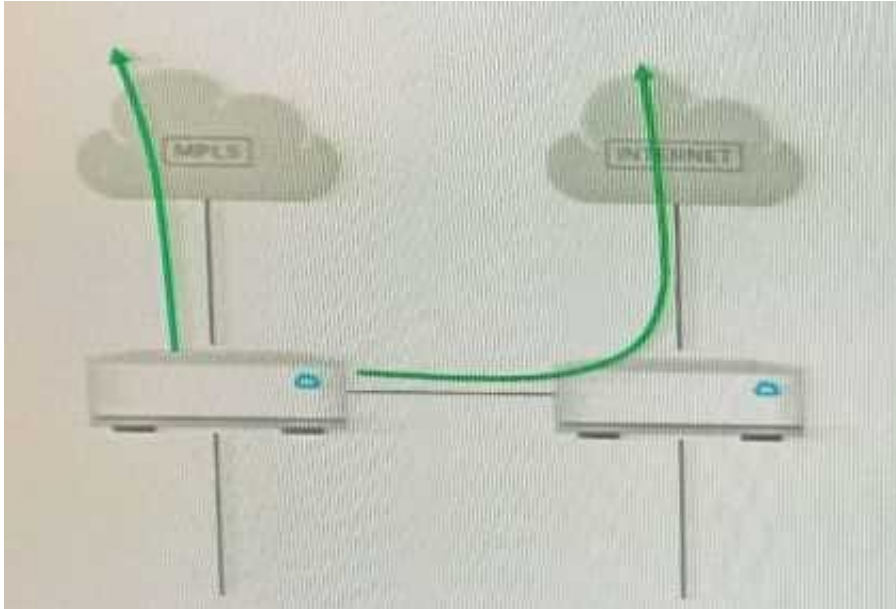
-  **Instant Download** After Purchase
-  **100% Money Back** Guarantee
-  **365 Days** Free Update
-  **800,000+** Satisfied Customers





### QUESTION 1

Refer to the exhibit.



Which VMware SD-WAN Edge High Availability deployment is being used?"

- A. Enhanced HA
- B. Fault Domain HA
- C. VRRP HA
- D. Standard HA

Correct Answer: C

### QUESTION 2

A technician at a customer site is deploying VMware SD-WAN Edge 620 notices that the Edge LED is shown amber.

What is the meaning of this LED color?

- A. Edge is still booting.
- B. DNS is not reachable from the Edge.
- C. Edge is not activated.
- D. Internet is not available from the Edge

Correct Answer: D



### QUESTION 3

An administrator is looking for a cost effective model of hardware-based Edge for some branch offices. The device must be mounted in rack cabinet, and to meet performance requirements and projected growth, the appliance must support up to 2 Gpbs bandwidth.

Which Edge model satisfies these requirements?

- A. Edge 3400
- B. Edge 540
- C. Edge 510
- D. Edge 620

Correct Answer: B

---

### QUESTION 4

Company a has recently acquired Company B, which has two remote office. Company A is using VMware hosted Cloud Gateways, and Company B is using a VMware SD-WAN with a Hub-Spoke topology. Which VEware Cloud VPN solution an administrator configure to establish connectivity between the offices of Company A and Company B?

- A. Site-to-Site VPN
- B. Branch to CASH
- C. Branch to Branch VPN
- D. Branch to Non VMware SU-WAN Site

Correct Answer: B

---

### QUESTION 5

An Enterprise customer just acquired a new company, and the Network Enterprise administrator was tasked to integrate over 20 new branches into their existing SD-WAN network. However, these branches have overlapping IPs with the existing branches subnets.

- A. Configure a NAT hand off rule at the VMware SD WAN gateway assigned to these new blanches, translating the new branch subnets into a new nan-overlapping subnet
- B. Configure a LAN-side NAT rule at the branch device settings, translating its subnets into a new non-overlapping subnet
- C. Configure a NAT firewall rule in each branch, translating its subnets into a new non-overlapping subnet
- D. Configure a policy based NAT for each branch translating its subnets Into a new non-overlapping subnet



Correct Answer: B

[Latest 5V0-42.21 Dumps](#)

[5V0-42.21 PDF Dumps](#)

[5V0-42.21 VCE Dumps](#)