



5V0-41.20^{Q&As}

VMware SD-WAN Troubleshoot

Pass VMware 5V0-41.20 Exam with 100% Guarantee

Free Download Real Questions & Answers **PDF** and **VCE** file from:

<https://www.passapply.com/5v0-41-20.html>

100% Passing Guarantee
100% Money Back Assurance

Following Questions and Answers are all new published by VMware
Official Exam Center

-  **Instant Download** After Purchase
-  **100% Money Back** Guarantee
-  **365 Days** Free Update
-  **800,000+** Satisfied Customers



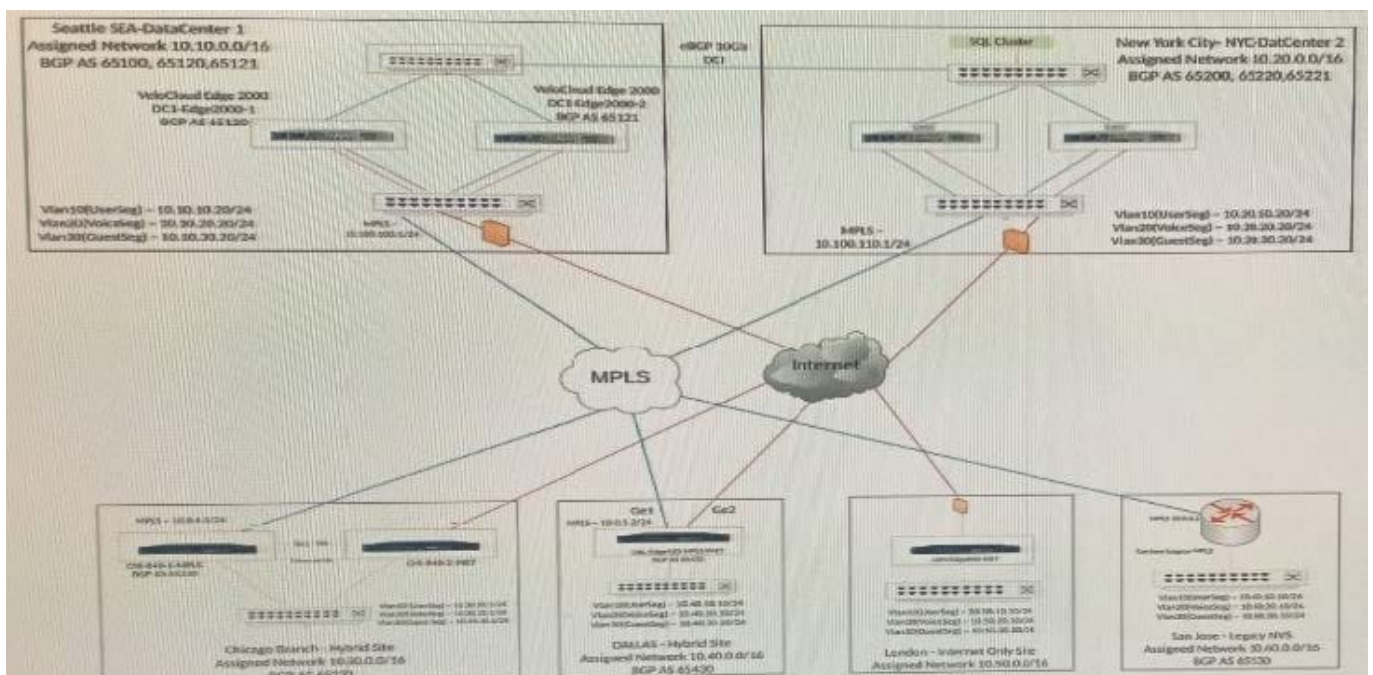


QUESTION 1

Scenario 2:

After completing the branch activation activities for all required branches, the network administrator attempts to test connectivity between the various branches and between the hubs and branches. The administrator notices a lack of connectivity despite being certain that configurations have been complete. The administrator also observed that several users are reporting intermittent connectivity to some of the applications they are accessing. Other users are reporting no access to these applications. Other users at some of the branches claim they cannot get to certain public resources. The administrator wants to ensure that all sites can talk to each other and all resources are accessible.

Exhibit.



Where can the network administrator check to see what routes are present on the London- site Edge?

- A. Log into the VCO > Configuration > Overlay Flow Control
- B. Log into the VCO > Test and Troubleshoot > Remote Diagnostics > Run "List Paths"
- C. Log into the VCO > Test and Troubleshoot > Remote Diagnostics > Run "Route Table Dump"
- D. Log into the VCO > Monitoring > Overlay Flow Control

Correct Answer: C

QUESTION 2

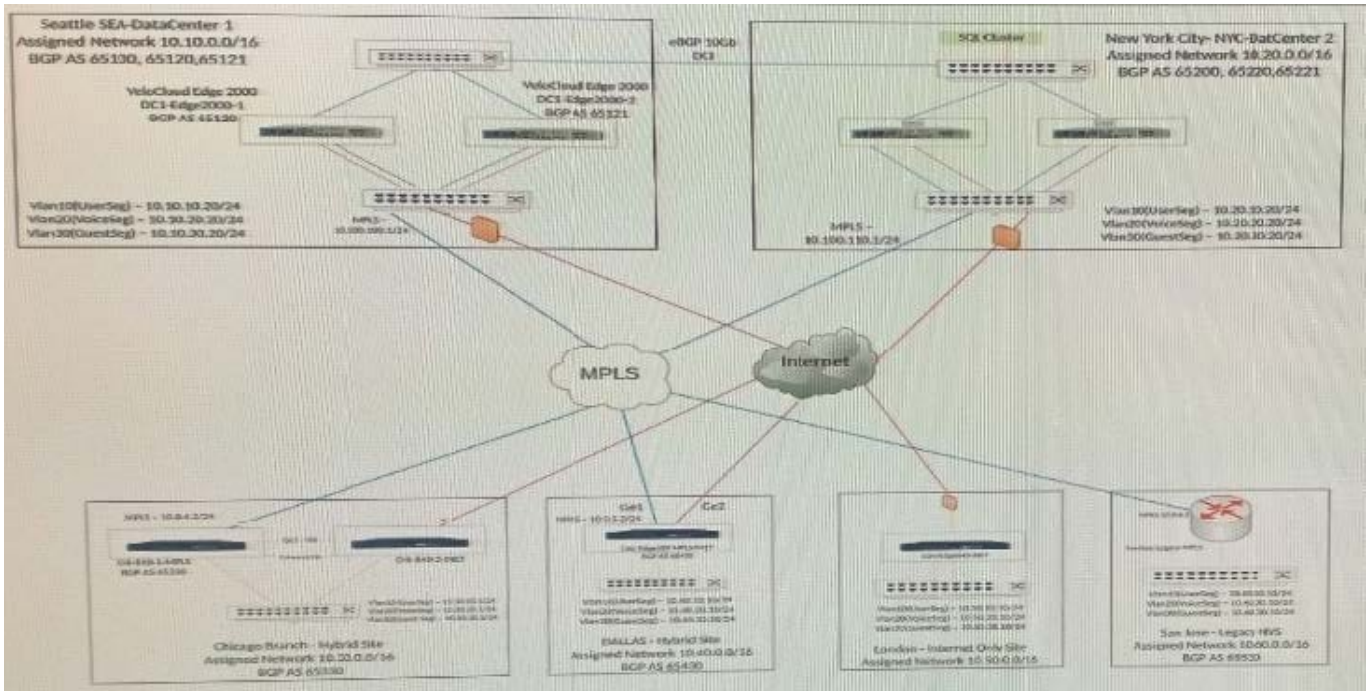
Scenario 2:

After completing the branch activation for all required branches, the network administrator attempts to test connectivity between the various branches and between hubs and branches. The administrator notices a lack of connectivity despite



being certain that configurations have been complete. The administrator also observed that several users are reporting intermittent connectivity to some of the some applications they are accessing. Other users are reporting no access to these applications. Other users at some of the branches claim they cannot get to certain public resources. The administrator wants to ensure that all sites can talk to each other and all resources are accessible.

Exhibit.



A technician has added Edges to an East Coast Profile. These Edges are not able to communicate via dynamic tunnels to Edges in the West_Coast profile. The technician has noticed that some Edges are able to establish dynamic tunnels.

What could be preventing Edges from being able to establish dynamic tunnels?

- A. The profiles are not configured to allow dynamic branch to branch VPNs.
- B. The profiles are configured to only allow dynamic branch to branch for Edges within the same profile.
- C. None of the existing profiles have Cloud VPN enabled thus preventing dynamic tunnels.
- D. Neither profile has been configured to utilize cloud gateways.

Correct Answer: B

QUESTION 3

Scenario 3: After resolving numerous connectivity issues throughout the various branch sites, connectivity between applications and users is finally present. The network administrator is informed that during certain tests, applications are not performing as they are expected to. Users report that call quality has not fully improved and that some of their calls either drop or have poor voice quality where the conversation is breaking up. Other users are noticing that file transfers are slower than expect. A group of users from a few sites have reported slowness in accessing internal and external applications.

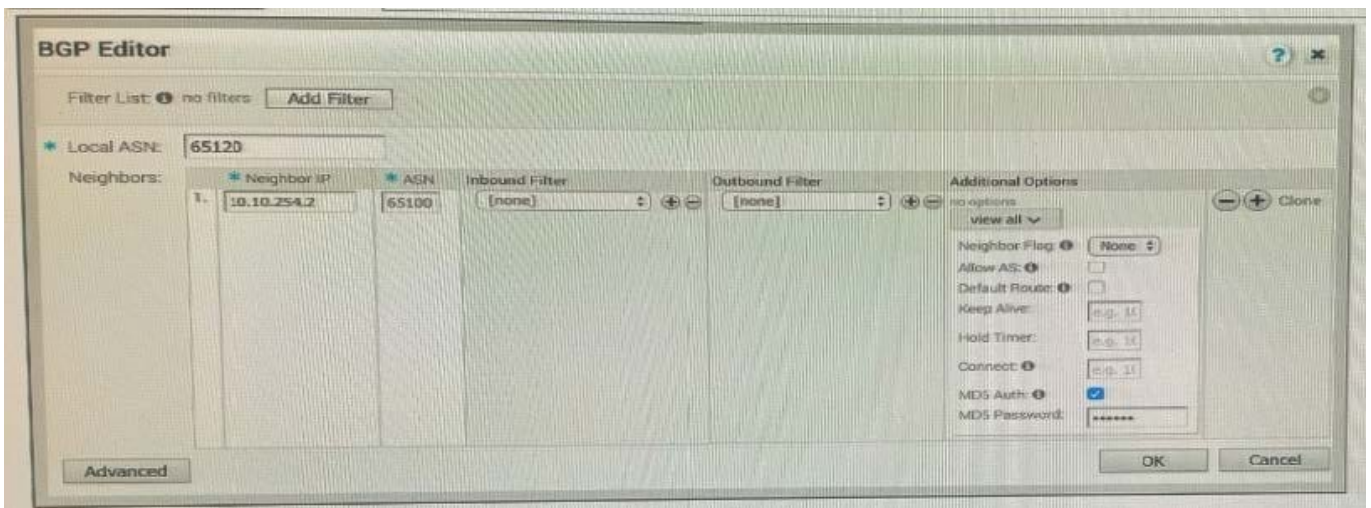
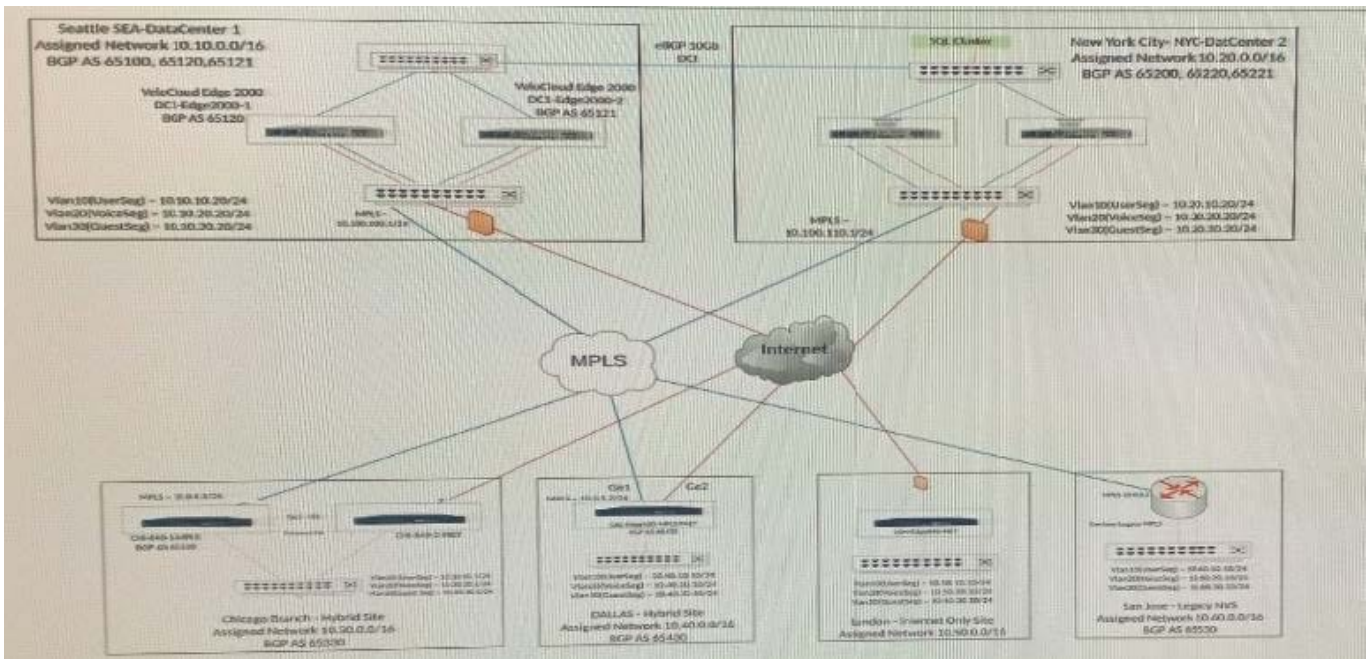


Users at multiple branches complain that a highly performant SQL Database cluster residing at the New York Data Center is not responding to database queries or inserts as expected. It is affecting the order management site. A network administrator investigates and finds that traffic from the branches are going through Seattle to reach the SQL Cluster in New York. The design for this SD-WAN network does not call for routing security.

The SQL Cluster is reachable through either Data Center, but for performance reasons, must flow through the New York DC. The network administrator has verified that the routes are not present in the OFC and the BGP neighborship is down in Network Services.

Refer to the Exhibit(s).

Exhibit.



What should the administrator verify?

- A. The BGP configuration has a filter in place to deny the prefix in New York.
- B. The BGP Authentication matches on both sides.



- C. The BGP configuration has a filter in place to deny the prefix in Seattle.
- D. Backhauling through the Seattle DC is disabled.

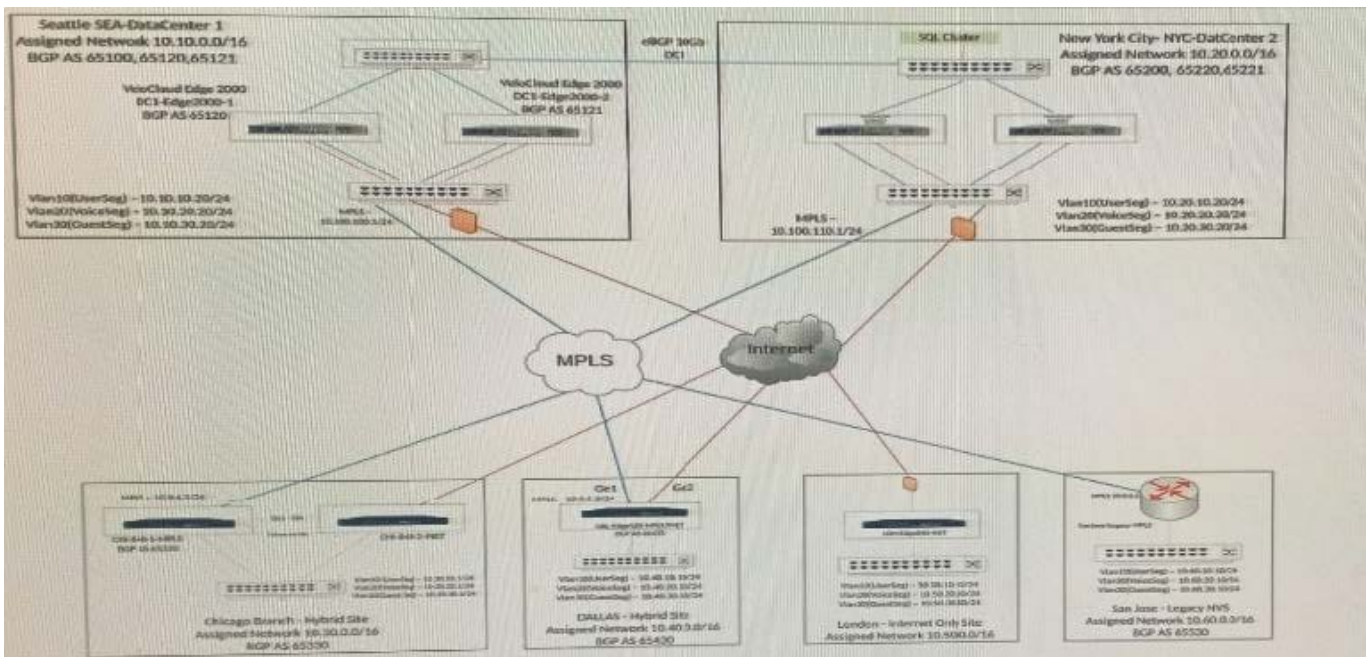
Correct Answer: D

QUESTION 4

Scenario 1:

A network administrator is tasked with enabling SD-WAN at three branch locations. A topology has been provided for reference. For each site, the administrator is having issues bringing edges online, as another administrator has gone ahead and created a configuration ahead of lime. The organization has several branch sites. One is an Internet- only site and two are Hybrid locations with both internet and MPLS. The last location is MPLS only. There are hub data center locations in this environment as well. Please refer to the topology.

Exhibit.



When attempting to activate an Edge, after clicking on the "activation link" in the email that was sent to the network administrator, the Edge's local UI shows as "Internet down". This is preventing the Edge from coming online and being activated. When referring to the output, the network administrator notices that the Edge has received DHCP addressing.

What could be preventing the Edge from coming online?

- A. The next hop does not respond to ICMP pings.
- B. Cloud VPN is not enabled in the AMER Branch profile.
- C. The subnet mask assigned to the Edge is incorrect.



D. The Edge\\'s profile does not specify the correct Edge Model.

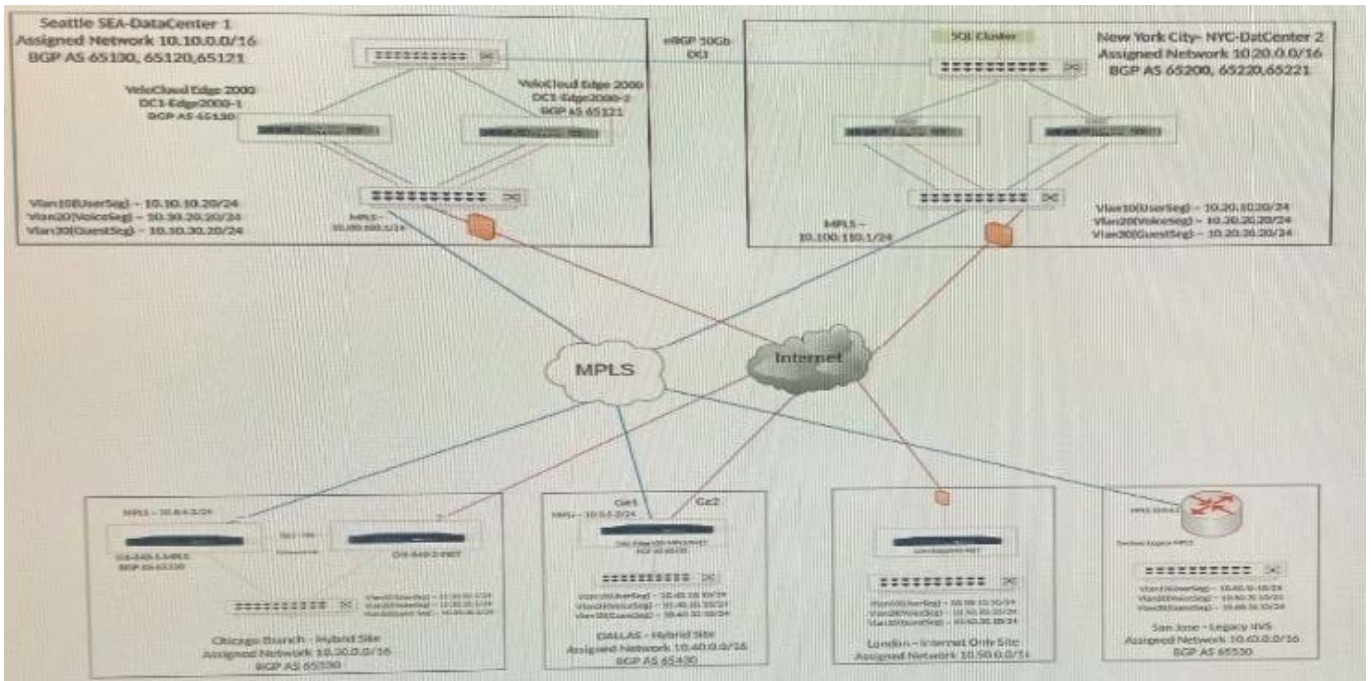
Correct Answer: A

QUESTION 5

Scenario 3:

After resolving numerous connectivity Issues throughout the various branch sites, connectivity between applications and users is finally present. The network administrator is informed that during certain tests, applications are not performing as they are expected to. Users report that call quality has not fully improved and that some of their calls either drop or have poor voice quality where the conversation is breaking up. Other users are noticing that file transfers are slower than expect. A group of users from a few sites have reported slowness in accessing internal and external applications.

Exhibit.



Users at a remote office are complaining about poor performance with certain applications. The network administrator has already verified the configuration is correct.

Which two parameters should the administrator review to troubleshoot this issue? (Choose two.)

- A. Check the underlay network (bandwidth, latency, jitter, packet loss)
- B. Change the bandwidth measurement under WAN Overlay Advanced Settings
- C. Check the flows to verify which Business Policy the traffic of interest is matching
- D. Look under Monitor, check Business priority tab

Correct Answer: AD



[5V0-41.20 PDF Dumps](#)

[5V0-41.20 VCE Dumps](#)

[5V0-41.20 Braindumps](#)