



4A0-C01^{Q&As}

Nokia NRS II Composite Exam

Pass Nokia 4A0-C01 Exam with 100% Guarantee

Free Download Real Questions & Answers **PDF** and **VCE** file from:

<https://www.passapply.com/4a0-c01.html>

100% Passing Guarantee
100% Money Back Assurance

Following Questions and Answers are all new published by Nokia
Official Exam Center

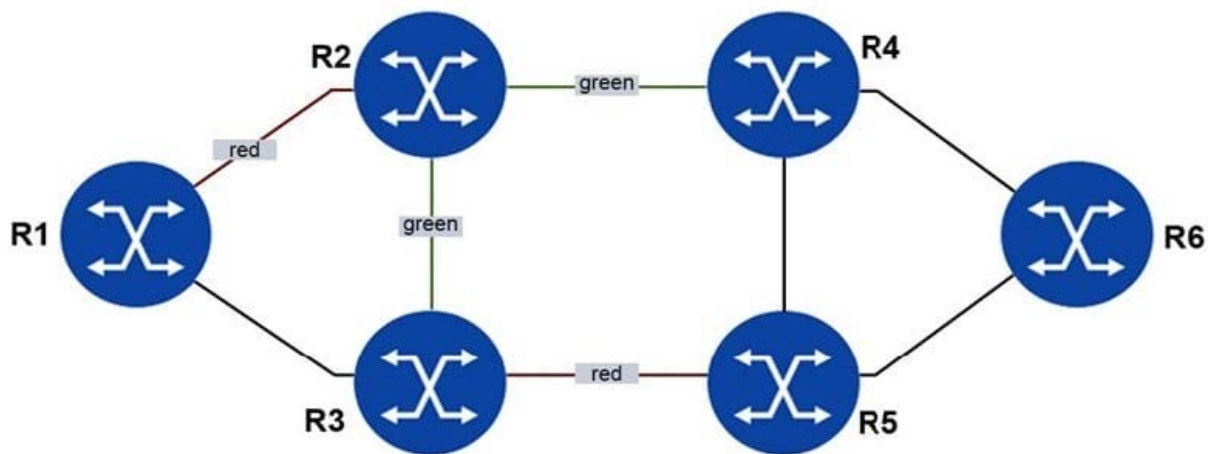
- ⚙ **Instant Download** After Purchase
- ⚙ **100% Money Back** Guarantee
- ⚙ **365 Days** Free Update
- ⚙ **800,000+** Satisfied Customers



**QUESTION 1**

All links are of equal cost. A CSPF enabled LSP is configured on routers R1 to R6. Its fully loose primary path is configured with an "exclude green" statement and the fully loose secondary path is configured with an "exclude red" statement.

Which paths will be taken by this LSP?

**Legend**

- "red" admin group
- "green" admin group

- A. The primary path will take R1-R3-R2-R4-R6. The secondary path will take R1-R3-R5-R6.
- B. The primary path will take R1-R3-R5-R4-R6. The secondary path will take R1-R3-R2-R4-R5-R6.
- C. The primary path will take R1-R3-R5-R6. The secondary path will take R1-R3-R2-R4-R5-R6.
- D. The primary path will take R1-R3-R5-R6. The secondary path will take R1-R3-R2-R4-R6.

Correct Answer: D

QUESTION 2

Which of the following about IS-IS Traffic Engineering on a Nokia 7750 SR is FALSE?

- A. Traffic engineering information is carried in the extended TLVs.
- B. Traffic engineering must be enabled on all IP/MPLS routers along the LSP path.



- C. Traffic engineering information is stored in the opaque database.
D. Traffic engineering is required for constraint-based LSPs.

Correct Answer: C

QUESTION 3

Click the exhibit.

```
R1# show router 100 fib 1
```

Prefix	NextHop	Protocol
10.1.5.0/24	10.1.5.0 (R1-R5)	
10.6.4.0/24	10.10.10.4 (VPRN Label:131065 Transport:LDP)	
10.10.10.5/32	10.1.5.5 Indirect (R1-R5)	
10.10.10.6/32	10.10.10.4 (VPRN Label:131065 Transport:LDP)	
192.168.10.0/24	10.1.5.5 Indirect (R1-R5)	?
192.168.20.0/24	10.10.10.4 (VPRN Label:131065 Transport:LDP)	

Total Entries : 6

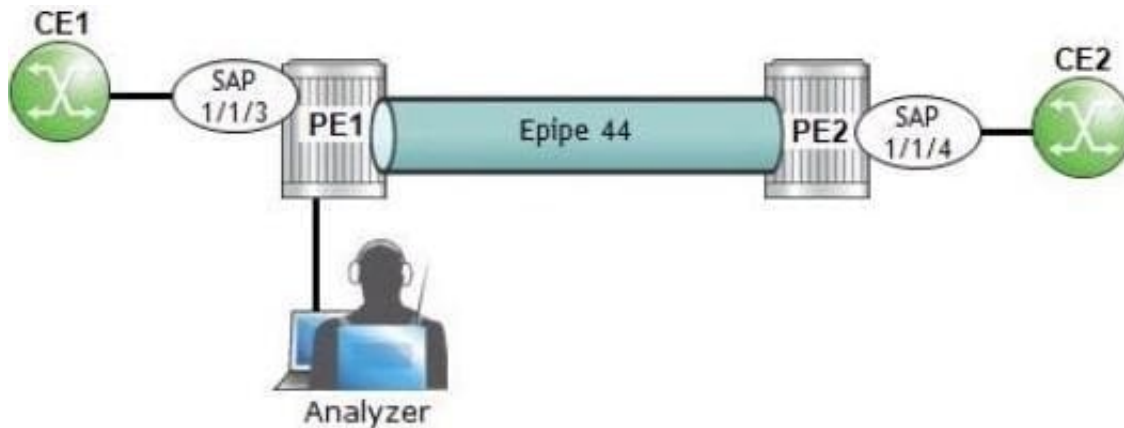
Based on the output from PE router R1 about VPRN 100, by which protocol was 192.168.10.0/24 learned?

- A. BGP
B. MP-BGP
C. LDP
D. MPLS

Correct Answer: A

QUESTION 4

Click the exhibit.



An operator at PE1 wants to analyze the traffic between CE1 and PE1 on SAP 1/1/3, On an Alcatel-Lucent 7750 SR, which of the following is NOT required as part of the configuration?

- A. A mirror source with a defined source type.
- B. A mirror source defined with an SDP destination.
- C. A mirror destination with a SAP defined.
- D. A mirror destination and a mirror source with the same service ID.

Correct Answer: B

QUESTION 5

In a Layer 2 encapsulation, using Martini, what does the second (bottom) label represent?

- A. Tunnel Label
- B. VC Label
- C. Operational Control Word
- D. VPI
- E. VCI

Correct Answer: B

[4A0-C01 PDF Dumps](#)

[4A0-C01 Exam Questions](#)

[4A0-C01 Braindumps](#)