



4A0-106^{Q&As}

Alcatel-Lucent Virtual Private Routed Networks

Pass Alcatel-Lucent 4A0-106 Exam with 100% Guarantee

Free Download Real Questions & Answers **PDF** and **VCE** file from:

<https://www.passapply.com/4a0-106.html>

100% Passing Guarantee
100% Money Back Assurance

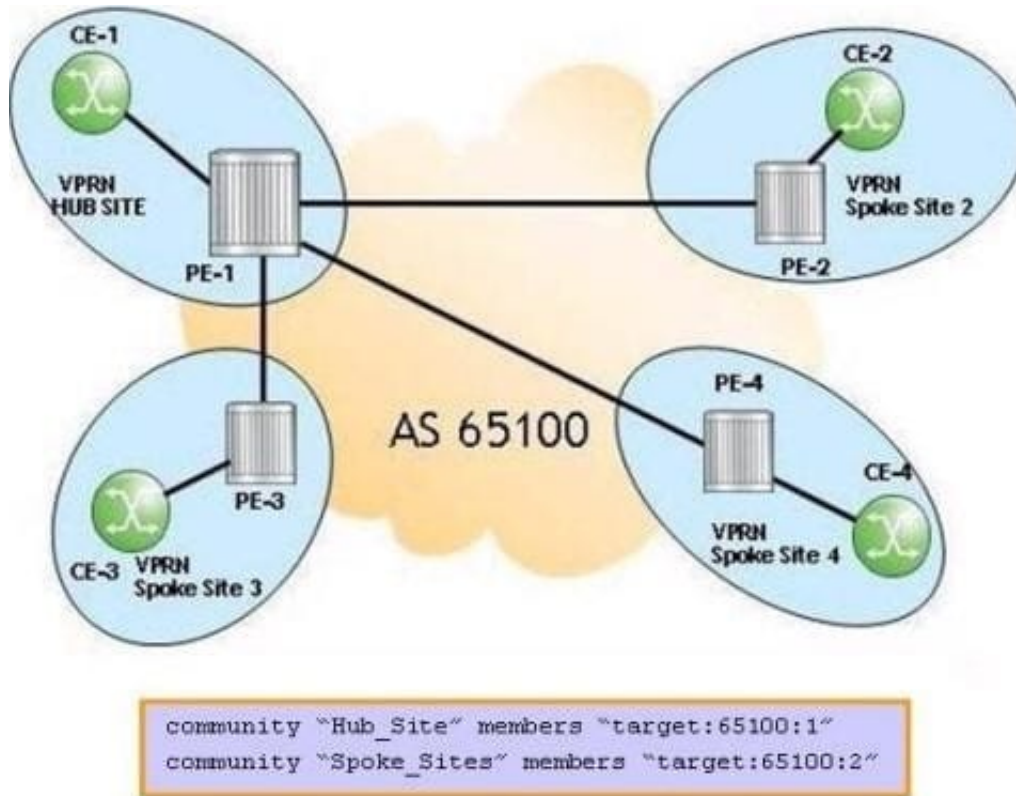
Following Questions and Answers are all new published by Alcatel-Lucent Official Exam Center

- ⚙️ **Instant Download** After Purchase
- ⚙️ **100% Money Back** Guarantee
- ⚙️ **365 Days** Free Update
- ⚙️ **800,000+** Satisfied Customers



**QUESTION 1**

Click the exhibit.



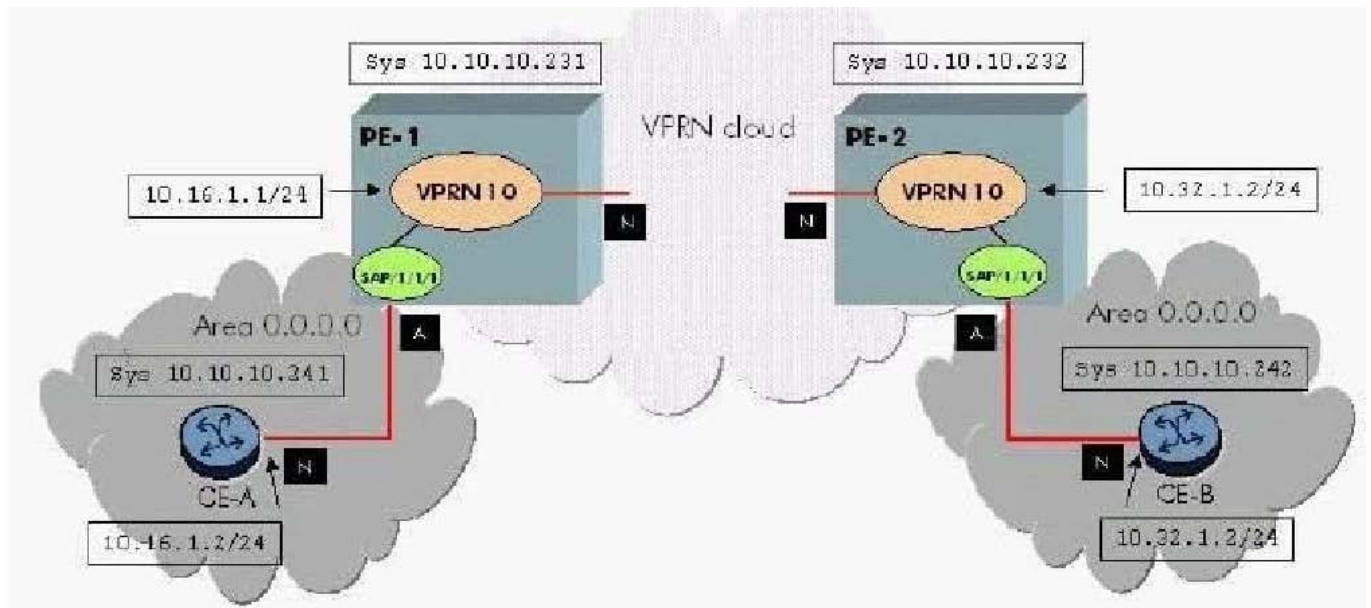
For the PE hub and spoke VPRN, on which PE(s) should the VPRN service command "vrf-target export target:65100:1 import target:65100:2" be configured?

- A. PE1
- B. PE2, PE3 and PE4
- C. PE1, PE2, PE3 and PE4
- D. This command is not required for the configuration of this PE hub and spoke VPRN.

Correct Answer: A

QUESTION 2

It is required to prepare the provider core for LDP on an Alcatel-Lucent 7750 SR. Based on the configuration shown below, choose the answer that best describes the given configuration.



- A. This configuration is correct and complete
- B. This configuration is correct except that the system interface must be added
- C. This configuration is correct except that the interfaces facing the CE routers must be added.
- D. MPLS configuration is not required

Correct Answer: D

QUESTION 3

Which of the following statements are true regarding P devices in an MPLS VPRN? (Choose two.)

- A. Participate in service provider core routing
- B. P devices are not required to be MPLS enabled. MPLS is only required on the PE devices
- C. Run a common routing protocol with the CE router
- D. Must support MP-BGP
- E. Do not have any connections to the CE
- F. Must be aware of the VPRNs

Correct Answer: AE

QUESTION 4

Which of the following about inter-AS model AVPRN is TRUE?

- A. It is the most scalable of the Inter-AS models.



- B. VRF configuration is not required on the ASBRs.
- C. Most routers that support VPRN functionality do not support model A by default.
- D. It is not necessary to run MPLS at the boundary between autonomous systems.

Correct Answer: D

QUESTION 5

Which of the following VPRN label allocation methods are supported by the Alcatel-Lucent 7750 SR?

- A. One label per VRF per route
- B. One label per VRF per next-hop
- C. One label per VRF
- D. All of the above
- E. A and C
- F. B and C

Correct Answer: F

[4A0-106 PDF Dumps](#)

[4A0-106 Study Guide](#)

[4A0-106 Exam Questions](#)